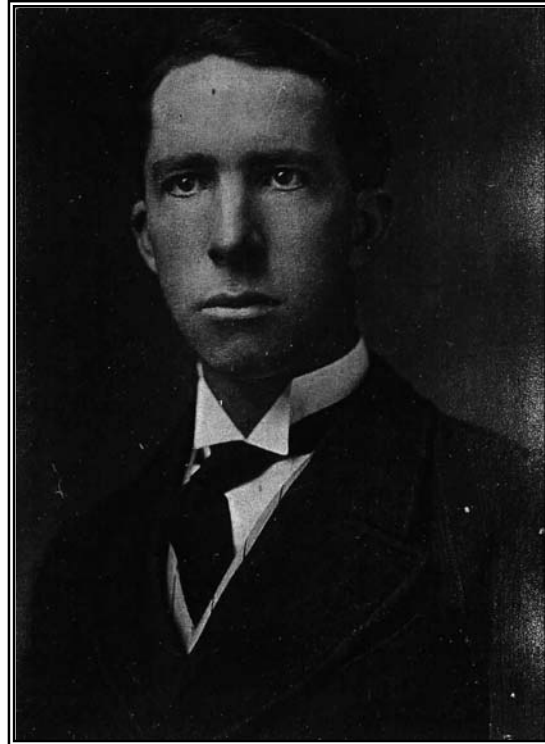


Chapter 8 The John William Humphrey Family

John William Humphrey, the son of John Humphrey, was born on June 7, 1884 in Clarks, NC and died on April 20, 1942 in Beaufort, NC.¹ A teacher who lived in their home educated John, along with his older brother Jay Lee, and sister, Clara Julia. They also attended Reedy Branch School.² John W. Humphrey also attended North Carolina A & M College, now North Carolina State University.³

In the 1900 Craven census, John Humphrey is listed in the household of John and Julia Humphrey in Clarks, NC.⁴

Figure 40 Photo of John William Humphrey



John appears in the 1910 Craven census, along with his parents, John and Julia Humphrey, and siblings, Jay Lee and Clara Julia Humphrey. His occupation was listed as sawer (lumber mill).⁵ This was likely the Clarks Milling Company, operated by Amos T. and Abner Wetherington.

John W. Humphrey married Eva Lane Pittman on December 22, 1910 in Craven County. Eva Lane Pittman was the daughter of Charles M. Pittman and Annie Gooding. Eva Lane Pittman was born on April 14, 1886 in Craven County and died on June 15, 1973. The marriage license lists witnesses Hal J. Foscue and Clara H. Foscue.⁶



Figure 41 Clarks Milling Company, 1913

John and Eva Humphrey made their home in Clarks from until about 1927. They lived in at least three homes in the Clarks area. One location was a two-story home along the railroad near the Clark Brick & Tile Company office. This home was demolished in the early 1960s. The family also lived on a farm adjoining the farm of his father, John Humphrey, on Deep Branch.



Figure 42 *Former John W. Humphrey Residence*

This one-story farmhouse was demolished about 1970. The third known home was a two-story home at the end of Wetherington Road in Clarks. Abner and Lorena Wetherington later purchased this home. The home was abandoned in the 1980s after Lorena's death. Now part of an industrial park, the overgrown home and several farm outbuildings still exist in 2002.⁷

John and Eva Humphrey appear in the 1920 Craven census, living at Clarks, in the 8th Township. His occupation is listed as farmer. Also in the household are three children, John P., Harriet L., and Marjorie F. Humphrey.⁸

During the 1920s John Humphrey and family migrated to the Beaufort, NC area where John ran a dairy for a number of years. In 1941, John rented a home in Beaufort and moved the family to Front Street. John died on April 20, 1942 and is buried in the Oceanview Cemetery in Beaufort, NC.⁹ John's wife, Eva Lane Pittman, died on June 15, 1973 and is buried in the Oceanview Cemetery.¹⁰ John's son, John P. "Jack" Humphrey, resides in the home in Beaufort with his wife, Pat.



Figure 43 *Home of John W. Humphrey in Beaufort, NC*

Purchased by John W. Humphrey in 1941, the home is owned by John "Jack" Pittman Humphrey. John's sister, Marjorie Humphrey Linnemeier lives next door on the right.

John W. and Eva Humphrey lived in Windsor, NC about 1914 where he ran a furniture store. The family returned to Clarks by 1920 and about 1927 they moved to the Beaufort area. His first dairy was near Newport and later he located the Holly Grove Dairy to the northern edge of Beaufort NC. ^{11, 12}

Figure 44
Holly Grove Dairy Pint Seal



Figure 45
Holly Grove Dairy Bottle Cap

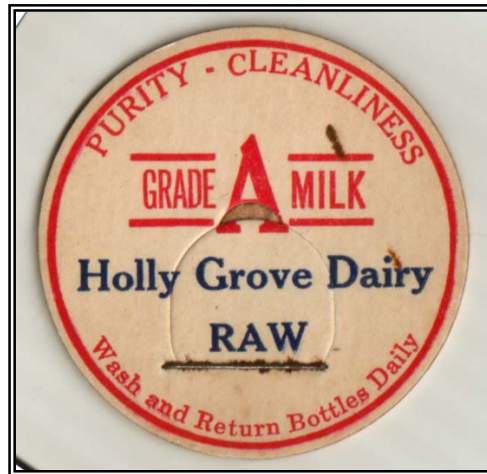


Figure 46 *Photo of Holly Grove Dairy, Beaufort, NC*

Figure 47 *Marjorie Faye, Hattie Lee, and John 'Jack' Pittman Humphrey*

(l-r, about 1920)



The children of John W. Humphrey and Eva Lane Pittman:

- A. **John Pittman Humphrey** (1912 –2002) was born in Clarks, NC and lives in Beaufort, NC. He married Ona ‘Pat’ Patterson.
- B. **Harriet Lee Humphrey** (1914 –) was born in Clarks, NC and married Llewellyn Phillips.
- C. **Marjorie Faye Humphrey** (1918 –) was born in Clarks, NC and lives in Beaufort, NC. She married George Linnemeier. George H. Linnemeier was born on August 2, 1917 and died on May 5, 1979. George Linnemeier is buried in the Oceanview Cemetery in Beaufort, NC.¹³
- D. **Robert Pittman Humphrey** was born on April 30, 1922 and died on April 19, 1977 in Beaufort, NC. Robert married Virginia Briley (1922-1999). Robert and Virginia are buried in the Oceanview Cemetery in Beaufort, NC.¹⁴

The grandchildren of John W. Humphrey and Eva Lane Pittman: 15

- A. John Pittman Humphrey and Ona ‘Pat’ Patterson
 - 1. No Children
- B. Harriet Lee Humphrey and Llewellyn Phillips
 - 1. Llewellyn Phillips
 - 2. John Humphrey Phillips
 - 3. Matti H. Phillips
- C. Marjorie Faye Humphrey and George Henry Linnemeier
 - 1. George H. Linnemeier
 - 2. Leigh Linnemeier
 - 3. Mark Linnemeier
- D. Robert Pittman Humphrey and Virginia Briley
 - 1. Elizabeth Ann Humphrey
 - 2. Barbara Jean Humphrey
 - 3. Virginia Eve Humphrey

The John W. Humphrey Family

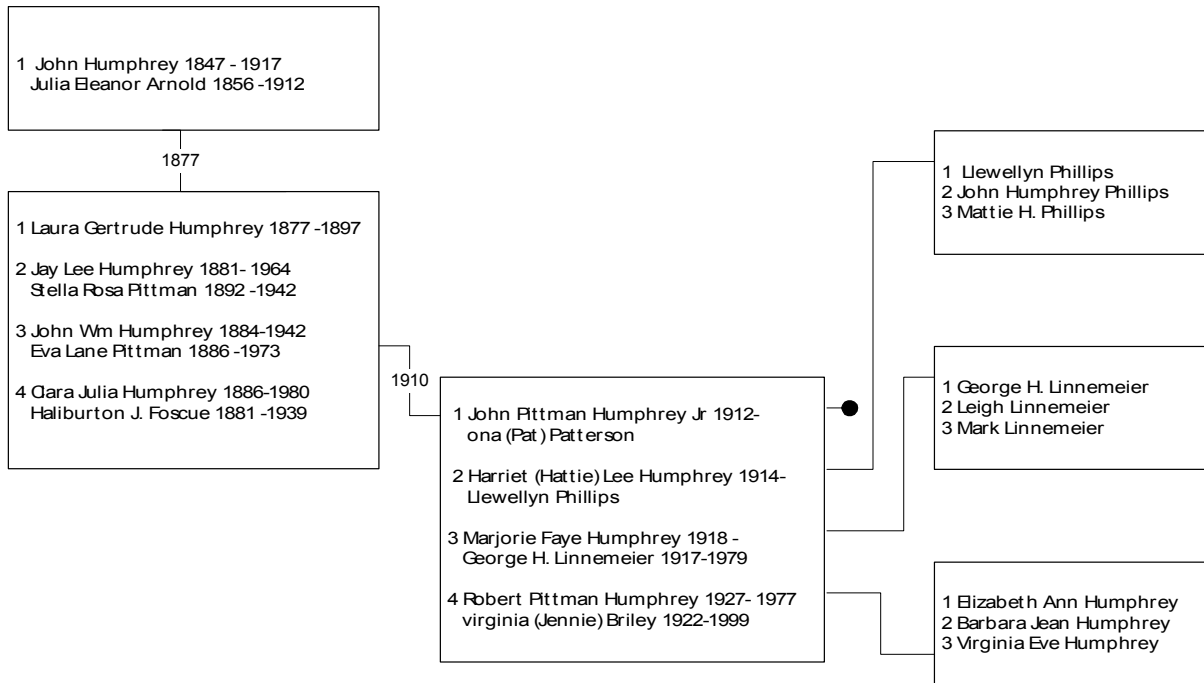


Figure 48 Overview of the John W. Humphrey Family

Endnotes Chapter 8 The John W. Humphrey Family

- ¹ Oceanview Cemetery Survey of Humphrey plot. A. Humphrey 2002.
 - ² Reedy Branch is a tributary on the south side of the Trent River. The Craven – Jones County boundary.
 - ³ Heritage of Craven County. Volume I. 1984. Article 269. Craven County Library.
 - ⁴ 1900 Craven County Census. 8th Township. Microfilm. Craven County Library.
 - ⁵ 1910 Craven County Census. 8th Township. Microfilm. Craven County Library.
 - ⁶ Craven County Marriage Register. Volumes 2-7. Microfilm. Craven County Library.
 - ⁷ Cemetery Site Survey. 2002. By the author.
 - ⁸ 1920 Craven County Census. 8th Township. Page 153B. Microfilm. Craven County Library.
 - ⁹ Oceanview Cemetery Survey of Humphrey plot. A. Humphrey 2002.
 - ¹⁰ Oceanview Cemetery Survey of Humphrey plot. A. Humphrey 2002.
 - ¹¹ Author's interview with Harold B. Humphrey, May 2002.
 - ¹² Milk Seal excavated at Clarks, NC by Charles P. Humphrey.
 - ¹³ Oceanview Cemetery Survey of Humphrey plot. A. Humphrey 2002.
 - ¹⁴ Oceanview Cemetery Survey of Humphrey plot. A. Humphrey 2002.
 - ¹⁵ Records compiled by Viirginia H. Humphrey June 2000.
-