

## Chapter 11 The Elijah Vail Pittman Family

**Joseph Pittman** lived in Accomac County, Virginia in 1678. His will was written in 1778 and was probated in 1783 according to Accomac County records<sup>1</sup>. His wife was Elizabeth Johnson Pittman, and her brothers were Obedience and Thomas Johnson. Joseph and Elizabeth Pittman had two children, Obedience and Mary.<sup>2</sup>

**Obedience Pittman**, son of Joseph, was born in Accomac Co, Virginia and moved to North Carolina, sometime before 1713. A deed from Thomas Lewis to Adam Furguson, Jr. mentions the property line of widow Pittman.<sup>3</sup> The widow Pittman had two children, Joseph and William.<sup>4</sup> A conveyance in 1716 from Thomas Lewis from 300 acres to Obedience Pittman was acknowledged at a Court held at the house of Captain William Hancock in October 1716 per Craven County records.<sup>5</sup>

**Joseph Pittman**, son of Obedience Pittman and wife (widow Pittman) was born about 1700 and married Elizabeth Furguson, daughter of Adam Furguson, Sr. and sister to Mark and Adam Furguson, Jr.<sup>6</sup> Joseph and Elizabeth had children Obedience, John, Joseph, Mark, Southy, and Thomas. These children are listed in Joseph's 1747 will in Craven County.<sup>7</sup>

**Joseph Pittman, Jr.**, son of Joseph and Elizabeth Pittman, was born about 1730.<sup>8</sup> A 1763 deed mentions Joseph selling land to John Pittman, from land given me by Father Joseph Pittman, deceased on the east side of Adam's Creek and a small creek called Bethsheba's Creek.<sup>9</sup> Another deed, dated 1785, identifies lands on the North Side of the Neuse River.<sup>10</sup> The lands were later sold by Elijah V. Pittman and Spencer Pittman, sons of Joseph.

Joseph Pittman married Eleanor Veale (aka as Mary Neale)<sup>11</sup>, daughter of John Veale.<sup>12</sup> His will of 1808 identifies his children as Elijah, Spencer, Susannah, William, and Joseph.<sup>13</sup>

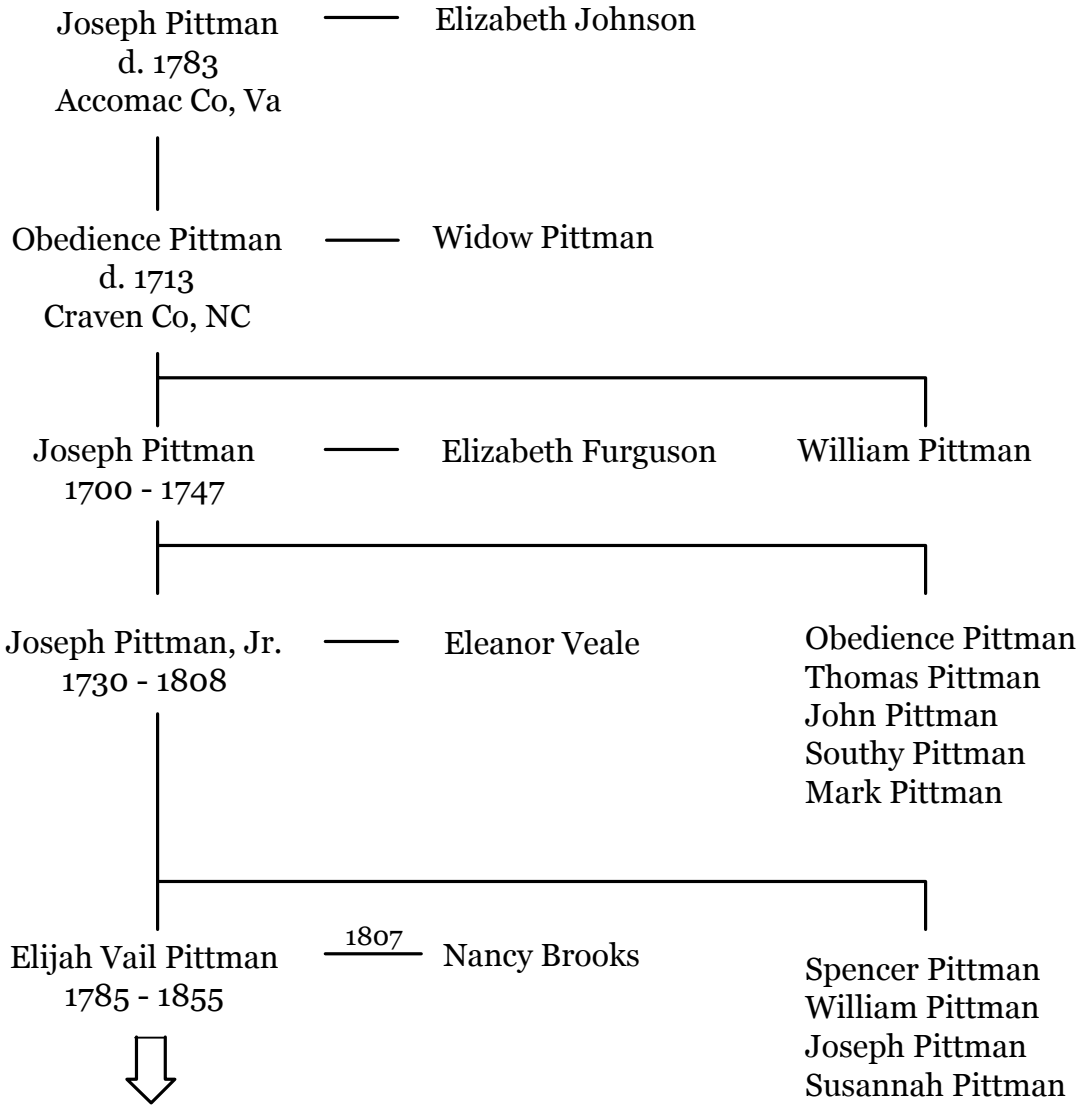
**Spencer Pittman** son of Joseph, married Patsy Delamar on March 20, 1805 in Craven County.

**William Pittman**, son of Joseph, married Sarah Riggs on June 17, 1807 in Craven County.

**Elijah Vail Pittman**, son of Joseph, born about 1785, married Nancy Brooks on September 5, 1807 in Craven County<sup>14</sup>. She was born in 1788, daughter of Joseph Brooks and Martha Willis. In 1824, Elijah Pittman is listed as a merchant in New Bern.<sup>15</sup> He occupied store tenements in a group of brick buildings opposite the bank of New Bern in 1824. He was also a Commissioner, Juryman, and Justice of the Peace.<sup>16</sup>

---

# Early Craven County Pittmans



**Figure 59 Early Craven Area Pittman Family Tree**

*Early Pittmans moved from Accomac Virginia to the lower Neuse River area of North Carolina, Elijah V. Pittman appears to migrated as an adult to New Bern and then to Lenoir County.*

The early Craven County Pittmans migrated from Accomac County, Virginia to the lower Neuse River area, part of Craven County in 1710. The early deeds locate property on both sides of the river, a plantation on the east side of Adams Creek, now part of Carteret County, and on Brown's Creek on the north side of the Neuse River, now the area of Whortonsville in Pamlico County.<sup>17</sup>

About 1800 there are also Pittmans living in the Turnagain Bay area on the south side of the Neuse, on Pittman's Creek. Although some of the Pittman family continued to live in Carteret County, Elijah Vail Pittman migrated to New Bern and later to Kinston, NC area.<sup>18</sup>

The old Pittman settlement on Pittman's Creek and Turnagain Bay was deserted by 1900 in favor of land accessible by roads. An old cemetery on Pittman's Creek still remains with the following markers per Dollie Carraway's book, *A History of South River*.<sup>19</sup>

The following is reportedly the persons buried on Pittman Creek. The existence of any old markers of wood and ballast stone is not known in 2002<sup>20</sup>:

Mary N. Pittman  
Wife of Joseph Pittman  
B. 1748- D. 1809  
(Name and date cut on ballast stone)

Joseph Pittman  
Husband of Mary Neal Pittman  
B.c. 1746-D.c. 1832

John Pittman  
Husband of Abigail Smith Pittman  
B.c. 1785-D. 1852

Meredith Pittman  
Husband of Mary Lewis Pittman  
B. 1821 -D. 1894

Thomas Pittman  
Husband of Rebecca Smith Pittman  
B.c. 1790-D. 1864

Mary Lewis Pittman  
Wife of Meredith Pittman  
B. 1828- D. 1898

In her book, Dollie Carraway goes into details on the families living in the Turnagain Bay area. In Chapter 18 of *A History of South River*, there is information of the early Pittmans and also on other Pittman families that continued to live in the area after Elijah V. Pittman migrated from Pittman's Creek to Lenoir County, NC<sup>21</sup>

---



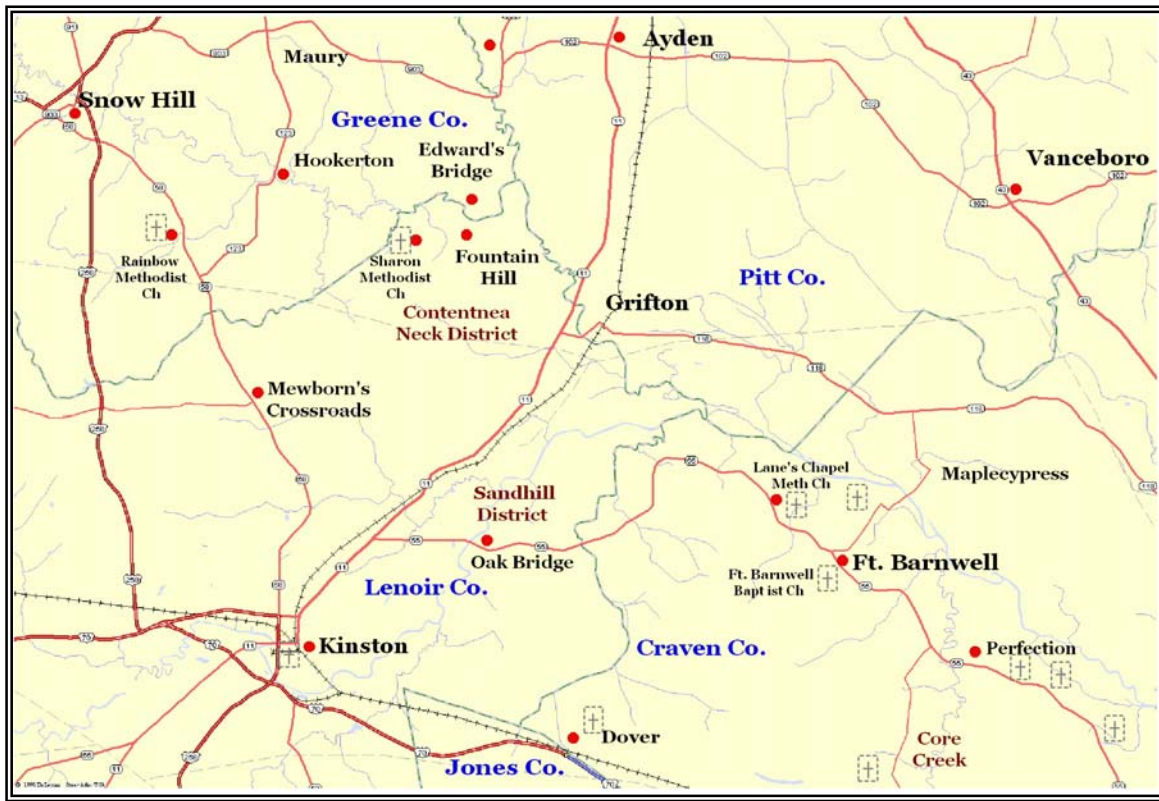
**Figure 60 Lower Neuse River Area**

*The lower Neuse River area of now Pamlico and Carteret counties of North Carolina. The early families of Joseph and Obedience Pittman owned properties in this area on both sides of the Neuse River.*

**Elijah V. Pittman** moved to New Bern sometime after his marriage to Nancy Brooks in 1807. He does not appear in the 1820 or 1830 census in either Craven or Lenoir County. He does appear as a merchant in 1824 in New Bern, and in his office of Justice of the Peace, performed the marriages in Craven County as early as 1814.<sup>22</sup>

Elijah does appear in the 1840 Lenoir County census living with two females and two other males in the household (sons Philetus and Francis). A Pittman family bible records three children, Mary Anna, Josephus, Philetus, and Francis. Elijah appears in the 1844 Lenoir County Tax list owning 241 acres valued at \$1270 with a tax assessment of \$3.81 and one black pole tax of \$0.60.<sup>23</sup> His wife, Nancy Brooks Pittman, died in 1842 and was buried at Pittman Place in Contentnea Neck in Lenoir County.<sup>24</sup>

Elijah V. Pittman appears in the 1850 Lenoir County census as age 65, along with Penelope, age 52, apparently a second wife.<sup>25</sup> A successful farmer, Elijah is also listed in 1850 Schedules 2 and 4, owning 8 slaves and farming 140 acres.<sup>26</sup> By 1850 he had divided his property with his son, Philetus Pittman. Elijah died in 1855, was buried at Pittman Place in Contentnea Neck, Lenoir County.<sup>27</sup>



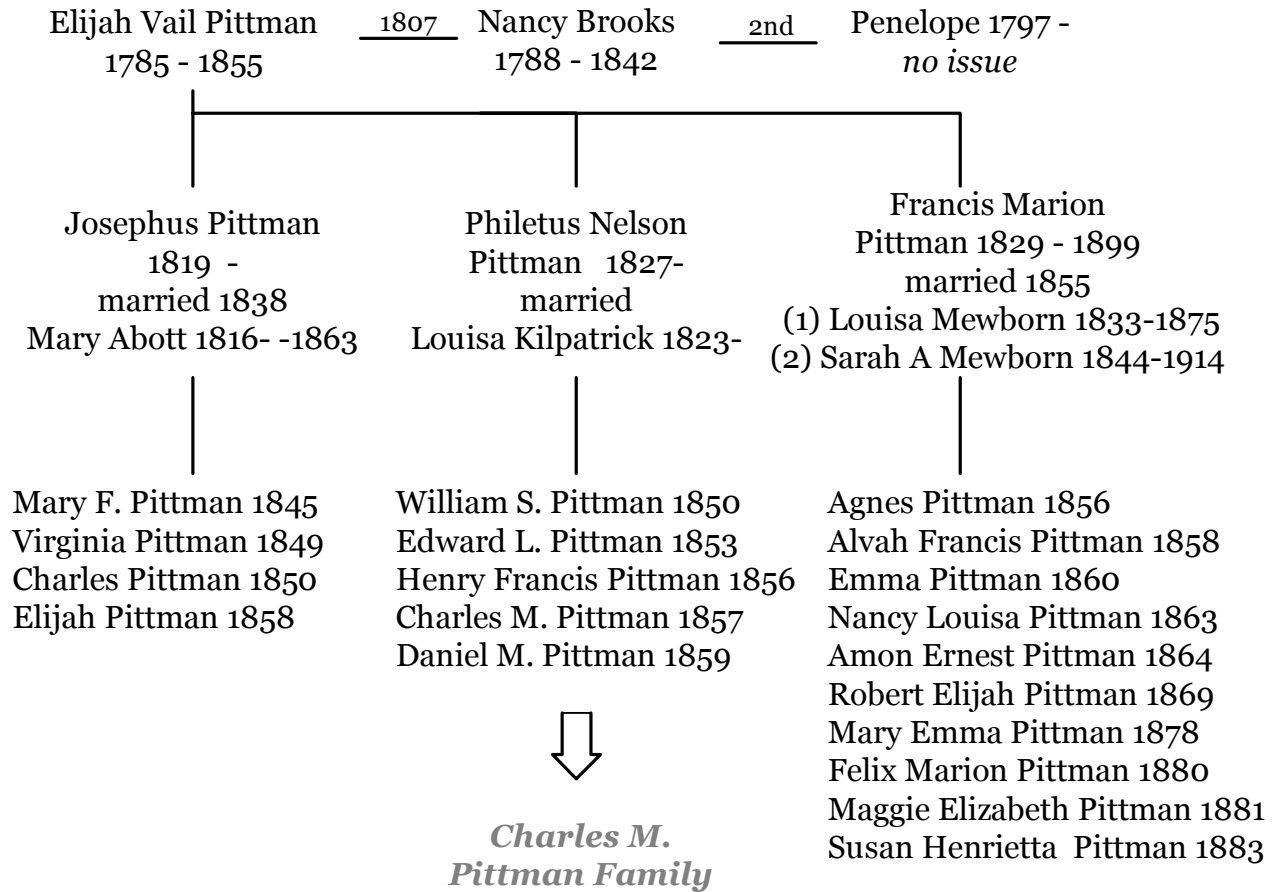
**Figure 61** Area Map of Lenoir, Greene, Pitt, and Craven Co.

*The area of northwestern Craven County, NC, including Fort Barnwell and Perfection. Elijah V. Pittman settled near Fountain Hill in the Contentnea Neck District of Lenoir County. His grandson, Charles M. Pittman lived in Fort Barnwell from 1880 to after 1900. Many of the descendants of Elijah V. Pittman settled in the area including Snow Hill, Grifton, and Ayden.*

# The Elijah Vail Pittman Family



*Early Craven Area Pittmans*



**Figure 62 The Elijah Vail Pittman Family Tree**

*After migrating to Lenoir County, Elijah Pittman founded a large family with numerous descendants, many still living in the area today.*



**Figure 63** *Pittman Place, Home of Elijah Vail Pittman*

*The home of Elijah Vail Pittman near Fountain Hill in Lenoir County. Taken in 1914, the home was on Skeeter Pond Road in the Contentnea Neck District. Also known as the Pittman-Barwick house, it was later demolished on an unknown date, and the adjoining family cemetery was destroyed by a mining operation.<sup>28</sup>*

*Photo courtesy Nancy Pittman.*

### **The Children of Elijah V. Pittman and Nancy Brooks were:**

**A. Mary Anna Pittman**, the daughter of Elijah V. Pittman, was born August 13, 1816 in Contentnea Neck, Lenoir County.<sup>29</sup> She married Edmond Brooks on September 28, 1838, the son of James Brooks.<sup>30</sup> Edmond was born on August 25, 1812 in Content Neck and died November 15, 1880. Mary died on February 1, 1881 in Contentnea Neck.<sup>31</sup>

The children of Mary Anna Pittman and Joseph Brooks were<sup>32</sup>:

1. **Joseph Henry Brooks** was born July 16, 1839 and died November 14, 1898. He married Cordelia A. Barwick on July 30, 1868.
2. **Mary Jennie Brooks** was born March 10, 1841 and married a Harper.

3. **Nancy Ann Brooks** was born on May 14, 1843 and died May 13, 1919.
4. **Henry Francis Brooks** was born April 11, 1846 and died October 1, 1917 in Pitt County. He is buried in the Ayden Cemetery, Ayden, NC.
5. **Martha Eleanor Brooks** was born April 14, 1849 and died November 27, 1910.
6. **Elijah P. Brooks** was born December 21, 1851.
7. **Samuel Willis Brooks** was born February 1, 1856 and died September 14, 1914.

**B. Josephus Pittman**, the son of Elijah V. Pittman, was born about 1819 in Lenoir County.<sup>33</sup> In the 1840 Lenoir County census, he is included in the headcount of the family. He married Mary Abbott, daughter of Thomas Abbott and Cassandra Worthington. Mary Abbott was born about 1815 and died after 1860 in Contentnea Neck. Josephus does not appear in the 1850 Lenoir census, but is listed in the 1860 Lenoir census along with wife Mary and five of his children.

The children of Mary Abbott and Josephus Pittman were<sup>34</sup>:

1. **Mary F. Pittman** was born about 1845.
2. **Virginia Pittman** was born about 1849.
3. **Charles S. Pittman** was born in 1852. He married Julia Frenny, the daughter of John Frenny and Susan.
4. **George Pittman** was born in 1853. He married Clarissa Sumerell, daughter of William Sumerell on October 10, 1879.
5. **Eave Pittman** was born 1858. (Not listed in 1860 Lenoir census, possibly died young).
6. **Elijah Pittman** was born January 1860. He married Mary Elizabeth Tucker on November 28, 1899. Mary was the daughter of John and Mary Tucker. She was born in July 1867.
7. **Sarah Ann (Sallie) Pittman** was born October 12, 1863 and died June 26, 1935.
8. **Bettie Pittman** was born October 27, 1866 and died July 18, 1933 in Beaufort County. She married Edward Fenner Adams. Edward was born August 15, 1867 and died June 1, 1923 in Beaufort County.

Josephus Pittman married (2) Louisa Blount about 1867. She was born in 1840<sup>35</sup>.

---



Their children were:

9. **Joseph Sharp Pittman** was born September 08, 1870 and died August 11, 1928 in the Swift Creek Township of Pitt County. He is buried in the St. John's Episcopal Cemetery near Grifton, NC.<sup>36</sup>

10. **William Pittman.**

**C. Philetus Nelson Pittman**, the son of Elijah V. Pittman, was born about 1827 and died after 1880. He was listed in the household of Elijah in the 1840 Lenoir census.<sup>37</sup> He married Louisa Kilpatrick sometime in 1849-1850.<sup>38</sup> She was about born 1823. He is listed on 1850 Schedules 1, 2, and 4 on the 1850 Lenoir census. He was listed as a farmer, owning 100 acres and 2 slaves.<sup>39</sup> The property was partitioned from the 240 acres listed by father, Elijah, on the 1844 Lenoir tax listing.<sup>40</sup>

In 1860, Philetus and Louisa Pittman appear in the Lenoir census, along with sons William S., Edward L., Charles M., and Daniel M in the Contentnea Neck District.<sup>41</sup>

In 1870, Philetus and Louisa Pittman appear in the Lenoir census, along with sons William S., Henry F., Edward L., Charles M., and Daniel M., residing in the Contentnea Neck District.<sup>42</sup>

In 1879, the death of son, Daniel Pittman on January 6, was recorded in the January 10<sup>th</sup> edition of the Kinston Journal. <sup>43</sup>

In 1880, Philetus and Louisa Pittman appear in the Lenoir census, along with son Henry Pittman, age 25, residing in Kinston, NC.<sup>44</sup>

---

**The children of Philetus N. Pittman and Louisa Kilpatrick were:**

1. **William S. Pittman** was born November 19, 1850 and died on October 1, 1910. He is buried in the Sharon Methodist Church Cemetery near Hugo in Lenoir County. He married Julia Barwick, daughter of Isaac Barwick and Louisa Baker. Julia was born September 18, 1852 in Lenoir County and died March 5, 1921 in Lenoir County.<sup>45, 46</sup>
2. **Edward L. Pittman** was born about 1853.<sup>47</sup>
3. **Henry F. Pittman** was born about 1856.<sup>48</sup>
4. **Charles Manly Pittman** was born May 11, 1857 and died November 20, 1950. He is buried in the Maplewood Cemetery in Kinston, NC.<sup>49</sup>
5. **Daniel M. Pittman** was born about 1859 and died January 6, 1879.<sup>50, 51</sup>

**D. Francis Marion Pittman**, the son of Elijah V. Pittman, was born September 11, 1829 in Lenoir County. He married (1<sup>st</sup>) Louisa Mewborn, daughter of Lemuel Hardy Mewborn and Louisa Kilpatrick, on March 27, 1855. Louisa Mewborn was born on December 17, 1833 and died October 15, 1875 in Kinston, NC. He married (2<sup>nd</sup>) Sarah Ann Mewborn, sister of Louisa about 1878. Sarah Ann Mewborn was born September 26, 1844 and died in Kinston on March 14, 1914. Francis M. Pittman died in January 1, 1899 in Grifton, NC.<sup>52</sup>

Francis M. Pittman is listed in the 1840 Lenoir census in the headcount of his father, Elijah Pittman.<sup>53</sup> In 1850, Francis is still living in his father's household.<sup>54</sup> In 1860, Francis M. Pittman is head of household in the Contentnea District of Lenoir County along with wife Louisa and three children.<sup>55</sup> In 1870, the family is still living in the Contentnea Neck District of Lenoir County.<sup>56</sup> In the 1800 Lenoir census, Francis M. Pittman is listed with 2<sup>nd</sup> wife Sarah Mewborn Pittman along with five children of the first marriage and two of children of the second marriage.<sup>57</sup>

**The children of Francis Marion Pittman and Louisa Mewborn were<sup>58</sup>:**

1. **Agnes Pittman** was born February 16, 1856 in Fountain Hill. She married George B. Webb and she died in May 1930.
  2. **Alvah Francis Pittman** was born on December 22, 1857 in Fountain Hill. He married Luvenia S. Tripp and he died in May 1926.
  3. **Emma Pittman** was born on January 16, 1860 in Coward's Bridge, Lenoir County and died May 1930.
-

4. **Nancy Louisa Pittman** was born on March 22, 1862 in Coward's Bridge, Lenoir County. She married S. Brock Bruton.
5. **Amon Ernest Pittman** was born on November 5, 1864 in Hookerton in Greene County, NC. He married Kathleen Mary Wood in 1889. They are buried in Cedar Grove Cemetery in New Bern, NC.
6. **Robert Elijah Pittman** was born on August 31, 1867 at Pittman Place in Lenoir County and died January 12, 1936 in Roxboro, Person County, NC.

**The children of Francis M. Pittman and Sarah Ann Mewborn were<sup>59</sup>:**

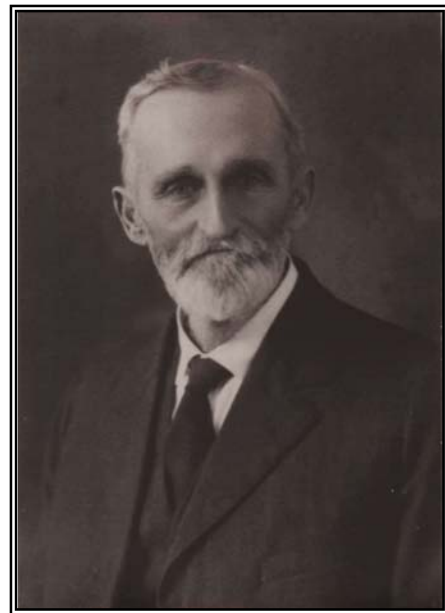
7. **Mary Anna Pittman** was born on June 4, 1878 in Lenoir County. She married W. T. Purvis on December 2, 1908.
8. **Felix Marion Pittman** was born on February 4, 1880 at Pittman Place in Lenoir County. He married Annie Spriggs in July 1907.
9. **Maggie Elizabeth Pittman** was born May 31, 1881 at Pittman Place in Lenoir County. She married Joseph C. Rasberry on November 5, 1903.
10. **Susan Henrietta Pittman** was born August 9, 1883 in Grifton, NC and married Hardy P. Loftin in April 1905. She died on May 5, 1962.

---

## The Charles Manly Pittman Family

**Charles Manly Pittman**, son of Philetus Pittman, was born on May 11, 1857 in Lenoir County and died November 20, 1950.<sup>60</sup> He married Annie Gooding on December 20, 1880 at the residence of Julia Lane Gooding, in Craven County.<sup>61</sup> Annie was the daughter of Francis Counsel Gooding and Julia Lane.<sup>62</sup> She was born on June 18, 1857 in Russell's District, Craven County and died December 5, 1954. They are buried in the Maplewood Cemetery in Kinston, NC.<sup>63</sup>

Charles M. Pittman first appears in the 1860 Lenoir County census, in the home of his father, Philetus Pittman, in the Contentnea Neck District.<sup>64</sup> In 1870, he appears in the Lenoir census, again, in the home of Philetus Pittman in Contentnea Neck.<sup>65</sup>



**Figure 64** *Photo of Charles Manly Pittman*

---

Charles M. Pittman migrated to Craven County sometime before 1880. He is listed in the 1880 Craven Census in the 9<sup>th</sup> Township, newly married to Annie Gooding. He is listed as a farmer and head of household, also living with Julia Gooding, mother-in-law and sister-in-law Hallie Gooding.<sup>66</sup> In 1900, Charles is listed in 3<sup>rd</sup> Township of Craven County as a farmer living at Fort Barnwell, NC along with wife, Annie<sup>67</sup>. All of the children are listed in the home except Harold Pittman, then a boarder in Cove City.<sup>68</sup>



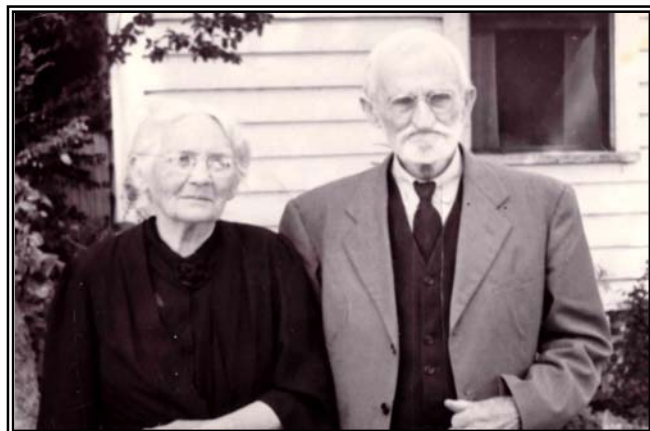
**Figure 65** *Photo of Annie Gooding Pittman*

In 1910, the family is listed in the Lenoir County census in the Kinston Township. Listed are Charles, his wife, Annie, and children James, Rosa, and Annie. The only person listed with an occupation in 1810 was Rosa, age 17, telephone operator.<sup>69</sup>

Again in 1910, Charles and Annie were listed living in Kinston, NC on the marriage license of daughter, Eva Lane Pittman to John William Humphrey.<sup>70</sup>

In 1912, the Charles Pittman family was living in Kinston, when a marriage license was issued to Rosa Pittman and Jay Lee Humphrey on July 31, 1912.<sup>71</sup>

Charles and Annie Pittman are listed again in the 1920 Craven County census residing in Clarks, in the 8<sup>th</sup> Township.<sup>72</sup> The residence was the home on New Liberty Road in Clarks, built circa 1916.<sup>73</sup> Charles is listed as a farmer, along with sons Henry and Robert. Henry is listed as a farmer and Robert as a clerk in a café (location not reported). The Charles Pittman family later moved back to the Kinston, NC area. Charles and Annie Pittman are buried in the Maplewood Cemetery along with all 5 sons.<sup>74</sup>



**Figure 66** *Charles and Annie Pittman, c. 1940*

*Photo taken in Beaufort, NC*

**The children of Charles M. Pittman and Annie Gooding were:**

- A. **Harold C. Pittman** (1880-1960)
- B. **Henry Bryan Pittman** (1882-1954)
- C. **Hattie G. Pittman** (1884-1913)
- D. **Eva Lane Pittman** (1886-1973)
- E. **Samuel Lane Pittman** (1888-1938)
- F. **James Kilpatrick Pittman** (1890-1967)
- G. **Stella Rosa Pittman** (1892-1942)
- H. **Annie Pittman** (1894-1983)
- I. **Robert Belo Pittman** (1899-1983)

A. **Harold C. Pittman** was born on October 7, 1880 in Craven County and died May 11, 1960.<sup>75</sup> Harold appears in the 1900 Craven census living in Cove City, NC as a boarder in the household of William Sauls, a merchant.<sup>76</sup> In the 1904-1905 New Bern City Directory, Harold Pittman is listed as an agent for the Life Insurance Company of Virginia, with an office at 135 1/2 Middle Street.<sup>77</sup> He married Vare (Vera) C. Hancock on July 14, 1914 in Craven County.<sup>78</sup> Vera is reported buried in Cedar Grove Cemetery, but no record of her burial has been found.<sup>79</sup> In the 1930s, Harold lived in Clarks near the Clarks Methodist Church.<sup>80</sup> Harold Pittman is buried in the Maplewood Cemetery in Kinston, NC.

B. **Henry Bryan Pittman** was born on April 7, 1882 in Craven County and died October 15, 1954.<sup>81</sup> He is listed in the 1900 Craven census in Ft. Barnwell, in the household of his parents. He married (1<sup>st</sup>) Estelle Newland about 1906.<sup>82</sup> In the 1910 Craven census, Henry and Estelle Pittman are listed living in Cove City along with daughter, Muriel Pittman.<sup>83</sup> In the 1920 Craven census, Henry is listed living with his parents in Clarks, occupation farmer.<sup>84</sup> He married (2<sup>nd</sup>) Rosalie (Rosa Lee) Bland on February 18, 1921 in Craven County.<sup>85</sup> They are buried in the Maplewood Cemetery in Kinston, NC.

C. **Hattie G. Pittman** was born on May 29, 1884 in Craven County and died on April 12, 1913.<sup>86</sup> Hattie is listed living with her parents in Ft. Barnwell in the 1900 Craven census.<sup>87</sup> Hattie Pittman married Raymond C. Russell on February 27, 1904 in Craven County. In the 1910 Craven census, Hattie and Raymond Russell are listed living with son, Charles H. Russell, in the Fort Barnwell Precinct.<sup>88</sup> Hattie is buried in the Ft. Barnwell Baptist Church cemetery along with Raymond C. Russell (1879-1968), sons Gordon Russell (1907-1908) and Howard Russell (1909-1920). After Hattie's death, Raymond Russell married (2<sup>nd</sup>) Esther J. Russell (1894-1975).<sup>89</sup> Hattie's daughter, Ruby Russell Fulcher, is living in 2002.

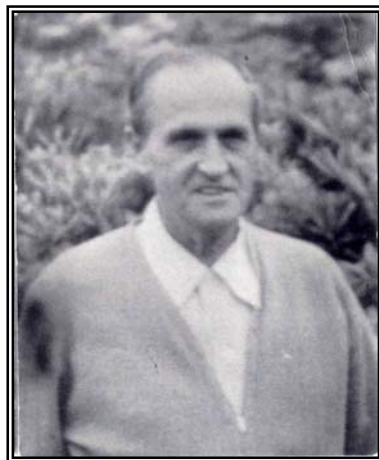
---

D. **Eva Lane Pittman** was born on April 14, 1886 in Craven County and died on June 15, 1973.<sup>90</sup> In the 1900 Craven census, Eva Pittman is listed living in Fort Barnwell in the home of her parents.<sup>91</sup> Eva Pittman married John William Humphrey (1884-1942) on December 22, 1910.<sup>92</sup> Eva and John Humphrey are listed in the 1920 Craven census residing in Clarks, NC along with children John, Harriet, and Marjorie.<sup>93</sup> During the 1920s they moved to Beaufort, NC where John Humphrey operated a dairy. In 1941, the family moved to Front Street in Beaufort.<sup>94</sup> John W. Humphrey died in 1942 and was buried in the Oceanview Cemetery in Beaufort, NC.<sup>95</sup> Eva Lane Humphrey later resided in Elm City, NC with her son John P. (Jack) Humphrey. Eva Pittman Humphrey died on June 15, 1973 and was buried in the Oceanview Cemetery in Beaufort, NC.<sup>96</sup>

*See Chapter 8, The John William Humphrey Family.*

E. **Samuel Lane Pittman** was born on September 13, 1880 and died on June 26, 1938.<sup>97</sup> In the 1900 Craven census, Samuel was living in his parent's home in Fort Barnwell.<sup>98</sup> He married Isa Dora Wetherington on April 4, 1915 in Craven County.<sup>99</sup> Samuel Pittman died in auto crash 1938 near Kinston, NC. He is buried in the Maplewood Cemetery in Kinston, NC. Isa W. Pittman, the daughter of Amos T. Wetherington and Virginia Eubanks, was born on July 19, 1893 in Craven County and died on January 7, 1980 in Craven County. She is buried in the Maplewood Cemetery in Kinston, NC.<sup>100</sup>

E. **James Kilpatrick Pittman** was born on April 5, 1890 in Craven County and died on October 10, 1967.<sup>101</sup> In the 1900 Craven census, James was living in the home of his parents in Fort Barnwell, NC.<sup>102</sup> In 1910, James is listed in the Lenoir census living in Kinston with his parents.<sup>103</sup> James married Helen Archer after WWI. Helen was a Nurse in the Army Nurse Corps in WWI and James was a PFC in the Army Medical Corp in WWI. In 1942, the obituary of his sister, Rosa P. Humphrey reports James as living in Washington, DC.<sup>104</sup> James and Helen Pittman are buried in the Maplewood Cemetery in Kinston, NC.<sup>105</sup>



**Figure 67 James K. and Helen A. Pittman**

**G. Stella Rosa (Rose) Pittman** was born on May 29, 1892 and died on July 1, 1942.<sup>106</sup> In the 1900 Craven census, Rose was listed in the home of her parents in Fort Barnwell.<sup>107</sup> In 1910, Rose was living in Kinston in the home of her parents. Her occupation was listed as telephone operator in the 1910 census. In 1912 Rose married Jay Lee Humphrey in Lenoir County.<sup>108</sup> In the 1920 Craven census, Rose and Jay Lee lived in Clarks along with three children.<sup>109</sup> Upon her death, Rose was buried in the Maplewood Cemetery in Kinston. Prior to 1964 she was interred in the Greenleaf Memorial Cemetery in New Bern, NC. Jay Lee Humphrey, the son of John Humphrey and Julia E. Arnold, was born on August 16, 1881 and died on June 29, 1964.<sup>110</sup> Jay Lee Humphrey is buried in the Greenleaf Memorial Cemetery in New Bern, NC.<sup>111</sup>

*See Chapter 7, The Jay Lee Humphrey Family.*

**H. Annie Eliza Pittman** was born on November 24, 1894 in Craven County and died on April 19, 1983.<sup>112</sup> In the 1900 Craven census, Annie is listed in the home of her parents in Fort Barnwell.<sup>113</sup> In the 1920 Lenoir census, Annie was living with here parents in Kinston, NC. Annie married Ralph W. Dail, Sr. (1891-1941) and resided in Snow Hill, NC. Ralph and Annie Dail area buried in Rainbow Methodist Church Cemetery near Snow Hill, NC along with daughters Margaret Dail Hart and Louise Dail Junkin.

**J. Robert Belo Pittman** was born on February 25, 1899 in Craven County and died on October 27, 1983 in Craven County.<sup>114</sup> In the 1900 Craven census, Robert is listed in the home of his parents in Fort Barnwell.<sup>115</sup> In the 1920 Craven census, he was living with his parents in Clarks, NC.<sup>116</sup> Robert married Vera Edward Hill on March 24, 1928 in Vanceboro, Craven County and resided in Clarks, NC. An infant child is buried in a now unmarked grave in the Humphrey Cemetery in Clarks, NC.<sup>117</sup> Vera Hill Pittman was born in Carteret County on May 10, 1909 and died on December 17, 1997 in Craven County.<sup>118</sup> Robert and Vera Pittman are buried in the Maplewood Cemetery in Kinston, NC.

**Grandchildren of Charles M. Pittman and Annie Gooding were<sup>119, 120:</sup>**

A. Harold C. Pittman and Vera C. Hancock

a. No known children

B. Henry Bryan Pittman and Estelle Newland

a. Muriel Pittman

b. Gladys Pittman

Henry B. Pittman and Rosa Lee Bland

a. Henry B. Pittman, Jr.

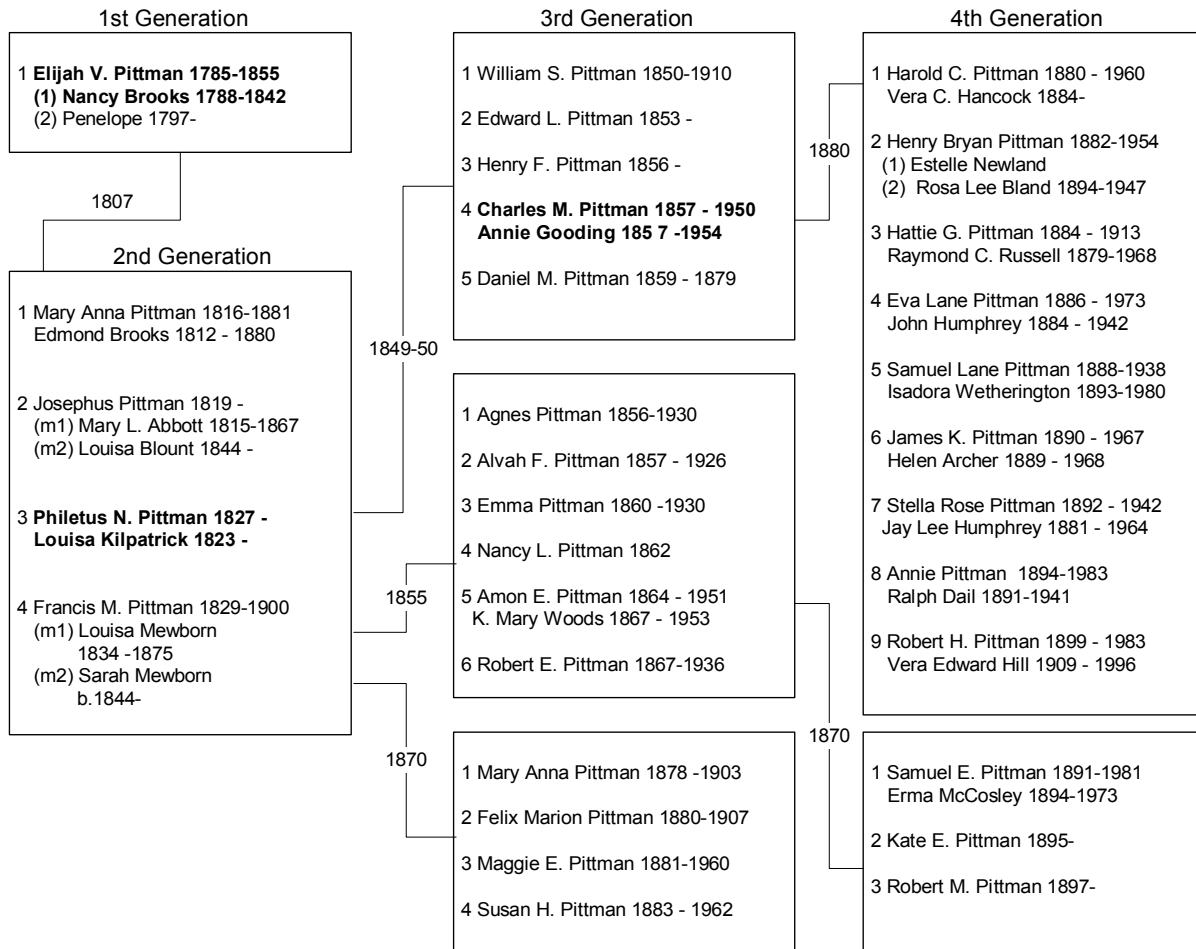
b. Alvin Earl Pittman

---

- 
- C. Hattie G. Pittman and Raymond C. Russell
    - a. Gordon Russell
    - b. Charles Howard Russell
    - c. Ruby Russell Fulcher
  
  - D. Eva Lane Pittman and John William Humphrey
    - a. John (Jack) Pittman Humphrey
    - b. Harriet Lee Humphrey Phillips
    - c. Marjorie Faye Humphrey Linnemeier
    - d. Robert Pittman Humphrey
  
  - E. Samuel Lane Pittman and Isa D. Wetherington
    - a. Samuel Lane Pittman, Jr.
    - b. Charles Manly Pittman
    - c. Ethel Joyce Pittman Simpson
  
  - F. James Kilpatrick Pittman and Angeline Helen Archer
    - a. No known children
  
  - G. Stella Rosa (Rose) Pittman and Jay Lee Humphrey
    - a. Laura Eleanor Humphrey
    - b. Doris Lee Humphrey McCombs
    - c. Jay Lee Humphrey, Jr.
    - d. Harold Bumpas Humphrey
    - e. Donald Holmes Humphrey
    - f. William Grey Humphrey
    - g. James Carroll Humphrey
    - h. Hal Foscue Humphrey (twin)
    - i. Helen Archer Humphrey Ferguson (twin)
    - j. Charles Manly Humphrey
  
  - H. Annie Eliza Pittman and Ralph W. Dail
    - a. Annie Pittman Dail Lane
    - b. Margaret Dail Hart
    - c. Louise Dail Junkin
    - d. Ralph Dail, Jr.
    - e. Cary Dail
  
  - I. Robert Belo Pittman and Vera Edward Hill
    - a. Infant in Humphrey Cemetery (unmarked, no dates).
-



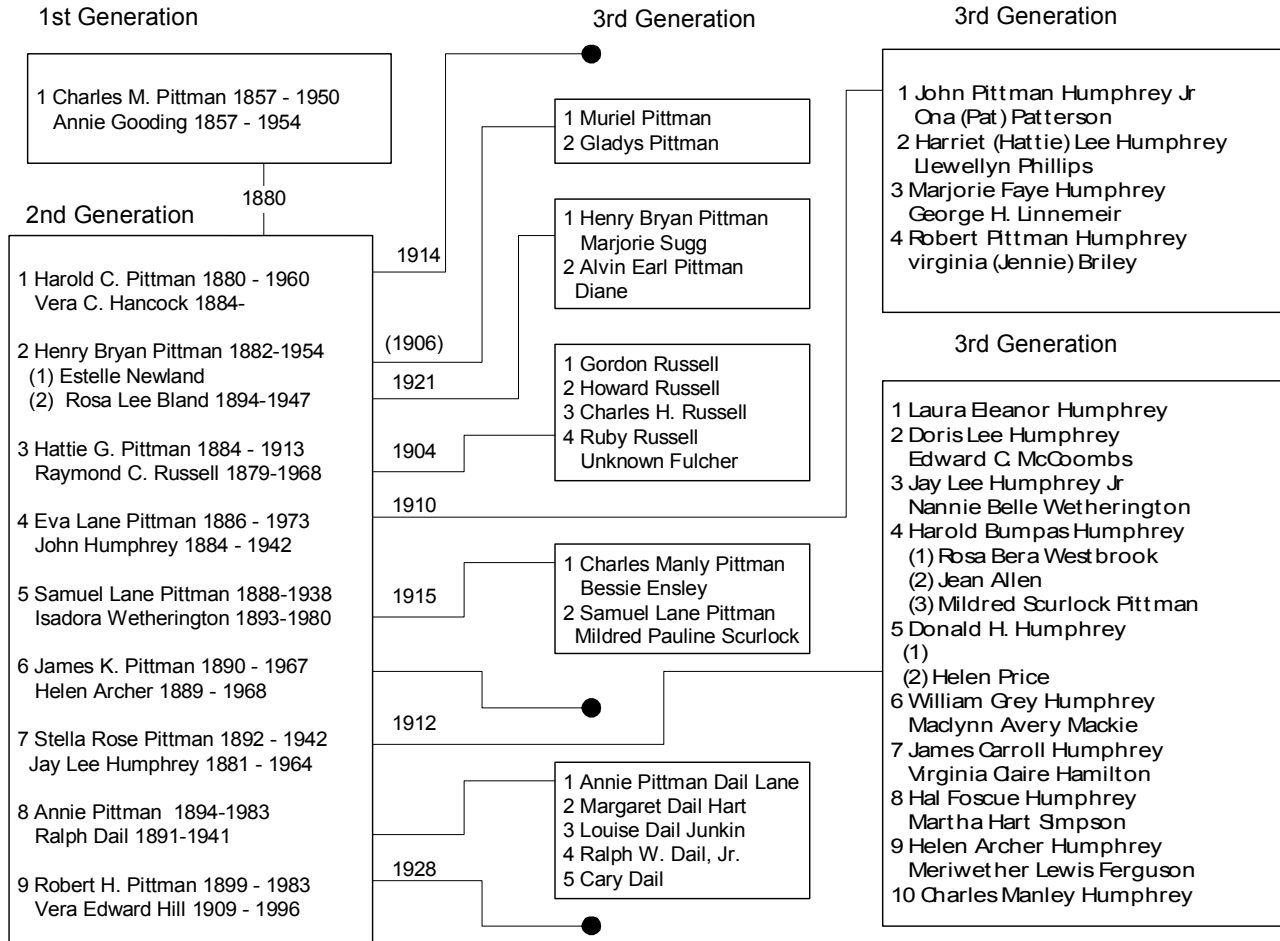
## Overview of Elijah V. Pittman Family



**Figure 68 Overview of Elijah V. Pittman Family**

*A chart of the large Elijah V. Pittman extended family (four generations) resided mostly in Lenoir, Pitt, Greene, and Craven Counties.*

## Overview of Charles M. Pittman Family



**Figure 69 Overview of Charles M. Pittman Family**

*The first generation descendants of Charles M. Pittman were born in Craven County. They migrated throughout the Craven area and lived mostly in Craven, Carteret, Lenoir, Greene, and Pitt counties of North Carolina.*

---

**Endnotes Chapter 11 The Elijah Vail Pittman Family**

- <sup>1</sup> Accomac Co, VA Deeds. Book 1678-11690, Page 363.
  - <sup>2</sup> Monograph on Joseph Pittman. 1942. Mrs. W. T. Purvis. Heritage Place (Library). Lenoir County.
  - <sup>3</sup> Craven County Deed Book 2, page 608. Microfilm. Craven County Library.
  - <sup>4</sup> Craven County Deed Book 2, page 634. Microfilm. Craven County Library.
  - <sup>5</sup> Craven County Deed Book 1, page 284. Microfilm. Craven County Library.
  - <sup>6</sup> Monograph on Joseph Pittman. 1942. Purvis. Heritage Place Library. Lenoir County.
  - <sup>7</sup> Craven County Wills. Book 5, Page 392. Joseph Pittman, 1747. Microfilm. Craven County Library.
  - <sup>8</sup> Monograph on Joseph Pittman. 1942. Purvis. Heritage Place Library. Lenoir County.
  - <sup>9</sup> Craven County Deed Book 12-13, page 4. Microfilm. Craven County Library.
  - <sup>10</sup> Craven County Deed Book 25, page 539. Microfilm. Craven County Library.
  - <sup>11</sup> A History of South River. Carraway. 19XX.
  - <sup>12</sup> Craven County Estates. 1787. John Veale. Microfilm. Craven County Library.
  - <sup>13</sup> Craven County Deed Book ?, page ? . Microfilm. Craven County Library
  - <sup>14</sup> Craven County Marriage Index. 1780-1867. Craven County Library.
  - <sup>15</sup> Our Living and Our Dead. Volume 1. Page 242. Craven County Library.
  - <sup>16</sup> Monograph on Joseph Pittman. 1942. Purvis. Heritage Place Library. Lenoir County.
  - <sup>17</sup> Craven County Deeds. Microfilm. Craven County Library.
  - <sup>18</sup> Lenoir County Census, 1840. Microfilm. Craven County Library.
  - <sup>19</sup> A History of South River. Carraway. Chapter 18. Library of author.
  - <sup>20</sup> Ibid.
  - <sup>21</sup> Ibid.
  - <sup>22</sup> Craven County Marriage Index. 1780-1867. Craven County Library.
  - <sup>23</sup> 1844 Lenoir County Tax List. NC Archives and History. Raleigh, NC.
  - <sup>24</sup> Monograph on Joseph Pittman. 1942. Purvis. Heritage Place Library. Lenoir County.
  - <sup>25</sup> 1850 Lenoir County Census. Page 145A. Microfilm. Craven County Library.
  - <sup>26</sup> 1850 Lenoir county Census. Schedule 2, Page 5, Schedule 4, Page 1. Microfilm. Craven County Library.
  - <sup>27</sup> Monograph on Joseph Pittman. 1942. Purvis. Heritage Place Library. Lenoir County.
  - <sup>28</sup> Information from Nancy Pittman. Lenoir County. 2002.
  - <sup>29</sup> Pittman Brooks Bible. Heritage Place. Lenoir County.
  - <sup>30</sup> Ibid.
  - <sup>31</sup> Ibid.
  - <sup>32</sup> Ibid.
  - <sup>33</sup> Ibid.
  - <sup>34</sup> Ibid.
  - <sup>35</sup> Ibid.
  - <sup>36</sup> Ibid.
  - <sup>37</sup> 1840 Lenoir County Census. Microfilm. Craven County Library.
  - <sup>38</sup> 1850 Lenoir County Census. Page 145A. Microfilm. Craven County Library.
  - <sup>39</sup> 1850 Lenoir County Census. Schedule 2, Page 5. Microfilm. Craven County Library.
  - <sup>40</sup> 1850 Lenoir County Census. Schedule 4, Page 1. Microfilm. Craven County Library.
  - <sup>41</sup> 1860 Lenoir County Census, Contentnea Neck District. Microfilm. Craven County Library.
  - <sup>42</sup> 1870 Lenoir County Census, Contentnea Neck District. Microfilm. Craven County Library.
  - <sup>43</sup> Excerpts from the Kinston Journal. NC Archives and History. Raleigh, NC.
  - <sup>44</sup> 1880 Lenoir County Census, Contentnea Neck District. Microfilm. Craven County Library.
  - <sup>45</sup> Pittman Brooks Bible. Heritage Place. Lenoir County
  - <sup>46</sup> Sharon Methodist Church Survey. A. Humphrey. 2002.
  - <sup>47</sup> 1860 Lenoir County Census. Contentnea Neck District. Microfilm. Craven County Library.
  - <sup>48</sup> Ibid.
  - <sup>49</sup> Survey of Pittman plot, Maplewood Cemetery. Kinston, NC by A. Humphrey. 2001.
  - <sup>50</sup> 1860 Lenoir County Census. Contentnea Neck District. Microfilm. Craven County Library.
  - <sup>51</sup> Excerpts from the Kinston Journal. NC Archives and History. Raleigh, NC.
  - <sup>52</sup> Pittman Brooks Bible. Heritage Place. Lenoir County.
  - <sup>53</sup> 1840 Lenoir County Census. Microfilm. Craven County Library.
  - <sup>54</sup> 1850 Lenoir County Census. Page 145A. Microfilm. Craven County Library.
  - <sup>55</sup> 1860 Lenoir County Census, Contentnea Neck District. Microfilm. Craven County Library.
  - <sup>56</sup> 1870 Lenoir County Census, Contentnea Neck District. Microfilm. Craven County Library.
  - <sup>57</sup> 1880 Lenoir County Census, Contentnea Neck District. Microfilm. Craven County Library.
  - <sup>58</sup> Pittman Brooks Bible. Heritage Place. Lenoir County.
  - <sup>59</sup> Ibid.
  - <sup>60</sup> Survey of Pittman plot, Maplewood Cemetery. Kinston, NC by A. Humphrey. 2001.
-

- 
- 61 Craven County Marriages, 1851-1905. Volume 1-7. Microfilm. Craven County Library.
  - 62 1850 Craven County Census. Microfilm. Craven County Library.
  - 63 Survey of Pittman plot, Maplewood Cemetery. Kinston, NC by A. Humphrey. 2001.
  - 64 1860 Lenoir County Census, Contentnea Neck District. Microfilm. Craven County Library.
  - 65 1870 Lenoir County Census, Contentnea Neck District. Microfilm. Craven County Library.
  - 66 1880 Craven County Census. 3<sup>rd</sup> Township. Microfilm. Craven County Library.
  - 67 1900 Craven County Census. Page 51B, Ft. Barnwell Precinct. Microfilm. Craven County Library.
  - 68 1900 Craven County Census. Page 51A, Ft. Barnwell Precinct. Microfilm. Craven County Library.
  - 69 1910 Lenoir County Census. Kinston Township. Microfilm. Craven County Library.
  - 70 Craven County Marriages 1910. Microfilm. Craven County Library.
  - 71 Lenoir County Marriages 1912. Microfilm. Craven County Library.
  - 72 1920 Craven County Census. 8<sup>th</sup> Township. Microfilm. Craven County Library.
  - 73 Craven County GIS Database. 2001. Date of Building from data file. Craven County Tax Office.
  - 74 Survey of Pittman plot, Maplewood Cemetery. Kinston, NC by A. Humphrey. 2001.
  - 75 Ibid.
  - 76 1900 Craven County Census. Page 51B, Ft. Barnwell Precinct. Microfilm. Craven County Library.
  - 77 1904 -1905 New Bern City Directory. Craven County Library.
  - 78 Craven County Marriages, 1914. Microfilm. Craven County Library.
  - 79 Reported by H. B. Humphrey. No listing in Cedar Grove 1939 WPA list, Craven Co, NC Cemeteries, Volume 1, or Cedar Grove Addendum by E. P. Beauchamp.
  - 80 Interview with Nannie Humphrey. 2002 by author.
  - 81 Survey of Pittman plot, Maplewood Cemetery. Kinston, NC by A. Humphrey. 2001.
  - 82 1910 Craven County Census. 3<sup>rd</sup> Township. Microfilm. Craven County Library.
  - 83 Ibid.
  - 84 1920 Craven County Census. 8<sup>th</sup> Township. Microfilm. Craven County Library.
  - 85 Craven County Marriages, 1921. Microfilm. Craven County Library.
  - 86 Craven County, NC Cemeteries, Volume 1. Craven County Library.
  - 87 1900 Craven County Census. Page 51B, Ft. Barnwell Precinct. Microfilm. Craven County Library.
  - 88 1910 Craven County Census. 3<sup>rd</sup> Township. Microfilm. Craven County Library.
  - 89 Craven County, NC Cemeteries, Volume 2. Craven County Library.
  - 90 Survey of Humphrey plot, Oceanview Cemetery, Beaufort, NC by A. Humphrey. 2002.
  - 91 1900 Craven County Census. Page 51B, Ft. Barnwell Precinct. Microfilm. Craven County Library.
  - 92 Craven County Marriages, 1910. Microfilm. Craven County Library.
  - 93 1920 Craven County Census. 8<sup>th</sup> Township. Microfilm. Craven County Library.
  - 94 Obituary of John W. Humphrey, 1942. Beaufort News. Carteret Obituaries, Vol. 1. Craven County Library.
  - 95 Survey of Humphrey plot, Oceanview Cemetery, Beaufort, NC by A. Humphrey. 2002.
  - 96 Ibid.
  - 97 Survey of Pittman plot, Maplewood Cemetery. Kinston, NC by A. Humphrey. 2001.
  - 98 1900 Craven County Census. Page 51B, Ft. Barnwell Precinct. Microfilm. Craven County Library.
  - 99 Craven County Marriages, 1915. Microfilm. Craven County Library.
  - 100 Survey of Pittman plot, Maplewood Cemetery. Kinston, NC by A. Humphrey. 2001.
  - 101 Ibid.
  - 102 1900 Craven County Census. Page 51B, Ft. Barnwell Precinct. Microfilm. Craven County Library.
  - 103 1910 Lenoir County Census. Kinston Township. Microfilm. Craven County Library.
  - 104 Obituary. Rose P. Humphrey. New Bern Sun Journal. July 2, 1942. Microfilm. Craven County Library.
  - 105 Survey of Pittman plot, Maplewood Cemetery. Kinston, NC by A. Humphrey. 2001.
  - 106 Heritage of Craven County, Volume 1, 1984. Craven County Library.
  - 107 1900 Craven County Census. Page 51B, Ft. Barnwell Precinct. Microfilm. Craven County Library.
  - 108 1910 Lenoir County Census. Kinston Township. Microfilm. Craven County Library.
  - 109 1920 Craven County Census. 8<sup>th</sup> Township. Microfilm. Craven County Library.
  - 110 Heritage of Craven County, Volume I., 1984. Craven County Library.
  - 111 Craven County, NC Cemeteries, Volume 2. Craven County Library.
  - 112 Survey of Rainbow Methodist Church Cemetery. Greene County, NC. A. Humphrey. 2002.
  - 113 1900 Craven County Census. Page 51B, Ft. Barnwell Precinct. Microfilm. Craven County Library.
  - 114 Survey of Pittman plot, Maplewood Cemetery. Kinston, NC by A. Humphrey. 2001.
  - 115 1900 Craven County Census. Page 51B, Ft. Barnwell Precinct. Microfilm. Craven County Library.
  - 116 1920 Craven County Census. 8<sup>th</sup> Township. Microfilm. Craven County Library.
  - 117 Interview with Nannie W. Humphrey by A. Humphrey. 2001.
  - 118 Survey of Pittman plot, Maplewood Cemetery. Kinston, NC by A. Humphrey. 2001.
  - 119 List of Grandchildren and Great Grandchildren compiled by Virginia C. Humphrey. 2000.
  - 120 Summary of Chapter 11 descendants. A. Humphrey.
-