



The Life of
Frank Henry Tull
Born 1893
Died 1947-1958

by Granddaughter Robin Yonash
March, 2013

Table of Contents

Early Years	1
Marriage and Children	2
World War I	4
On the Way to California.....	4
Life in California	4
Life after California.....	6
Frank Tull Genealogy.....	6
Ancestry.....	6
George F. Tull Ancestry.....	7
Nancy Davis (Daisie) Lewis Ancestry.....	8
Descendants.....	9
Map of Frank's Locations.....	10

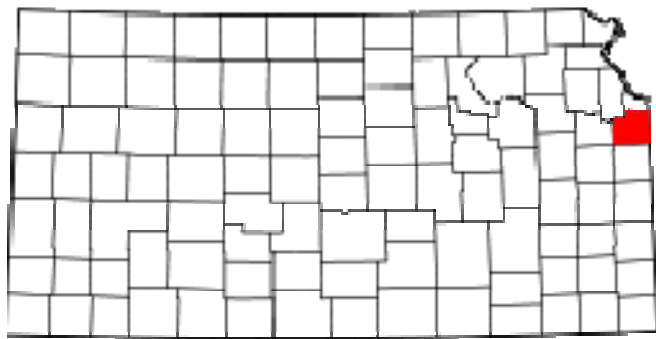
Early Years

Frank Henry Tull was born on 10 May 1893 in Stilwell, Johnson County, Kansas where his parents had a farm near Aubry. He was the second of six children, and the first of four sons, born to George F. Tull (1864–1931) and Nancy Davis (Daisie) Lewis (1866–1958). For details on Frank’s ancestry, see the section “Frank Tull Genealogy” below.

His name is given as Henry F. on some childhood Census records, but as Frank H. on later Census records, Voter Registration records, and on his WWI military records. Both versions appear on vital records for his wife and daughters. Frank H. is used here as that is what he chose to call himself as an adult.

The 1910 Census shows Frank as a laborer on the family farm near Aubry at age 16. He had gray eyes, dark brown hair, a medium complexion, and was 5' 9-1/4" in height.¹

“Stilwell, one of the new towns that has grown up in the southeastern part of Johnson county, is located on the Missouri Pacific R. R. 10 miles from Olathe, the county seat. The railroad was the making of the town, which has a good public school; several churches and general stores, a blacksmith and wagon shop, implement and hardware house, lumber yard, express and telegraph facilities, and a money order post office with one rural route. In 1910 its population was 200. Being the only large town in the southeastern part of the county it is the shipping and supply point for a rich agricultural district and does considerable business. The town was formerly known as Mount Auburn, the name having been changed by act of the legislature, approved March 2, 1889.”²



Stilwell is located “about one-half mile east of “Old Aubry,” but the two towns are practically one and have a population of about 300. The plat for Mt. Auburn, now Stilwell, was filed November 30, 1886, by Michael O’Keefe, J. Larkin, W. A. Kelly and A. J. Norman.”³

¹ According to his WWI Discharge Papers

² <http://skyways.lib.ks.us/genweb/archives/1912/s/stilwell.html>

³ *The History of Johnson County* by Ed Blair, 1915 <http://www.kancoll.org/books/blair/blchapter12.htm>

Marriage and Children

Around 1914, when Frank was 21, he married [Zella Florence Cox](#), age 31, an artist from Streator, LaSalle County, Illinois.⁴ At least the assumption is they married prior to daughter Jacquelyn's birth; but no record has been found in Illinois or Kansas--either at the state or county level (La Salle and Livingston in Illinois, Johnson and Franklin in Kansas). Zella was the daughter of the painter and theater architect, [Frank Cox](#) and Clara Atkins.

How did an artist from Streator, Illinois manage to meet and marry a blue-collar worker from Aubry, Kansas? Consider the following: Zella had an aunt living in Williamsburg, Franklin County, Kansas which is about 60 miles southwest of Aubry. Her husband was the brother of Clara's (Zella's Mom) second husband, so it could be assumed that she might be a favorite aunt of Zella and that Zella would visit her aunt and her cousins in Williamsburg. Frank was in the oil business, and oil was discovered in Franklin County in the early 1900's so it is possible that he was in or around Williamsburg at the same time Zella was there.



1902 - Zella Cox with her father



1912 - Williams Hardware Company in Streator

In any case, their eldest daughter, Jacqueline, was born on 08 May 1915 in Streator. The 1916 Streator City Directory (data gathered in 1915) found Frank living with Zella at 211 No. 2nd St. in Streator, which was just a few doors away from Zella's mother, Clara Atkins Cox Peddicord, who lived at 204 No. 2nd St. Frank was working at the Williams Hardware Co. in Streator.

Frank and Zella were living in El Dorado, Butler County, Kansas when their second and final child, a daughter named Gwendolyn Florence, was born, was born on 31 October 1916.

Frank registered for the WWI Draft on 5 June 1917 at age 24 in El Dorado. His registration form shows that he was married with a wife and two children living at 514 Washington, El Dorado (see map and photo on next page). He was working as a tool dresser for Crow & Sullivan in the oil industry. The tool dresser was the driller's assistant at an oil well, responsible for sharpening or dressing the drill bit.⁵

El Dorado was also known as "Oil Dorado."⁶ The photo on the title page of this document shows the nearby oil fields. In one year, the Butler Oil Field alone produced 29 million barrels of oil, or 9% of the total US output.

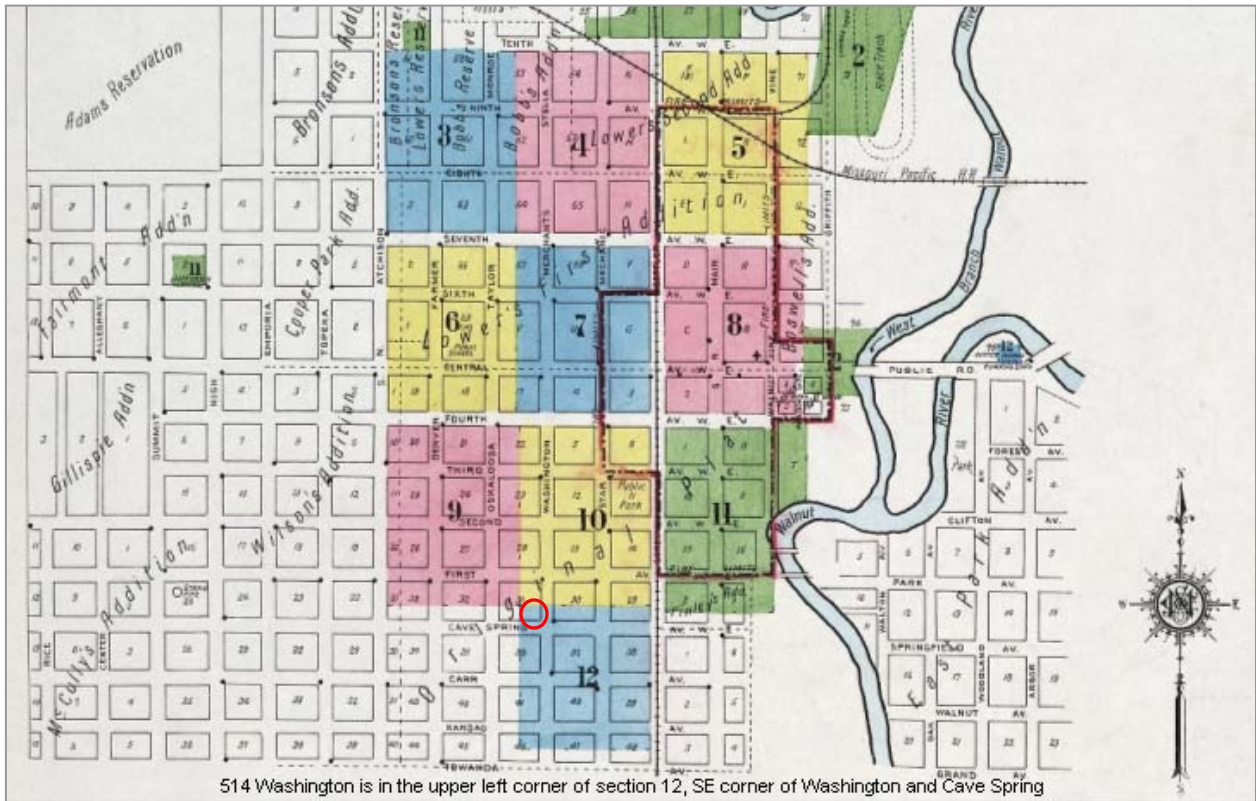
⁴ Biography of Zella Cox Tull Karet

⁵ Lube Lingo at <http://www.oil150.com/about-oil/oil-gas-dictionary> provides an intriguing list of oil driller's language.

⁶ *Oil Dorado: The Life and Times of an Oil Boom*, a documentary by PBS station KTPS <http://watch.kpts.org/video/1359723060>



514 [S.] Washington, El Dorado, Kansas



514 Washington is in the upper left corner of section 12, SE corner of Washington and Cave Spring

World War I

When Frank was inducted into the US Army on 26 July 1918 he was age 25 and working in Okmulgee, Okmulgee County, Oklahoma, as an oil driller. The driller was the most important job on a drill site. He had to recognize what was going on thousands of feet below by the sound and the feel of the cable, along with overseeing, or even doing, all of the other tasks involved in drilling for oil. From October to December 1919 oil production in Okmulgee County was 45,000 barrels a day.



Oil fields near Okmulgee, Oklahoma

At this time, Zella and their daughters were living in Streator, Illinois, probably with her mother. It's not known whether Zella moved before or after Frank went into the Service.

In WWI, Frank was a member of the Allied Expeditionary Forces from 21 September 1918 to 22 June 1919 and fought in the Meuse-Argonne Offensive. On 14 January 1919 he was attached to the 159th Ambulance Company and participated in the evacuation of the sick and wounded to home after the Armistice. On 04 July 1919 he was assigned to the Casual Detachment Demob Group at Camp Pike in Little Rock, Arkansas where he received an honorable discharge with the rank of Private 10 July 1919. For more details, please see the companion document [Frank Tull Military Service](#).

On the Way to California

Apparently Frank and Zella never got together again. The 1920 Amarillo, Randall County, Texas City Directory (data gathered in 1919) shows Frank, age 27, living at 402 N Lincoln and working as an oil driller. Zella was living in Streator.

The 1924 Roswell, Chaves County, New Mexico City Directory (data collected in 1923) shows him living in Roswell and married to Blanche (last name unknown), so sometime around 1921 or 1922 Frank and Zella were divorced.

Life in California

Even though Zella and their family had also moved to California ~1920, Frank apparently had little or no contact with his daughters because there is no mention of him in the Covina newspapers for that timeframe whereas their maternal grandfather, Frank Cox, is mentioned several times in conjunction with Gwendolyn and Jacquelyn. However, there must have been some connection because later in life Gwen mentioned to her son that Frank had worked a long time at Signal Oil.

The exact date of his arrival in California is unknown. The earliest listing for him is in the Long Beach, Los Angeles County, City Directory for 1928. Since this data was gathered in 1927, he would have been about 34. He was living at 403 E. 4th St. and his occupation was operator.

At the time of the 1930 Census on 7 April, Frank was a boarder in a house on Sky Line Boulevard in Lemoore, Kings County, California, no house number given. He was a rotary helper on an oil well.

On 10 May 1931, at age 38, he married for the third time, to Daisy White. They were married by Hugh J. Walker, a Presbyterian Minister, and the witness was Clara Williams of Los Angeles.

Frank was living at 31 Horizon Ave. in Venice, Los Angeles County and his occupation was engineer making gasoline.

According to various city directories and the 1940 Census, Frank and Daisy moved several times during the 10 years they were married. (The years listed below are one less than the corresponding city directory because data was collected the year before the publication year.)

- 1932—age 39; lived at 2107 Marine, Santa Monica, Los Angeles County; occupation Sub Station Operator
- 1933—age 40; lived at 512 Central, Seal Beach, Orange County; occupation Gas Operator
- 1935—age 42; lived at 1600 State Highway, Seal Beach, Orange County, California; occupation "Gas Plant Operator"
- 1937—age 44; lived at 1601 State Highway B96 Seal Beach, Orange County; occupation gas plant operator
- 1939—age 45; lived at 848 E. 73rd St., Hynes (now Paramount), Los Angeles, California; occupation oilworker
- 1 April 1940—age 46; lived at 848 73rd St., Downey, Los Angeles, California; occupation pumper in the oil industry; they owned their home, which was valued at \$1,550 (\$25,500 in 2013 dollars)

Frank and Daisy divorced ~1941. The exact date is unknown, but in the 1940 Compton City Directory (data collected in 1939) he is living with wife Daisy, and by the time of his WWII "Old Man's" Draft Registration in 1942 in Long Beach, Viola *Hall* Ransdell was listed as his wife. And in 1941, age 47, he was listed as living at 1054 Lime Ave in Long Beach rather than the house in Downey; occupation oilworker, which is consistent with being divorced.

Frank and Viola also moved several times, but all but one address was in Long Beach:

- 27 April 1942—age 48; lived at 189 Barclay St. in Long Beach with wife Viola; was working for the Signal Oil & Gas Co. at 2780 Junipero in Long Beach
- 26 January 1943—age 49; lived at 115 Ferguson Ave. in Oildale, Kern County, California (this may have been a temporary work address)
- 1943—age 50; lived 6665 Long Beach Blvd. in Long Beach; occupation oilwork
- 1944-1945—age 52; lived with Viola at 1017 Lime Ave in Long Beach in 1944 to early 1945; then 2829 Spaulding St. The locations are interpolated from a 19 Jun 1945 newspaper article about Violet's son being wounded in WWII and the address she was living at the time plus the CA Voter Registration Index.
- 1944—age 51; lived in Long Beach; occupation shipyard worker
- 1946—age 53; lived with Viola at 2829 Spaulding St. in Long Beach; occupations were not included in the voter registration that year



Life after California

Frank is in the 1946 California Voter Registration List, but not 1948. Viola is in the 1948 list twice—once at Frank's 1946 address and also living with her son and using the name Ransdell, which was her previous husband's name. Did Frank die 1946-1948 or were they divorced ~1947 and he moved out of state?

His death date and location are unknown except that he was probably deceased by 23 January 1958 because he was not listed as a survivor in his mother's obituary. There is no record of his death in California and Frank did not have a Social Security Number, so he cannot be traced through the Social Security Death Index. All that is known for sure is that he died before his 65th birthday.

Frank Tull Genealogy

Ancestry

As mentioned above, Frank was the second of six children, and the first of four sons, born to George F. Tull (1864–1931) and Nancy Davis (Daisie) Lewis (1866–1958).

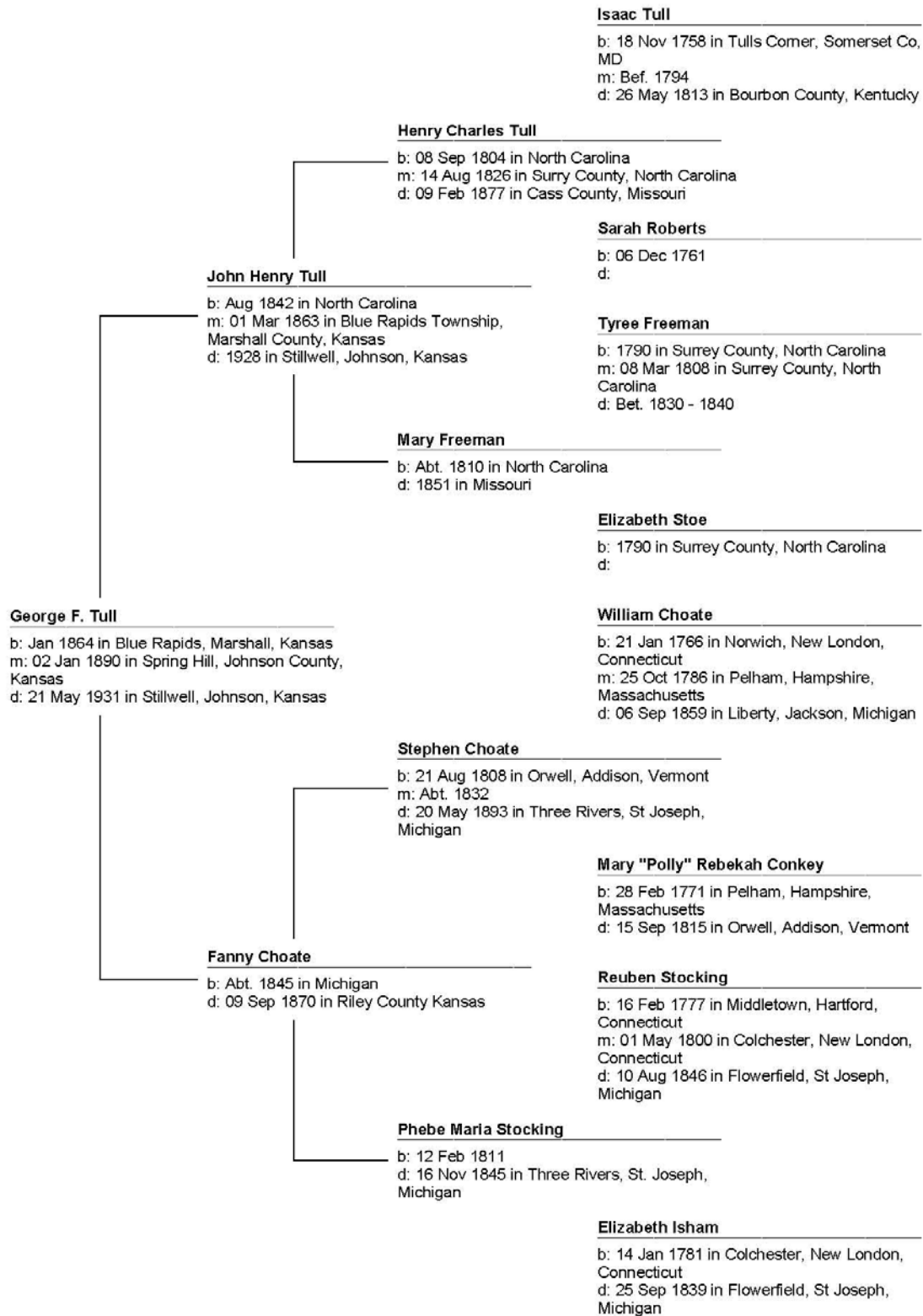
His paternal grandparents were John Henry Tull (1842–1928) and Fanny Choate (1845–1870). Frank's ancestry can be traced back to Colonial Maryland, Connecticut, and North Carolina and then to England and Ireland (County Galway) on his father's side.

His maternal grandparents were James Simeon Lewis (1836–1914) and Frances Ellen Judy (1838–1902). On his mother's side, his ancestors go back to Colonial Maryland, Virginia, and Kentucky and then to England.

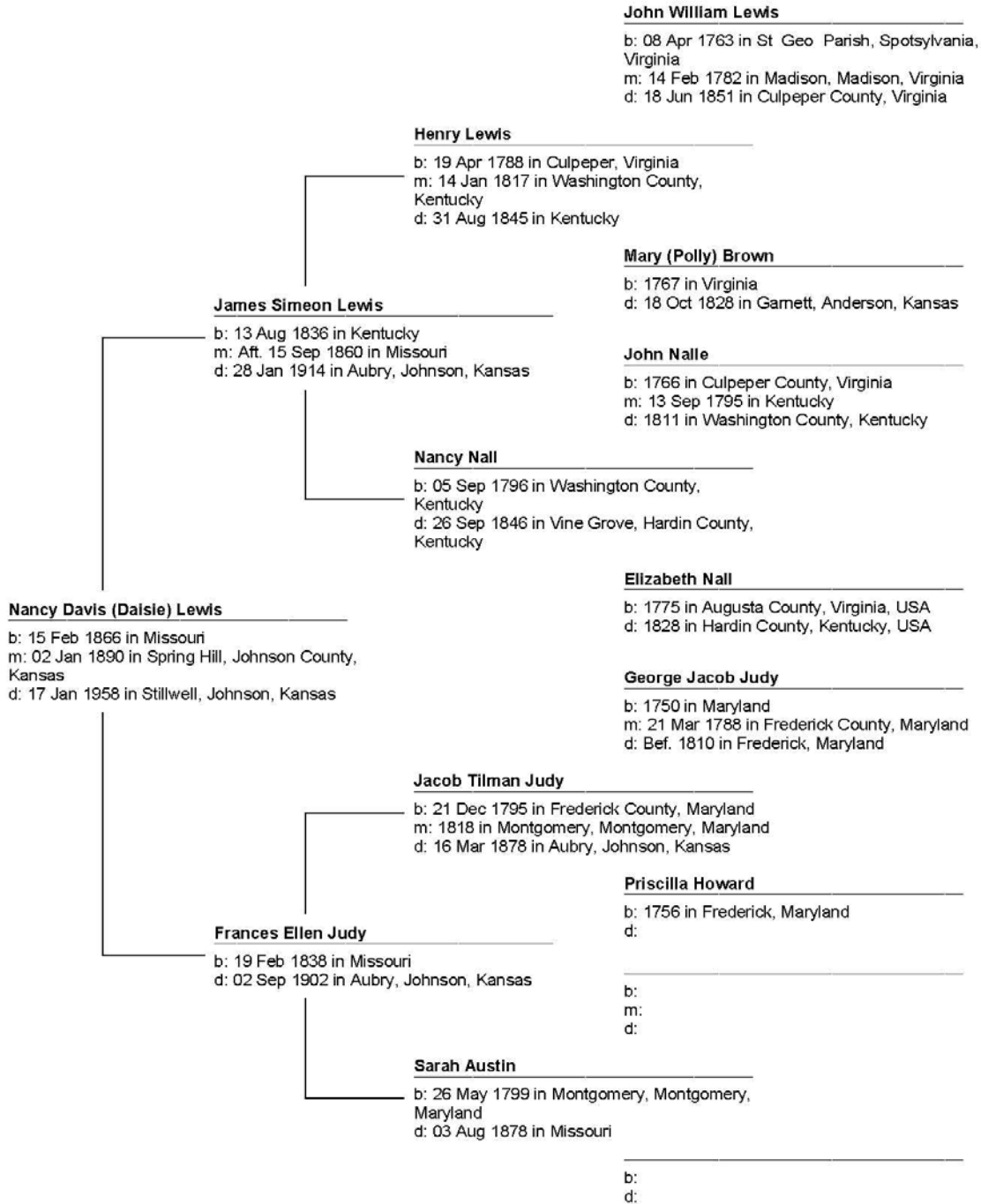
Frank's ancestors fought in the American Revolution and the Civil War.

The next two pages provide ancestry charts for Frank's parents.

George F. Tull Ancestry

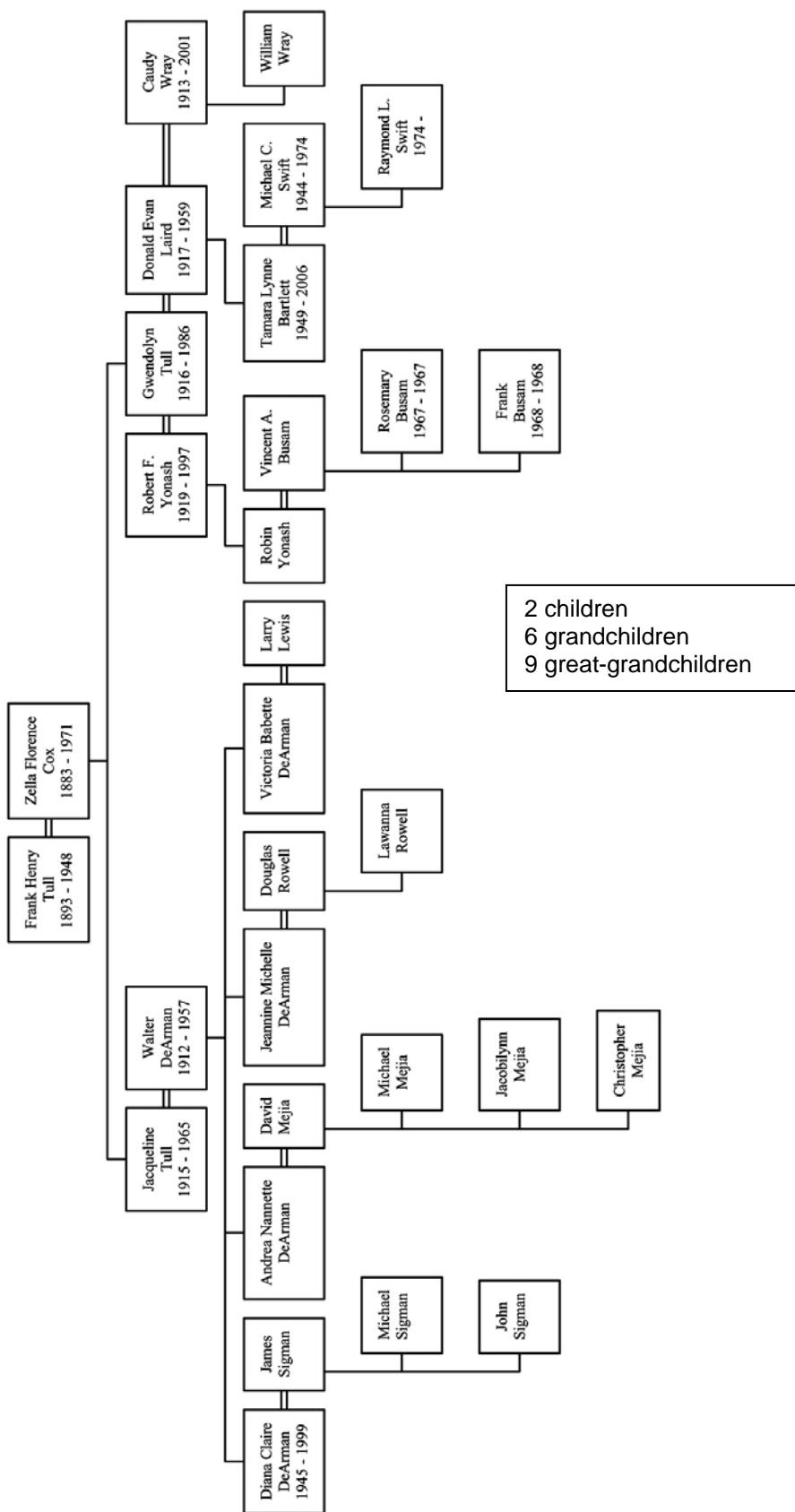


Nancy Davis (Daisie) Lewis Ancestry



Descendants

Descendants of Frank Henry Tull



Map of Frank's Locations

This is a map of the known locations where Frank Tull lived and/or worked (except for his tour of duty in France during World War I). For names of the locations, view the full map at <https://maps.google.com/?mid=1362957539>

