

SOUTH FLORIDA PIONEERS



JANUARY 1976

ISSUE #7

Lillian Gayle

SOUTH FLORIDA PIONEERS

Printed Quarterly: Jan., Apr., July & Oct.

\$6.00 Annual Subscription

Editor: Richard M. Livingston

P. O. Box 166

Fort Ogden, Fla. 33842

CONTENTS

ISSUE #7

JAN. 1976

CHARLOTTE COUNTY: Charlotte Harbor Cemetery 1
 Early History of the Lower Kissimmee River Valley 3
 MANATEE COUNTY: Early Marriages, 1880-1882 6
 South Florida Baptist Association Minutes, 1869 8
 HILLSBOROUGH COUNTY: 1860 Federal Census 9
 Queries 11
 William Hutto Durrance, 1815-1879 13
 ORANGE COUNTY: 1850 Slave Owners 15
 POLK COUNTY: History of Courthouses 15
 HARDEE COUNTY: New Zion Baptist Church Cemetery 17
 HILLSBOROUGH COUNTY: Early Marks & Brands, 1850-1852 20
 Florida Men Who Served in Union Forces During Civil War . . 24
 Cason Family Bible Record 26
 Thomas H. Albritton, 1818-1907 27
 DE SOTO COUNTY: History of Fort Winder 32
 Frederick S. Lanier, 1829-1875 33
 LEE COUNTY: Early Marriages 35
 Family Publications 37
 Index 38

The Fort Ogden Civic Club in conjunction with the Florida Department of State is sponsoring the erection of a historical marker in front of the new Fort Ogden post office as part of their Bicentennial Project. The marker is to commemorate the establishment of a military camp, Camp Ogden, in 1841 during the Second Seminole Indian War and the 100th anniversary of the Fort Ogden post office. The dedication is set for Sunday, May 2, 1976 in conjunction with the annual May Day Picnic.

All subscribers should send in their queries to be printed in the next issue of SOUTH FLORIDA PIONEERS. Many individuals have received some good help from their queries.

Tell a friend about SOUTH FLORIDA PIONEERS. Thank you!!!!

CHARLOTTE COUNTY: CHARLOTTE HARBOR CEMETERY

This cemetery was copied by Stanley & Doris Nicholson of Arcadia, Florida in October of 1974 and is continued from Issue #6.

William R. Roberts 1875 - 1947
 Maria L. Roberts 1884 - 1939
 Our baby Roberts
 James S. Roberts 1838 - 1922
 Charles L. Roberts 1866 - 1917
 Linton S. Roberts 1884 - 1931
 Mitchell Sherrod Roberts 1872 - 1942
 Mary Frances Hancock Roberts, wife of Mitchell Sherrod Roberts
 Born in Old Miakki 1872, Died in Punta Gorda 1949
 James Milton Roberts, Born in Punta Gorda 1904, Died in New
 York City 1960
 Howard Douglas Anderson Sept. 19, 1947 - Dec. 27, 1967
 Fla, WO-TRP, D 4 CAV, 25 INF DIV, Vietnam BSM, AM&6 OLC PH
 Edith Ramsey, wife of William S. Hancock, Born Brookville, Fla.
 1913, Died Punta Gorda 1965
 Ruth R. Clark 1900 - 1972
 Robert James Waterson April 4, 1859 - July 7, 1908
 Joseph C. Galloway Christian Naturalists
 Hannah M. Galloway
 Hugh L. Spriggs 1899 - 1971
 Horace T. Wade 1870 - 1959
 Clyde H. Wade 1903 - 1940
 Carol Mae Wade 1883 - 1940
 Woodrow Wilson Wade Nov. 17, 1912 - May 1, 1957
 Fla, Sgt, 567 Air Service GP, AAF, WWII
 Ollie Holloway 1882 - 1952
 Joan Towler 1937 - 1938 Age 5 months
 Lola Roberts
 Thomas Roberts
 Harriet Roberts
 Thomas C. Roberts, Sr. Nov. 7, 1890 - Sept. 28, 1958
 Fla, PFC, 7 AMB CO, 3 Division, WWI
 Richard B. McHargue 1866 - 1932
 Josephine M. McHargue 1876 - 1962
 Emily C. Wilson Oct. 10, 1896 - June 6, 1918
 Nathan H. DeCoster 1837 - 1912
 Emily M. DeCoster 1845 - 1922
 Alice C. Coram Feb. 15, 1877 - Dec. 9, 1949
 Henry Buchans 1875 - 1912
 Clyde Odum 1887 -
 Lila Hall Odum 1902 - 1972
 Morris E. Odum Feb. 25, 1934 - Jan. 20, 1935
 Cyrus F. Cartwright 1891 - 1971
 Fern L. Cartwright 1894 -
 Frederick S. Addy April 12, 1916 - April 25, 1972
 Georgia, LCDR, U.S.Navy, WWII, Korea
 Mary Ellen Knight 1906 - 1974
 Hannah Margaret, dau. of George & Margaret Knight
 Aug. 20, 1932 - March 16, 1940
 George E. Knight Sept. 19, 1869 - July 21, 1907
 George E. Knight Nov. 13, 1893 - Jan. 18, 1950
 Elizabeth Standford, Born in Tenn. Dec. 10, 1809, Died in
 Manatee Co., Fla. May 24, 1886

Marion Bruce Knight March 29, 1871 - April 2, 1947
 Helen Knight Hamilton Jan. 21, 1886 - Jan. 13, 1958
 M. R. Stroud 1894 - 1961
 Sacred to the memory of Joel Knight Feb. 24, 1822 - Sept. 18,
 1879 (Joel Knight was the son of Samuel Knight and Mary
 Roberts)
 Mrs. Virginia (Mitchell) Knight June 11, 1829 - Sept. 3, 1902
 Thomas S. Knight Jan. 21, 1849 - April 22, 1911
 Sarah Ellen (Wilder) Knight 1849 - 1919
 T. S. Knight, Jr. Dec. 17, 1873 - Dec. 2, 1939
 Mary Taylor Knight Born in Waverly, Mo. Dec. 30, 1876
 Died Feb. 9, 1964
 Thomas S. Knight III Jan. 17, 1902 - May 15, 1970
 Fla, Pvt, U.S. Army, WWII
 Nellie Vickers 1894 - 1965
 Wesley Vickers, Jr. Aug. 26, 1928 - Oct. 21, 1944
 Leora Baker Nov. 22, 1884 - Feb. 2, 1974
 Austin A. Miller 1896 -
 Olga M. Miller 1896 - 1974
 John Proctor Lee Feb. 5, 1900 - Jan. 15, 1974
 Illinois, Pvt, U.S. Army, WWI
 Mary E. Buntain Sept. 20, 1891 - April 2, 1972
 A. Kenneth Cleveland 1922 - 1974
 Bonita F. Bennett 1879 - 1942
 Joel W. Bennett 1860 - 1947
 Mott A. Willis, Sr. 1868 - 1944
 Maggie D. Willis 1877 - 1947
 Harry K. Willis 1906 - 1964
 Jean B. Willis March 2, 1937 - Aug. 10, 1972
 Vona Frizell Hindman April 3, 1895 - Mar. 30, 1960
 Roy S. Frizell Aug. 17, 1907 - Aug. 29, 1958
 Joe J. Frizell April 16, 1866 - Oct. 20, 1926
 Blanche H. Frizell Nov. 4, 1870 - Nov. 1, 1948
 Dorothy F. Frizell Jan. 31, 1919 - April 13, 1973
 Arthur C. Frizell June 19, 1890 - Jan. 6, 1961
 James E. Stroud June 10, 1959 - June 13, 1959
 Marion McLeod Giddens May 4, 1877 - June 7, 1950
 Summer Edmondson Giddens Born Dec. 12, 1872 Knights, Fla.
 Died June 2, 1944 Charlotte Harbor, Fla.
 M. Viola K. Mahaffey Nov. 3, 1899 - Aug. 24, 1960
 William E. Mahaffey Aug. 8, 1907 - Jan. 4, 1965
 John H. Nelson 1872 - 1956
 Cordelia J. Nelson 1879 - 1974
 Josephine Nelson 1891 - 1974
 Henrietta Nelson May 4, 1912 - Oct. 23, 1914
 Narvis Nelson July 3, 1928 - July 4, 1929
 Eunice E. Hays 1917 - 1972
 Willa Barnes 1931 - 1932
 Abbie Parkinson 1833 - 1911
 Baby Parkinson March 5, 1906
 Charles Cochran 1880 - 1972
 Moselle W. Addison Jan. 3, 1908 - Dec. 22, 1972
 Joel G. Addison Sept. 26, 1906
 Ella Lee Addison July 29, 1887 - Oct. 31, 1969
 John G. Cothran 1834 - 1930
 Aurelia M. Cothran 1854 - 1943
 Ada A. Cothran Aug. 7, 1890 - Aug. 29, 1891
 Oscar K. Larrison June 20, 1886 - June 12, 1941

Francis M. Larrison Co C, 31 Ind. Inf.
 Mary Larrison Oct. 10, 1850 - Dec. 2, 1916
 Louisa, wife of W. S. Curry July 15, 1823 - Nov. 15, 1883
 Dwight L. Boroughs 1939 - 1972
 Mary Catherine Sias 1833 - 1905
 Corrine S. Griggs 1899 -
 Charlie W. Griggs Nov. 30, 1893 - Nov. 20, 1970
 Fla, Cook, U.S. Army, WWI
 Corine Griggs Mar. 6, 1925 - Feb. 6, 1930
 Edgar Daniel Sias 1869 - 1966
 Ida May Sias 1874 - 1926
 Glenn K. Fitch 1895 - 1974
 Henry DeCoster 1879 - 1951
 George E. DeCoster 1872 - 1941
 Georgia K. DeCoster 1875 - 1950
 Infant son, Reuben Walden Died 1909
 Infant son, Elmo Walden Died 1909
 Mary V. Walden Born Tampa, Fla. May 24, 1905, D. Aug. 3, 1972
 Frank Branch Walden Born Ft. Meade, Fla. Sept. 20, 1902
 Died Sept. 23, 1958
 Samuel L. Roberts 1877 - 1960
 Alta M. Roberts 1883 - 1963
 George E. Saunders June 9, 1928 - July 22, 1948
 Fla, PFC, 442 AFTRP Carrier GP WWII
 Haulie Knight Cook April 10, 1884 - July 2, 1955
 Thomas H. Willis Oct. 9, 1884 - Dec. 30, 1966
 Clarice L. Willis
 Lovina (Messer) Stephens 1861 - 1957 Eastern Star
 Thomas A. Stephens 1857 - 1927 Mason

(TO BE CONTINUED NEXT ISSUE)

////////////////////////////////////

EARLY HISTORY OF THE LOWER KISSIMMEE RIVER VALLEY

Kyle S. VanLandingham, P. O. Box 1779, Ft. Pierce, Fla. 33450 has contributed the following article which he delivered to the Okeechobee County Historical Society at their meeting in July of 1975.

In 1824, the area on the east coast from New Smyrna on the north to Jupiter Inlet on the south was formed into Mosquito Co. The western boundary was on Kissimmee River. The name was changed to Saint Lucie in 1844 and changed once again to Brevard in 1855. This is how it remained until 1887 when the western portion of Brevard became Osceola County, with the county seat at Kissimmee. In 1905, the southern portion of Brevard County became St. Lucie, with Fort Pierce as the county seat. Finally, in 1917, southern Osceola and western St. Lucie counties were formed into a new Okeechobee County.

Life was quite primitive in this area from the 1870's well into the 20th century. In 1875, Brevard County was still without a courthouse, so a referendum was held that year in which a majority of the voters chose to build the courthouse at Lake View, a community at Lake Marian, near present day Kenansville. A log courthouse was constructed there and it remained the county seat until about 1880. The area was also known as Courthouse Pond.

Cattlemen ran their herds on the open range from the St. Johns River on the east, to the Kissimmee River on the west. Among the prominent cattle owners during the 1870's and 1880's were: Moses Barber, Streaty Parker, his sons Readding Parker and Louis Parker, Bill Shiver, Aaron Jernigan, Captain John M. Pearce, Raiford Durrance, William Underhill, Jeremiah Walker, Ab Wright, Rabun Raulerson, Henry L. Parker, Henry Holmes and William Alderman.

During the Reconstruction era, after the Civil War, heavy taxes were often imposed on the cattlemen. In 1870, after the levying of one of these taxes, Moses Barber refused to pay. Judge John Mizell sent his brother Sheriff David Mizell to enforce the order. As the sheriff rode across a ford at Bull Creek, near Lake View, he was shot off his horse and killed. Judge Mizell formed a posse and went after the Barbers. Moses got away, so the posse started chasing his two sons. They killed Isaac Barber at his home in March 1870 and then pursued Mose, Jr., whom they apprehended at Lake Conway, near Orlando. A heavy plowshare was tied around his neck and he was then thrown overboard from a boat. He managed to swim ashore, but the posse opened fire and killed him. These killings are known as the Barber-Mizell feud, which caused quite a lot of bitterness during the pioneer days.

In 1872, Henry L. Parker was appointed County Judge of Brevard County. Henry was a brother of Streaty Parker and had moved to the Kissimmee River valley about 1870. First settling at Bluff Hammock, he moved to Lake View where he lived until about 1883. After the county seat was moved from Lake View to Titusville in 1880, the Lake View settlement began to decline in size. Some people moved to the nearby community of Whittier.

Located near Lake View, between Lake Jackson and Lake Marian, was the Parker Place, home of pioneer cattleman, Readding Parker. He and his brother, Louis, were originally from Bartow. In the early 1870's they began to run cattle in Brevard County, and also supervised their father Streaty Parker's large herds in the same area. Readding Parker rounded up his cattle periodically and drove them to the west coast where they were shipped to Cuba. When Parker returned from Cuba he brought back gold doubloons and legend says he buried some of the gold on his land near the Parker Place.

When Henry L. Parker moved away from Lake View, he settled about 30 miles south near the site of old Fort Drum. The fort had been built and garrisoned by soldiers in 1849. It was deactivated May 28, 1850 but when the Third Seminole War started in 1856, troops were again stationed at Fort Drum, remaining there until about 1861. Henry Parker operated a store and trading post and provided the neighboring cattlemen with much needed store goods. He also traded with the Indians, members of the Cow Creek Seminole tribe. Among the early settlers of Fort Drum were Streaty Hair, Sr., Rev. Joel Swain, John Parker from Georgia, Tip Padgett, Bill Beecher and Henry Holmes.

The old cemetery at Fort Drum is the oldest in Okeechobee Co. The earliest graves date from the mid-1800's.

About 20 miles west of Fort Drum was another early settlement of Okeechobee County, Basinger. The original Fort Basinger was located across the Kissimmee River in Highlands County. Established in 1837 during the Second Seminole War by Col. Zachary Taylor, it was also used again during the last Seminole War in 1856. About 1870, Rabun Raulerson of Polk County brought in his cattle to the Basinger area. He later returned to Bartow, but a number of his children remained in the Kissimmee River valley. Among them were William, David, Noel and Peter.

In 1875, Captain John Pearce settled west of Kissimmee River at Ft. Basinger. There he established his home and after his death his widow built the house which is now occupied by their granddaughter, Mrs. Edna Pearce Lockett. Captain Pearce and his family were very active in the cattle business.

Also in the 1870's, William Alderman of Manatee County began to herd cattle in the Basinger area. He stayed for a short time but moved back to Pine Level, once again returning as a permanent resident in 1888. He established his home at Micco Bluff, on the Kissimmee River, about eight miles north of Basinger.

Another early settler of Basinger was Shadrach Chandler. During the 1880's, Jeremiah Walker and William Underhill also moved into the area. Jeremiah Walker had 12 children, six sons and six daughters. William Underhill had ten children. There was extensive intermarriage among the early families, especially among the Walkers, Underhills, Chandlers and Aldermans.

One day in 1895, young Rabun Raulerson, son of Noel, and grandson of the elder Rabun, was working in the fields and became ill. He died shortly thereafter and was buried at Basinger. His father gave the land around which his son was buried to the community for the purpose of becoming a cemetery. Among the other early graves are those of Edward Campbell who died in 1896, Henry Morgan in 1897, Shadrach Chandler in 1898, India Lesley in 1898 and Jeremiah "Jack" Walker, infant son of James Walker, in 1898. Another early grave is that of Annie (Hilliard) Willingham, widow of William H. Willingham of Fort Meade. While visiting her daughter, Ellen Parker, in Basinger, she died - April 24, 1901.

Among the other early settlers of Bassinger were James Thomas, Eli Morgan, Raiford Durrance, John Lofton, Alfred Campbell and others.

Raising cattle was the occupation of most of the Basinger and Fort Drum pioneers. The area was all open range, but in the late 1880's, a 25 mile barbed wire fence was constructed which divided the Fort Drum-Bassinger range from the Whittier-Lake View grazing area. The Pine Island Cow Pens were located along the fence. It is reported that the fence was cut open on a number of occasions, reducing its effectiveness.

Often cooperative roundups were held by neighboring cattlemen. The cows were marked and branded, then driven to the west coast where they were shipped to Cuba and other ports. Pioneer cattleman Teet Alderman, son of William Alderman, often recalled the many horseback jaunts he would take, often to be gone for several weeks at a time. They were equipped with saddle bags of biscuits and potatoes and other "grub", and wallets of corn for the horses. He also remembered that at one time a crew was building a set of cowpens at Indian Town Hammock, when they killed 37 rattlesnakes during the work period. "All in the day's work".

The Cow Creek Seminole Indians lived in the Kissimmee River valley and travelled throughout the area, often staying on the grounds of isolated ranches. Most notable of the Cow Creeks was Pollie Parker, who took her name from the pioneer Parker family. Pollie, known as the Evangeline of the Seminoles, was captured by troops in 1858 and was on her way to deportation to the west when she escaped along with a number of other Indians. They made their way back to south Florida, where they remained unmolested. Billy Bowlegs III was another member of the Cow Creek Seminole tribe.

Today, Fort Drum and Basinger are small communities, far away from the bustle of urban Florida. Here, the same pioneer families still raise cattle on their ranches just as their ancestors did a century ago.

MANATEE COUNTY: EARLY MARRIAGE RECORDS

Deed Book "c" continued:

GROOM	BRIDE	DATE	MARRIED BY
Morgan Nelson	Frances Youmans	15 Oct. 1880	F.C.M.Boggess
John H. Worth	Miss Senia Sparkman	7 Oct. 1880	W.P.McEwen, MG
Wm. E. Norris	Hester Viola Hampton	21 Oct. 1880	I.A.Redd, MG
Gabriel H. Gill	Georgia Hendry	4 Nov. 1880	W.P.McEwen, MG
A. M. McLeod	Missourie Arnold	7 Oct. 1880	W.F.Norris, MG
Jesse Lee	Mrs. Martha Walker	9 Nov. 1880	Jesse B. Mizell, JP
Henry A. Clark	Fannie E. Wyatt	3 May 1881	James O. Branch, MG
N. E. Keen	Sarah Jane Keen	28 Nov. 1880	F.C.M.Boggess
Daniel L. Coker	Sarah E. Albritton	24 Dec. 1881	D.J.W.Boney, JP
Isham Simmons	Polly Weeks	8 Jan. 1881	H.G.Barnhill, JP
Samuel E. Collins	Miss Lucy Crews	1 Mar. 1881	D.J.W.Boney, JP
Aloneya W. Petars	Elmunce E. Rogers ✓	27 Jan. 1881	E.Chancey, MG
T. Jacob Chancey	Laura Ann Thompson	27 Oct. 1880	E.Chancey, MG
Benjamin F. Clark	Mary S. Rogers ✓	27 Jan. 1881	E.Chancey, MG
Charles M. Johnson	Miss Margaret C. Mizell	12 Jan. 1881	E.J.Hull, MG
Jesse Williams	Miss Missourie D. Nelson	10 Mar. 1881	E.Lee, VDM
Gra Gordell Lopez	Penelope Daniels	10 Apr. 1881	H.G.Barnhill, JP
Mathew Powers	Elizabeth Rowe	6 Apr. 1881	W.F.Norris, MG
Joshua A. Platt	Miss Eliz Thigpen	17 Apr. 1881	E.J.Hull, MG
Thomas L. Bates	Miss Athalia E. Tippett	24 Feb. 1881	S.Handcock
John Brown	Marie D. Lennard	8 May 1881	Edmund Lee
Johnson Helm	Miss Fannie Younglove	24 Apr. 1881	F.R.Bridges, MG
Arthur R. Ange	Caroline V. Tucker	5 May 1881	F.R.Bridges, MG
Luther A. Azelin	Clara P. Saunders	22 May 1881	F.R.Bridges, MG
Edward Bell	Miss Anne E. Draper	26 Mar. 1881	E.Glazier
W. Bryant Collier	Jane E. Whidden	12 May 1881	D.D.Crews, Jr. JP
George L. Roberts	Ocean Hansen	29 May 1881	W.F.Bronson, JP
Clayton D. Garred	Miss Lizzie B. Stephens	29 May 1881	F.C.M.Boggess, NP
Daniel L. Hawkins	Henrietta Harris	24 June 1881	I.A.Redd, MG
Thomas C. Boggess	Miss M. O. Key	22 June 1881	F.C.M.Boggess, NP
Theodore W. Redd	Miss Addie Garner	9 Nov. 1881	W.F.Bronson, JP
J. W. Galispie	Miss Victoria Addison	4 Oct. 1881	D.J.W.Boney, JP

Walter S. Barley	Miss Mertis Key	6 Nov. 1881	F.C.M.Boggess, NP
Benjamin F. Harp	Seraph Z. Snodgrass	25 July 1881	E.Glazier, MG
Robt. C. Stewart	Lula F. Snodgrass	25 July 1881	E.Glazier, MG
H. M. Foy	Miss Allice Smith	24 July 1881	F.R.Bridges, MG
Wm. H. Bishop	Laura E. Craig	24 Jan. 1882	G.Patten, JP
Jesse D. Johnson	Miss Martha J. Brown	8 Sept 1881	I.A.Redd, MG
Samuel Booker	Nancy M. Vanderipe	8 Sept 1881	E.F.Gates, MG
John E. North	Miss Susan F. Collins	8 Sept 1881	D.D.Crews, JP
J. B. Williams	Miss Georgia Stephens	1 Sept 1881	F.C.M.Boggess, NP
Wm. H. Simmons	Mary Priscilla Langford	28 Sep. 1881	E.J.Hull, MG
Wm. Henry Hooker	Mahala C. Langford	28 Sep 1881	E.J.Hull, MG
Thomas H. Albritton	Mrs. Cordelia Hutchison	9 Oct. 1881	A.Kicklighter, MG
John Cross	Miss Margaret Jane Harman	21 Oct. 1881	F.C.M.Boggess, NP
Wm. McClelland	Miss Sophronia Powers	13 Oct. 1881	D.J.W.Boney, JP
R. A. Jacobs	Sarah Margaret Arnold	1 Nov. 1881	D.J.W.Boney, JP
Thomas F. Wingate	Georgia Ann Smith	2 Nov. 1881	D.J.W.Boney, JP
Edwin C. Ayers	Mary T. Mann	21 Nov. 1881	E.Lee, VDM
Edward F. Bostick	Mrs. Amanda L. Strickland	8 Dec. 1881	J.M.Hendry, MG
Joseph Texas Keen	Miss Sarah Elizabeth Moody	8 Sept 1881	E.Chancey, MG
James A. Carton (Carlton ??)	Miss Florida L. Wilkerson	11 Dec. 1881	J.W.Carlton, MG
Thomas Edward Durrance	Mrs. Martha Ann Hale	22 Dec. 1881	Hugh Bethea
Deed Book "D"			
James Daniel Taylor	Miss Susan J. Wilkins	9 Feb. 1882	E.Chancey, MG
Moses Keen ✓	Lucy C. Hand	9 Feb. 1882	E.Chancey, MG
John Sauls	Precilla Alderman	12 Feb. 1882	W.F.Norris, MG
Perry Ballard	Mrs. Lucretia A. Tillet	4 Feb. 1882	S.Handcock, MG
Wm. F. B. Whidden	Louisa Whidden	11 Mar. 1882	H.H.Norris, JP
B. C. Graham	Sallie Gates	2 Mar. 1882	A.A.Robinson, MG
Benj Franklin Stephens	Miss Mary Jane Grayson	20 Feb. 1882	F.R.Bridges, MG
Needham Smith	Mary Smith	22 Jan. 1882	F.C.M.Boggess, NP
Charles Lataim	Mary Washington	15 Mar. 1882	F.R.Bridges, MG
Wm. R. Whitaker	Amelia Y. Sawyer	12 Apr. 1882	G.H.Wyatt

Caswell Cadington Cristopher Columbus Channcey was married to Margaret E. Hall on 20 April 1882 by Edmund Chancey, MG.

Robert Lee	Marcia Bains	11 May	1882	G.H.Wyatt
George Wood	Miss Sarah Hunter	18 May	1882	D.J.W.Boney,JP
Joseph H. Jones	Sarah E. Grise	21 May	1882	D.J.W.Boney,JP
Frederic Hansen	Miss Naomi E. Thompson	28 June	1882	F.C.M.Boguess,JP
Henry B. Curry	Lula S. Lamb	29 June	1882	F.R.Bridges,MG
F. H. Tucker	Eunice Coker	19 Jan.	1882	I.A.Redd,MG
Andrew L. Wood	Rebecca Prescott	24 June	1882	D.D.Crews,Jr. JP
Marion Whidden	Sarah Jane Williams	24 July	1882	D.D.Crews,Jr. JP
J. Newmann Smith	Mrs. M. A. Leslie	3 Sept	1882	E.F.Gates,MG
Frank J. Wiley	Kelly M. Sikes	25 Oct.	1882	E.F.Gates,MG
David H. Alderman	Florida T. Gilley	5 Nov.	1882	Wm.T.Parrish,JP
William Alderman	Miss Mary Thomas	11 Sept	1882	Z.T.Crawford,JP

////////////////////////////////////

EARLY CHURCH RECORDS:
SOUTH FLORIDA BAPTIST ASSOCIATION MINUTES

Minutes of the third annual session of the South Florida Baptist Association, held with Shiloh Church, Hillsborough County, commencing on Sat., 20th October, A.D. 1869.

Introductory being preached by Eld. J. M. HAYMAN. Letters from the Churches were then called for and read; after which, petitionary letters being called for, the following were received, viz:--New Hope, Manatee Co.; Orange Grove, Orange County; Midway, Hillsborough County; Alafia, Hillsborough County; which, being found orthodox in their faith and practice, the right hand of fellowship was extended to their delegates. Also the Church at Lake Harris, Sumter County, made application for a letter of dismissal, which, being granted, a letter was prepared and handed over to its delegates. On balloting for regular officers Eld. S. WALDRON was elected Moderator and E. J. HULL, Clerk. Brethren T. W. WILDER, ALDERMAN CASEY and TURNER were appointed a committee to arrange preaching during this session; Brethren PYLANT, HARRELL and JONES a committee on finance; Elders W. B. MILLER, G. C. POWELL and JOHN FUTCH a committee to arrange business for this body; Elders J. W. HENDRY, PYLANT and JONES a committee on queries, also on examination of letters; Elders G. C. POWELL, A. WILSON, and R. N. PYLANT committee on publication.

Whereas, our country is now rapidly filling up by immigration, and no doubt among that teeming immigration will be found some calling themselves "Baptist Preachers". Now, whilst we would rejoice at the reception of true and faithful ministering brethren among us, we are admonished by the history of the past to be cautious of "wolves in sheep's clothing", therefore, Resolved, that our Ministers and Churches be admonished not to receive any as Baptist Ministers unless they produce their credentials and letters of regular dismissal from their respective Churches, or give satisfactory reasons for not doing so.

Ministers of the South Florida Baptist Association, with the Post Office address:

WALDRON, S.,Mod.	Cork	*HULL, E.J.,Clerk	Alafia
CRAFT, SAM. C.	Tampa	CROSS, S.L.	Alafia
*FUTCH, JOHN	Cork	HENDRY, J.W.	Alafia
*HARRELL, G.B.	Manatee	MILLER, W.B.	Alafia
*PYLANT, R.N.	Bartow	STANFORD, DANIEL	Bartow
WILSON, A.	Cork	HUMPHRIES, J.T.	Tampa
POWELL, G.G.	Orlando	SIMMONS, L.P.	Tampa
HAYMAN, J.M.	Bartow		

*Licentiates

CHURCHES & STATISTICS

<u>CHURCHES</u>	<u>COUNTY</u>	<u>PASTORS</u>	<u>DELEGATES</u>	<u>TOTAL MEMBERS</u>
Alafia	Hills.	W.B.MILLER	J.W.RIGGS	6
Beulah	Polk	S.WALDRON	MILLER & HULL	17
Benevolence	Manatee	J.W.HENDRY	HARRELL & ANDREWS	19
Pine Pleasant	Hills.	J.W.HENDRY	JONES & BOYD	29
Peace Creek	Polk	J.M.HAYMAN	PYLANT & BLOUNT	73
Midway	Hernando	H.McGLOWN	JORDAN & WILSON	15
Mount Olive	Polk	J.FUTCH	WILDER & COLLINS	20
Tenotasassa	Hills.	S.WALDRON	WILDER & CASEY	48
Mount Pleasant	Manatee	J.W.HENDRY	MESSER & GARNER	35
Salem	Polk	J.FUTCH	TANNER & McLELLAN	40
Bethel	Polk	S.WALDRON	WILSON & FUTCH	51
Orange Grove	Orange	G.C.POWELL	POWELL	12
Midway	Hills.	C.S.REYNOLDS	CAMPBELL & TAYLOR	18
New Hope	Manatee	S.L.CROSS	BONEY & CREWS	34
Maple Branch	Manatee	J.W.HENDRY	HENDRY & ALDERMAN	-
Shiloh	Hills.	S.WALDRON	WALDRON & TURNER	-
Tampa	Hills.	S.C.CRAFT	Not represented	-

Original minutes are on file at the Baptist Historical Society at Stetson University, DeLand, Florida.

////////////////////////////////////

HILLSBOROUGH COUNTY: 1860 FEDERAL CENSUS

332/269	R.V. Bufforn	58	Va.	Silas Carter	8	Fla.
	Refina " ??	48	Ga.	John "	6	"
	Samantha "	19	Fla.	Mary "	4	"
	Adaline "	11	"	James "	3	"
	A. J. " (m)	8	"	Martha "	9/12	"
	Nancy "	1	"	J.G. Raglin	60	Va.
Page 39: 28th June 1860				336/273 A.W. Wiggins	39	Tenn.
				Safon " (f)	25	"
333-270	Jonathan Pierce	50	Ga.	George "	5	"
	Mary "	47	"	337/274 Enoc Johnston	35	NC
	Sarah "	19	Fla.	Lucinda "	30	Ala.
	Nancy "	17	"	Sarah "	17	Ga.
	Mary "	10	"	John "	6	Fla.
	Cornelia "	8	"	Ephraim "	2	"
334/271	Adison Mansel	24	SC	Enock "	2/12	"
	Augusta "	17	Ga.	H. Cathren	25	SC
335/272	Isaac J. Carter	46	Ga.	338/275 E.B. Sparkman	40	Fla.
	Sarah "	32	Fla.	Elisabeth "	25	"
	Jesse "	12	"	Julia "	17	"
	William "	10	"	Simon "	9	"

Henry Sparkman 5 Fla.
 Bossom " (m) 4 "
 Cornelia Tippins 24 "
 (Serving)
 Westley Jordon 25 Ala.
 (Methodist Preacher)
 Susan Jordon 22 Ga.
 339 Unoccupied
 340/276 Daniel Stanford 55 Ga.
 Mary Ann " 53 "

Page 40: 29th June 1860

341/277 John Ghallager 34 Ire.
 Nancy " 36 Ga.
 Mary " 13 Fla.
 Margaret " 10 "
 Hue " 8 "
 Sarah " 7 "
 S.S. Prevatt 50 Ga.
 (house carpenter)

342/278 Columbus Stafford 27 Fla.
 Elisabeth " 20 Ga.
 James " 12 Miss
 Lafayett " 2 Fla.

343/279 Frank Mathis 47 Ga.
 Fannie " 41 Fla.
 Henry " 20 "
 Mary " 18 "
 Elisa " 8 "
 John " 6 "
 Eloner " 3 "
 William Mathis 22 "

344/280 Edmund Jones 34 Tenn
 Virginia " 31 Ga.
 Thomas " 12 Miss
 James " 10 "
 Daniel " 7 "
 Mary " 4 Fla.
 Fanny " 2 "
 Elizabeth Deshong 21 Ga.
 (serving)

345/281 A.G. LaTaste 42 NC
 (clerk)

346/282 Mary LaTaste 31 SC
 James Gaskins 60 SC
 James " 17 "
 Jacob " 15 "
 Martha " 13 Fla.
 Sarah " 11 "
 Tebitha " 10 "
 Jefferson " 8 "
 Bilison " (f) 5 "
 Winaford " 3 "
 Delila " 3 "

347 Unoccupied

Page 41: 29th June 1860

348/283 Louis Deshong 61 NC
 Rebeca " 32 "
 Evry " (f) 15 Fla.
 Edward " 14 "
 Owen " 11 NC
 Louis " 3 "

349/284 Joseph Robles 39 Spain
 Mary " 34 Ga.
 Michael " 17 Fla.
 John " 15 "
 Joseph " 13 "
 Seaburn " 10 "
 Green " 5 "
 Fransess " 3 "
 Horace " 2/12 "

350/285 Elick Gage 40 Mich
 Viana " 30 Fla.
 Irenah " 9 "
 Soreno " 6 "
 Celia " 5 "
 Owen " 4 "

351/286 John Grice 35 SC
 Anne " 30 Ga.

352/287 Elijas Townsend 56 Ga.
 (age may be 50)
 Jemima Townsend 40 "
 Adolphshus " 16 "
 Ellen " 12 "
 Florida " 10 Fla
 Darmda " (f) 5 "
 Noah " 3 "
 E.L. Townsend 20 Ga.

353/288 James Cooper 39 Ga.
 Elisabeth " 30 "
 Mary " 18 "
 Rebeca " 18 "
 Shoog " 15 Fla.
 James " 10 "
 Eli " 7 "
 Susan " 2 "

354 Unoccupied

Page 42: 30th June 1860

355/287 S.T.A. Branch 44 SC
 Amelia " 35 NC
 Jane " 20 "
 John " 16 Fla
 Thomas " 14 "
 Hester " 12 "
 Calhoun " 9 "
 Barnwell " 6 "
 Mary " 4 "
 Anetta " 2 "
 John Woods 60 NC
 Joseph Thally 25 NC
 (Might be Thosly)

356/288	Henry Hearn	59	Ga.	368/298	Romania Malista	25	Spain
	Anne "	48	"		(day laborer)		
	Florida "	21	Fla.		Julia Malista	26	Fla.
	Henry "	17	"		Franklin "	5	"
	Georgian "	15	"		Laurence "	3	"
	William "	13	"		Joseph "	1/12	"
	Jane "	11	"	369	Unoccupied		
	Youlee "	8	"	370/299	Octavia Papy	40	SC
	Mary "	7	"		(seamstress)		
	Ellen "	5	"		Charles Papy	17	Fla.
357/289	L. J. McLeod	50	NC	371/300	Alice Kelly	26	Fla.
	Marion "	35	Ga.		(seamstress)		
	Julia "	16	"		Mary Kelly	10	Fla.
	Ferdinand "	13	"		James "	10	"
	Malica " (f)	12	"		Octavia "	6	"
	Robert "	10	"		Julia "	5	"
	Columbus "	3	"		Elisabeth "	4	"
358/290	Asa Whitehurst	51	SC		Mariah "	3	"
	J. M. Daniels	30	"		Alointe " (m)	2/12	"
359/291	Henry Troutman	80	Ga.	372/301	John Montesdeoco	52	Cuba
360/292	B. F. McIntosh	26	Ga.		(seaman)		
	Celestia "	24	"		Charles Montesdeoco	16	Fla.
	Jane "	2	"		Manuel "	15	"
	S. J. Sandrich	35	"		John "	9	"
	(seamstress)			373/302	Robt. Jackson	58	Penn
361/293	J. M. Stafford (as agt. for est. of J. Stafford)	17	Fla.		(ice house keeper)		
	George Stafford	12	Fla.		Nancy Jackson	45	Ga.
362	Unoccupied				Mariah "	17	Fla.
363/294	W.W.McArty (as agt. for S.McArty)	10	Fla.	Page 44:	2nd July 1860		
Page 43:	2nd July 1860				John Jackson	13	Fla.
364/295	Henry Murphy	48	N.Y.		William "	11	"
	Mary "	12	SC	374/303	W. P. Wilson	56	Eng.
	Edward "	14	Miss		(school teacher)		
	William "	11	"	375/304	James Calhoun	23	Eng.
	Thomas "	7	"		(gardener)		
	Martha "	6	"	376/305	Ellen Stephens	57	Ga.
365/296	Sarah Cail	70	Eng.		(seamstress)		
	(midwife)				John Stephens	19	Fla.
	Charles Cail	3	Fla.		Berrian "	14	"
366/297	J. P. McMullen	37	Ga.		Almer "	12	"
	Elisabeth "	33	"		Catherine "	5	"
	Bethel "	14	Fla.		Lucy "	2	"
	Sarah "	10	"	377	Unoccupied		
	Daniel "	8	"	378/306	Josephine Grillion	38	France
	Catharine "	6	"		(farm laborer)		
	James "	4	"		Josephine Prudence	30	France
	Elisa "	2	"		(seamstress)		
367	Unoccupied				Joseph Prudence	17	France

////////////////////////////////////

QUERIES

7-1 LUCY DUBOIS was born 1785 in SC and was the second wife of ALEXANDER CREWS, who was born 1755 in Charleston Dist., SC. Who were Lucy's parents?

Mrs. Donald Hamilton, 1405 6th St., Vero Beach, Fla. 32960

- 7-2 WILLIAM HAIR was born 1783 in NC, probably in Duplin County shortly before a portion was cut into Sampson County in 1784. He resided in Sampson County until about 1810, when he was found in Anson Co. for a short time before moving to Wayne Co., Georgia by 1813. By 1830 he was in Alachua Co., Fla. in the portion that later became Columbia Co. He apparently died sometime after 1850 at Columbia County. His children settled in south Florida. According to the 1790 census of Sampson Co., NC, WILLIAM HAIR could have been the son of one of these three (established by age brackets of the children in each household): WILLIAM; WILLIAM, JR.; or THOMAS HAIR. WILLIAM married an ASHFORD ca. 1804 in Sampson County. What was her first name & was she the daughter of WILLIAM & ELIZABETH ASHFORD of that county? Need to establish names of parents of WILLIAM HAIR & their residence in Duplin County before creation of Sampson Co. Mrs. Donald Hamilton, 1405 6th St., Vero Beach, Fla. 32960.
- 7-3 WILLIAM MESSER was born about 1805 in SC or Ga. Where? He married MARY ANN _____ about 1829. Her maiden name? They were living in Dale Co., Ala. in 1840 but moved to Calhoun Co., Fla. about 1844 where they lived until the 1860's when they settled in Manatee County, Fla. Was WILLIAM a son of PETER MESSER, born 1755 and his wife PEITY, born 1785, who were in Early Co., Ga. in 1820 & in Henry Co., Ala. in 1830 & later? Children of WILLIAM MESSER were: PETER, b. 1830, mar. MARY JACKSON; MARGARET, b. 1835; HENRY, b. 1837, mar. KEZIAH THIGPEN; CURTIS, b. 1840; ELIZABETH, b. 1843; JOEL, b. 1844, mar. MARY E. TILLET; SARAH JANE, b. 1847; JAMES LEMUEL, b. 1850; LUCRETIA "CREASY", b. 1852, mar. GEORGE J. TILLET; THOMAS, b. 1854; AMANDA ANN, b. 1856. Mrs. Annie Platt Newton, 1014 W. Hickory St., Arcadia, Fla. 33821
- 7-4 JOHN PATRICK, born 1810 in SC married MARY ELIZABETH ROBINSON (ROBERTSON) in Wayne Co., Ga. on Aug. 2, 1836. She died 1840 & JOHN married her sister, LINNIA. Was he the son of WRIGHT PATRICK, born 1789 in SC and ELLENDAR, born 1792 in SC? WRIGHT PATRICK was in Colleton Dist., SC in 1830, Camden Co., Ga. in 1840 and Orange Co., Fla. in 1850. JOHN died in Orange Co. in 1887. Where are WRIGHT & JOHN PATRICK buried? Will exchange info on PATRICK families. Richard M. Livingston, P. O. Box 166, Fort Ogden, Fla. 33842.
- 7-5 Need the proven death date & burial place of CALVIN HAIR (WILLIAM CALVIN HAIR), who was born 1808 in Sampson Co., NC. He was a county commissioner at Pine Level in Manatee Co., Fla. in 1860 & said to have died by 1879. At the time of his death, he was living apart from his wife, SARAH JANE (PARKER) HAIR, who died Oct. 11, 1897 and is buried at New Hope Cemetery near Zolfo Springs. His children were: MOLCY CREWS, ANSON HAIR, SOPHIA WINGATE, WILLIAM HAIR, STREATY HAIR, & ANNA WADSWORTH. Mrs. Donald Hamilton, 1405 6th St., Vero Beach, Fla. 32960.
- 7-6 ISHAM (ISOM) B. THOMAS was born in Ga. about 1812. Where? Who were his parents? He married MARY E. _____ about 1846. Her maiden name? They were residing in Lowndes Co., Ga. in 1850, moved to Madison Co., Fla. & finally settled in Alachua Co., Fla. prior to 1860. ISHAM died between 1861/1870. Where is he buried? What relationship were IVEY THOMAS, born 1842 and ISHAM THOMAS, born 1844 who were living with them in 1860 but were not listed as children in 1850? This ISHAM THOMAS born 1844 died in 1929 in Hillsborough Co., Fla. & his death certificate gave his father

- Feb. 20th) Willoughby Whidden (first cousin to Bennett), son of Noah Whidden. Both buried at Bethlehem Cemetery, Hills. County.
4. George Sherrod Durrance, born March 18, 1851; never married.
 5. William Augustus Durrance, born Sept. 15, 1852; married in Polk County on Oct. 31, 1872, Dora Elizabeth Womack.
 6. Francis McDonald Durrance, born Sept. 12, 1854; married 1st, on Jan. 27, 1876, Sarah Mozelle Carlton, daughter of John Sales Carlton and Martha Jane Cason; married 2nd, Margaret Hendry, daughter of John Hendry & Margaret Cheshire.
 7. John Rufus Durrance, born Oct. 29, 1856, died Dec. 6, 1909; married on Dec. 13, 1878, Martha Susan Carlton, daughter of John Sales Carlton & Martha Jane Cason.
 8. Sarah Adaline Durrance, born June 17, 1859; married James J. Mills on Jan. 22, 1876 in Polk County.
 9. James Allen Durrance, born April 6, 1862; married in Polk Co. on Feb. 20, 1884, Gabriella Julia Carlton, daughter of Rev. John Wright Carlton & Susan Lee Cason Murphy.
 10. Mariette "Nettie" Durrance, born Jan. 24, 1865; married Thomas A. Lewis in Polk County on Dec. 23, 1885.
 11. Eula E. Durrance, born Dec. 29, 1868, married George W. Land on June 10, 1885 in Polk County.

William H. Durrance and family moved into Florida shortly after his marriage, probably stopping for a while in Columbia County where his parents were residing and finally settling in Marion County where they were listed in the 1850 census. About 1853, William, his father and his brothers moved into Hillsborough County settling about four miles northwest of present day Bartow.

When William's brother, Capt. F. M. Durrance, formed a Company to protect the area from recent Seminole Indian attacks, William joined the group as their bugler. He was mustered in at Fort Meade on Dec. 29, 1855 and served through Aug. 22, 1856. He joined for two more enlistments in his brother's company. He was mustered in as a Private at Fort Frazier on Aug. 22, 1856 and mustered out on Dec. 21, 1856. Mustered in again at Fort Brooke (Tampa) on Dec. 22, 1856 and served till June 22, 1857. Company returns show that he served as a detached guard at Fort Frazier during the months of February thru April 1857.

During the Civil War, he served as a member of his brother, Lt. John R. Durrance's Detachment of Florida Mounted Volunteers, CSA, at Fort Meade July 14, 1861 to August 27, 1861. William Durrance also served as Polk County's Sheriff during the Civil War years.

William H. Durrance died on Feb. 27, 1879 and Mrs. Durrance died on July 30, 1906. Both were faithful members of Bethel Methodist Church located about six miles south of Bartow and were buried there.

Last Will and Testament of W. H. Durrance: In the name of God - Amen. I William H. Durrance of the County of Polk and State of Fla. being of sound mind and considering the uncertainty of this frail & transitory life do therefore make, ordain and publish and decree this to be my last will and testament, that is to say, First, after all my lawful debts are paid and discharged, the residue of my estate real &

personal, I give bequeath and dispose of as follows, to wit: To my beloved wife, Sarah H. Durrance, the lands and appurtenances on which I now reside and known and described as follows, to wit, The east half of the southwest quarter and the southwest quarter of the south-east quarter of section thirty. Also the northeast quarter of the northwest quarter of section thirty-one, all in township thirty, south of range twenty-five east and containing one hundred and sixty acres, more or less, and being in the said county of Polk and State of Florida, and also my entire stock of cattle consisting of seventy head more or less marked and branded as follows, to wit: crop and half crop in one ear, crop half crop and upper bit in the other ear. "33" others marked crop & half crop and upper bit in one ear under stoop upper & under bit in the other ear, a part of the last described mark are branded "33" and a part with the letter "D" and others marked under sloped upper and under bit in one ear and crop and half crop in the other ear and branded "33". Also the following described lands lying and being in the county of Polk and State of Florida, to wit: the north half of the north east $\frac{1}{4}$ of section 14 in township 31 south of range 23 east and the south $\frac{1}{2}$ of the southeast $\frac{1}{4}$ and the south $\frac{1}{2}$ of the southwest $\frac{1}{4}$ in section 11, township 31 south of range 23 east containing 240 acres more or less, together with the entire stock of horses that I may be in possession of at the time of my decease. Likewise, I make, constitute & appoint Perry O. Keen of the said county of Polk and State of Florida to be the executor of this my last will & testament hereby revoking all former wills by me made. In witness whereof I have hereunto set my hand & affixed my seal on the 15th day of Feb. in the year of our Lord one thousand, eight hundred and seventy-nine.

William H. Durrance

References: W. H. Durrance Bible; Bennett Whidden Bible; Durrance Family file, Polk Co. Historical Library, Bartow, Fla.; 1850 Marion Co., 1860 Hills. Co. & 1880 Polk Co., Census; Military service papers from Washington, DC; Soldiers of Florida; Polk Co. marriage records; Polk Co. "Wills-Domestic & Foreign", #2; Cemetery records of Camp-ground (Pine Level), Lily, & Bethlehem cemeteries; Pioneers of Wire-grass Georgia, Folks Huxford, Vol. 5;

////////////////////////////////////

ORANGE COUNTY: 1850 SLAVE OWNERS

Nicolas Sheppard	James Martin	Virgil Dupont
John C. Houston	Daniel J. Thomas	John Simpson
John D. Sheldon	Henry A. Crane	Algenan S. Speer
Aron Jernigan	Wright Patrick	James O. Duval
Thos. J. Starke	John J. Marshall	Geo. E. Hawes
Elijah Watson		

////////////////////////////////////

POLK COUNTY: HISTORY OF COURTHOUSES

The following article appeared in the Feb. 8, 1912 edition of the Courier-Informant, Bartow, Florida.

In the year 1860 Hillsborough County was divided and the eastern half of it became a new county under the name of Polk, in honor of President Polk.

The first board of county commissioners we have any record of, and we have no record as to how they came in possession of their offices, was composed of Readding Blount, James Hamilton, Isaac Waters and Joseph Mizelle. L. W. Cornelius was county judge.

On June 7, 1861, a business meeting was held by this board and the county was laid off into public roads and county commissioners' districts. Some time in the year 1860 or '61, an election was held to determine the location of a county site. The place voted upon was a beautiful parcel of land just four miles south of Bartow, on the Fort Meade road. Mr. James Hamilton and Zachariah Seward, Jr., built a hewed log building on this land, they owning it at the time, and put a stock of goods in it and made some concessions to the county as an inducement for the county site, but this only created a jealousy which defeated that place and Mud Lake was the county site of Polk County for about one year.

Capt. W. B. Varn's militia company mustered at that place a number of times, but the place was impracticable and was destined to be discontinued, and accordingly an election was called again on the 7th day of October, 1861, and Mud Lake was again voted upon as against a tract of one hundred and sixty acres of land one and one-fourth miles south of the present courthouse, to wit: The northeast fourth of section 18, township 30 south of range 25 east. The name given to the place was Jefferson, which was the legal county site of Polk County for about 5 years.

This last named place was chosen as a county site and was named Jefferson after the great constitutional writer and leader of the democratic party. This city of Jefferson was surveyed up into town lots by W. B. Varn, county surveyor, by an order of the county commissioners' court, and the lots sold to the highest bidder to raise money to build a courthouse, but the Confederate war coming on so soon and this land being reserved for internal improvement purposes could not be bought, and the city of Jefferson was destined to go the way of her senior city, Mud Lake.

After the war the subject of a county site was again one of deep interest to the people of Polk County. After much talk and considerable speculation, "Uncle Jake" Summerlin, out of his big heart, made his famous offer of one hundred and twenty acres for county, school & Church purposes, which was gladly accepted by the board of county commissioners, who gave it its present name in honor of Gen. Bartow, who was killed at the first battle at Manassas. At once the work of improvement and of house building was begun in good earnest. Since then its history is too well known for further comments.

Bartow was always the logical place for a county site. It was here that a company of soldiers was stationed during the Seminole War and some twenty families were forted up during the same time. It was the center of travel and attraction and the place during the early settling up of the county in which all of the newcomers stopped with their families until a place could be selected for their home.

Mr. R. R. Blount kept the first general supply store that was kept in the county here, from 1858 until 1862, hauling his goods from Tampa, a distance of forty-five miles.

In November, 1861, another county election was held for the selection of a full set of county officers, which resulted in the choice of H. S. Seward for the legislature; J. J. Blount, clerk of the circuit court; L. W. Cornelius, judge of probate; H. L. Mitchell, state solicitor; E. T. Kendrick, sheriff; F. A. Hendry, Readding Blount, Isaac Waters & Joseph Mizelle, county commissioners.

The sheriff was ex-officio tax assessor and collector. He made his lists and kept his books according to his own choice of style and made his reports and turned over moneys when called upon by the board

of county commissioners. After the organization of Major Blount's Company in March, 1862, William Durrance acted as sheriff and John Davidson, clerk of the court until the end of the war. There are no records that give any account of the assessed valuation of property up to several years after the war. The taxes collected in any one year up to 1866 for all purposes never amounted to one thousand dollars. No courts were held during these years of strife, and, all taxes collected during that time, after paying the commissioners and sheriff for their services, were used in supporting the poor soldiers' families. Committees were appointed by the county commissioners for each commissioner's district to look after their wants, and the tax money was turned over to them for that purpose by the sheriff. Spinning wheels were provided for the soldiers' wives, and James B. Crum was elected wheelmaker at a cost of \$8.50 per spinning wheel, and he did his work faithfully and honestly.

The courthouse being at this time one of some interest to the county. There was no courthouse built at the city of Mud Lake during the one year's time of its existence as the capital of Polk County, neither at Jefferson during its four years' term, but there was a hewed log store-house, not in use as such after the war, four miles south of Bartow, and a hewed-log Baptist church house two and one-half miles south of Bartow, in both of which circuit court was held after the war for two years by Judge Bush and Judge Gettis, and also in the old Summerline Institute, which was completed before the new courthouse was begun by John A. McAulay.

On June 15, 1867, the county commissioners awarded the contract to build the first courthouse in Polk County to John McAulay for \$3,800. The house was to be framed and weatherboarded on the outside and ceiled on the inside. The frame was very heavy, being heavily braced top and bottom and every brace tenoned and draw-pinned into the timbers at each end, and all the studding was tenoned and draw-pinned into the sills above and below. A good deal of the timbers were hewn out by hand, and all of the weatherboarding and ceiling was dressed by hand and the house was never painted. Twelve months was allowed in which to build this house and it was to be paid for in current money or its equivalent in county bonds at 25 per cent discount. The first jail was also built at the same time at a cost of \$1,600 and paid for in cash or bonds of the same valuation. It was built by U. R. Durrance out of hewn timbers eight inches square, laid one upon the top of the other. It was about sixteen feet square and two stories high, and was utterly worthless as prisoners could not be kept in it. It soon became rotten and was condemned and was afterwards burned to the ground by some good, law-abiding citizen. The second jail was built a few years later and worth little more than the first. The second courthouse was built in 1884 by J. H. Thompson at a cost of \$9,000.

The third and present courthouse was erected at a cost of \$100,000 without the issuance of one dollar of indebtedness. The courthouse and lot is valued at \$160,000.

////////////////////////////////////

HARDEE COUNTY: NEW ZION BAPTIST CHURCH CEMETERY

Continued from Issue #6:

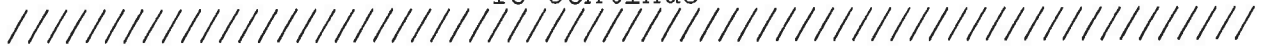
- Pleoman, dau. of R. A. & F. Roberts Sept. 7, 1896 - May 28, 1908
- O. K. Roberts Oct. 14, 1901
- Mrs. Julia Rutledge Sept. 12, 1838 - April 24, 1913
- J. A. Gough 1852 - 1935
- Mrs. J. A. Gough Jan. 6, 1861 - Feb. 19, 1915

Alex W. Gough Oct. 12, 1882 - June 23, 1958
 Lula G. Williams Feb. 21, 1886 - Jan. 25, 1968
 Carrie A. Roberts July 14, 1887 - Feb. 8, 1966
 Joseph C. Roberts Jan. 3, 1884 - Feb. 5, 1945
 Josie Lee, dau. of J. C. & C. A. Roberts Mar. 10, 1914
 Died September 17, 1915
 Joseph C. Roberts, Jr. 1923 - 1925
 Albert Howell 1885 - 1930
 Julia Howell October 23, 1849 - January 16, 1914
 Joseph Howell June 8, 1847 - January 29, 1903
 S. L. Wilkins 1856 - 1931
 Mrs. S. L. Wilkins 1858 - 1940
 Bessie Miller 1919
 Joel Roberts, died March 24, 1894, aged 75 years
 Sarah (Youngblood), wife of Joel Roberts, died Dec. 18, 1877
 Aged 55 years.
 William Albert Roberts March 19, 1870 - May 14, 1962
 Florrie Revell Roberts May 30, 1873 - October 24, 1922
 Ottie G., daughter of W. A. & F. A. Roberts, Died Dec. 15, 1900
 Aged 1 year and 16 days
 Virginia Krohn December 2, 1898 - May 15, 1971
 Edward J. Limberg February 9, 1876 - June 15, 1958
 Mary Elizabeth Alston May 28, 1922 - September 27, 1924
 Bonnie B. Herrin 1894 - 1975
 Toy Gay Neal 1901 - 1969
 Lewis D. Dupree March 24, 1859 - December 24, 1939
 Fannie L., wife of L. D. Dupree March 4, 1871 - Jan. 4, 1904
 Infant son of Mr. & Mrs. L. D. Dupree, Born Dec. 31, 1903
 L. D. Dupree, Jr. Nov. 18, 1917 - May 19, 1918
 Ida V. Dupree January 7, 1885 - April 2, 1936
 Jay Roberts January 16, 1916 - August 17, 1972
 Charles H. Roberts Sept. 20, 1867 - May 27, 1955
 Mary Ada (Gillis) Roberts January 8, 1875 - November 3, 1944
 Bernice, son of C. H. & M. A. Roberts Mar. 28, 1899 - Sept. 25, 1900
 Henry, inf. son of Mr. & Mrs. C. H. Roberts August 6, 1906
 Died October 3, 1907
 Alderman Roberts May 10, 1876 - October 14, 1918
 Roy Roberts Jan. 16, 1903 - Jan. 17, 1903
 Herschel Roberts Oct. 12, 1903 - Oct. 12, 1903
 Cuthbert Roberts Nov. 1, 1885 - aged 1 day
 Cordelia Roberts June 9, 1880 - Jan. 31, 1885
 Daniel, son of Robert & Mary E. Roberts Apr. 8, 1878 - Apr. 25, 1897
 Francis Dupree
 J. H. Surrency, born March 6, 1868, died October 26, 1937
 Gettis Ory Dupree Dec. 26, 1891 - Oct. 17, 1904
 Jettie Lee Dupree Dec. 27, 1894 - April 4, 1904
 Dupree Died Dec. 22, 1880 (or 1890)
 Dupree Died Sept. 30, 1891
 Dillie I., dau. of L. D. & F. L. Dupree Oct. 22, 1890 - Feb. 15, 1895
 Vadie Ola, dau. of L. D. & F. L. Dupree Feb. 17, 1902 - Feb. 17, 1902
 Frank Farabee Oct. 17, 1899 - Jan. 23, 1958
 Florence (Roberts) Farabee May 18, 1866 - Sept. 10, 1959
 Delaney Jackson Farabee Dec. 1, 1859 - May 5, 1941
 Inf. son of D. J. & F. F. Farabee Aug. 10, 1889 - Aug. 26, 1891
 R. V., son of D. J. & F. F. Farabee May 18, 1886 - Sept. 21, 1895
 Inf. son of D. J. & F. F. Farabee Jan. 30, 1898 - Oct. 4, 1899
 Mary E. (Carlton) Roberts June 17, 1845 - May 7, 1925
 Robert Roberts June 19, 1842 - Feb. 21, 1912
 Louis Nobles

Alberta Nobles
 Baby Anderson Feb. 1, 1906 - Feb. 3, 1906
 W. L. Anderson Oct. 15, 1856 - Sept. 3, 1905
 Miram Anderson July 27, 1863 - Sept. 9, 1933
 Eli G. Rogers Oct. 1, 1855 - Sept. 8, 1915
 L. D. Dupree Aug. 24, 1835 - Dec. 27, 1909
 Delilah Dupree Nov. 7, 1842 - Nov. 27, 1916
 W. O. Burnham, died March 27, 1944, aged 74 years
 Grover A. Harrison July 4, 1888 - Feb. 13, 1947
 Rev. George W. Anderson July 4, 1888 - March 19, 1970
 Ida D. Anderson Feb. 6, 1893 - March 9, 1970
 Lela May Anderson Dec. 19, 1912 - Nov. 23, 1913
 Infant of Mr. & Mrs. G. W. Anderson June 23, 1914 - June 23, 1914
 Infant of Mr. & Mrs. G. W. Anderson Sept. 3, 1915 - Sept. 3, 1915
 Infant of Mr. & Mrs. G. W. Anderson May 9, 1919 - May 9, 1919
 Grady James Kersey, died April 1934, age 73 years
 Edith Mae Kersey 1910 - 1911
 Jim Downing Kersey June 27, 1865 - December 19, 1924
 Josephine H. Kersey October 13, 1869 - November 22, 1947
 Arthur Edward Kersey 1904 - 1952
 Andrew J. Stewart 1860 - 1941
 Theodosia E. Stewart 1872 - 1950
 Ann (Stephens), wife of John Coker May 11, 1862 - Oct. 11, 1907
 Rev. John Coker December 22, 1854 - June 2, 1925
 Nancy A. (Stephens), wife of John Coker Nov. 22, 1854 - June 24, 1898
 Lily Myrtie, dau. of J. & N. A. Coker Sept. 18, 1893 - Feb. 2, 1899
 Perry M. Johnson 1885 - 1964
 Priscilla Johnson 1888 - 1963
 John W. Harris, died Dec. 28, 1884, age 15 years
 Flossie M., dau. of Mr. & Mrs. John McLeod Sept. 25, 1899
 Died May 26, 1918
 John W. McLeod Aug. 23, 1866 - Sept. 3, 1955
 Martha A. McLeod May 11, 1876 - October 30, 1965
 Enoch Marvin McLeod, Fla, Pvt, Co F, 306 Ammo Tn, WWI
 October 17, 1894 - December 18, 1968
 William T. Red McLeod 1905 - 1967
 Daniel H. Duncan November 22, 1898 - August 13, 1936
 Jack Z. T. Duncan August 6, 1878 - March 8, 1942
 Sarah Jane Duncan September 25, 1871 - February 6, 1968
 Wilma, dau. of Z. T. & S. J. Duncan Sept. 18, 1912 - Nov. 31, 1913
 Charity A. Duncan 1844 - 1926
 Martha E. (Stephens), wife of William McLeod
 May 16, 1831 - September 28, 1906
 William McLeod February 24, 1814 - December 18, 1881
 Mary M. (Howard), wife of W. E. Stephens
 May 1, 1848 - April 12, 1879
 John H., son of W. E. & M. M. Stephens Dec. 9, 1869 - Nov. 20, 1892
 Wilson E. Stephens Feb. 2, 1850 - Dec. 5, 1925
 Benjamin Stephens Oct. 2, 1821 - Feb. 4, 1881
 Silewnce Stephens Jan. 2, 1810 - Sept. 29, 1886
 Thos. M. Stephens Sept. 20, 1886 - Oct. 24, 1886
 Malissie J. Stephens May 23, 1884 - Nov. 1, 1886
 Florence Stephens Hanchey Feb. 22, 1908 - Dec. 17, 1933
 Nancy A. Simmons Stephens Dec. 10, 1880 - Dec. 28, 1936
 Benjamin M. Stephens May 1, 1872 - April 9, 1952
 James Bethel, son of D. A. & Eugena Nobles
 January 26, 1895 - June 30, 1895
 Eugenia Nobles August 11, 1874 - March 19, 1898
 Rev. Alton L. Roberts April 5, 1896 - April 8, 1970

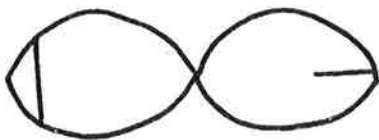
Addie C. Roberts May 2, 1902 -
 Mary Alberta, dau. of S. L. & L. V. DeVane
 November 7, 1912 - Feb. 24, 1913
 Jewel, dau. of S. L. & L. V. DeVane
 March 5, 1921 - November 12, 1925
 Milton E. (Gene) Barkdoll, U. S. Army
 March 22, 1930 - July 5, 1975
 Michael D. Stephens 1952
 Baby Stephens 1919
 Noland L. Stephens 1918 - 1919
 L. Fred Stephens 1892 - 1967
 Ethel A. Stephens 1894 -
 Ona Hull Sloan 1901 - 1969
 Cecil F. Hull January 2, 1882 - October 24, 1952
 Solon J. Hull August 30, 1879 - December 13, 1960
 Culley W. Roberts July 25, 1934 - March 19, 1935
 Rev. Oscar O. Roberts Dec. 16, 1893 -
 Baptist Preacher & Evangelist, Teacher-Lecturer-Writer,
 Recorded in Who's Who, Composer of over 500 Gospel Songs
 Lottie Bell Roberts March 6, 1896 -
 Musician, Loving mother, faithful minister's wife

*****To Continue*****



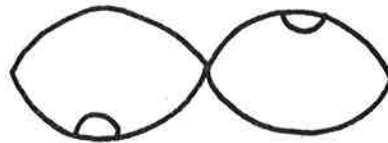
HILLSBOROUGH COUNTY: EARLY MARKS & BRANDS

Hillsborough County pioneers recorded their marks & brands beginning in 1850 at the county courthouse in the Record of Marks & Brands. There were many sorts of ear marks that were used by these people and are still used by cattlemen today. Samples of these marks are shown below:



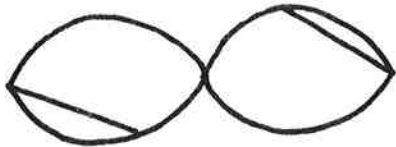
Crop

Split



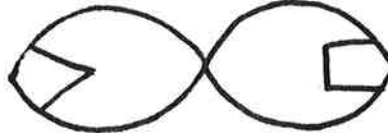
Underbit

Upperbit



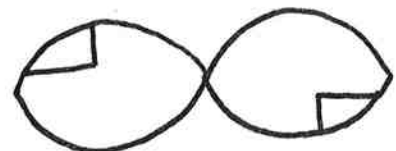
Underslope

Upperslope



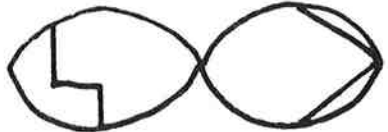
Swallowfork

Staplefork



Uppersquare

Undersquare



Crop, Half Crop

Sharp

RECORD OF MARKS & BRANDS

Antonio Wordehoff March 7, 1850	Mark: Crop & half crop in one ear; crop & split in the other	Brand: W
Eliza Addison March 7, 1850	Swallowfork & underbit in one ear; swallowfork in the other	A2
Joel Addison March 7, 1850	Swallowfork & underbit in one ear; Underbit in the other	A2
Elizabeth Cooper April 8, 1850	Crop & two splits in one ear; Crop & split in the other	EC
Martha Brewer April 8, 1850	Swallowfork in one ear; Upperbit in the other	4
Daniel Gillett April 11, 1850	Split & underbit in one ear Underslope in the other	DG
Dr. Franklin Branch May 3, 1850	Upper & underslope in each ear	△
Alexander P. Burnett May 6, 1850	Poplar leaf in one ear Crop split & underbit in other	
George Simmons May 16, 1850	Two underbits in each ear	9
Nathan Boyt May 17, 1850	Crop, two split & underbit in one Smooth crop in the other	NB
John L. Skipper May 29, 1850	Poplar leaf in one ear Undersquare in the other	JL
Sterling McCarty May 30, 1850	Crop split & underbit in one Crop & underbit in the other	+
John Mercer June 15, 1850.	Swallowfork & underbit in one Undersquare in the other	97
Alexander Gage July 2, 1850	Split in each ear (It being the mark & brand of R. O. Gage purchased by A. Gage).	↑
Emily C. Garrison July 4, 1850	Crop & split in one ear Swallowfork & two underbits in other	SS
W. W. Walker July 5, 1850	Crop & two underbits in one ear Split, under & upperbit in other	Ⓜ
Stephen Charles Sparkman July 10, 1850	Crop & split in one ear Swallowfork in the other	SS
Thomas Cowart July 20, 1850	For his children (Elizabeth W., Nathaniel, Lucinda Ann, Mary Ann Eliza & Roady Jane Cowart): Swallowfork in one ear Undersquare & upperbit in the other	TC, SC
	Underbit & underslope in one ear Undersquare in the other	62
	Crop & split in one ear Crop, split & upperbit in other	J, NC
J. D. Green Aug. 2, 1850	Two underbits in each ear	Υ

Henry Lankford Aug. 19, 1850	Mark: Swallowfork & underbit in one Two underbits in the other	Brand: H
Charles C. Macy Aug. 27, 1850	A crop & underbit in each ear	CN
John McNeill Sept. 25, 1850	Crop & half crop in one ear Crop & undernick in the other	J6
John B. and Joshua Buffrum Oct. 16, 1850	Upper or undersquare in one ear Poplar leaf in the other	Y
Willoby Whiddon, Jr. Oct. 31, 1850	Swallowfork & underbit in one ear Underslope in the other	W
Owen Cunningham Nov. 15, 1850	A hole in each ear	0
W. H. J. Seal Nov. 20, 1850	Swallowfork in the right ear Crop in the left ear	
Joseph Mizell Nov. 27, 1850	Crop & half crop in one ear Crop & upperbit in the other	J2
A. J. Snider Dec. 2, 1850	Split in one ear Undersquare in the other	71
William H. Shephard for C. Jane Whidden July 9, 1850	Swallowfork & underbit in one ear	SJ
Wm. L. Campbell April 4, 1851	Uppersquare in one ear Undersquare in the other	OX
Martin Cunningham April 5, 1851	Staplefork in one ear Split in the other	62
Amanda Malvina Gage April 5, 1851	Crop split upper & underbit each ear	00
Odet Phillippe April 12, 1851	Fleur-de-lis in one ear Crop & underbit in the other	OP
Seth Howard April 15, 1851	Poplar leaf in each ear	SX
John Mercer April 29, 1851	Pail handle in one ear Smooth crop in the other	93
Thomas Underhill April 29, 1851	Swallowfork & underbit in one ear Upper & under fleur-de-lis in other	71
John Underhill April 29, 1851	Crop poplar leaf in one ear Smooth crop in the other	JU
Constant Bourguardey May 9, 1851	Crop & underslope in one ear Swallowfork in the other	CB
J. M. Hayman May 20, 1851	Crop & two splits in one ear Crop & half crop in the other	H
John Pearce May 28, 1851	Swallowfork, under & upperbit in one Swallowfork & undersawset (?) in other	JP
Joseph Howell June 3, 1851	Swallowfork in one ear Split in the other	JO
Stephen T. Hollingsworth June 9, 1851	Swallowfork, upper & underbit in one Sharp in the other	SH

Name	Date	Mark	Brand
Madison Post	June 12, 1851	Mark: Split & hole in right ear Crop & uppersquare in the left	MP
Gregorio Bravo	June 16, 1851	Two splits in each ear	FB
Michael F. Robles	June 17, 1851	Smooth crop & split in each ear	32
Mary Ann Robles	June 17, 1851	Swallowfork in one ear Underbit in the other	32
Penelope Lockwood	July 5, 1851	Upper figure seven in each ear	P
Francis M. Durance	July 8, 1851	Swallowfork & underbit in one ear Crop & underbit in other. Two dewlopes.	D
Lucy Ann Celia Durance	July 8, 1851	Crop & underbit in one ear; Swallowfork and half fleur-de-lis in other. Two dew lopes.	
Theopholus Weeks	July 8, 1851	Swallowfork & underbit in one ear Crop & two splits in other	TW
Sherod S. Weeks	July 8, 1851	Swallowfork & underbit in one ear Fleur-de-lis in other. Dewlopped.	S6
Leroy G. Lesly	July 8, 1851	Pail handle in each ear	LG
John T. Lesly	July 8, 1851	Pail handle in one ear Pail handle & hole in other	LG
Emory L. Lesly	July 8, 1851	Pail handle in one ear	LG
Lewis Daughtrey	July 15, 1851	Crop & two splits in one ear Undersquare & underbit in other	LD
James Alderman	July 19, 1851	Swallowfork, under & upperbit in one Crop & two underbits in the other	4
James Alderman	July 19, 1851	Swallowfork & underbit in one ear Crop & two underbits in the other	4
Simeon L. Sparkman	July 19, 1851	Crop, two splits & underbit in one Underslope in the other	SS
John Jackson	Sept. 2, 1851	Staplefork in one ear Pail handle in the other	JJ
J. W. Riggs	Sept. 3, 1851	Poplar leaf in one ear Swallowfork in the other	R
J. D. E. Riggs	Sept. 1, 1851	Poplar leaf in one ear Crop & split in the other	10
John Mercer	Sept. 13, 1851	Split & upperbit in one; Undersquare in other (formerly W. Hancock's mark and brand bought by John Mercer)	88
Daniel Sloan	Sept. 20, 1851	Uppersquare in one ear; Underslope in other (Formerly A. H. Jones mark & brand bought by Daniel Sloan)	JJ
Bryant Pennington	Sept. 27, 1851	Swallowfork in one ear Split in the other	7P

		Brand
Jacob Miller Oct. 1, 1851	Mark: Two splits in each ear (Being the mark & brand of G. Bravo bought by J. Miller)	FB
Benjamin Cowart Oct. 18, 1851	Swallowfork & underbit in one ear Smooth crop in the other	B→
William Underhill Dec. 5, 1851	Swallowfork & underbit in one ear Undersquare & upperbit in the other	WU
Peter Brown Dec. 23, 1851	Two swallowforks in each ear	B
Rigdon Brown Dec. 23, 1851	Two swallowforks in one ear Swallowfork in the other	B
William Whiddon Jan. 5, 1852	Swallowfork & underbit in one ear Underbit in the other	W
John Gallagher Feb. 7, 1852	Undersquare in each ear	JG
James Gallagher Feb. 7, 1852	Undersquare & upperbit in each ear	JG
John I. Hooker Feb. 17, 1852	Swallowfork upper & underbit in one Smooth crop in the other	22
James Hambleton Feb. 17, 1852	Undersquare in the left ear Hole in the right ear	H
James T. Magbee Feb. 18, 1852	Swallowfork in each ear	M
Dempsey & Matilda Tillis Feb. 23, 1852	Undersquare in one ear Split & two underbits in the other	55

#####TO BE CONTINUED#####

#####

FLORIDA MEN WHO SERVED IN THE UNION FORCES DURING CIVIL WAR

The listing of Union soldiers from Florida collected from the National Archives and contributed by Mr. Vernon Peeples of 523 North Shore Dr., Punta Gorda, Fla. 33950 is continued from Issue #6.

- ALDERMAN SIMMONS - Enlisted April 30, 1864 at Key West by Lt. Pretz; rank of Private; Company "B".
- ANDREW J. SIMMONS - Enlisted Sept. 2, 1864 at Fort Myers by Capt. Crane; Rank of Private; Co. "B".
- WILLIAM R. SMITH - Enlisted Feb. 23, 1864 at Key West by Capt. Brown; Rank of Corp.; Co. "B".
- SILAS SNIDER - Enlisted Feb. 6, 1864 at Key West by Lt. Myers; Rank of Private; Mustered in Feb. 15, 1864 at Key West; Co. "A".
- MATTHEW SPARKMAN - Enlisted Sept. 18, 1864 at Cedar Keys by Lt. McCollough; Rank of Cook; Mustered in Sept. 18, 1864 at Cedar Keys; Co. "A".
- PETE SPARKMAN - Enlisted Sept. 18, 1864 at Cedar Keys by Lt. McCollough; Rank of Cook; Mustered in Sept. 18, 1864; Co. "A".
- JAMES H. STEPHENS - Enlisted April 11, 1864 at Key West by Lt. Pretz; Rank of Private; Com. "B".

SETH STEVENS - Joined company Feb. 5, 1865; Rank of 2nd Lt.; Co. "B".

EDWARD STEWART - Enlisted Aug. 26, 1864 at Key West by Lt. Brackett;
Rank of Private; Co. "B".

JAMES STEWART - Enlisted Aug. 24, 1864 at Fort Myers by Capt. Crane;
Rank of Private; Co. "B".

REED STORY - Enlisted Feb. 23, 1864 at Key West by Capt. Brown; Rank
of Private; Co. "B".

THOMAS SUGGS - Enlisted Dec. 8, 1863 at Key West by Capt. Bowers; Rank
of Private; Mustered in Dec. 17, 1863 at Key West; Co. "A".

AMOS J. SULLIVAN - Enlisted March 16, 1864 at Key West by Capt. Brown;
Rank of Private; Co. "B".

FRANK D. SULLIVAN - Enlisted Feb. 23, 1864 at Key West by Capt. Brown;
Rank of Private; Co. "B".

JERRY SULLIVAN - Enlisted March 1, 1864 at Key West by Capt. Brown;
Rank of Private; Co. "B".

THOMAS SULLIVAN - Enlisted Feb. 23, 1864 at Key West by Capt. Brown;
Rank of Private; Co. "B".

BERRYAN SUMROLES - Enlisted May 27, 1864 at Fort Myers by Capt. Childs;
Rank of Private; Co. "B"; Deserted June 20, 1864.

RYALL SUMROLES - Enlisted May 27, 1864 at Fort Myers by Capt. Childs;
Rank of Private; Co. "B"; Deserted June 20, 1864.

HENRY SUMROLES - Enlisted May 29, 1864 at Fort Myers by Capt. Green;
Rank of Private; Co. "B"; Deserted June 20, 1864.

JOHN E. M. TEDDER - Enlisted May 20, 1864 at Cedar Key by Lt. Brackett;
Rank of Private; Co. "B".

JAMES C. THIGPEN - Enlisted April 15, 1864 at Fort Myers by Capt. Crane;
Rank of Private; Co. "B".

THOMAS J. THIGPIN - Enlisted April 15, 1864 at Fort Myers by Capt.
Crane; Rank of Private; Co. "B".

THOMAS L. THIGPIN - Enlisted April 15, 1864 at Fort Myers by Capt.
Crane; Rank of Corp.; Co. "B".

WILLIAM H. THIGPIN - Enlisted April 21, 1864 at Key West by Lt. Brackett;
Rank of Private; Co. "B".

JOSIAH W. THURMAN - Enlisted March 15, 1864 at Key West by Capt. Bowers;
Rank of Private; Mustered in March 16, 1864 at Key West; Co. "A".

AMBROSE G. TOMPKINS - Enlisted Jan. 15, 1864 at Fort Myers by R. A.
Graffe; Rank of Private; Mustered in Feb. 25, 1864 at Fort Myers;
Co. "A".

ALANZO W. TUCKER - Enlisted April 16, 1864 at Fort Myers by Capt. Crane;
Rank of Private; Mustered in at Fort Myers; Co. "A".

ELIJAH H. TUCKER - Enlisted April 1, 1864 at Fort Myers by Capt. Crane;
Rank of Private; Mustered in April 15, 1864 at Fort Myers; Co. "A".

JESSE TUCKER - Enlisted Feb. 2, 1865 at Fort Myers by Lt. McCollough;
Rank of Private; Co. "B".

THOMAS TUCKER - Enlisted April 15, 1864 at Fort Myers by Capt. Crane;
Rank of Private; Co. "B".

WILLIAM TUCKER - Enlisted June 6, 1864 at Fort Myers by Capt. Green;
Rank of Private; Co. "B".

CLEMENT R. TYNER - Enlisted Sept. 20, 1864 at Fort Myers by Capt. Crane; Rank of Private; Co. "A".

ALLEN T. WALKER - Enlisted March 18, 1864 at Fort Myers by Capt. Crane; Rank of Private; Mustered in April 15, 1864 at Fort Myers; Co. "A".

JOHN WALKER - Enlisted April 15, 1864 at Fort Myers by Capt. Crane; Rank of Private; Mustered in April 15, 1864 at Fort Myers; Co. "A".

OLIVAR WALKER - Enlisted April 15, 1864 at Fort Myers by Capt. Crane; Rank of Private; Mustered in April 15, 1864 at Fort Myers; Co. "A".

WILLIAM J. WALKER - Enlisted March 18, 1864 at Fort Myers by Crane; Rank of Private; Mustered in April 15, 1864 at Fort Myers; Co. "A".

JACKSON WARD - Enlisted Dec. 17, 1863 at Key West by Capt. Bowers; Rank of 3rd Sarg.; Mustered in Dec. 17, 1863 at Key West; Co. "A".

WILLIAM WARD - Enlisted Feb. 6, 1864 at Key West by Capt. H. W. Bowers; Rank of 1st Corp.; Mustered in Feb. 6, 1864 at Key West; Co. "A".

USA**USA**USA**USA**USA**USA**USA**USA**USA**USA**USA**USA**USA**USA**USA**USA

CASON FAMILY BIBLE RECORD

This family Bible record is contributed by Mrs. Ruby Cason Iliff, N-2506 Denver, Spokane, Washington 99207. Her grandfather, Dennis Marion Cason, was a pioneer settler of Wauchula, Hardee County, Florida.

Births:

William L. Cason was born April 21 AD 1829.

Susan Lee Cason was born October 20th AD 1830.

Martha Ann Jane Cason was born August 2 AD 1833.

Dennis Lake Cason was born June 6th AD 1837.

Abigail Sarah Ann Cason was born July 18th AD 1839.

John B. Cason was born October 11th AD 1842.

George A. M. Cason was born March 20th AD 1847.

William R. Cason first son of William L. Cason & Martha Ann his wife was born March 15 AD 1853.

Abigail Martha Ann Robinson first daughter of James Robinson & Sarah his wife was born June 19th AD 1860.

Thomas Bradford Cason first son of D. M. Cason & M. R. Cason his wife was born January 17th 1862.

Archy Franklin Cason first son of G. A. Cason & A. E. Cason his wife was born March the 18th 1867.

Anna E. Cason was born Oct. 15, 1879.

Florence Cason born Dec. 22, 1900 daughter of G. A. Cason & Anna Cason his wife.

Marriages:

James J. Robinson and Sarah Cason was married August 7th AD 1859.

Dennis M. Cason & Matilda R. Lee was married December 20th, 1860.

G. A. Cason & Elizabeth Murphy was married December the 27, 1865.

Marion G. Carlton and Sarah F. McKinney was married Feb. 9th, 1873.

G. A. Cason & Anna Wallane was married Dec. 22, 1899.

Florence Cason and Shafter Gillespie were married March 15, 1919.

Deaths:

Martha Ann Cason wife of William L. Cason departed this life March 26th AD 1853.

Abigail Sarah Ann Robinson departed this life November 20th 1861, aged 22 years, 4 months, 2 days.

Silas Cason departed this life July 13th 1862, aged 62 years, 6 months, 27 days.
 William L. Cason departed this life August 14th 1864, aged 35 years, 3 months, 23 days.
 John S. Carlton departed this life June 28th, 1862.
 William S. Carlton departed this life January 18th, 1863.
 Abigail Cason wife of Silas Cason departed this life October 29th, 1870.
 Mrs. A. E. Cason wife of G. A. Cason departed this life July 26, 1899.
 G. A. Cason departed this life September 16th, 1917, aged 70 years, 6 months.
 Aarchy Cason first son of G. A. Cason and A. E. Cason nee Murphy died Dec. 22 at the age of 25 years.
 Anna E. Cason (Jones) departed this life July 25th 1961.

NOTE: Part of the handwriting in this family record was difficult to read.

////////////////////////////////////

THOMAS H. ALBRITTON 1818-1907

Thomas H. Albritton was born on Savage Creek in Bryan Co., Ga. on April 6, 1818, son of Thomas Albritton and Mary "Polly" Strickland and grandson of John Albritton, Revolutionary Soldier from North Carolina.

Thomas first married Miss Lanie Wainwright, born 1821, daughter of Joseph and Lanie Wainwright. No information could be found on this marriage. Apparently Lanie Wainwright Albritton died prior to 1838. On July 11, 1838, at Kettle Creek in Ware County, Georgia, Thomas H. Albritton married Miss Frances "Fannie" Waldron. She was born on March 25, 1821 in Bryan County, daughter of Oliver Waldron and Ann Sylvester. Children of Thomas & Frances Albritton:

1. Lydia Ann Albritton, born November 18, 1840; died Feb. 27, 1916; married 1st, Nelson Lockler (born 1830, died 1884) on Thursday, Feb. 21, 1861 in Manatee County, Fla.; married 2nd, Benjamin Franklin Baldwin on July 30, 1885 in Manatee County, Fla.
2. Charlotte Albritton, born Sept. 30, 1842; died Mar. 4, 1909; married, 1st, William J. Hooker in Manatee County on Thurs., Feb. 21, 1861 apparently in a double marriage service with her older sister, Lydia Ann & Nelson Lockler; Mr. Hooker died in the Civil War and Charlotte married, 2nd, on Mar. 1, 1866 in Manatee County, Wright Carlton, son of Daniel Wilson Carlton.
3. George W. Albritton, born Oct. 9, 1844; died Feb. 25, 1918; married Lenora Elizabeth Garner on Oct. 3, 1867. She was born on July 4, 1849 in Carroll Co., Miss., daughter of Andrew W. & Louisa E. Garner.
4. James Arthur Albritton, born July 15, 1846; died May 16, 1921; married in Manatee County on Feb. 9, 1871, Miss Mary Frances Ivey, daughter of Francis A. Ivey and Barbary Underhill.

5. Catherine Albritton, born Oct. 11, 1848; married in Manatee County on Jan. 23, 1879, James Langford, son of Henry Langford and Jane Whidden. Married 2nd, Sidel Myers.
6. Oliver Asbury Albritton, born Dec. 2, 1849; died Nov. 1, 1917; married in Manatee County on Feb. 9, 1871, Miss Caroline Elizabeth Ivey, daughter of Francis A. Ivey & Barbary Underhill, sister of his brother James' wife, Mary F. Ivey.
7. Frances Micheal Albritton, born Jan. 6, 1853; died Feb. 13, 1915; married on Oct. 3, 1872, Jesse Bolivar Mizell, son of Morgan Mizell & Mary Fletcher Tucker; Jesse Mizell died in 1884 and Frances married in Monroe County, Fla., on Dec. 6, 1886, Andrew Jackson McLennon.
8. Thomas Guilford Albritton, born April 6, 1854; died Sept. 15, 1933; married in Manatee Co., on April 15, 1875, Georgia Ann Coker, daughter of Wesley A. Coker & Nancy Jane Carlton.
9. Mary Elizabeth Albritton, born Feb. 19, 1856; died 1946; married on Oct. 7, 1875, Daniel Coker, son of Wesley A. Coker & Nancy Jane Carlton.
10. Ann Albritton, born April 15, 1859; died April 3, 1931; married on Sept. 21, 1881 Peter Jones Carlton, son of Rev. John Wright Carlton & Mrs. Susan Lee Cason Murphy, grandson of Judge John Carlton and grandson of Silas Cason & Abigail Langford.
11. Arcadia (Arcada) Matilda Albritton, born March 6, 1861 (date from Bible record - tombstone info gives date as 1860 but in June 1860 census, Ann Albritton is listed as youngest child of Thomas H. Albritton); died May 28, 1932; married Sept. 2, 1880 in Manatee County, William W. Coker, son of Wesley A. Coker & Nancy Jane Carlton.
12. Oregon C. Albritton, born Nov. 19, 1864; married Jonathan Thomas Coker on April 9, 1885. He was the son of Wesley A. Coker & Nancy Jane Carlton.

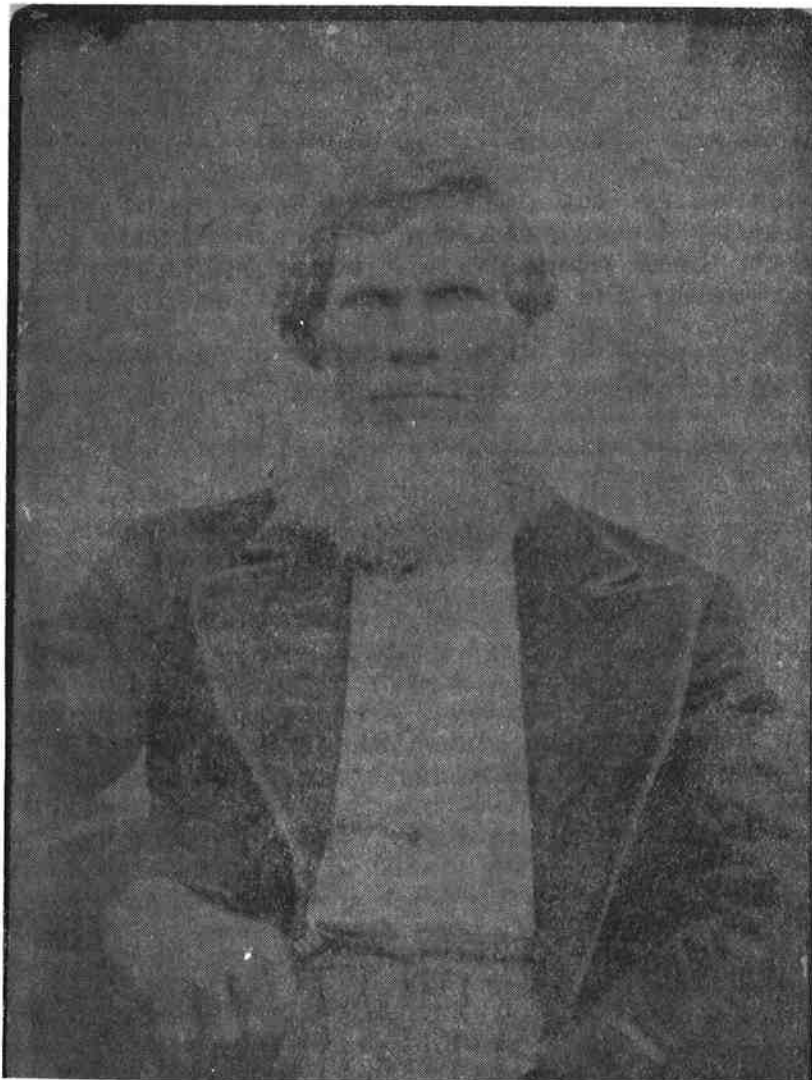
Thomas H. Albritton served in the Second Seminole Indian War in Capt. James Walker's Company of Ware County Militia with his father and his brothers, Henry, Arthur & James. They enrolled June 9th, 1838 and were discharged August 19th, 1838.

He also served in Capt. Jones' Company of Georgia Mounted Militia. He enrolled on August 26th, 1840 at Waresboro at which time his description was given as 6 foot tall, grey eyes, black hair & fair complexion. This Company took up a position at Albritton's and the northern border of the Okefenokee Swamp from which position it scouted the adjacent hammocks and swamps to protect the people along that border from Indian attacks. Thomas was mustered out of service on Sept. 15, 1840 at Albritton's.

Thomas and Frances Albritton were members of High Bluff Primitive Baptist Church in present Brantley County, Georgia. She was received and baptized on Dec. 17, 1842 and he likewise on March 11, 1843. They were both dismissed by letter Dec. 13, 1845 when they moved to Columbia County, Florida, along with his father-in-law, Oliver Waldron.

The Albrittons lived in Columbia County until about 1854 when they moved into Putnam County, residing there several years and prior to 1860

moving south to Manatee County, settling on Horse Creek in an area near present day Lily (Hardee County), Florida. The June 12th, 1860 census shows Thomas H. Albritton & family living in Manatee County along with his neighbors John M. & Elizabeth Jackson Bates, John & Alice Blackshear Platt, Joshua & Martha Platt, Louis B. & Nancy Platt, and Oliver & Ann Sylvester Waldron. Manatee County deed books shows that Thomas H. Albritton purchased land from the Trustees of the Internal Improvement Fund for the State of Florida at least three times. On Feb. 13, 1861, he bought 40 & 4/100 acres for \$.75 an acre, located in the NW $\frac{1}{4}$ of the NE $\frac{1}{4}$ of Section 12 in T36S, R23E; on Dec. 2, 1862, 40 & 3/100 acres for \$.75 an acre in SE $\frac{1}{4}$ of SW $\frac{1}{4}$ of Section 1 in T36S, R23E; and on Dec. 31, 1862, 40 & 4/100 acres in NE $\frac{1}{4}$ of NE $\frac{1}{4}$ of Section 12 in T36S & R23E. All of this land was located in the southwestern corner of present day Hardee County.



THOMAS H. ALBRITTON

roll call since he was on detached duty driving beef cattle for Capt. McKay, perhaps in the Fort Myers area. Military records of the 2nd United States Florida Cavalry show that George W. Albritton joined their organization on April 6, 1864 and he is shown as a refugee from the Confederacy. He is also listed as being killed at Cedar Keys on Nov. 24, 1864. These records do not dispute the family tradition but actually

Descendants state that Thomas H. Albritton and his two oldest sons, George W. and James Arthur, served in the Confederate army during the Civil War but no service records could be found for Thomas H. Albritton. But since many of the Florida Confederate military records are lost or contain only partial rosters, it is possible for Thomas to have been a member of one of the organizations. George Albritton (Albritton) joined Co. B of the 9th Florida Infantry of the Confederate forces on May 23, 1863 at Tampa, Fla., at the age of 18. Family tradition states that Thomas H. Albritton & his sons were serving in the Fort Myers area where Thomas was in charge of the horses and stables of the Confederate soldiers in that section of the state. It is believed that young George Albritton was kidnapped by several Union soldiers and carried to the prison on Dry Tortugas where he was kept till the end of the war. Confederate records for the 9th Fla. Infantry for the months of March & April 1864 show George Albritton absent from

support it. It was a very common event for young men to be captured & forced into service. It is very possible that while George was on duty driving cattle in southwest Florida, he was captured and forced to join the Union forces. It is possible that he later escaped (for George did return home after the war) and instead of being faced with embarrassment for allowing a Confederate to escape, George's commanding Union officer could have shown on his report that George had died.

Thomas H. Albritton owned several slaves prior to the Civil War and when the War was over, he gave them their freedom. Two of the young Negro boys stayed on with Thomas and helped him farm and handle his cattle & horses. One of them, Ike, later worked as a cook for Mr. Welles in Arcadia. Ike was member of the Mount Moriah Church at Joshua Creek as his tombstone in the Joshua Creek Cemetary states.

On September 7, 1867, Thomas H. Albritton registered five sets of marks and brands with the Manatee County Clerk of the Circuit Court: (1) Crop and half crop in each ear, brand "H", (2) Upper square in one ear and swallowfork and underbit in the other, brand "12", (3) Crop and underbit in one ear and two swallowforks in the other, brand "H", (4) Swallowfork and underslope in each ear, brand "H", and (5) Swallowfork and underslope in one ear and swallowfork and underbit in the other, brand "A".

The following article appeared in the July 26, 1959 issue of The Tampa Tribune: "It was on a Sunday in July of the 1870's. Thomas H. Albritton and family, along with their pioneer neighbors, had attended church services at the brush arbor in the Horse Creek settlement, later to be known as Castalia (now Lily).

"Having heard a fine and very long sermon by Parson R. M. Evans (Methodist circuit rider) and adjourning the services for dinner, the womenfolk began making preparations for spreading the meal. The men gathered to one side and were discussing events of the day.

"Thomas Albritton, talking to Morgan Mizell and Cicero Platt, said: "Boys, my bear grease and hog lard is gettin' mighty low. Supposin' we all go on a little hog hunt tomorrow on the prairie. The hogs along the hammocks ought to be in pretty good shape."

"Cicero agreed and the hunt was arranged for the next day. All were to meet at Mr. Albritton's house early the next morning.

"About the break of day, Cicero Platt and his brothers, Marion and Lewis, rode up on horseback with their 'glass-eye' leopard dog and cur dogs following them. About the same time up rode 'River Dan' Coker. Mr. Albritton and his sons, Asbury and James, had already saddled their horses and had their dogs tied.

"Since this hunt was to be strictly a hog hunt, they decided not to carry a gun as it would be in the way.

"Riding west on the prairie towards the hammocks, which were four or five miles away, the dogs jumped a panther, called in those days, tigers or 'painters'. This was near the present county line between Manatee & DeSoto. The chase was very short, the panther climbing a large live oak in a hammock.

"They all rode up, looked the panther over, and then decided that one of them should return to Morgan Mizell's and get a muzzleloader. The panther had to be killed, as pigs were his prey. Cicero left in a long gallop while others were standing guard until his return.

"In the meantime, the dogs jumped another panther in the hammock. This one refused to climb a tree. This panther backed up against a blown over stump in a tall palmetto patch and began fighting the dogs.

"Leaving Marion to guard the first panther, Thomas and his sons went to the dog-panther fight. From the yells of the dogs, it seemed to Thomas that the panther was getting the best end of the fight and would probably kill one or two of their dogs if something wasn't done

quickly. He shouted, "Boys, I'm not going to let that tiger kill my dogs!"

"With great courage and strength, he waded into the palmetto patch. Then with sledge-hammer fist blows, assisted by his bleeding dogs, he finally killed the panther. Opening his pocket knife, he cut the panther's throat and dragged him out of the palmetto patch.

"Soon after this fight Cicero arrived with the muzzle-loader & they killed the panther in the tree. They cut off the heads of both panthers, for which they would collect a bounty. The badly cut and bleeding dogs were treated with raw pine gum. There was no more hog hunting that day. All returned to Mr. Albritton's home for a grand meal. Vegetables from the cow-penned garden, grated corn pone, potato pone, cassava pone, buttermilk and curd, homemade rice with red eye gravy, corn syrup and honey for a sopping dessert.

"The oak and cabbage hammock where the bare-hand panther fight was made and the panther killed is to this day known as Tiger Hammock."

Thomas H. Albritton and other settlers of the Horse Creek area would either travel to Fort Meade or Fort Ogden to buy supplies which they needed. They would travel by horse & wagon and would camp several days at Boggess Landing, near Fort Ogden, waiting for the supply ships to come in. On one of these trips, when the supply ship pulled in, a young Cuban boy ran off of and away from the ship. One of the pioneers, a veteran of the Mexican War and who could understand Spanish, grabbed the boy and told him to get back on the ship. The boy began crying and begged not to be sent back to Cuba. He said that his father had killed his brother & threatened to kill him if he did not dig a grave & bury the dead brother. Thomas H. Albritton came up & through the interpreter, told the young Cuban boy that he could live with him & his family.

On July 22, 1871, Thomas H. and Francis Albritton were listed as charter members of Bethlehem Primitive Baptist Church located in Hillsborough County near the Polk County line. Mrs. Frances Waldron Albritton died on September 15, 1879 and was buried at the Lily Cemetery in present day Hardee County.

The 1880 Manatee County census shows Thomas H. Albritton residing with his three youngest children, Ann, Arcadia & Oregon.

On October 9, 1881 at Fellowship Chapel in Manatee County, Thomas married Mrs. Syndarilla (Syndrella) Byrd Hutchinson. Marriage was performed by Elder Andrew Kicklighter. Syndarilla was born Aug. 29, 1830 and was the widow of John M. Hutchinson, by which she had four children.

Thomas Albritton later moved to Polk County and settled in the Chicora community where he was living in 1892 when he applied for a pension based on his Indian War service. When the Bethlehem Primitive Baptist Church was reconstituted in Jan. 22, 1898, Thomas H. and Cindrella Albritton were charter members.

In 1906, The Punta Gorda Herald had this to say about Thomas: "A Polk County Patriarch". Mr. T. H. Albritton of Chicora, Polk Co., Fla., has 170 living descendants: 12 children, 80 grandchildren, 76 great-grandchildren and 2 great-great-grandchildren. He is as lively as a 17-year old boy, as active as a man of 30, full of good nature, genial and social in the highest degree, and it is said that he can give the Indian warwhoop loud enough to be heard two miles away."

Thomas H. Albritton died on February 19, 1907 at his daughter, Ann Carlton's home in Bowling Green. The body was brought by train to Gardner, and from Gardner, the body was transported by horse and wagon to Lily, where he was buried besides Frances Albritton, his second wife. Mrs. Syndrella Albritton died on August 27, 1915 and was buried at Bethlehem cemetery.

REFERENCES FOR ALBRITTON SKETCH: Bounty Land Application of T. H. Albritton, 1851 & 1856; Pension application of T. H. Albritton, 1892; Widow's pension application of Syndrilla Albritton, 1907; Thomas H. Albritton family Bible; Joshua Creek, Crewsville, Lily, Fort Ogden & Coker family cemeteries; Manatee Co. & Monroe Co. marriages; 1850 Columbia, 1860, 1870, 1880 & 1885 Manatee Census; Manatee County deed books; Manatee County Mark & Brands; Confederate military service records; Union military service records; James A. Albritton pension application for Union service; Interview with Mrs. Dora McLenon Johnston, granddaughter of Thomas H. Albritton who provided many stories about him and also contributed the photograph of him; Thanks to Mrs. Frances K. Hendry who assisted in locating & providing material from her mother, Mrs. Johnston; The Tampa Tribune, July 26, 1959, "Fearless Pioneer Waded Into Palmetto & Killed Panther With His Fists"; Albritton Family File, Polk County Historical Library, Bartow, Fla.; Article from Punta Gorda Herald, dated 1906, "A Polk County Patriarch"; "Albritton Family Settled in Manatee in the 1850's", The Tampa Tribune, July 12, 1959; Pioneers of Wiregrass Georgia, by Judge Folks Huxford, Vol II, page 20, 281; Vol. IV, page 354; Vol. V, page 4-5.



DE SOTO COUNTY: HISTORY OF FORT WINDER

Material collected, compiled & contributed by Mrs. Doris Nicholson of Arcadia, Florida.

Fort Winder is a small settlement in southwestern De Soto County, Florida, on State Road S-761. It was first settled around 1865 and was a station for cattle drives that were being driven down King's Highway to Charlotte Harbor to be loaded aboard ships called "lighters" and shipped to Cuba. The men who owned the cattle were paid in Spanish gold coins.

Fort Winder got its name when a group of soldiers led by a Capt. Winder, came south looking for stray bands of Indians. They made a camp near where Peace River Heights is today. They camped there several days building a circular dirt embankment for protection from possible attacks from the Indians. The camp was called "Fort Winder" and it is still called that today.

The early settlers had to travel by ox cart to Fort Ogden and Pine Level to get their supplies they did not raise on their farms. To get to Fort Ogden, they had to cross Peace River on a ferry as there was no bridge back then. Later, near the river, there was a general store, owned by a Mr. Gill. William Platt had a turpentine still near the railroad after it was built.

The settlers first went to the camp meetings at Pine Level for Church services. Then around 1875, the first school was built. It was also used on Sunday for Church services when a circuit riding preacher came thru. The first building burned about 1906 and was replaced with a new one the same year. Several years later the school was discontinued and the pupils were transferred to the Fort Ogden school.

The Fort Winder Methodist Church was organized in 1880. After a number of years, the membership transferred to the Methodist Church in Fort Ogden. The old building was wrecked and only the old bell remains today.

Some early settlers of Fort Winder were Mr. Albritton, David Mizell from Pine Level, William Barnwell from Alabama, Shubal Barnwell, William Platt, Ben Blackburn from north Fla., Mose Whidden, Isam Martin, William Jernigan from N.C., J. F. Beasley, Will Waterson, John Easters & others.

FREDERICK S. LANIER 1829-1875

Frederick S. Lanier was born in Bulloch County, Georgia in 1829, son of Benjamin Lanier and Sarah Pridgen. Some say his name was "James Frederick Lanier" but his Confederate service records, several census records and his probate records give it as Frederick S. Lanier. He grew up in Georgia and moved to Madison County in north Florida with his parents in the mid-1840's. He was still living at home with them in 1850.

Frederick Lanier married Miss Mary Susie Williams on Oct. 14, 1852 in Madison County. She was born in Stewart County, Georgia on October 20, 1830, daughter of James Williams. Their children:

1. James Madison Lanier, born September 13, 1853; died April 4, 1927; married on Sept. 22, 1872 in Manatee County, Florida Miss Sarah Marsella Youmans, daughter of James Madison Youmans and Martha L. Emanuel.
2. Annie Virginia Lanier, born 1855; died 1945; married Timothy Holloway on December 24, 1876 in Monroe Co., Fla. He was born Feb. 28, 1847.
3. Texana Lanier, born May 25, 1857; died July 23, 1936; married in Manatee County on September 18, 1878, Millard Fillmore "Phil" Yeomans (Youmans), son of James Madison Youmans and Martha L. Emanuel.
4. John Wesley Lanier, born April 16, 1858; died Dec. 8, 1913; married Cora Coppernoll.
5. Laura Jane Lanier, born 1861; married in Manatee County on September 5, 1886, John Baucom.
6. William Brantley Lanier, born August 16, 1865; died January 16, 1943; married in DeSoto County on June 25, 1892, Miss Annie Magnolia Evans, born in Louisiana on December 18, 1875.

Frederick S. Lanier was mustered into Company "D" of the 5th Regt. of Florida Infantry of the Confederate army as a Private on April 26, 1862, at Madison, Florida. Company muster rolls show that while on duty in Maryland he became sick. He was captured by Union forces on Sept. 12, 1862 at Frederick, Maryland. He was admitted into the USA General Hospital #1 at Frederick during the month of September. He was listed as among the prisoners of war sent for exchange from Fort Delaware, Del. to Aiken's Landing, Virginia on October 2, 1862. He was admitted to the General Hospital #23 at Richmond, Virginia on Oct. 6, 1862, later released and he rejoined his company. He was appointed first corporal in April 1863. Rolls for November & December 1863 show him absent on furlough; January & February 1864 show him absent without leave; rolls for February to June 1864 list him as deserted. But the rolls for September & October show him as joining from desertion - absence was due to sickness & probably poor communication between towns. Frederick Lanier was one of the prisoners of war surrendered to Brig. Gen. E. M. McCook by Maj. Gen. Sam Jones, CSA at Tallahassee, Florida on May 10, 1865. When Frederick signed his oath of allegiance to the United States on May 15, 1865 at Madison, Florida, his

description was given as six foot, dark hair, grey eyes & light complexion.

After the Civil War, Frederick S. Lanier and his family moved to south Florida settling in Manatee County in the Fort Ogden area (in present De Soto County), where they were listed in the 1870 census.

Frederick owned half interest in the schooner, "Laura", which he sailed between Fort Ogden and Key West, supplying the early settlers of south Florida with goods & provisions. The ship returned to port at Fort Ogden, in the latter part of 1875, from a trip to Key West without Mr. Lanier. Later when questioned about this, the crewmen said that Frederick fell off the ship on October 17, 1875 near Key West and was lost at sea. In the months that followed, it is said, that one crew member committed suicide and another one went crazy. Apparently, there was more to the incident that was revealed by the crew.

On June 15, 1876, Manatee County Judge E. M. Graham granted Letters of Administration on the estate of Frederick S. Lanier to Mrs. Mary S. Lanier. Z. King and W. Alderman were appraisers of the estate which included a yoke of oxen & cart, mare & colt, feather bed, kitchen furniture, farming tools and a mill.

The 1880 Manatee census shows the widow & children living adjacent to Phill Youmans who married Texanna Lanier and other members of the Youmans family.

Mary S. Lanier lived with various of her children at Fort Ogden, Punta Gorda, Fort Myers and Shell Creek. She applied for a Confederate pension based on the service of her husband. On one application in 1919, she stated she was living with her son, W. B. Lanier, at Charlotte Harbor.

Mrs. Mary Lanier died on June 20, 1923 at Cleveland, Fla. and was buried in the Fort Ogden Cemetery.

REFERENCES: Lanier Family by Louise Ingersoll, page 65; 1850, 1860 Madison Co., 1870, 1880 Manatee Co census; Death certificate of Mrs. Mary S. Lanier; Manatee, Monroe & De Soto County marriage records; William B. Lanier family Bible record; James M. Lanier family Bible record; Fort Ogden, Charlotte Harbor & Ortona Cemetery; Mr. Jesse Lanier, Shell Creek & now Arcadia, and Mr. Orton Lanier, Fort Ogden; Mr. Ron Metz who contributed



FREDERICK S. LANIER

the photograph of Frederick Lanier; Florida Confederate military records; Pension application of Mrs. Mary S. Lanier; Probate records of the estate of Frederick S. Lanier found in De Soto County;

LEE COUNTY: EARLY MARRIAGES

Marriage Book #1 Cont'd:

GROOM	BRIDE	DATE	MARRIED BY
Samuel Williams	Mrs. L. A. Nelson	29 Sept 1888	W.D.Fraser,NP
Marion H. Blount	Jenie Messer	22 Nov. 1888	J.A.Castell,Min.
Samuel Ellis	Mrs. Underhill	25 Dec. 1888	R.P.Thurber,JP
Thomas J. Evans	Miss E. K. Hibble	2 Jan. 1889	J.A.Castell,Min.
Albert Williamson	Lizzie Watts	13 Jan. 1889	W.P.Gardner,Min.
Frank Gomez	Miss Laura Young	14 Jan. 1889	Robt. Crawford
Thurston Johnson	Nellie Smith	11 Feb. 1889	John B. Serin ¹
William Green	Miss Mary Flint	3 Feb. 1889	Rev. Henry Messer
Marion Flint	Miss Lou Longwell	21 Feb. 1889	W.D. Fraser,NP
W. H. Henderson	Miss Frances Tippens	23 Feb. 1889	W.D.Fraser,NP
Francis M. Hendry	Miss Eleanor Murdock	24 Mar. 1889	C.E. Pelot ²
Horace Hadley	Miss Josephine C. Vredenburg	24 Mar. 1889	W.P.Gardner,Min.
Edgar J. Blount	Miss Fannie Wheeler	8 Apr. 1889	C.E. Pelot
Edward Parkinson	Mary Carol Verdier	Applied 19 Apr. 1889 ³	
James T. Weeks	Miss Helen Townsend	12 May 1889	W.D.Fraser
William A. Gandeas	Sarah Myers	29 Aug. 1889	C.E. Pelot
Frank O. Reckown	Jane Harris	20 May 1889	W.A. Roberts,NP
John H. W. Morgan	Susan Emma Whiddon	20 Sept 1889	Wm.E. Loper ⁴
Stephen McLenithan	Elizabeth Chestnutt	20 May 1889	W.R. Boyd,NP
Carl F. Roberts	Louisa V. Vridenburg	20 Nov. 1889	W.P. Gardner
Riley Harrell	Miss Henrietta Townsend	9 June 1889	W.D. Fraser

¹John B. Serin was Rector of St. Paul's Church, Key West, Fla.

²C. E. Pelot was Pastor of the M. E. Church South.

³Geo. S. Fitzhugh, Priest of Episcopal Church of Florida performed the marriage but no date was recorded.

⁴William E. Loper was County Judge.

W. S. Landrum	Miss Elizabeth Gatlin	3 June 1889	W.R. Boyd, NP
Wm. Aaron Flint	Miss Lizzie Richards	17 June 1889	W.D. Fraser
John Tucker	Martha Ellen Hogan	18 July 1889	W.D. Fraser
Tillit T. Henderson	Miss Frances R. Hendry	20 July 1889	C.E. Pelot
J. M. May	Miss Ednce Whidden	7 Aug. 1889	Rev. Henry Messer
J. J. Kirtlin	Miss Martha J. Carron	18 Aug. 1889	W.D. Fraser
John W. Williams	Lizzie Sapp (both colored)	19 Dec. 1889	M.T.D. Thomas
Madison T. Walker	Mary Lula Blake	25 Dec. 1889	C.E. Pelot
Stephen A. Boyd	Martha Tyce	7 Jan. 1890	Wm.D. Fraser
Joseph Santarra	Mary F. Santina	10 Jan. 1890	J.B. Quinlan
George W. Kennedy	Emily Lee	25 Jan. 1890	W.E. Loper
Wm. H. Lucky	Flossie P. Blount	22 Jan. 1890	W.H. Simmons
Charles F. Hamilton	Lula Allen	15 Feb. 1890	H.B. Frazee
S. A. Giles (colored)	Sarah Ann Elizabeth Russell (colored)	2 Mar. 1890	W.D. Fraser
George M. Omsby	Sallie Tomlinson	12 Mar. 1890	W.D. Fraser
James B. Stebbins	Francis Vivas	3 Mar. 1890	H.B. Frazee
C. A. Depuy	Julia Ehney	16 Mar. 1890	H.J. Miller
Henry Mobley	Lavinia Lewis	24 Apr. 1890	Robt. Mracham
Josephus Frazer	Lottie Redd	1 June 1890	M.E. Middleton
Richard Alder	Molly Sater	19 May 1890	Geo.S. Fitzhugh
Bartlett S. Foster	Ada Smith	2 July 1890	Geo.S. Fitzhugh
J. L. Williams	Safronia Curry	8 July 1890	R.A. Gillis, JP
Stephen B. Platt	Mary Alice Langford	1 Aug. 1890	Jas.B. McKinley
Ephraim Morgan	Helen Prescott	4 Oct. 1890	Jas.B. McKinley
Charles A. Schaeufele	Millie Florence Sater	8 Nov. 1890	Robt.B. Leak
Joel W. Corbitt	Florida M. Lee	8 Dec. 1890	W.D. Fraser
Thomas L. Green	Caroline Flint	4 Dec. 1890	Hugh S. English
Wm. P. Henley	Ida D. Brown	3 Feb. 1891	H.B. Frazee

FAMILY PUBLICATIONS

"BERRY PICKIN'" - A research aid for anyone working on the BERRY surname. \$6.00 per year; \$11.00 for 2 years; Sample copy \$1.75. Minimum of 30 pages per issue. Yearly index & free queries. Published in March, June, Sept. & Dec. by Mrs. Darla Jones.

"DIGGIN'FOR DAVIS" - A research aid for anyone working on the DAVIS surname. \$6.00 per year; \$11.00 for 2 years; Sample copy \$1.75. Minimum of 30 pages per issue. Yearly index and free queries. Published in Jan., Apr, July & Oct. by Mrs. Darla Jones.

"JONES JOURNEYS" - A research aid for anyone working on the JONES Surname. \$6.00 per year; \$11.00 for 2 years; sample copy \$1.75. Minimum of 30 pages per issue. Yearly index & free queries. Published in Feb., May, Aug., & Nov. by Mrs. Darla Jones.

"SMITH SAGAS" - A research aid for anyone working on the SMITH surname. \$6.00 per year; \$11.00 for 2 years; sample copy \$1.75. Minimum of 30 pages per issue. Yearly index & free queries. Published in March, June, Sept & Dec. Co-Editors: Mrs. Darla Jones and Mrs. Betty Pennington.

Send subscriptions for "SMITH SAGAS" to Mrs. Betty Pennington, 6059 Emery St., Riverside, Calif. 92509. Send subscriptions for the other three quarterlies to Mrs. Darla M. Jones, P. O. Box 366, Bullhead City, Arizona 86430.

HICKS NEWSLETTER - published monthly by Mrs. Virginia Hicks, Rt. 2, Box 207, Corning, Calif. 96021. This publication hopes to be a reliable genealogical source of material for the Hicks & their allied families. Annual subscription is \$6.50.

PEARCE FAMILY ORGANIZATION BULLETIN is prepared & distributed each year at the Pearce Family reunions by Mrs. Allen E. Pasteur, 4314 S.W. 22nd St., Ocala, Fla. 32670. It contains material and data on the Pearce & related families.

THOMAS TRACKS - Research bulletin for those with THOMAS surnames. Published quarterly in March, June, Sept & Dec. \$6.00 per year. Sample copy \$1.75. 25 pages per issue and free queries. Order from Mrs. Faye Davis, 6060 Humble St., Riverside, Calif. 92509.

KENNEDY KLUES - Research bulletin for anyone searching for the surnames of KENNEDY, KENEDY, KENADY, KENNADY, KENNEDAY, KENNADAY, CANADY, CANADAY, CANNADA and other variations of spelling. Published quarterly: Aug., Nov., Feb & May. \$6.00 per year. Free queries to subscribers. Sample copies \$1.75 each. Mrs. Betty L. Pennington, 6059 Emery St., Riverside, Calif. 92509.

KNIGHT LETTER - Communication for Knight family researchers - is now in its 8th year of publication and during that time has become the means of helping Knight family researchers contact each other. It is devoted exclusively to the name of Knight and its variations (such as McKnight, Knecht, Bouknight, etc). There is no advertising and queries are free. One year's subscription is \$5.00. Editor is Merle Ganier, 2108 Grace Street, Fort Worth, Texas 76111.

INDEX

- Addison, 2, 6, 21
 Addy, 1
 Albritton, 6, 7, 27, 28,
 29, 30, 31, 32
 Alder, 36
 Alderman, 4, 5, 7, 8, 9,
 23, 34
 Allen, 36
 Alston, 18
 Altman, 13
 Anderson, 1, 19
 Andrews, 9
 Ange, 6
 Arnold, 6, 7,
 Ashford, 12
 Ayers, 7
 Azelin, 6
 Bains, 8
 Baker, 2
 Ballard, 7
 Baldwin, 27
 Barber, 4
 Barkdoll, 20
 Barley, 7
 Barnes, 2
 Barnhill, 6
 Barnwell, 32
 Bartow, 16
 Bates, 6, 29
 Baucom, 33
 Beasley, 32
 Beecher, 4
 Bell, 6
 Bennett, 2
 Bethea, 7
 Bishop, 7
 Blackburn, 32
 Blackshear, 29
 Blake, 36
 Blount, 9, 16, 17, 35,
 36
 Boggess, 6, 7, 8
 Boney, 6, 7, 8, 9
 Booker, 7
 Boroughs, 3
 Bostick, 7
 Bowlegs, 5
 Bourguardey, 22
 Boyd, 9, 35, 36
 Boyt, 21
 Brackett, 25
 Bravo, 23, 24
 Branch, 6, 10, 21
 Brewer, 21
 Bridges, 6, 7, 8
 Bronson, 6
 Brown, 6, 7, 24, 25, 36
 Bowers, 25, 26
 Buchans, 1
 Buffrum, 22
 Bufforn, 9
 Bullock, 13
 Buntain, 2
 Burnett, 21
 Bush, 17
 Burnham, 19
 Byrd, 31
 Cail, 11
 Calhoun, 11
 Campbell, 5, 9, 13, 22
 Carlton, 7, 14, 18, 26
 27, 28, 31
 Carron, 36
 Carter, 9
 Carton, 7
 Cartwright, 1
 Casey, 8, 9
 Cason, 14, 26, 27, 28
 Castell, 35
 Cathren, 9
 Chancey, 6, 7
 Chandler, 5
 Channcey, 7
 Cheshire, 14
 Chestnutt, 35
 Childs, 25
 Clark, 1, 6
 Cleveland, 2
 Cochran, 2
 Collier, 6
 Coker, 6, 8, 19, 28, 30
 Collins, 6, 7, 9
 Cook, 3
 Cooper, 10, 21
 Coppernoll, 33
 Coram, 1
 Corbitt, 36
 Cornelius, 16
 Cothran, 2
 Cowart, 21, 24
 Craft, 9
 Craig, 7
 Crane, 15, 24, 25, 26
 Crawford, 8, 35
 Crews, 6, 7, 8, 9, 11,
 12
 Cross, 7, 9
 Crum, 17
 Cunningham, 22
 Curry, 3, 8, 36
 Daniels, 6, 11
 Daughtrey, 23
 Davidson, 17
 DeCoster, 1, 3
 Depuy, 36
 Deshong, 10
 DeVane, 20
 Draper, 6
 DuBois, 11
 Duncan, 19
 Dupont, 15
 Dupree, 18, 19
 Durance, 23
 Durrance, 4, 5, 7,
 13, 14, 15, 17
 Duval, 15
 Dykes, 13
 Easters, 32
 Ehney, 36
 Ellis, 35
 Emanuel, 33
 English, 36
 Evans, 30, 33, 35
 Farabee, 18
 Fitch, 3
 Fitzhugh, 35, 36
 Flint, 35, 36
 Foster, 36
 Foy, 7
 Fraser, 35, 36
 Frazee, 36
 Frazer, 36
 Frizell, 2
 Fugate, 13
 Futch, 8, 9
 Gage, 10, 21, 22
 Galispie, 6
 Gallagher, 24
 Galloway, 1
 Gandeas, 35
 Gardner, 35
 Garner, 6, 9, 27
 Garred, 6
 Garrison, 21
 Gaskins, 10
 Gates, 7, 8
 Gatlin, 36
 Gettis, 17
 Ghallager, 10
 Giddens, 2
 Gillespie, 26
 Gill, 6, 32
 Giles, 36
 Gillett, 13, 21
 Gilley, 8
 Gillis, 18, 36
 Glazier, 6, 7
 Gomez, 35
 Gough, 17, 18
 Graffe, 25
 Graham, 7, 34
 Grayson, 7
 Green, 21, 25, 35
 36
 Grice, 10
 Griggs, 3
 Grillion, 11
 Grise, 8
 Hadley, 35
 Hague, 13
 Hair, 4, 12, 13
 Hale, 7
 Hall, 7
 Hambleton, 24
 Hamilton, 2, 11, 12,
 13, 16, 36
 Hampton, 6
 Hand, 7
 Hanchey, 19
 Hancock, 1, 23
 Handcock, 6, 7
 Harp, 7
 Hansen, 6, 8
 Harman, 7
 Harrell, 8, 9, 35
 Harris, 6, 19, 35
 Harrison, 19
 Hawes, 15
 Hawkins, 6
 Hayman, 8, 9, 22
 Hays, 2
 Hearn, 11
 Helm, 6
 Henderson, 35, 36
 Hendry, 6, 7, 8, 9,
 14, 16, 32, 35,
 36
 Henley, 36
 Herrin, 18
 Hibble, 35
 Hilliard, 5
 Hindman, 2
 Hogan, 36
 Hollingsworth, 22
 Holloway, 1, 33
 Holmes, 4
 Hooker, 7, 13, 24,
 27
 Houston, 15
 Howard, 19, 22
 Howell, 18, 22
 Hull, 6, 7, 8, 9, 20
 Humphries, 9
 Hunter, 8
 Hutchison, 7
 Hutchinson, 31
 Huxford, 15, 32
 Iliff, 26
 Ingersoll, 34
 Ivey, 27, 28
 Jackson, 11, 12, 23
 Jacobs, 7

Jernigan, 4, 15, 32
 Johnson, 6, 7, 19, 35
 Johnston, 9, 32
 Jones, 8, 10, 23, 27, 28, 33
 Jordan, 9
 Jordon, 10
 Keen, 6, 7, 13, 15
 Kelly, 11
 Kendrick, 16
 Kennedy, 36
 Key, 6, 7
 Kersey, 19
 Kicklighter, 7, 31
 King, 34
 Kirtlin, 36
 Knight, 1, 2, 3
 Krohn, 18
 Lamb, 8
 Land, 14
 Landrum, 36
 Langford, 7, 28, 36
 Lankford, 22
 Lanier, 33, 34
 Larrison, 2, 3
 Lataim, 7
 LaTaste, 10
 Leak, 36
 Lee, 2, 6, 7, 8, 26, 36
 Lennard, 6
 Lesley, 5
 Leslie, 8
 Lesly, 23
 Lewis, 14, 36
 Limberg, 18
 Livingston, 12
 Lockett, 5
 Lockwood, 23
 Lockler, 27
 Lofton, 5
 Longwell, 35
 Loper, 35, 36
 Lopez, 6
 Lucky, 36
 Macy, 22
 Magbee, 24
 Mahaffey, 2
 Malista, 11
 Mann, 7
 Manning, 13
 Mansel, 9
 Marshall, 15
 Martin, 15, 32
 Mathis, 10
 May, 36
 McAarty, 11
 McAulay, 17
 McCarty, 21
 McEwen, 6
 McCook, 33
 McClelland, 7
 McCollough, 24, 25
 McGlown, 9
 McHargue, 1
 McIntosh, 11
 McKay, 29
 McKinney, 26
 McKinley, 36
 McLellan, 9
 McLeod, 2, 6, 11, 13, 19
 McLenon, 28, 32
 McLenithan, 35
 McMullen, 11
 McNeill, 22
 Mercer, 21, 22, 23
 Messer, 3, 9, 12, 35, 36
 Metz, 34
 Middleton, 36
 Miller, 2, 8, 9, 18, 24, 36
 Mills, 14
 Mitchell, 2, 16
 Mizell, 4, 6, 22, 28, 30, 32
 Mizelle, 16
 Mobley, 36
 Montesdeoco, 11
 Moody, 7
 Morgan, 5, 35, 36
 Mracham, 36
 Murdock, 35
 Murphy, 11, 14, 26, 27, 28
 Myers, 24, 28, 35
 Neal, 18
 Nelson, 2, 6, 35
 Newton, 12
 Nicholson, 1, 32
 Nobles, 18, 19
 Norris, 6, 7
 North, 7
 Odum, 1
 Omsby, 36
 Padgett, 4
 Papy, 11
 Parker, 4, 5, 12
 Parkinson, 2, 35
 Parrish, 8
 Patrick, 12, 15
 Patten, 7
 Pearce, 4, 5, 22
 Peeples, 24
 Pelot, 35, 36
 Pennington, 23
 Petars, 6
 Phillippe, 22
 Pierce, 9
 Platt, 6, 12, 29, 30, 32, 36
 Polk, 15
 Post, 23
 Powell, 8, 9
 Powers, 6, 7
 Prescott, 8, 36
 Pretz, 24
 Prevatt, 10
 Pridgen, 33
 Prudence, 11
 Pylant, 8, 9
 Quinlan, 36
 Raglin, 9
 Ramsey, 1
 Raulerson, 4, 5
 Reckown, 35
 Redd, 6, 7, 8, 36
 Revell, 18
 Reynolds, 9
 Richards, 36
 Riggs, 9, 23
 Roberts, 1, 2, 3, 6, 17, 18, 19, 20, 35
 Robertson, 12, 13
 Robinson, 7, 12, 26
 Robles, 10, 23
 Rogers, 6, 19
 Rowe, 6
 Russell, 36
 Rutledge, 17
 Sandrich, 11
 Santarra, 36
 Santina, 36
 Sapp, 36
 Sater, 36
 Sauls, 7
 Saunders, 3, 6
 Sawyer, 7
 Schaeufele, 36
 Seal, 22
 Serin, 35
 Seward, 16
 Shaw, 13
 Sheldon, 15
 Sheppard, 15
 Shephard, 22
 Shiver, 4
 Sias, 3
 Sikes, 8
 Simmons, 6, 7, 9, 19, 21, 24, 36
 Simpson, 15
 Skipper, 21
 Sloan, 20, 23
 Smith, 7, 8, 24, 35, 36
 Snider, 22, 24
 Snodgrass, 7
 Sparkman, 6, 9, 10, 21, 23, 24
 Speer, 15
 Spriggs, 1
 Stafford, 10, 11
 Standford, 1
 Stanford, 9, 10
 Starke, 15
 Stebbins, 36
 Stephens, 3, 6, 7, 11, 13, 19, 20, 24
 Stevens, 25
 Stewart, 7, 19, 25
 Story, 25
 Strickland, 7, 27
 Stroud, 2
 Suggs, 25
 Sullivan, 25
 Summerlin, 16
 Sumroles, 25
 Surrency, 18
 Swain, 4
 Sylvester, 27, 29
 Tanner, 9
 Taylor, 4, 7, 9
 Tedder, 25
 Thally, 10
 Thigpen, 6, 12, 25
 Thigpin, 25
 Thomas, 5, 8, 12, 13, 15, 36
 Thompson, 6, 8, 17
 Thosly, 10
 Thurber, 35
 Thurman, 25
 Tillet, 7, 12
 Tillis, 24
 Tippett, 6
 Tippens, 35
 Tippins, 9, 13
 Tomlinson, 36
 Tompkins, 25
 Towler, 1
 Townsend, 10, 35
 Troutman, 11
 Tucker, 6, 8, 25, 28, 36
 Turner, 8, 9
 Tyce, 36
 Tyner, 26
 Underhill, 4, 5, 22, 24, 27, 28, 35
 Vanderipe, 7
 VanLandingham, 3
 Varn, 16
 Verdier, 35
 Vickers, 2
 Vivas, 36
 Vredenburg, 35

Vridenburg, 35
Wade, 1
Wadsworth, 12
Wainwright, 27
Walden, 3
Waldron, 8, 9, 27, 28, 29, 31
Walker, 4, 5, 6, 21, 26, 28, 36
Wallane, 26
Ward, 26
Washington, 7
Waters, 16
Waterson, 1, 32
Watson, 15
Watts, 35
Weeks, 6, 23, 35
Welles, 30
Wheeler, 35
Whiddon, 22, 24, 35
Whidden, 6, 7, 8, 13, 14, 15, 22
28, 32, 36
Whitaker, 7
Whitehurst, 11
Wiggins, 9
Wilkins, 7, 18
Wilkerson, 7
Wilder, 2, 8, 9
Wiley, 8
Willingham, 5
Willis, 2, 3
Williams, 6, 7, 8, 18, 33, 35, 36
Williamson, 35
Wilson, 1, 8, 9, 11
Winder, 32
Wingate, 7, 12
Womack, 14
Wood, 8
Woods, 10
Wordehoff, 21
Worth, 6
Wright, 4
Wyatt, 6, 7, 8
Yeomans, 33
Youmans, 6, 33, 34
Young, 35
Youngblood, 18
Younglove, 6

