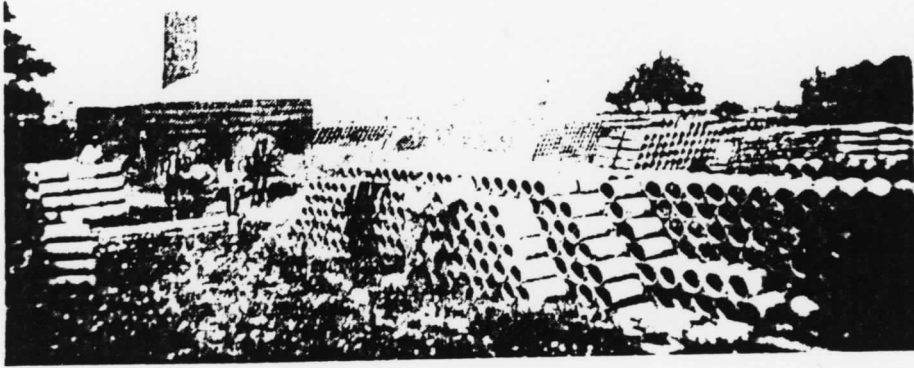


Turn Back the Calendar:

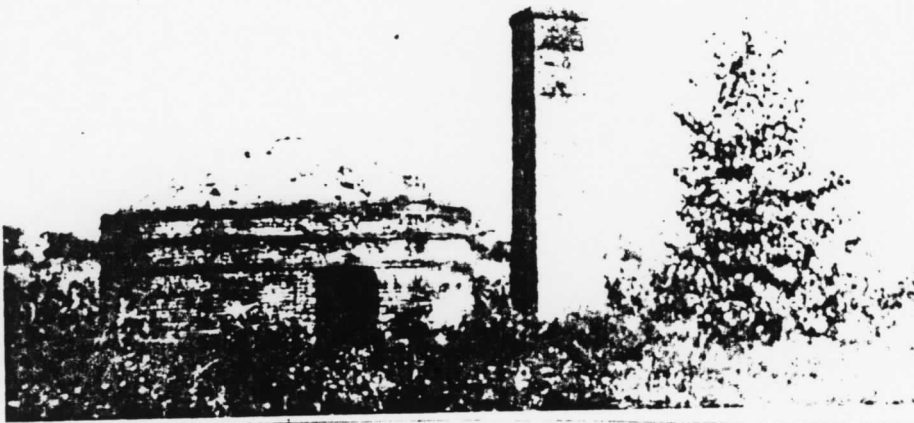
PHOTOS COURTESY OF
MARTIN DAVIS

Daleville Tile Factory—1886

PICTURE TAKEN ABOUT 1902



THE TILE FACTORY WAS
ON (MAIN) SOUTH WALNUT ST.
ON THE OWEN BIDDLE
PLACE WHICH LATER BECAME
MILO OLIVER HOME, WHICH
IS ALSO GONE NOW.



HERE IS A KILNS WHERE
THE TILE WAS FIRED.



THE BRICK COMPANY WAS
LOCATED IN THE SOUTH-
WEST CORNER OF TOWN.
ALONG THE MIDLAND R.R.
WHAT IS NOW THE JUNCTION
OF EDWARDS STREET AND
HIGHWAY 67.

*Daleville Brick Company
About 1902*



DALEVILLE BRICKS — Horticulturist Martin Davis displays two souvenirs he has kept from Daleville's brickmaking past. The dark one at the top, initialed with DBC is a product of the Daleville Brick Company. The light colored brick is a product of the Daleville Sand and Lime Brick Company. The brick factories were located on Indiana Highway 67, one on Walnut Street and the other on Edwards Street. The clay, sand and lime in the area furnished raw material for the brick-making.