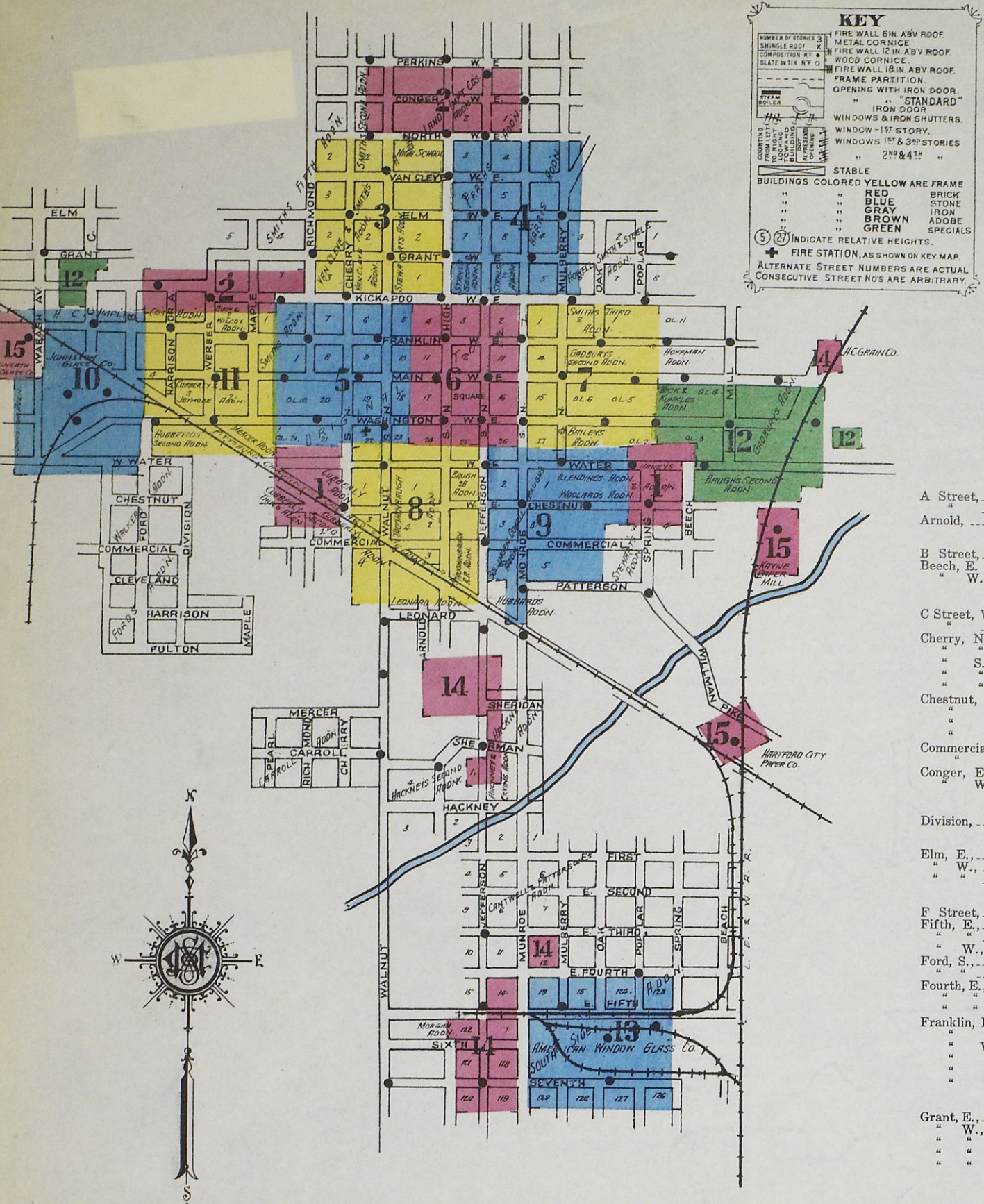


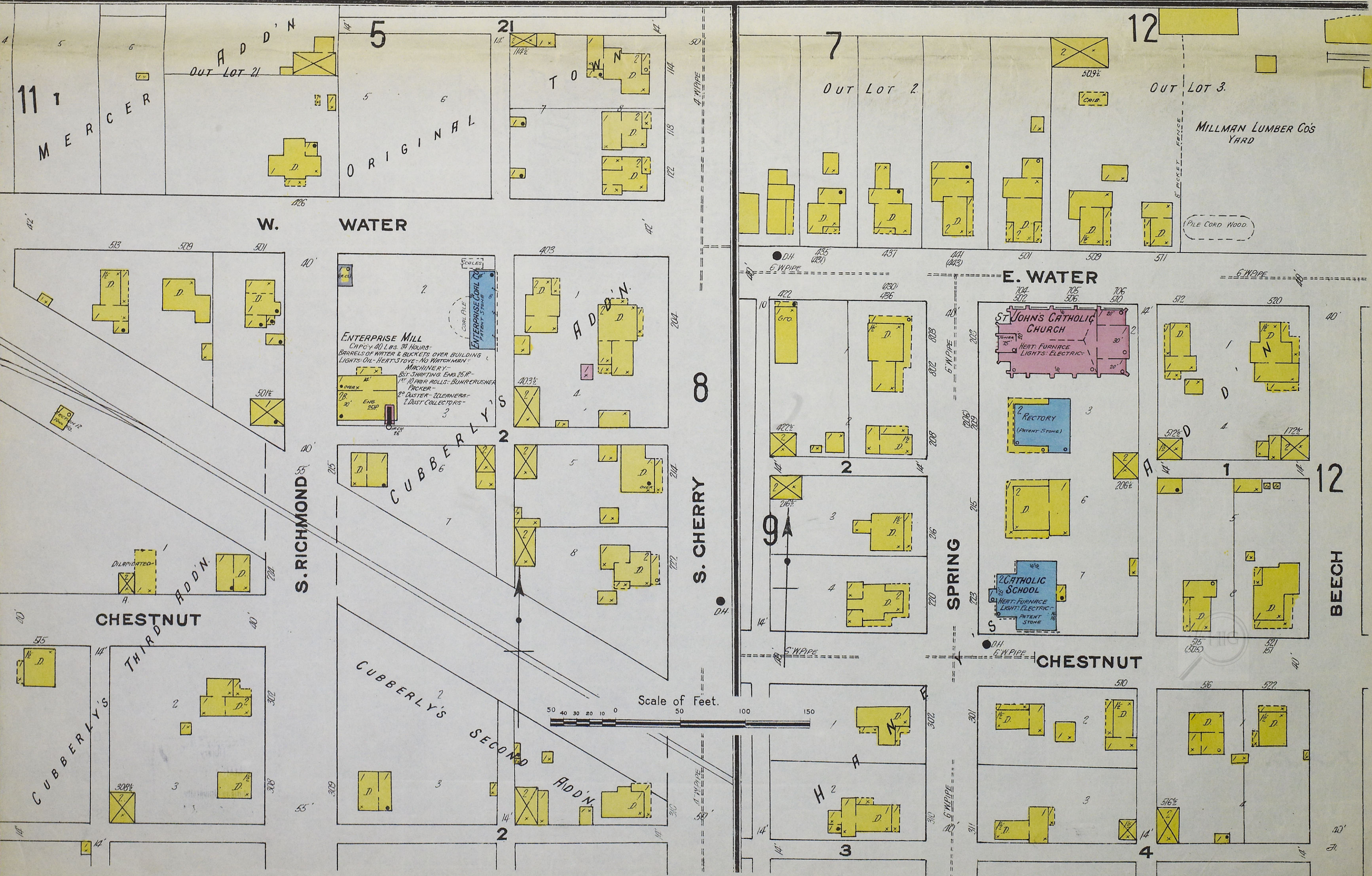


WATER FACILITIES
Direct pressure system of Water Works, owned by city.
Reservoir, capacity 325,000 gals., at pumping station supplied from wells.
Two Gordon compound duplex pumps, size 10 1/2 x 10 1/2 - 16.
Capacity one million gals. per 24 hours.
2 Miles water mains laid in 1895.
Fire pressure 120 lbs. - average daily consumption 225,000 gals.
FIRE DEPT
Volunteer - 18 men - paid for each fire.
One hose wagon driver, sleeps in hose house.
Fire alarm by telephone & whistle at Pumping Station.
One two horse hose wagon, one one horse M & L truck.
One hose reel - two horses - 3000' 2 1/2 Rubber lined hose, in good condition.
Principal streets paved with brick - Public lights electric.

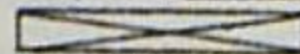
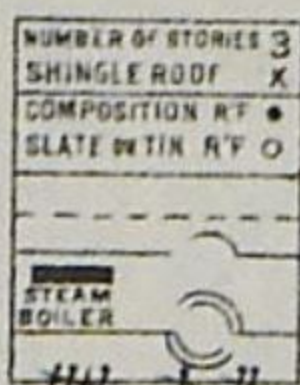


INDEX

Table with columns for street names and sheet numbers. Lists streets from A to W and their corresponding sheet numbers for reference.



KEY



FIRE WALL 6 IN. ABV ROOF.
 METAL CORNICE
 FIRE WALL 12 IN. ABV ROOF.
 WOOD CORNICE.
 FIRE WALL 18 IN. ABV ROOF.
 FRAME PARTITION.
 OPENING WITH IRON DOOR.
 " " "STANDARD"
 IRON DOOR
 WINDOWS & IRON SHUTTERS.
 WINDOW - 1ST STORY.
 WINDOWS 1ST & 3RD STORIES
 " 2ND & 4TH "

STABLE

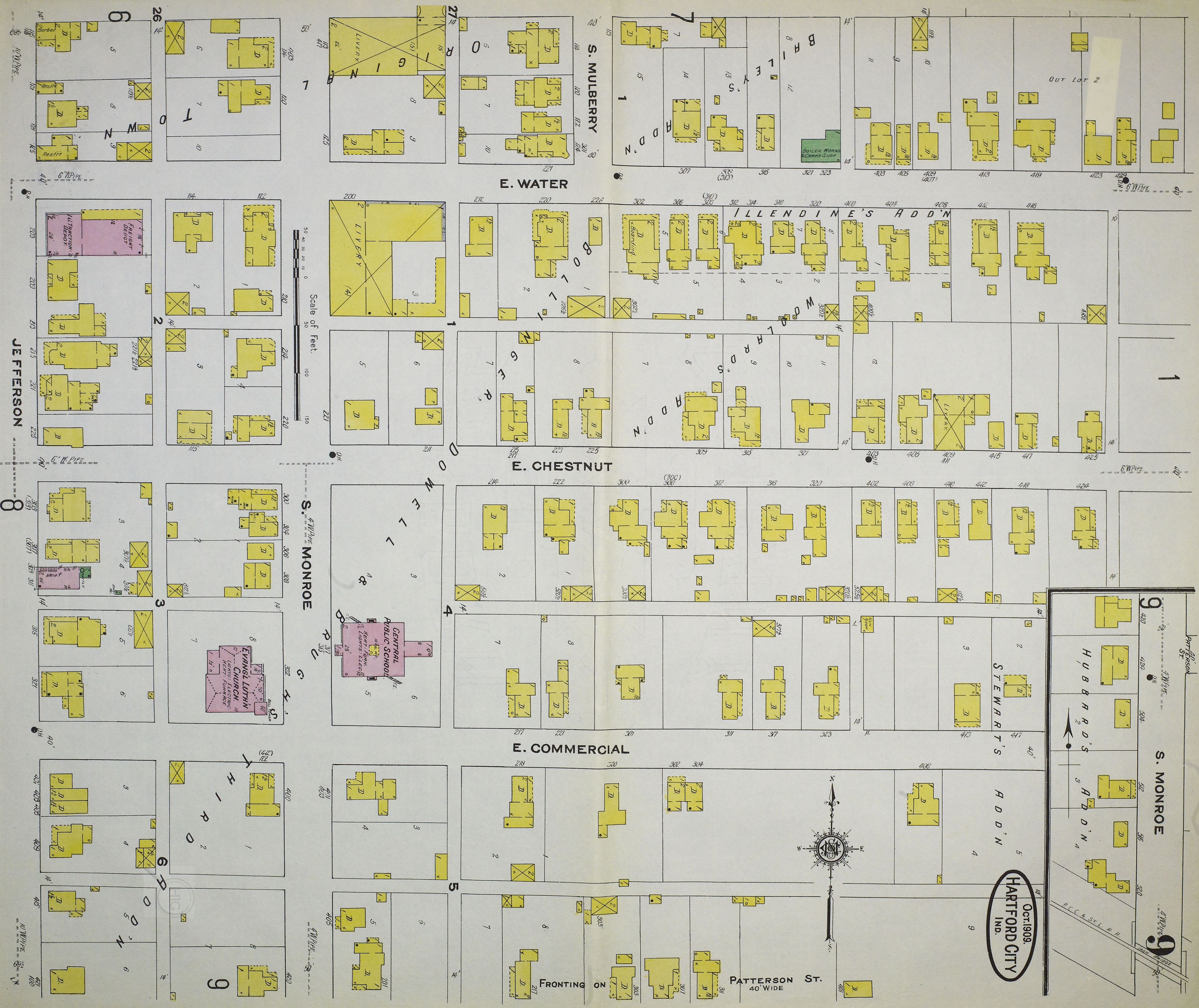
BUILDINGS COLORED YELLOW ARE FRAME

"	"	RED	BRICK
"	"	BLUE	STONE
"	"	GRAY	IRON
"	"	BROWN	ADOBE
"	"	GREEN	SPECIALS

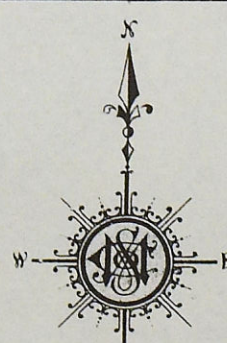
⑤ ②⑦ INDICATE RELATIVE HEIGHTS.

⊕ FIRE STATION, AS SHOWN ON KEY MAP.

ALTERNATE STREET NUMBERS ARE ACTUAL
 CONSECUTIVE STREET NO'S ARE ARBITRARY.



Oct. 1909.
HARTFORD CITY
 IND.



Scale of Feet
 0 50 100 150

JEFFERSON

E. WATER

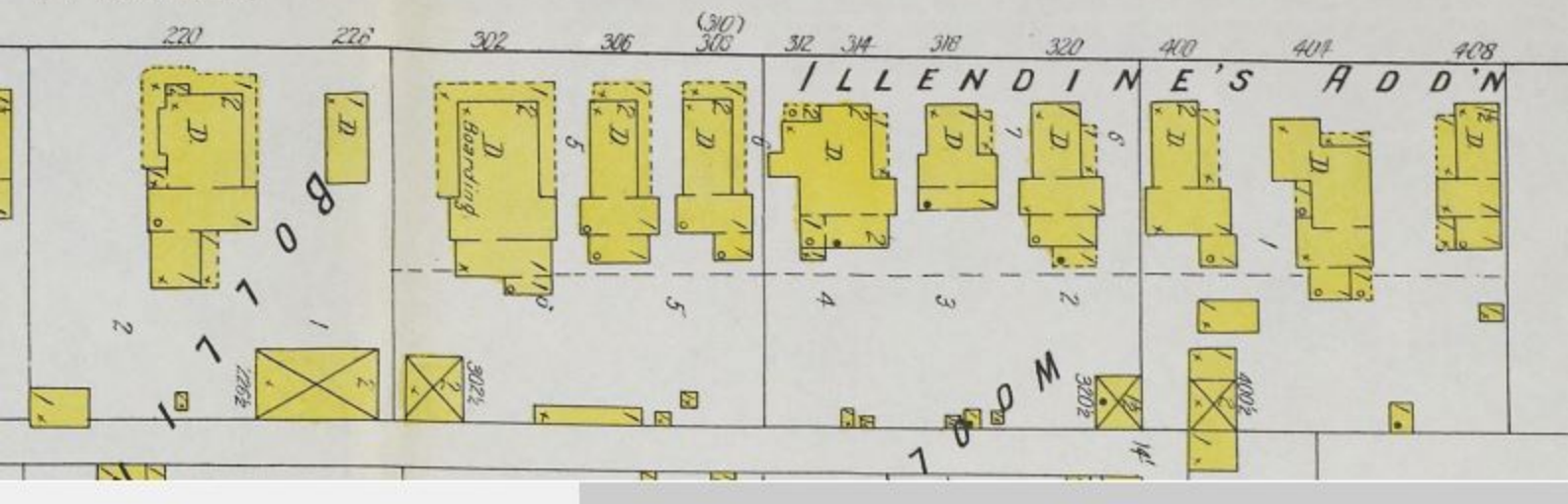
E. CHESTNUT

E. COMMERCIAL

S. MONROE

FRONTING ON PATTERSON ST. 40' WIDE

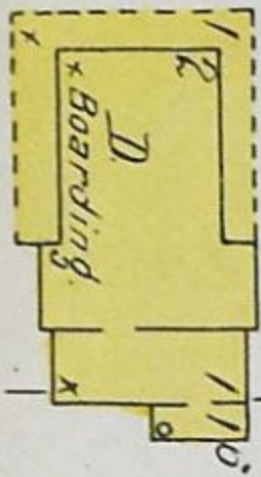




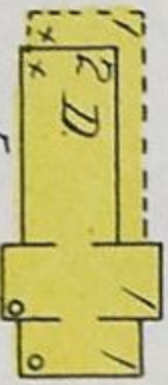
302

306

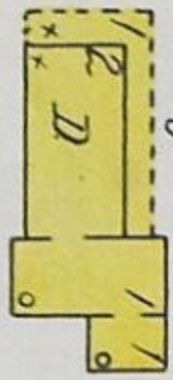
(310)
308



5



5



3022

