

Hartford City, Ind. Dec. 1892. I have examined this Survey, made by the Sanborn-Perris Map Co. Limited of New York, and find same complete and accurate.

Enos Cole City Local Board.

FAIR GROUNDS

NOTE: STREETS PAID GRADES LEVEL IN TERRITORY COVERED BY THIS MAP. LIGHTS; NAT. GAS.

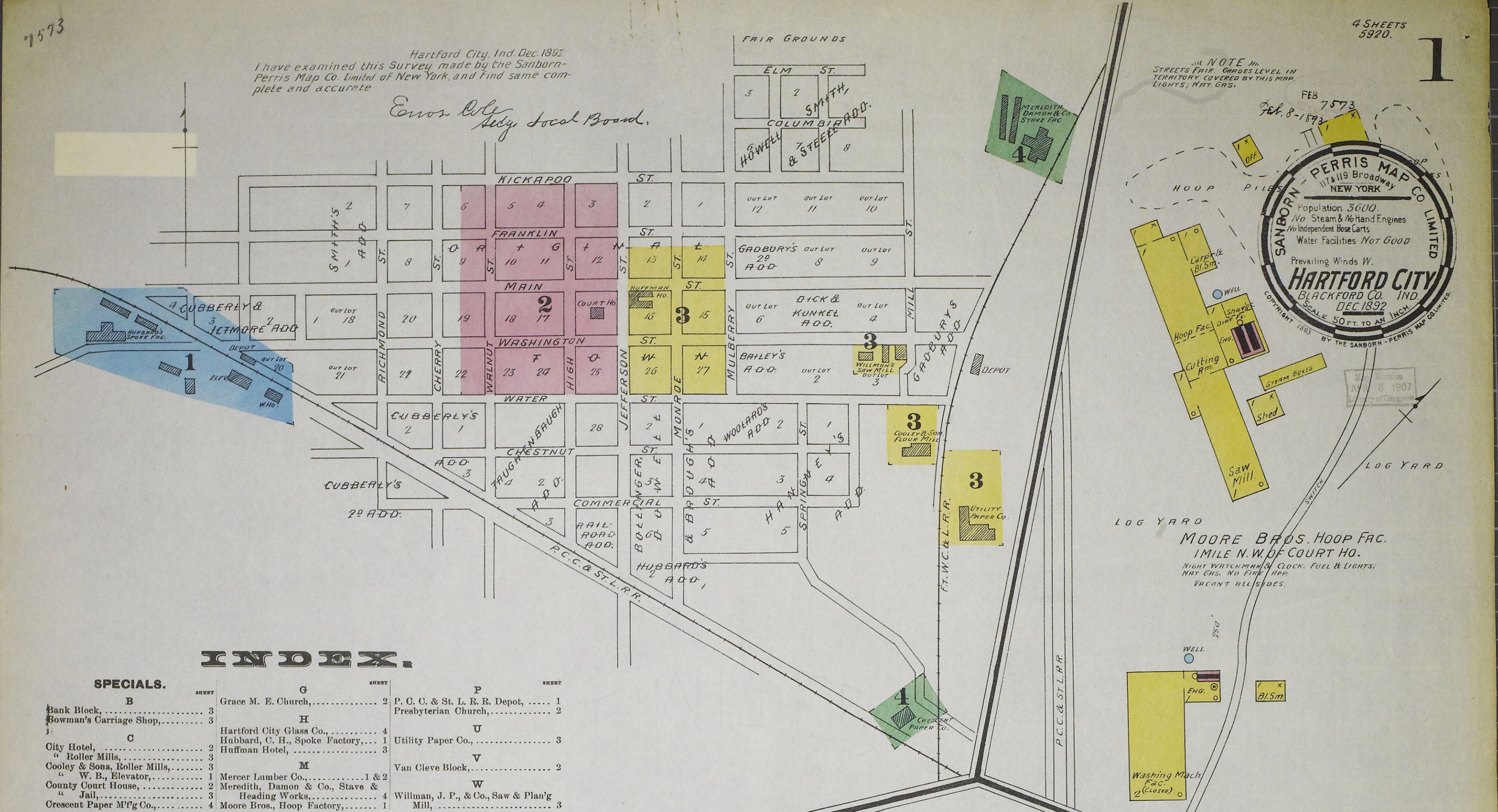
FEB 7573  
Feb. 8-1893

**PERRIS MAP CO. LIMITED**  
NEW YORK  
117 & 119 Broadway

Population 3600  
No Steam & No Hand Engines  
No Independent Horse Cars  
Water Facilities NOT GOOD

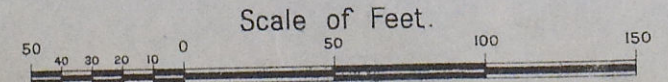
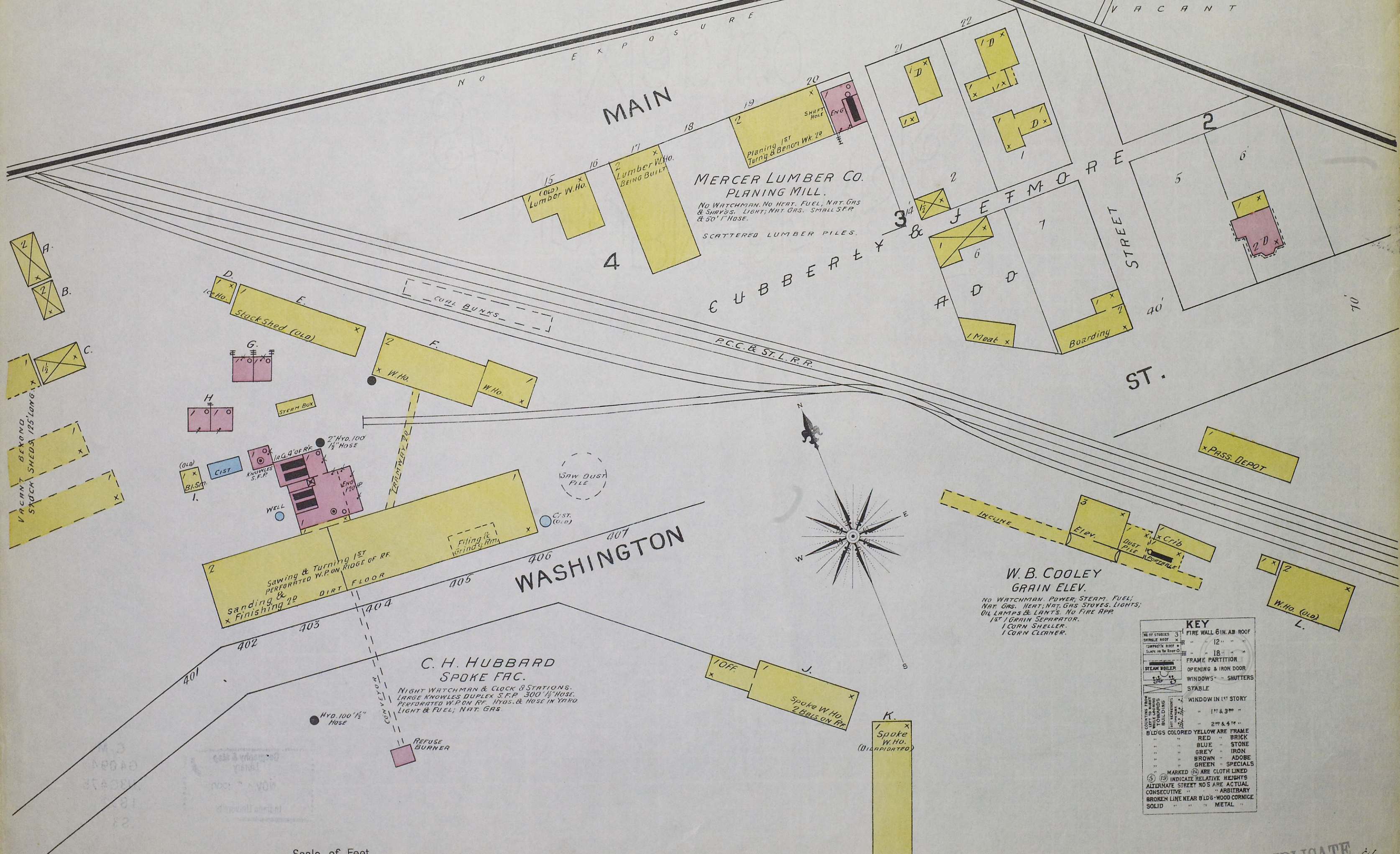
Prevailing Winds W.  
**HARTFORD CITY**  
BLACKFORD CO. IND.  
DEC 1892  
SCALE 50 FT. TO AN INCH.

COPYRIGHT 1893 BY THE SANBORN-PERRIS MAP COMPANY



### INDEX.

SPECIALS.	ALPHABET	ALPHABET	ALPHABET
Bank Block, . . . . .	B	Grace M. E. Church, . . . . .	G
Bowman's Carriage Shop, . . . . .	3	Hartford City Glass Co., . . . . .	H
City Hotel, . . . . .	C	Hubbard, C. H., Spoke Factory, . . . . .	H
Roller Mills, . . . . .	3	Huffman Hotel, . . . . .	3
Cooley & Sons, Roller Mills, . . . . .	3	Mercer Lumber Co., . . . . .	M
W. B., Elevator, . . . . .	1	Meredith, Damon & Co., Stave & . . . . .	M
County Court House, . . . . .	2	Heading Works, . . . . .	H
Jail, . . . . .	3	Moore Bros., Hoop Factory, . . . . .	M
Orescent Paper Mfg Co., . . . . .	4	Willman, J. P., & Co., Saw & Plan'g . . . . .	W
		Mill, . . . . .	3
		P. C. C. & St. L. R. R. Depot, . . . . .	P
		Presbyterian Church, . . . . .	P
		Utility Paper Co., . . . . .	U
		Van Cleve Block, . . . . .	V



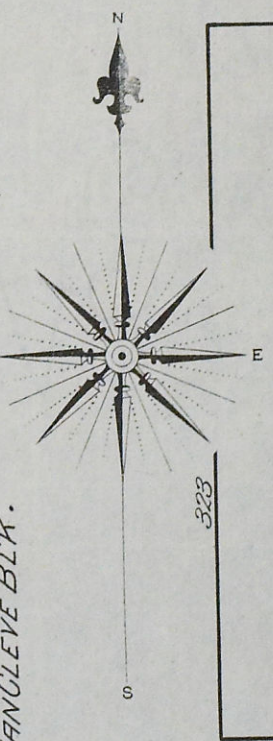
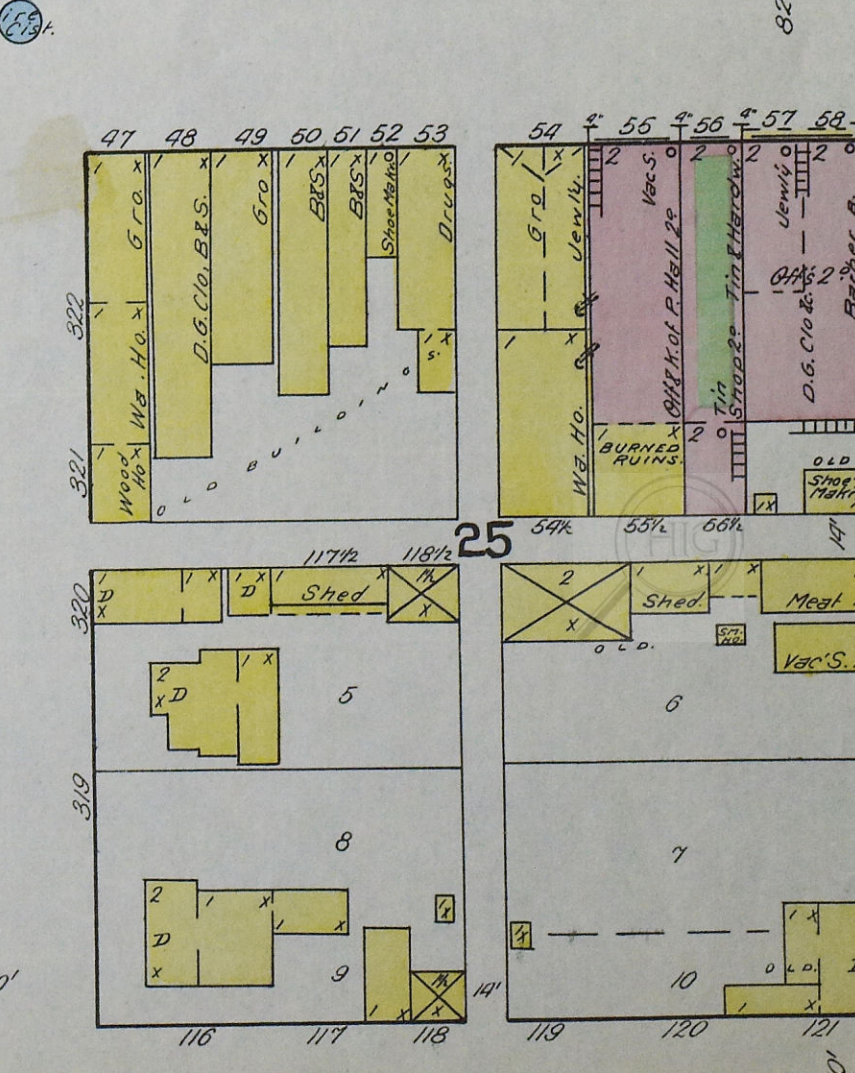
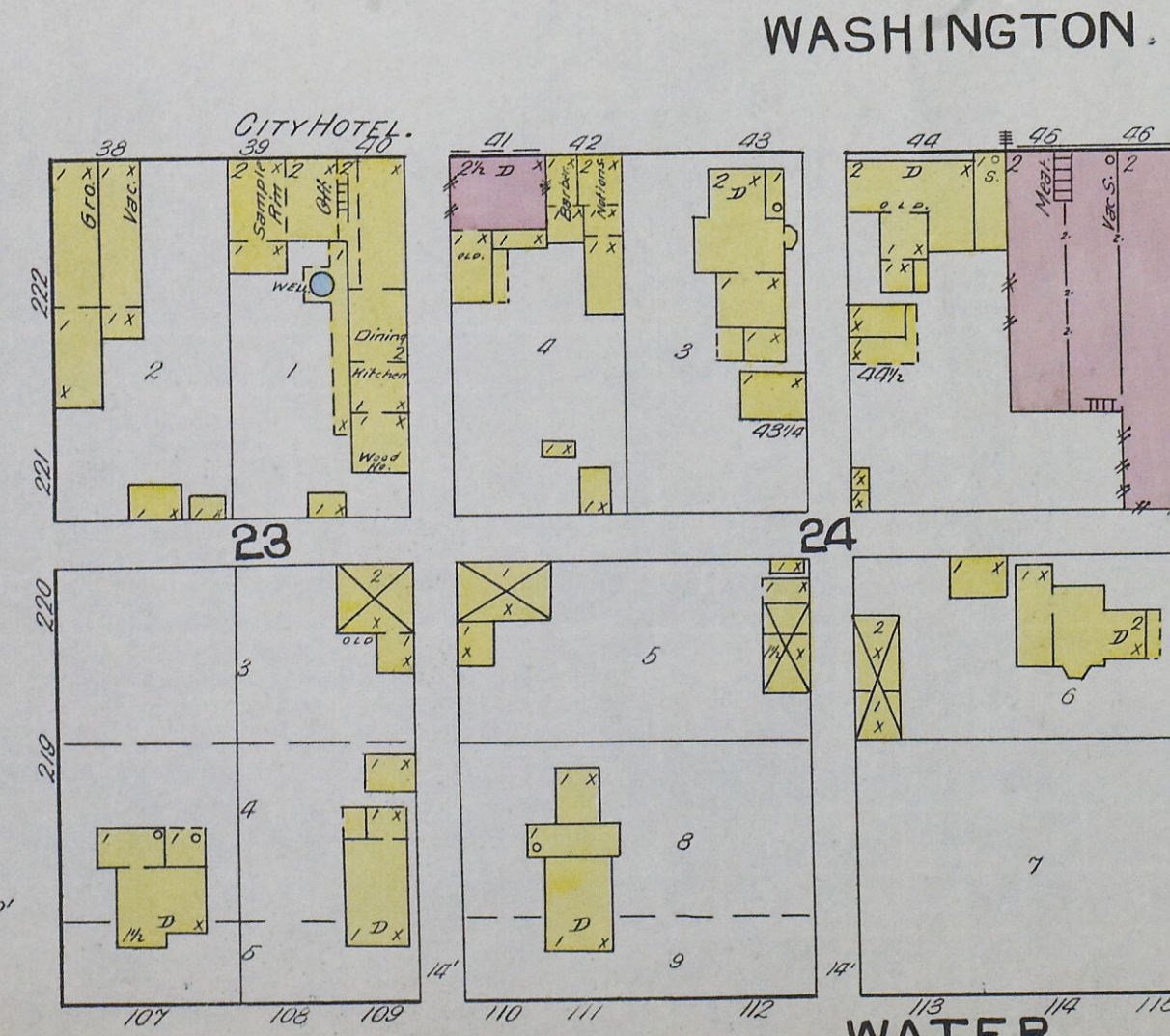
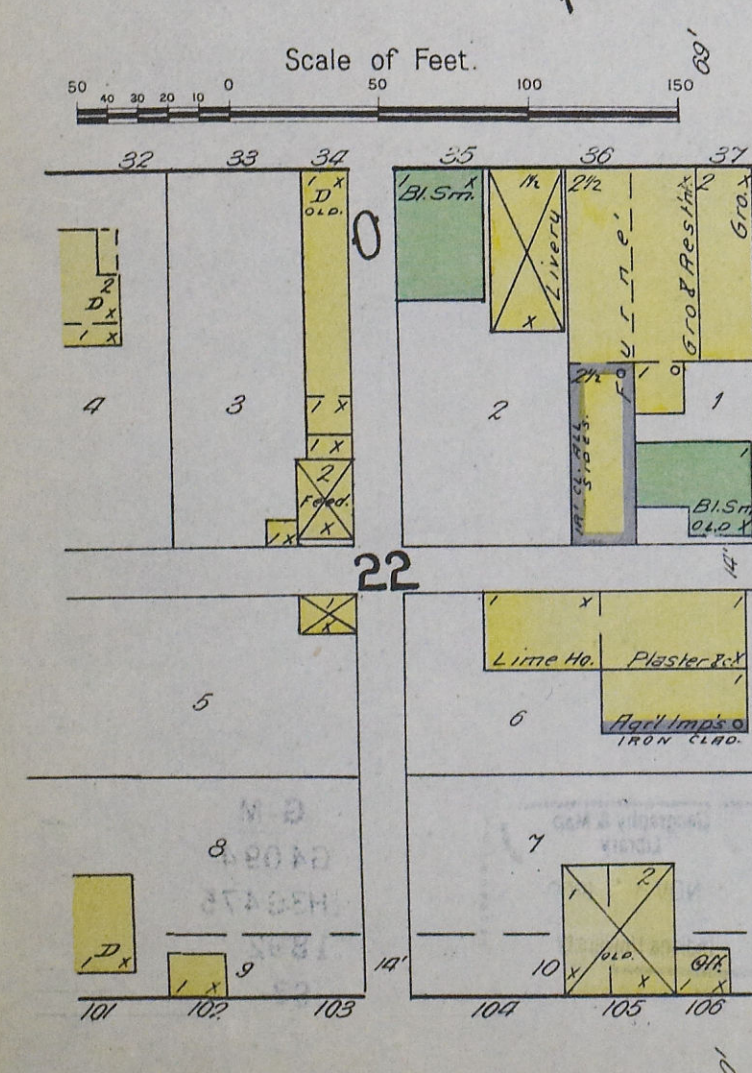
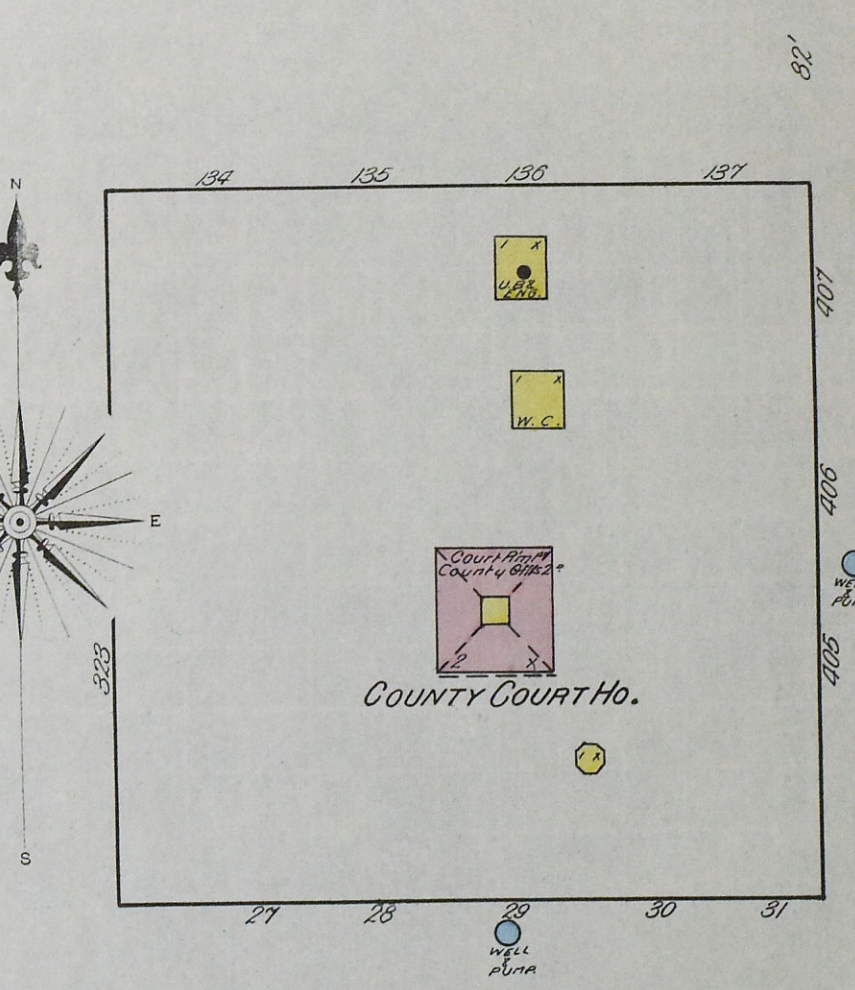
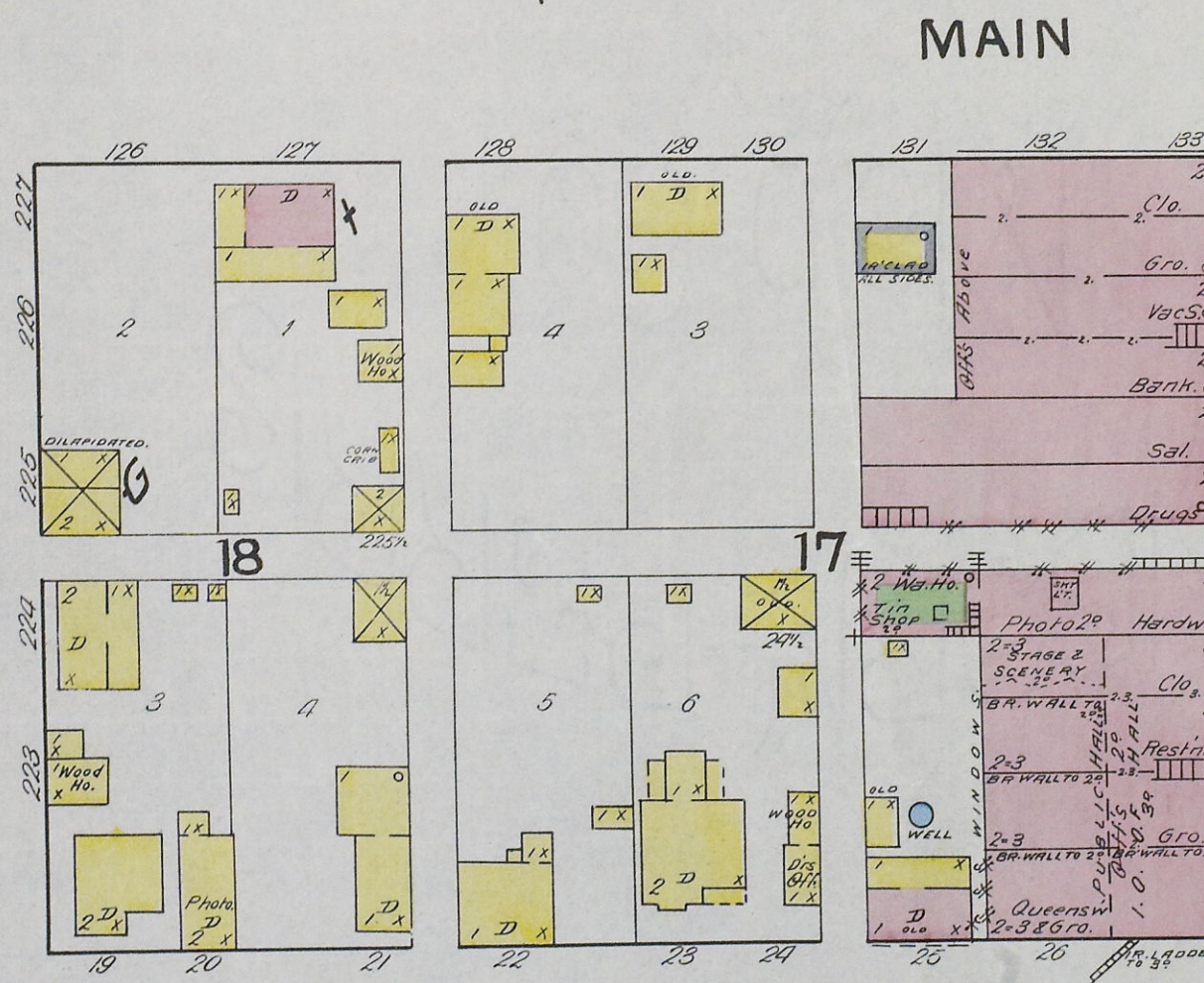
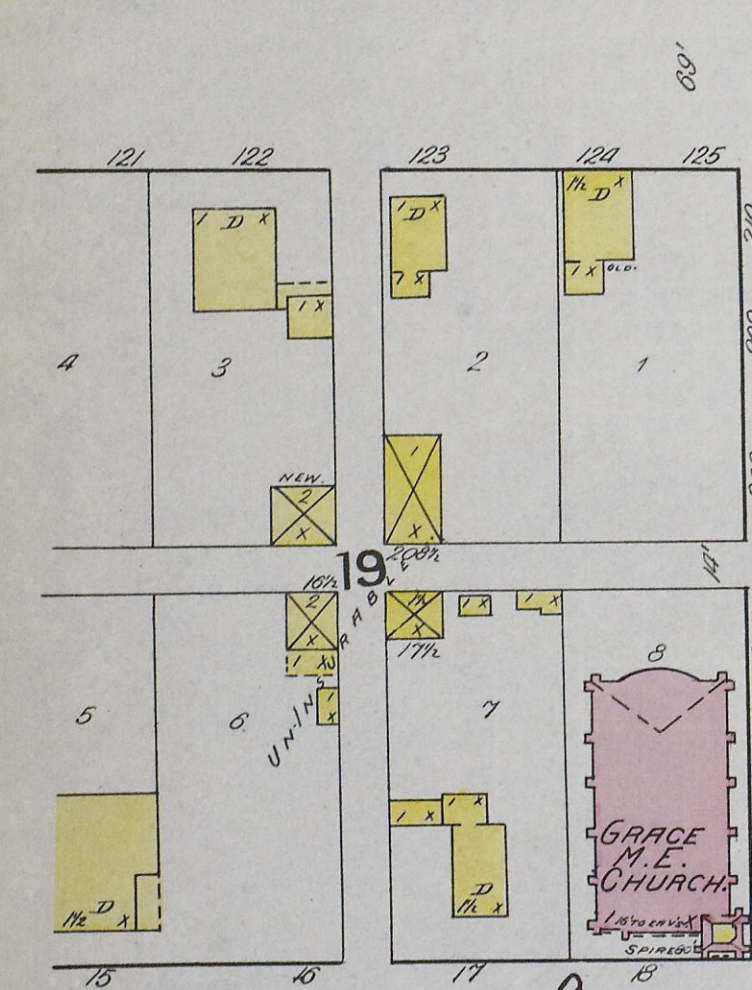
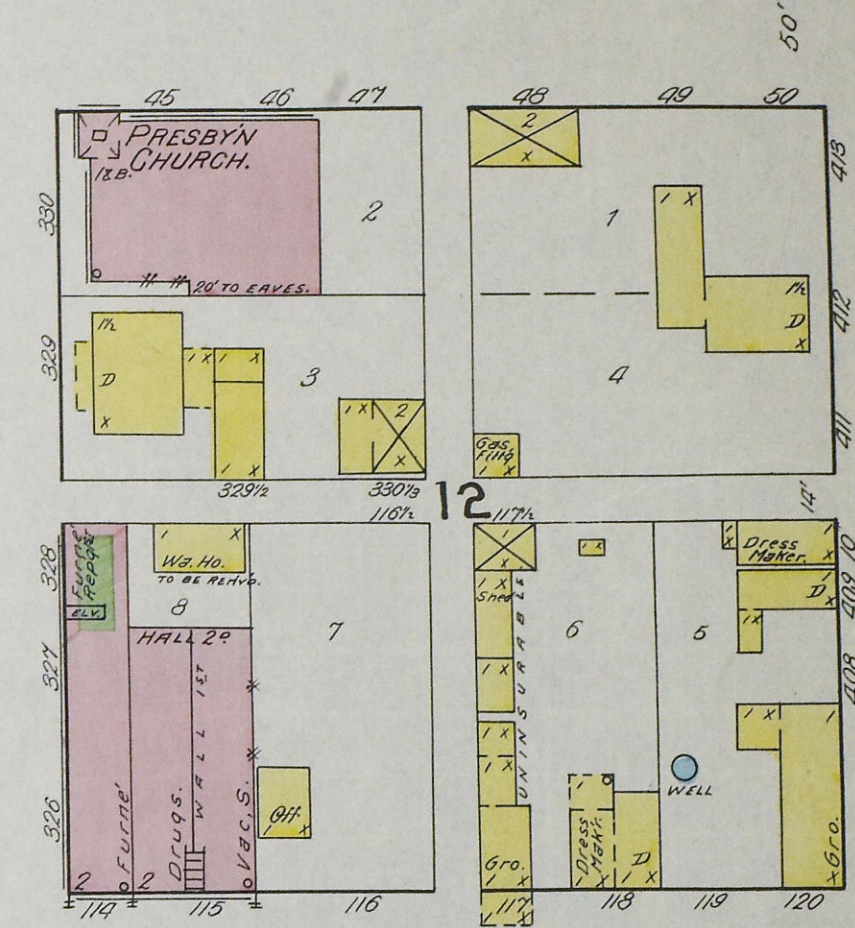
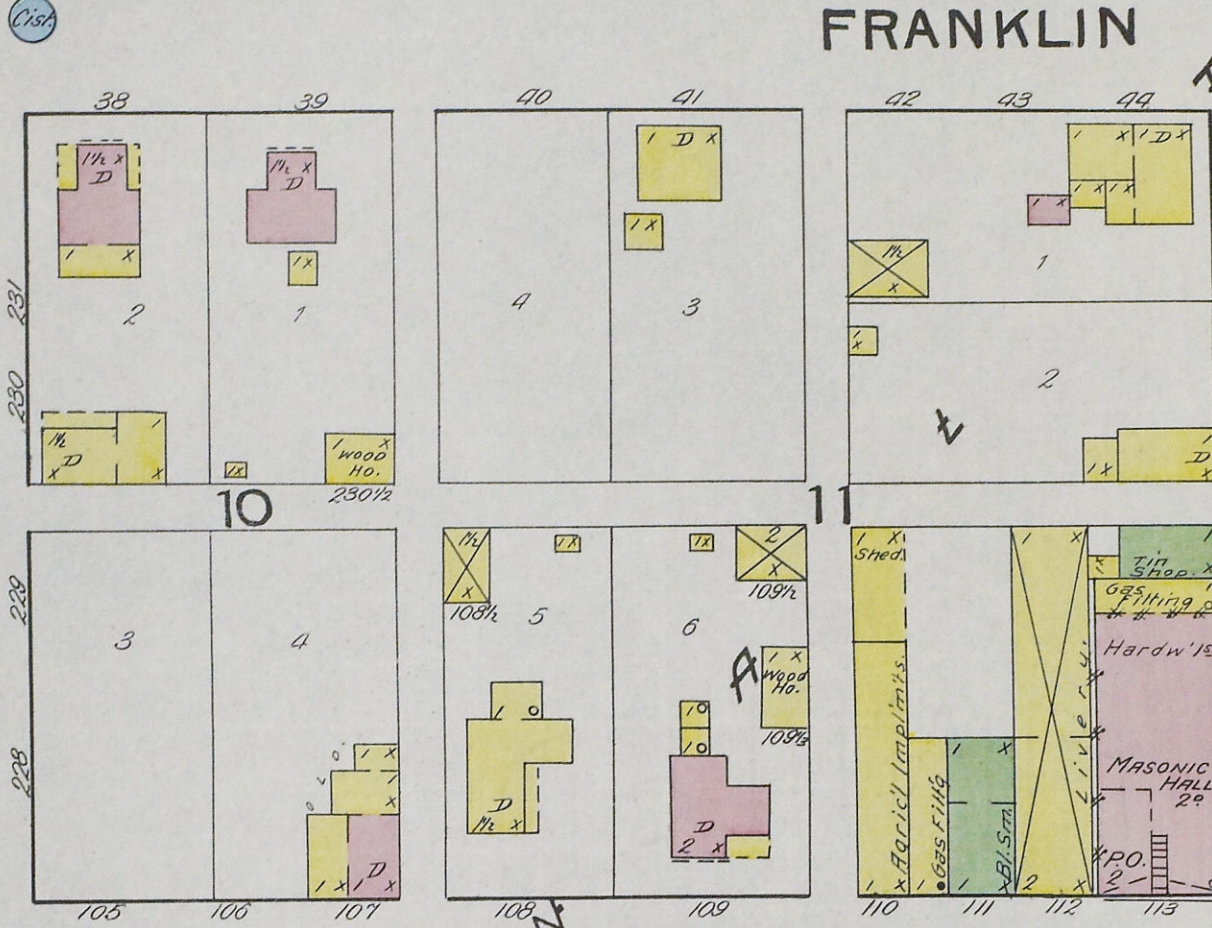
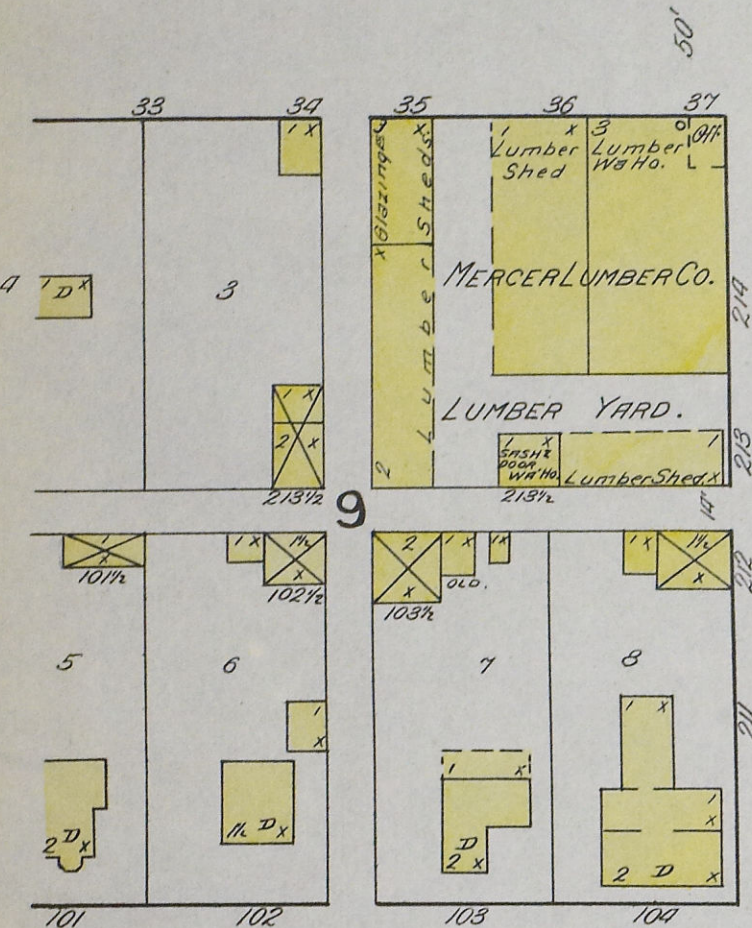
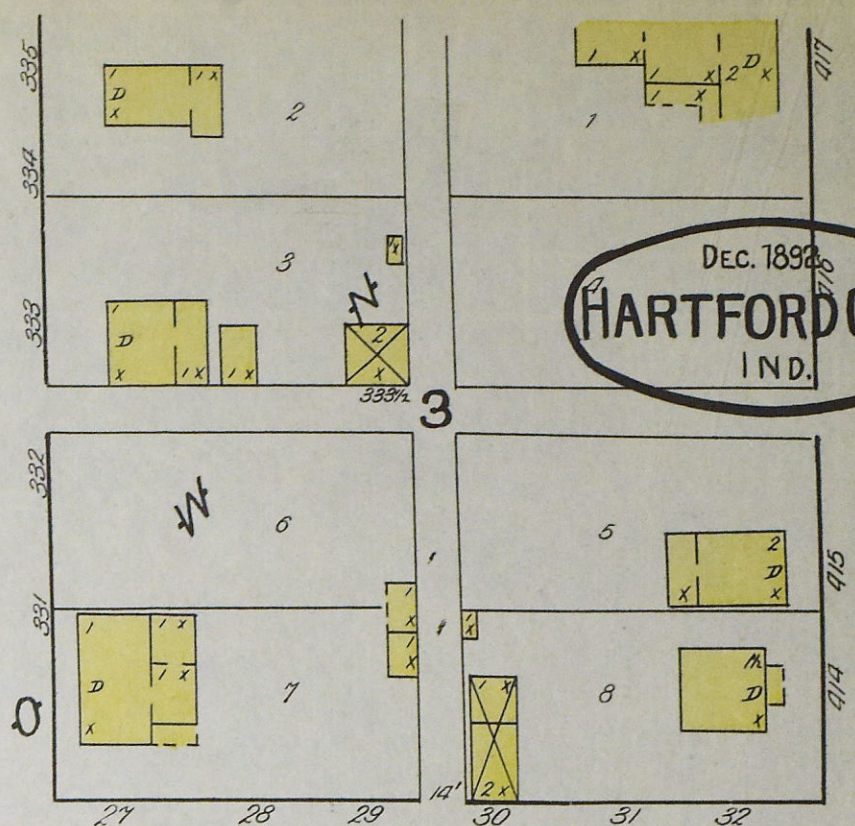
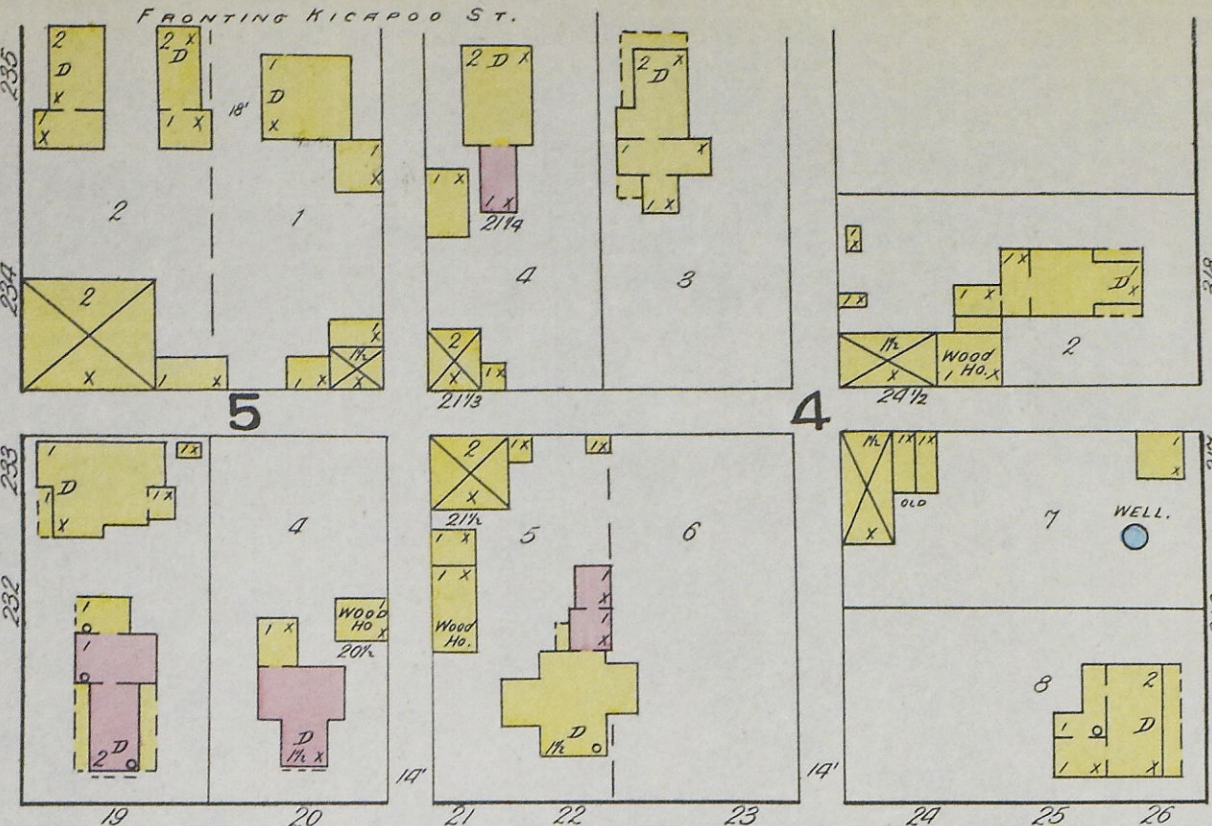
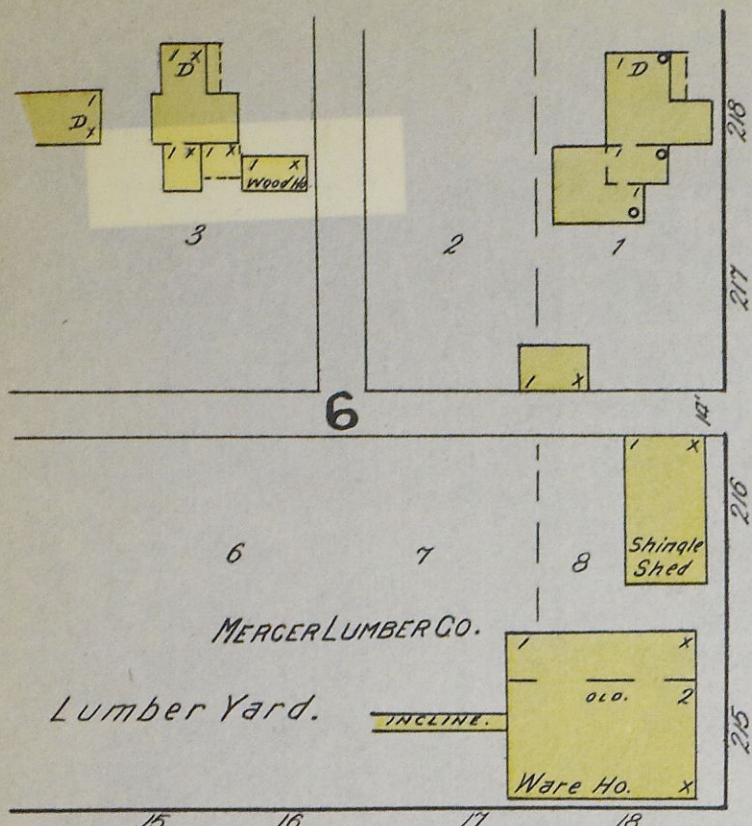
**KEY**

1	FIRE WALL 6 IN. AS ROOF
2	12"
3	FRAME PARTITION
4	STEAM BOILER
5	OPENING & IRON DOOR
6	WINDOWS - SHUTTERS
7	STABLE
8	WINDOW IN 1 <sup>ST</sup> STORY
9	2 <sup>ND</sup> & 3 <sup>RD</sup>
10	B'LDGS COLORED YELLOW ARE FRAME
11	RED - BRICK
12	BLUE - STONE
13	IRON
14	BROWN - ADOBE
15	GREEN - SPECIALS
16	MARKED (S) ARE CLOTH LINED
17	(S) INDICATE RELATIVE HEIGHTS
18	ALTERNATE STREET NOS ARE ACTUAL
19	CONSECUTIVE
20	BROKEN LINE NEAR B'LDG - WOOD CORNICE
21	SOLID - METAL

TRIPLICATE



DEC. 1896  
HARTFORD CITY  
IND.



COUNTY COURT HO.

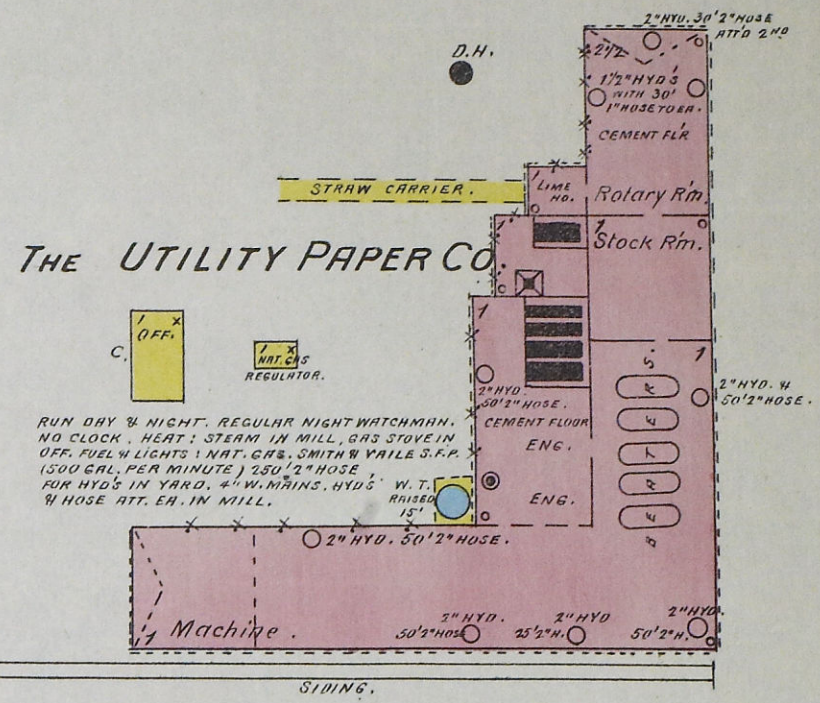
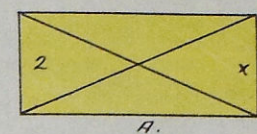
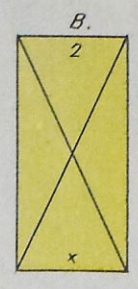
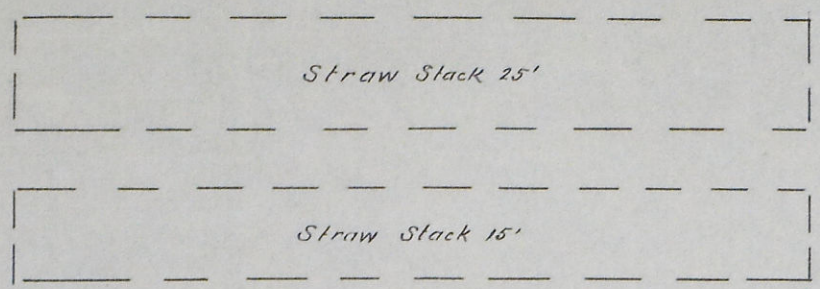
TRIPPLICATE



VACANT.

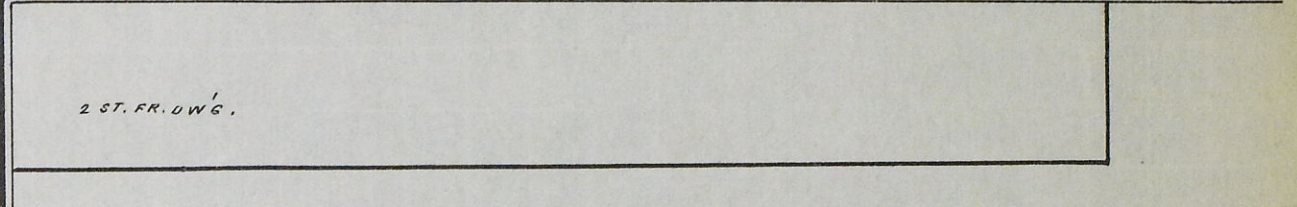
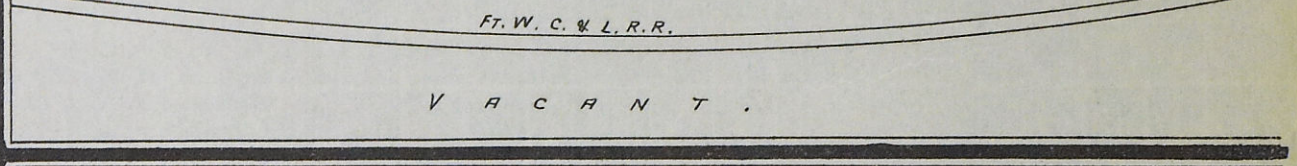
VACANT.

Creek.

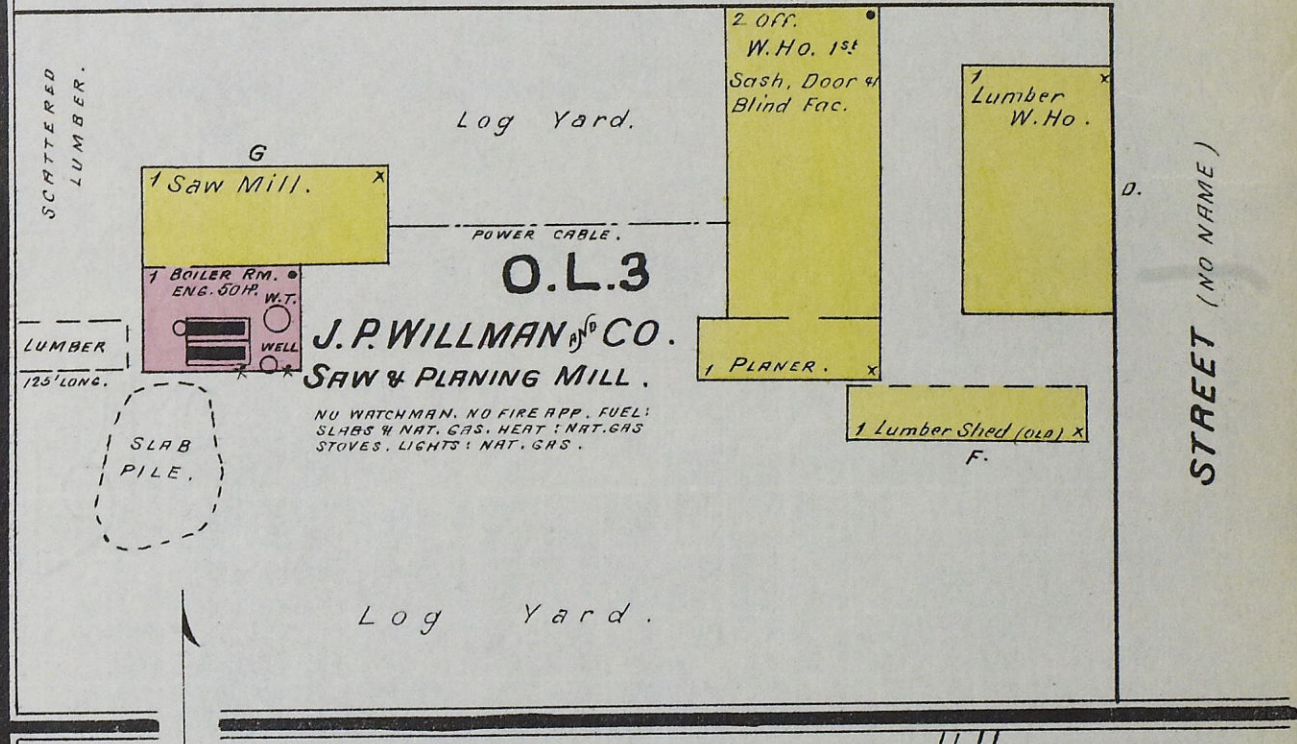


THE UTILITY PAPER CO.

RUN DAY & NIGHT. REGULAR NIGHT WATCHMAN.  
NO CLOCK. HEAT: STEAM IN MILL, GAS STOVE IN  
OFF. FEEL W. LIGHTS 1 WIRE. GAS. SWITCH W. WIRE 5 P.P.  
(500 GAL. PER MINUTE) 2 1/2" HOSE  
FOR MED. IN YARD. 4" WIRE. H.Y.D.S. W. T.  
W. HOSE ATT. IN MILL.

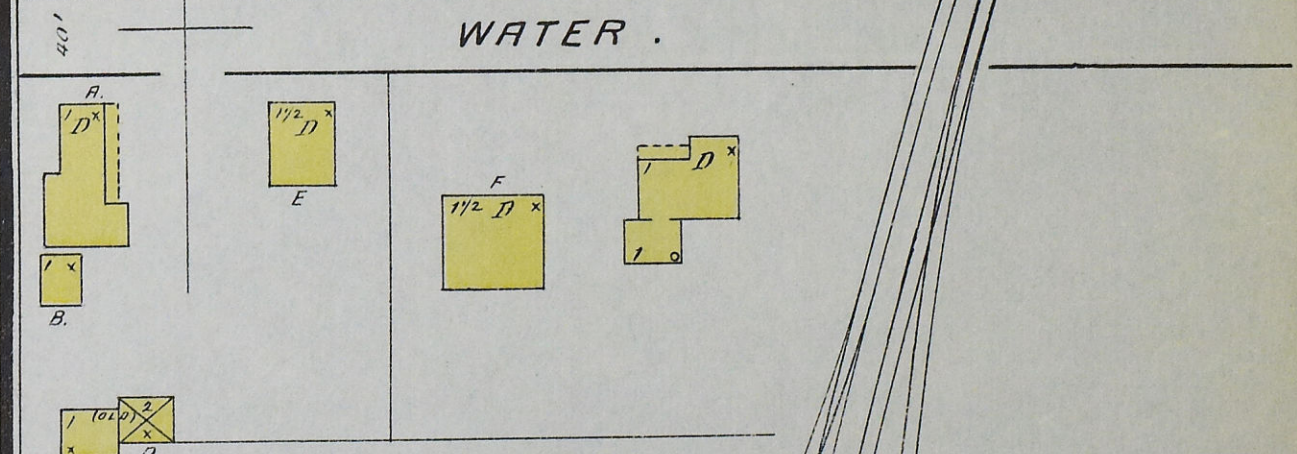


WASHINGTON



J.P. WILLMAN & CO.  
SAW & PLANING MILL.

NO WATCHMAN. NO FIRE APP. FUEL:  
SLABS W. NAT. GAS. HEAT: NAT. GAS  
STOVES. LIGHTS: NAT. GAS.



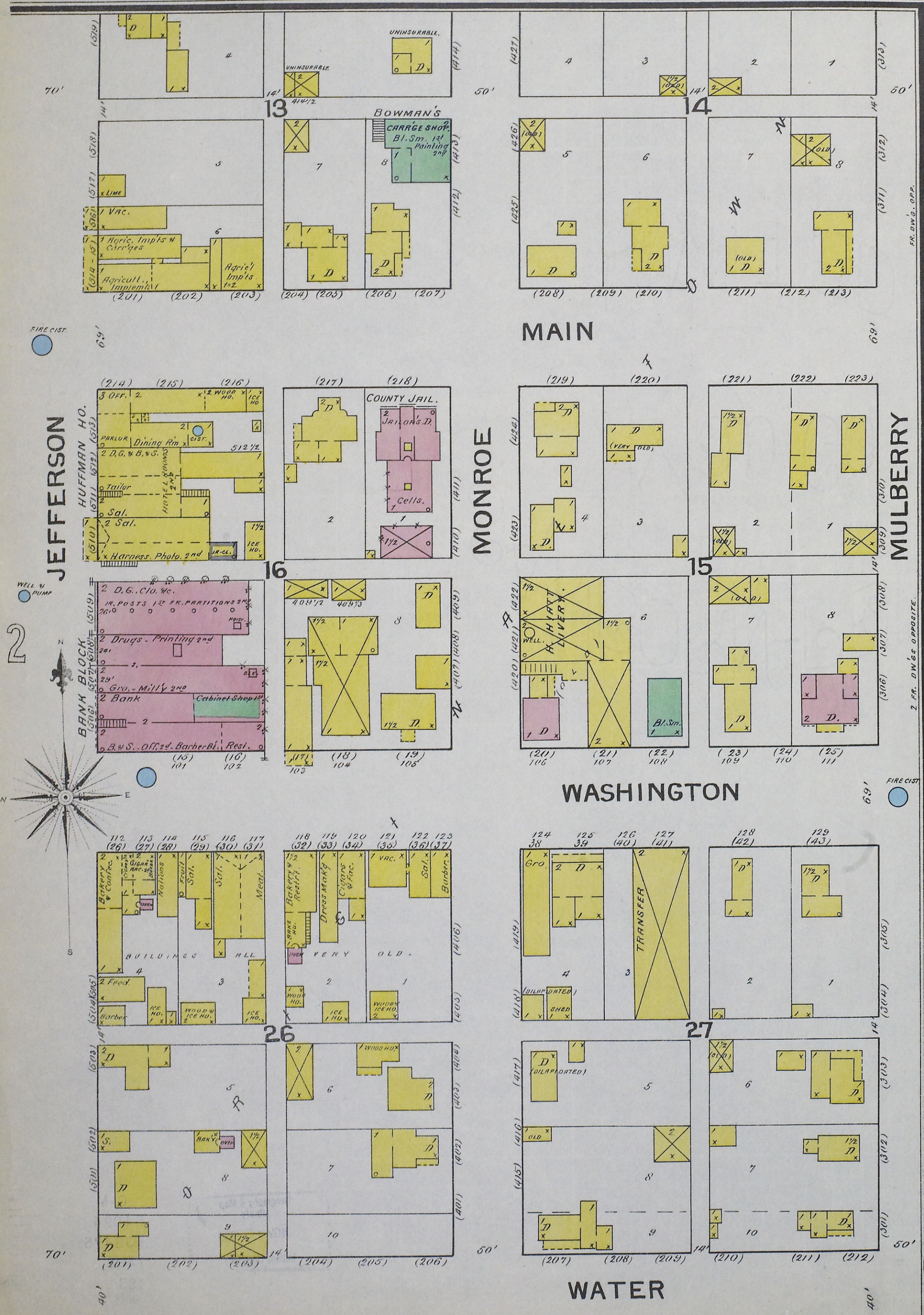
COOLEY & SONS - CITY ROLLER MILLS.

Machinery:  
BEST: 1 CORN SHELLER.  
1ST 6 DAL. SET RULLS.  
1 RUN STONE. 1 FEED MILL.  
1 WHEAT CLEANER.  
2ND 1 CHASPER. 2 PURIFIERS.  
2 MEKON REELS.  
2 CENTRIFUGAL  
1 DRUM BUCTER  
1 BRUSH MACH.  
ATTIC: 1 CENTRIFUGAL.  
3 MEKON REELS.  
1 FLOUR DRESSER  
1 SCOURER.

Scale of Feet.

NO EXPOSURE.

TRIPLICATED



JEFFERSON

HUFFMAN HO.

BANK BLOCK

MONROE

MULBERRY

WASHINGTON

WATER

WASHINGTON

WATER

WASHINGTON

WATER

FIRE CIST.

WELL & PUMP

2

2

2

2

2

2

2

2

2

2

6.9'

6.9'

6.9'

6.9'

6.9'

6.9'

6.9'

6.9'

6.9'

6.9'

6.9'

6.9'

70'

70'

70'

70'

70'

70'

70'

70'

70'

70'

70'

70'

50'

50'

50'

50'

50'

50'

50'

50'

50'

50'

50'

50'

13

14

15

16

17

18

19

20

21

22

23

24

201

202

203

204

205

206

207

208

209

210

211

212

213

214

215

216

217

218

219

220

221

222

223

224

225

226

227

228

229

230

231

232

233

234

235

236

237

238

239

240

241

242

243

244

245

246

247

248

249

250

251

252

253

254

255

256

257

258

259

260

261

262

263

264

265

266

267

268

269

270

271

272

273

274

275

276

277

278

279

280

281

282

283

284

285

286

287

288

289

290

291

292

293

294

295

296

297

298

299

300

301

302

303

304

305

306

307

308

309

310

311

312

313

314

315

316

317

318

319

320

321

322

323

324

325

326

327

328

329

330

331

332

333

334

335

336

337

338

339

340

341

342

343

344

345

346

347

348

349

350

351

352

353

354

355

356

357

358

359

360

361

362

363

364

365

366

367

368

369

370

371

372

373

374

375

376

377

378

379

380

381

382

383

384

385

386

387

388

389

390

391

392

393

394

395

396

397

398

399

400

401

402

403

404

405

406

407

408

409

410

411

412

413

414

415

416

417

418

419

420

421

422

423

424

425

426

427

428

429

430

431

432

433

434

435

436

437

438

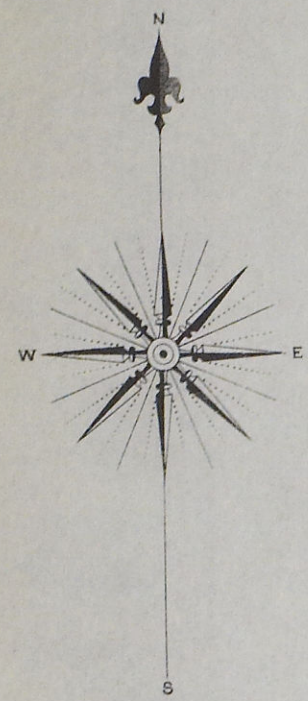
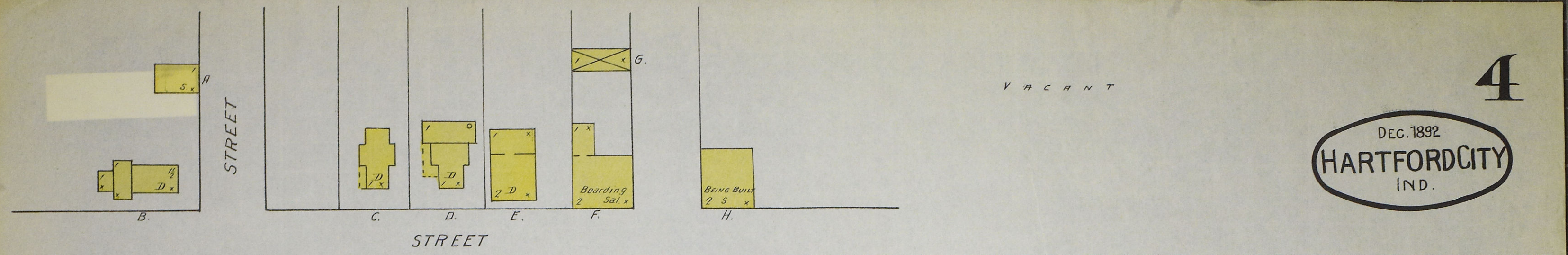
439

440

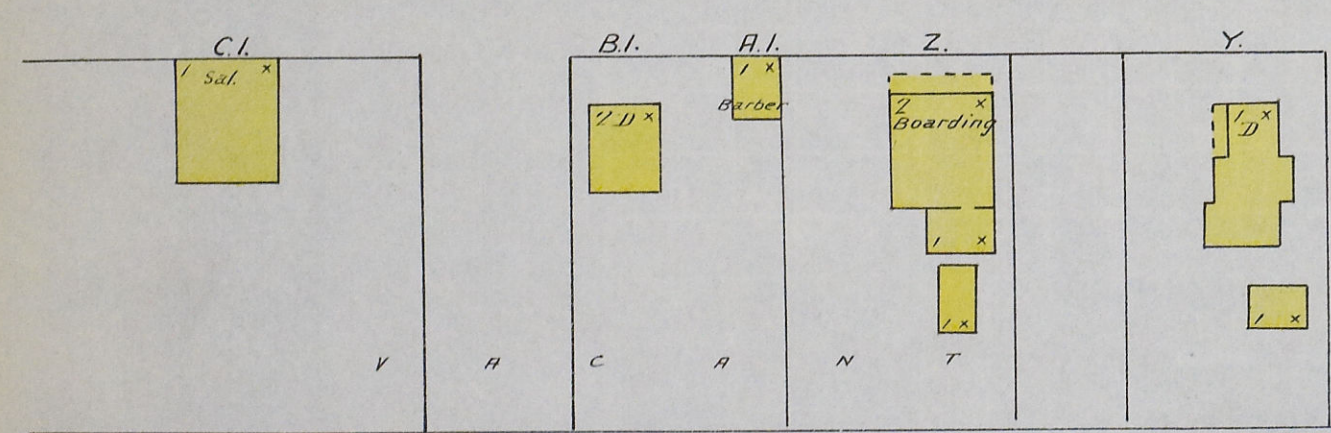
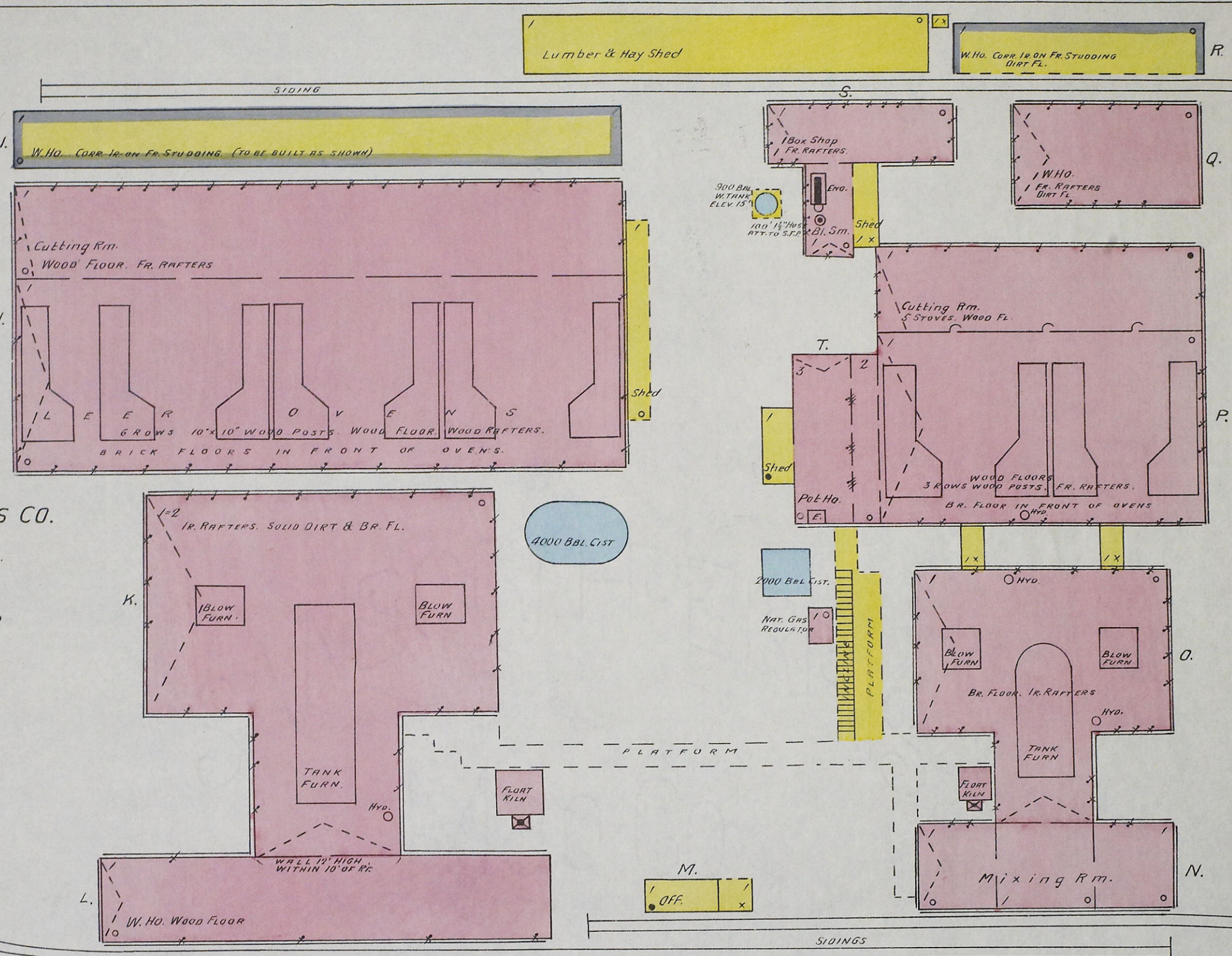
441

442





**HARTFORD CITY GLASS CO.**  
WINDOW GLASS WKS.  
1/4 MILES S. OF COURT HO.  
CONSTANT WATCHMAN. TO HAVE  
CLOCK RUN DAY AND NIGHT.  
FUEL & LIGHT, NAT. GAS, HEAT,  
NAT. GAS STOVES WHERE NOT  
HEATED BY MELTING FURN. S.  
LARGE DEANE DRGS. (INDIANAPOLIS)  
S.F.A. WATER FROM WELLS,  
TO HAVE 2500 1/2 HOSE DIST'D  
ABOUT PLANT, WITH HOSES IN  
AND OUTSIDE OF BLDGS.  
300 HANDS.



**MEREDITH, DAMON & CO.**  
STAVE & HEADING FAC.  
MAN ON DUTY NIGHTS.  
SPRINK. S.F.A. 1 1/2" HOSE  
NO HEAT. LIGHT & FUEL,  
NAT. GAS.

**CRESCENT PAPER MFG. CO.**  
BEING BUILT.  
MAN ON DUTY NIGHTS. TO BE  
IN OPERATION MARCH 1893.  
LIGHT & FUEL, NAT. GAS, HEAT,  
NAT. GAS STOVES. LARGE DEANE (IND.)  
S.F.A. TO HAVE AMPLE HOSE, &  
AUT. SPRINKLERS.

