

INDEX.

Table listing streets (A through W) and their corresponding page numbers. Includes a 'SPECIALS' section listing specific buildings and their page numbers.

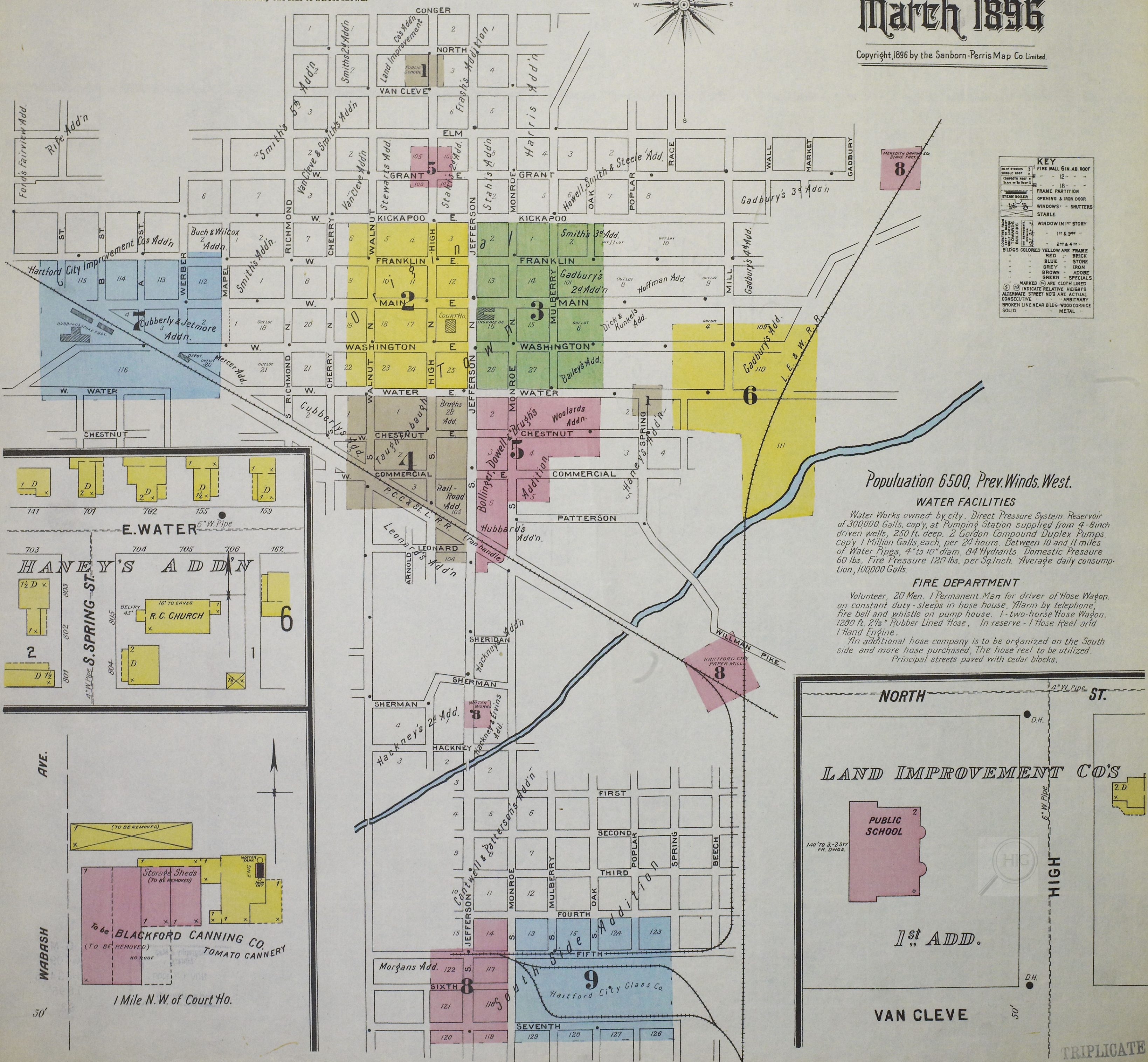
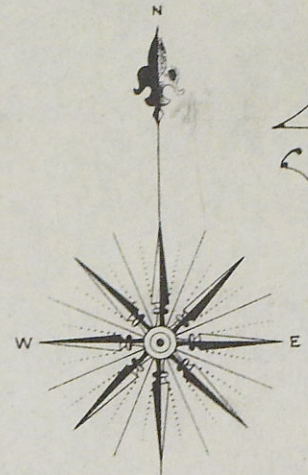
Insurance Maps of HARTFORD CITY INDIANA COUNTY

Sanborn-Map Co. Limited NEW YORK

SCALE 50 FT. TO AN INCH

March 1896

Copyright, 1896 by the Sanborn-Map Co. Limited.



KEY table defining symbols for fire walls, roofs, streets, and building materials.

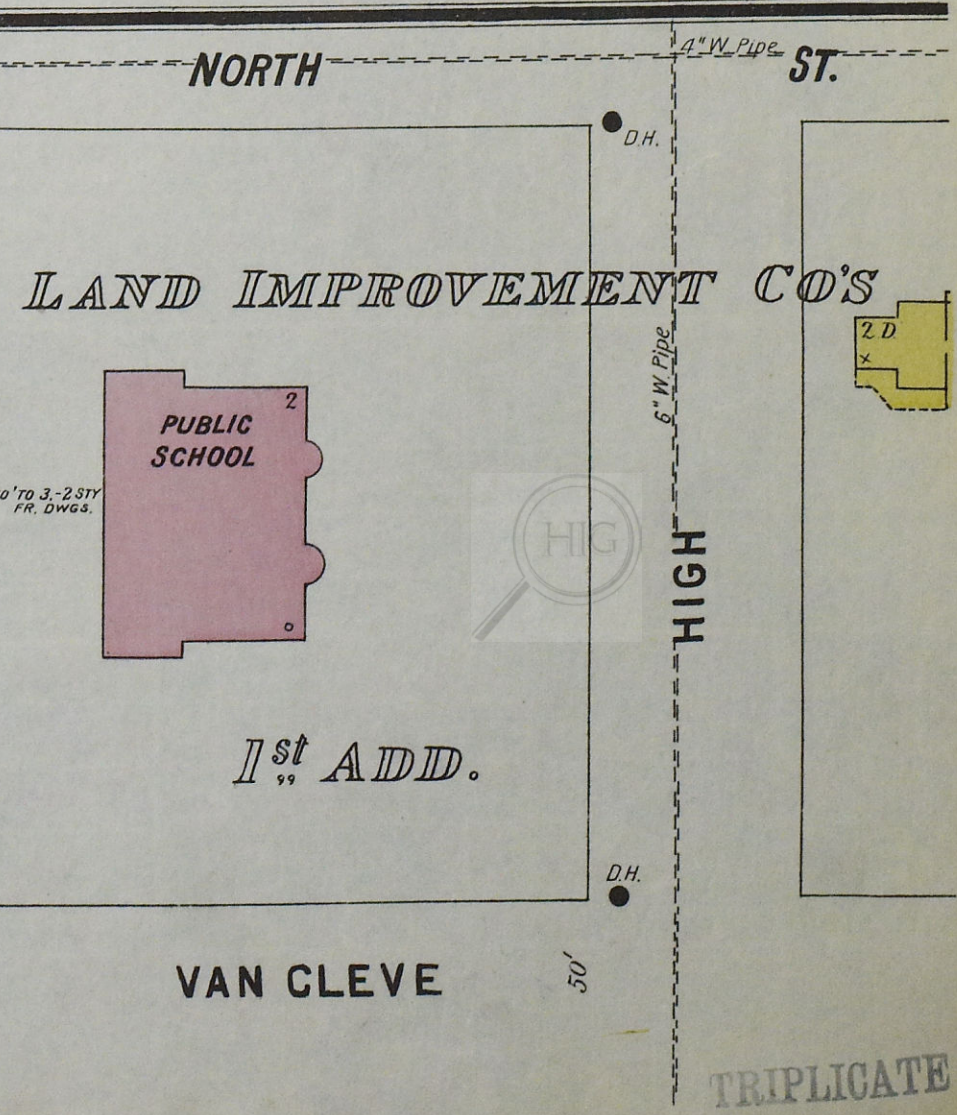
Population 6500, Prev. Winds West.

WATER FACILITIES

Water Works owned by city. Direct Pressure System. Reservoir of 300000 Galls. capy. at Pumping Station supplied from 4-8 inch driven wells, 250 ft. deep. 2 Gordon Compound Duplex Pumps. Capy 1 Million Galls. each, per 24 hours. Between 10 and 11 miles of Water Pipes, 4" to 10" diam. 64 Hydrants. Domestic Pressure 60 lbs. Fire Pressure 120 lbs. per Sq. Inch. Average daily consumption, 100000 Galls.

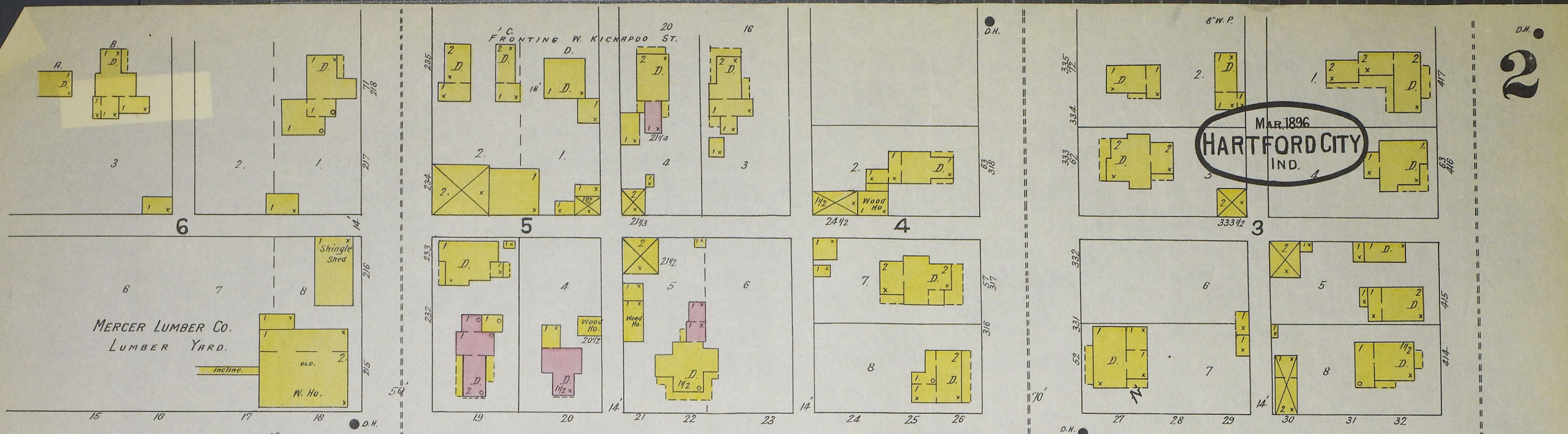
FIRE DEPARTMENT

Volunteer, 20 Men. 1 Permanent Man for driver of Hose Wagon on constant duty - sleeps in hose house. Alarm by telephone, fire bell and whistle on pump house. 1-two-horse Hose Wagon, 1250 ft. 2 1/2" Rubber Lined Hose. In reserve - 1 Hose Reel and 1 Hand Engine. An additional hose company is to be organized on the South side and more hose purchased. The hose reel to be utilized. Principal streets paved with cedar blocks.



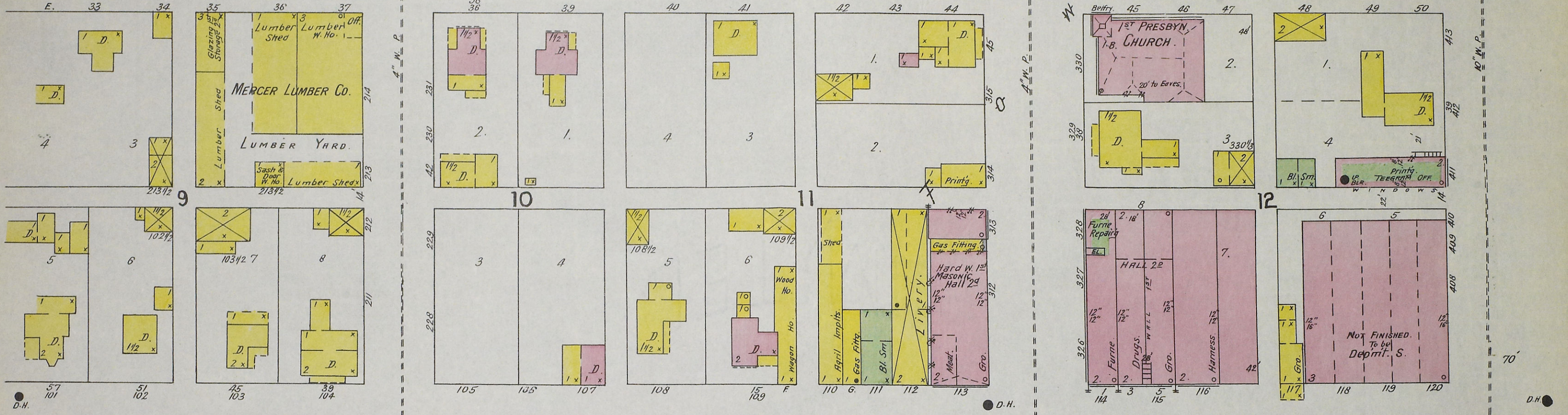
TRIPLICATE

MAR. 1896
HARTFORD CITY
IND.



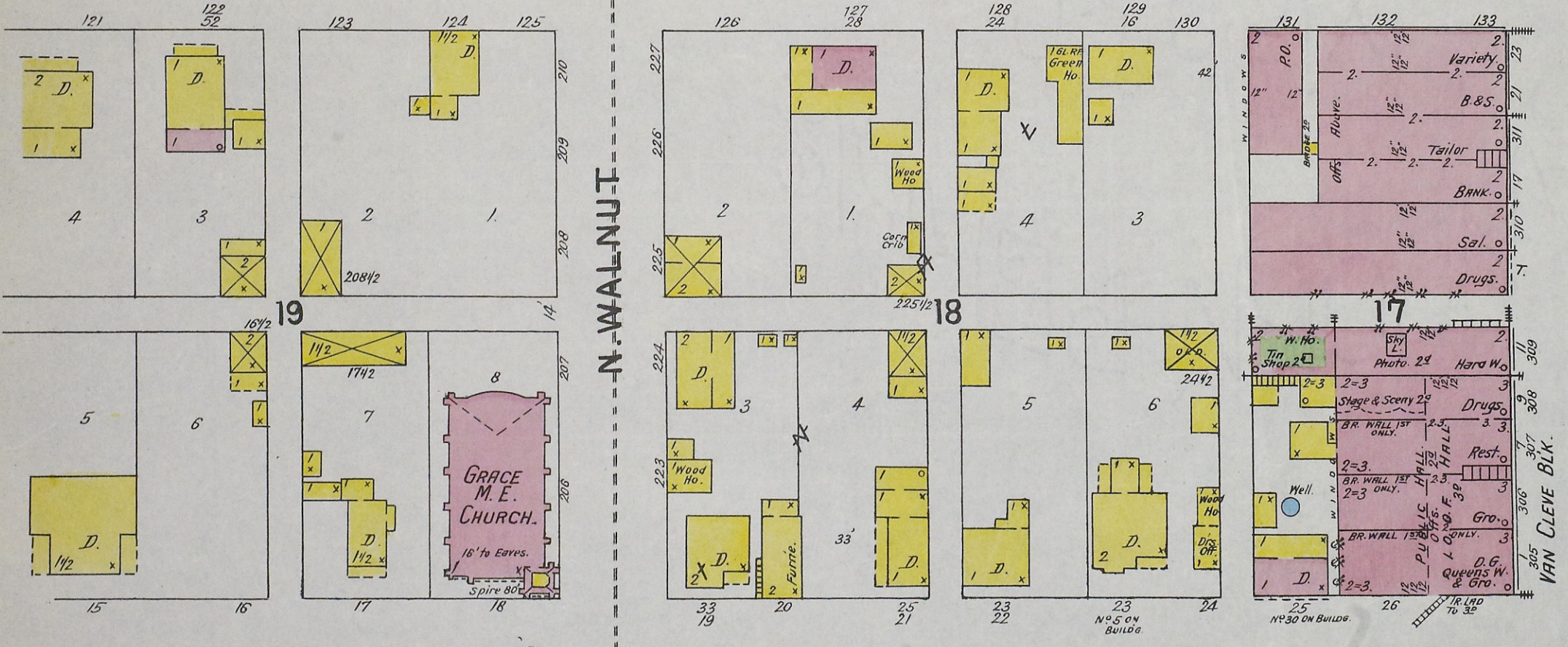
W. FRANKLIN

E. FRANKLIN



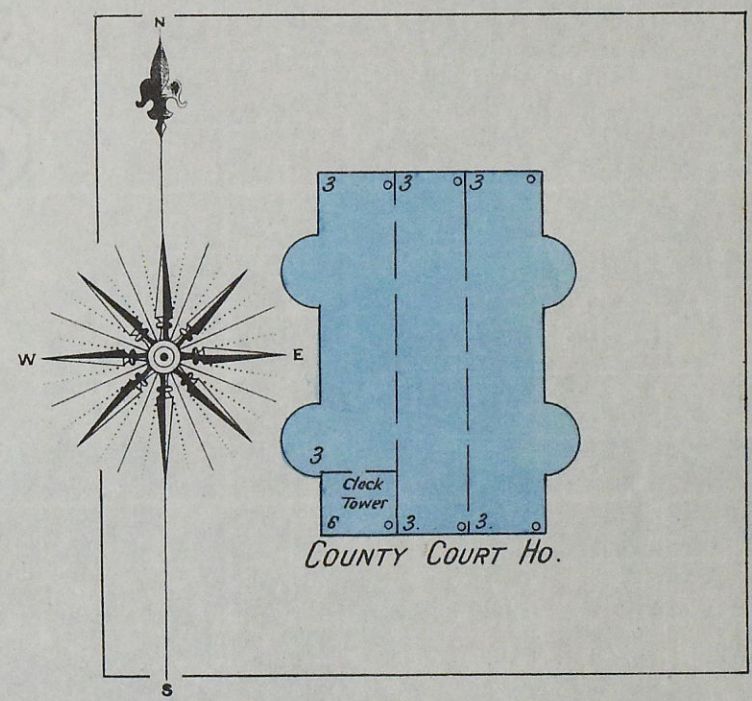
W. MAIN

E. MAIN

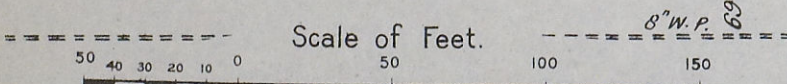


N. WALNUT

N. HIGH

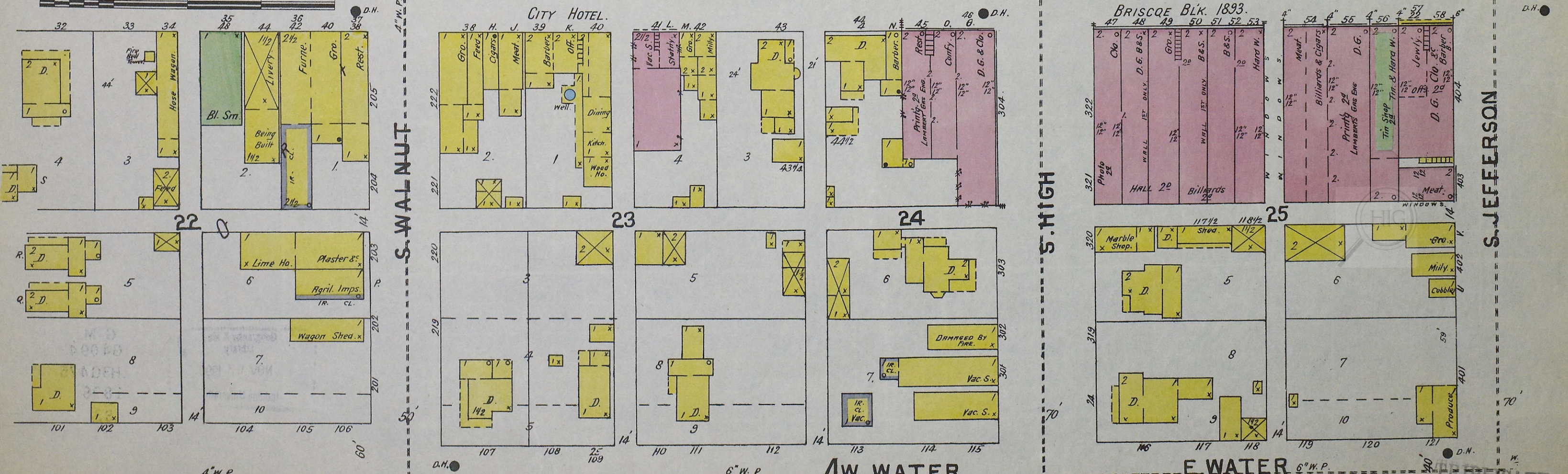


S. JEFFERSON



W. WASHINGTON

E. WASHINGTON



S. WALNUT

S. HIGH

S. JEFFERSON

W. WATER

E. WATER

REPLICATED

MAR. 1896
HARTFORD CITY
IND.

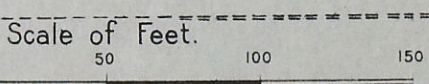
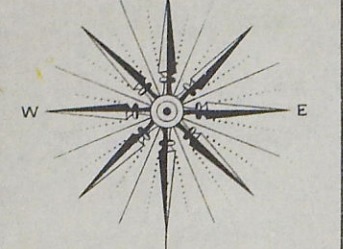
N. OAK

E. FRANKLIN

E. MAIN

E. WASHINGTON

E. WATER



TRIPPLICATE

E. WATER

E. CHESTNUT

E. COMMERCIAL

S. JEFFERSON

S. MONROE

N. HIGH

4

6

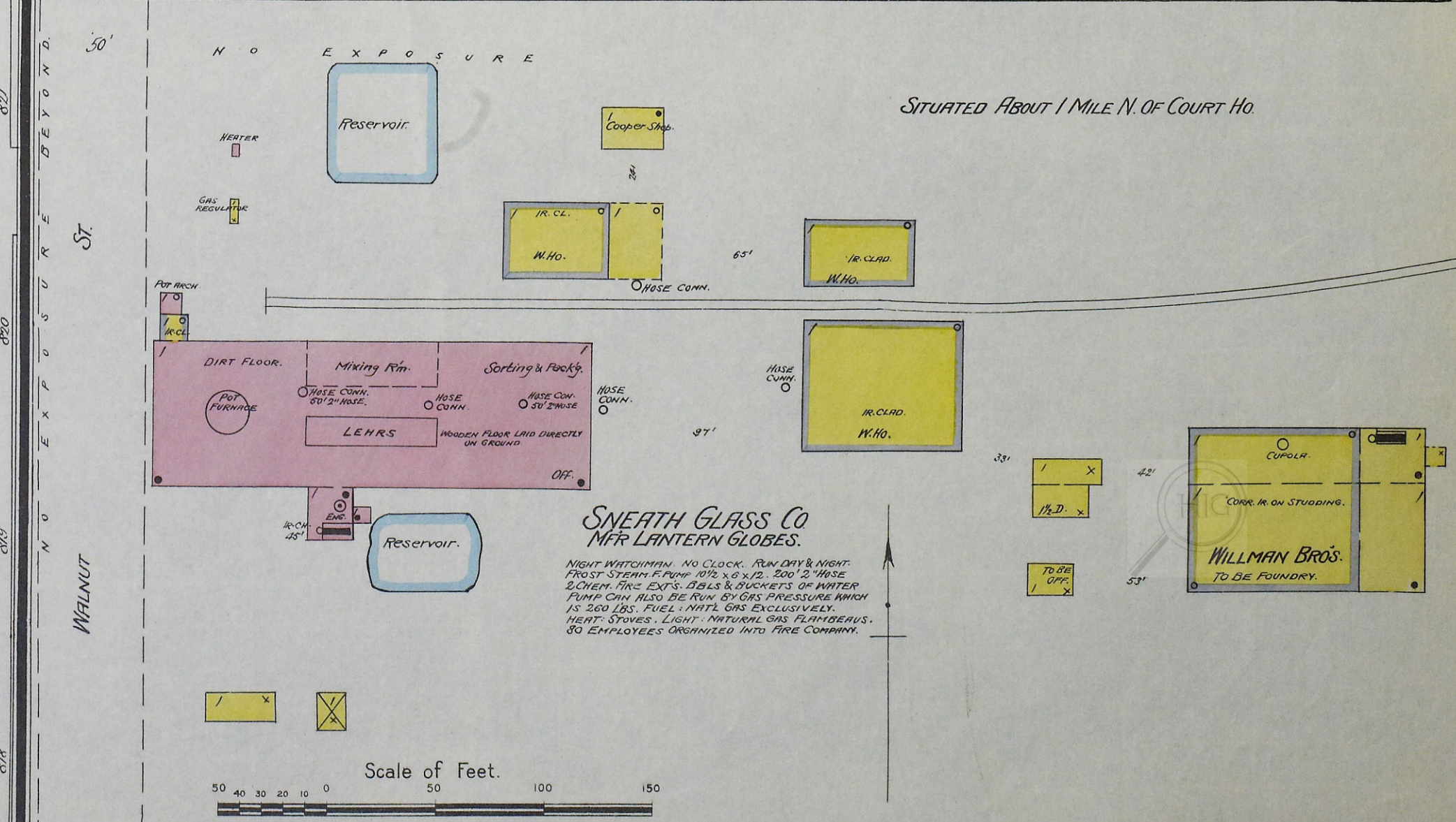
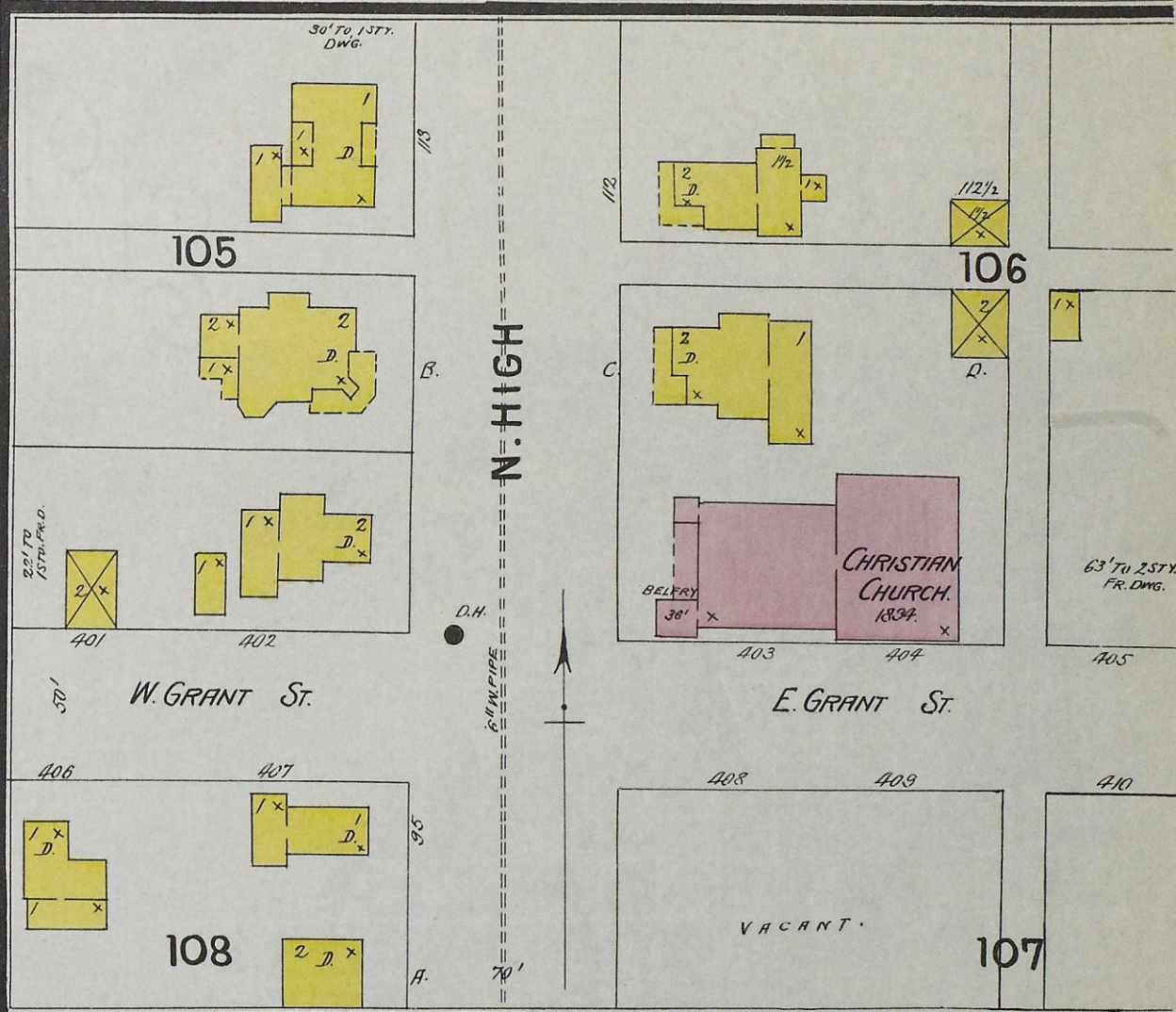
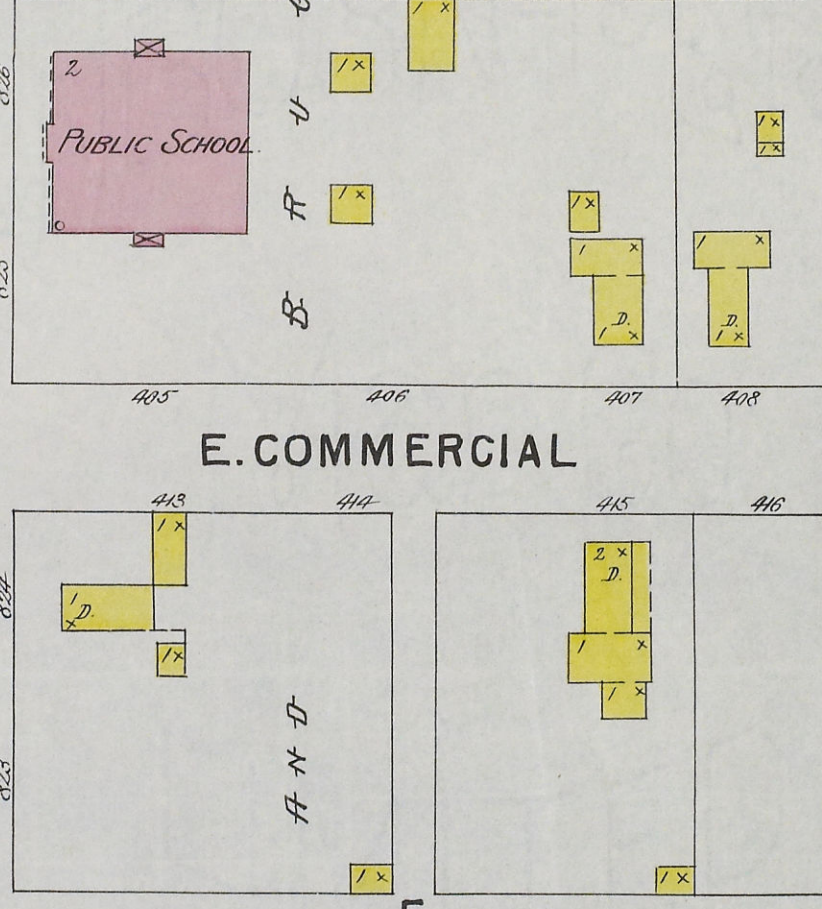
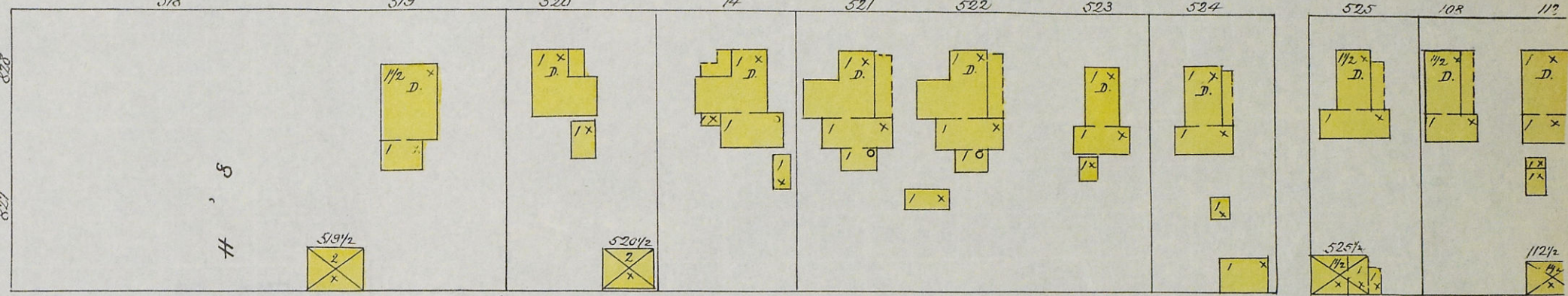
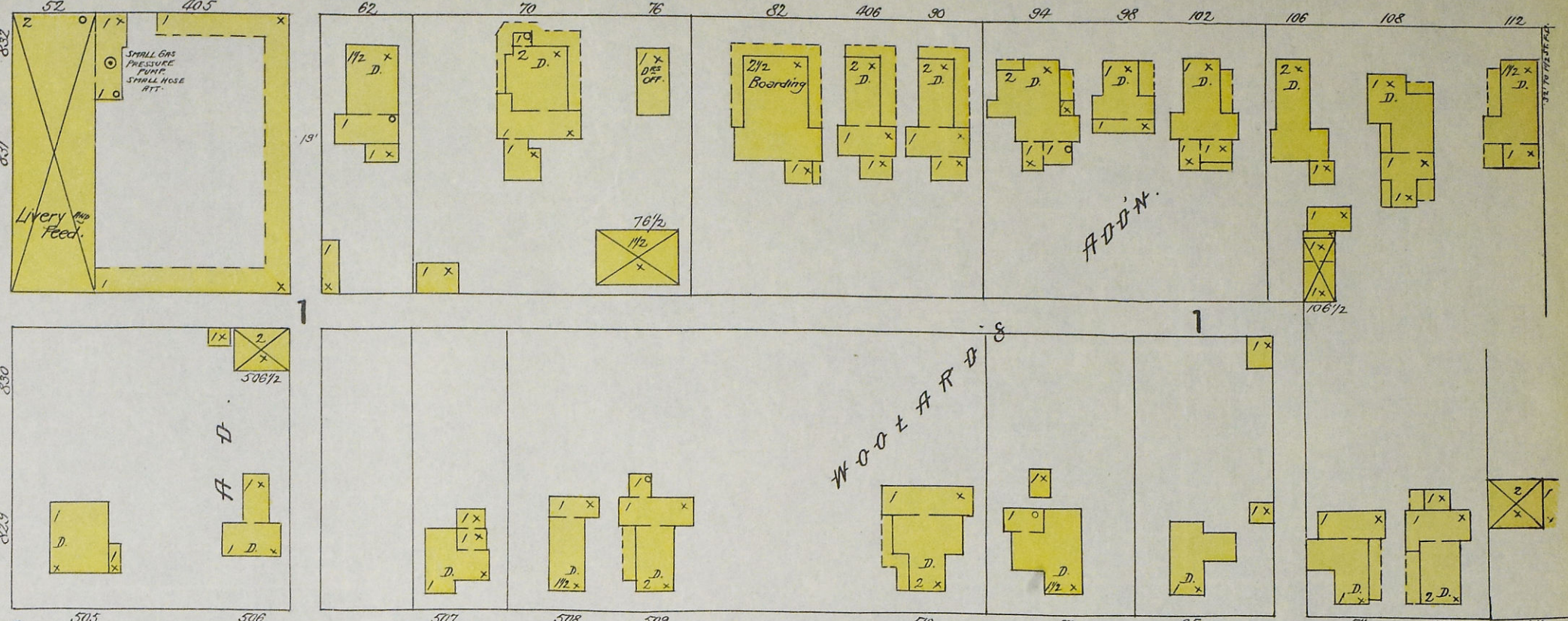
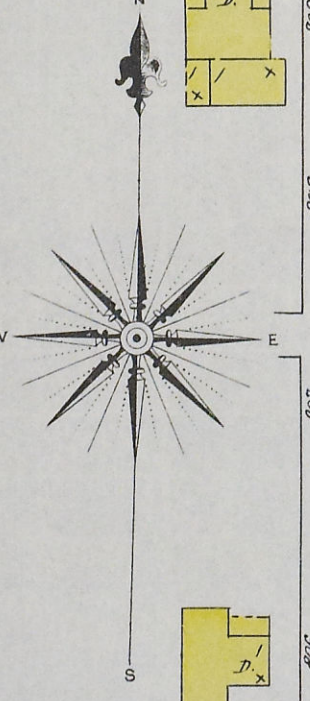
2

1

4

5

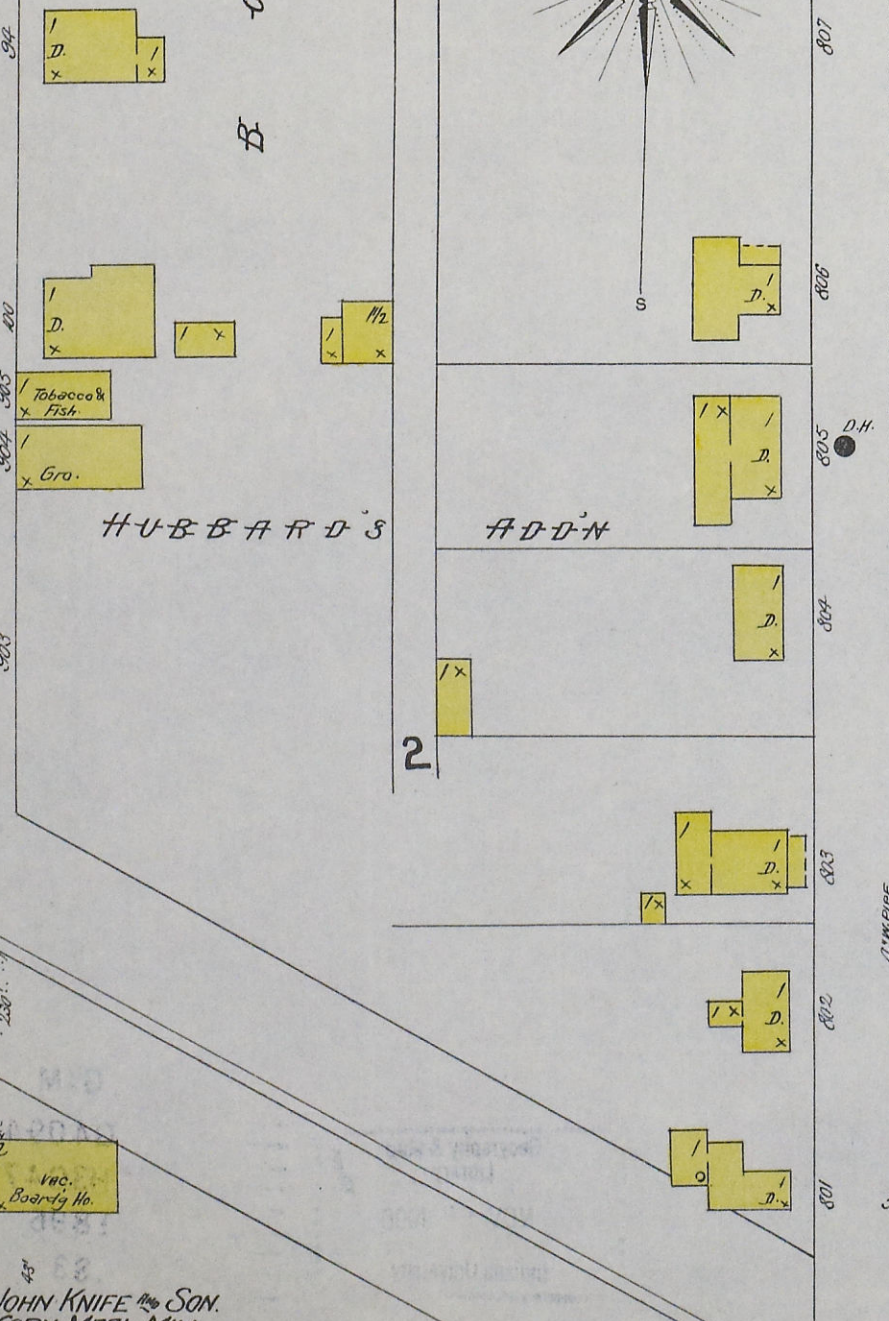
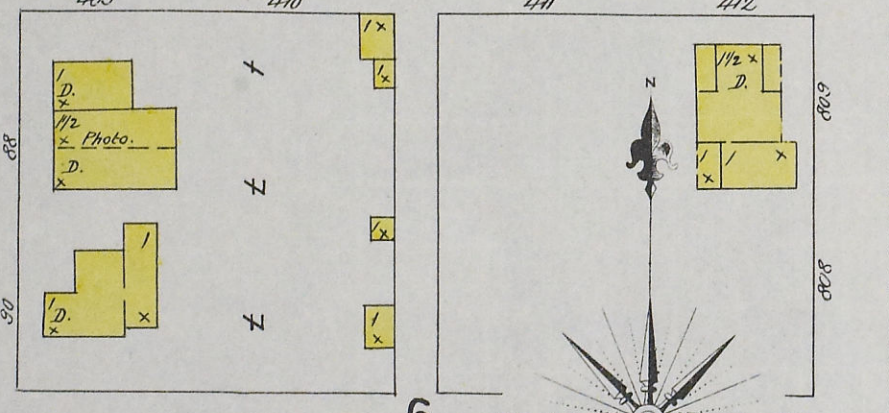
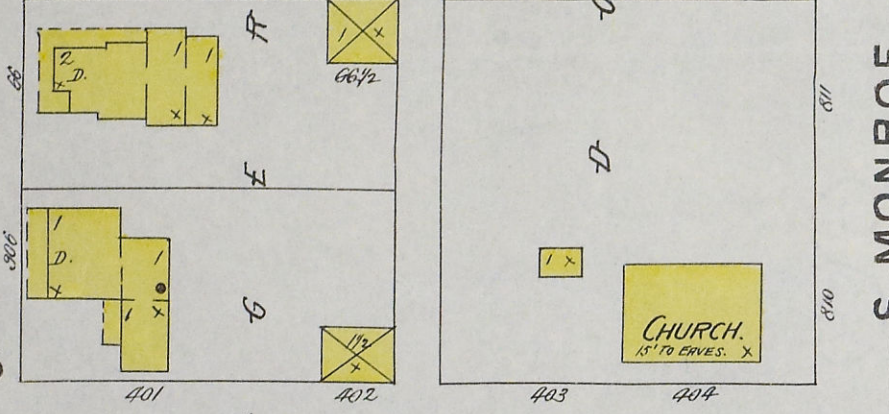
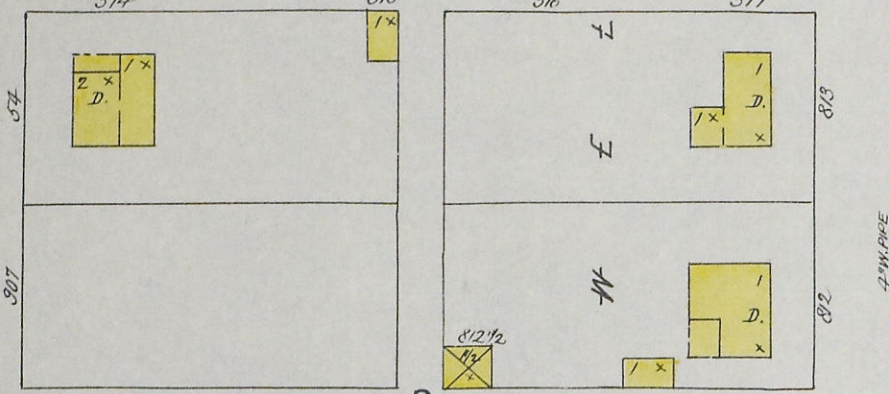
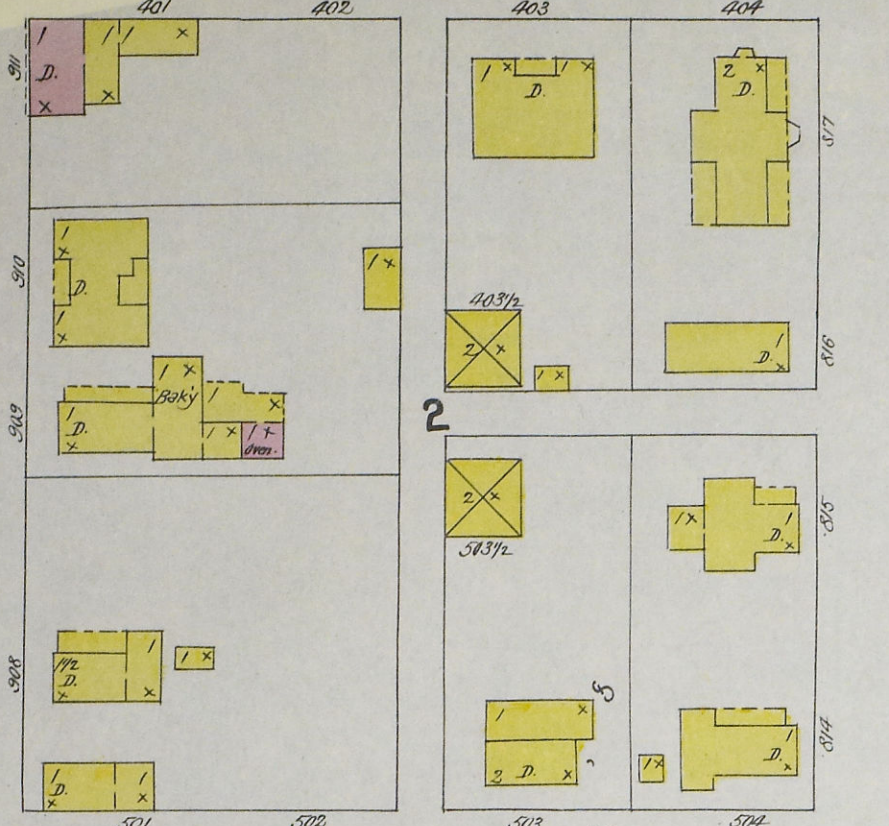
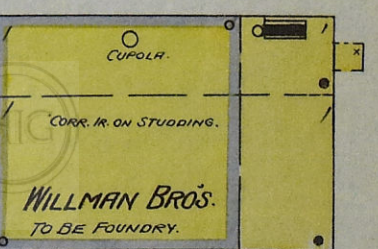
2



SITUATED ABOUT 1 MILE N. OF COURT HO.

SNEATH GLASS CO
MFG LANTERN GLOBES.

NIGHT WATCHMAN, NO CLOCK, RUN-DAY & NIGHT.
FIRST STEAM ENGINE 102, 30' x 42', 200' 2" WHEELS.
2 CHEM. FIRE EXTS. 2 BLS & BUCKETS OF WATER.
PUMP CAN ALSO BE RUN BY GAS PRESSURE WHICH
IS 500 LBS. FUEL - WITH GAS EXCLUSIVELY.
HEAT - STOVES. LIGHT - NATURAL GAS FLAMBEAUS.
80 EMPLOYEES ORGANIZED INTO FIRE COMPANY.



JOHN KNIFE & SON.
CORN MEAL MILL.

MACHY
CORN CRUSHER.
MEAL BLAN.
CORN-SHELLER.
CORN-MEAL BOLT.

TRIPLICATE

MAR 1896
HARTFORD CITY
IND.



WILLMAN LUMBER CO. SAW AND PLANING MILL AND LUMBER W.H.O.s.

Scattered Lumber Piles.

Log Yard.

Log Yard.

O.L. 3

2 Sash & Door Fac. 2^d. Planing & Saw Mill 1st.

NO WATCHMAN. FUEL: STEAM & NATL GAS. HEAT: NATL GAS STOVES. LIGHTS: ELEC. CITY WATER. 50' 3/4" HOSE IN BLDG. NO. 3 CHEMICAL EXTINGUISHERS.

W.H.O. 1. 2. W.H.O. 1. 2.

Lumber Shed.

W.H.O.

Lumber Shed.

E. WASHINGTON

E. WATER

HANEY'S

ADD'N.

C1.

151

CHESTNUT ST.

HARTFORD CITY ARTIFICIAL ICE CO.
Ammonia Absorption Process.

HARTFORD LIGHT AND POWER CO.

2. REC. & 2. INCANDESCENT DYNAMOS.

W.H.O.s.

ENG. 150 HP.

ICE HO.

813 1/2

COOLEY AND SONS, CITY ROLLER MILLS.

NO WATCHMAN. FUEL: NATL GAS. HEAT: EXHAUST STEAM IN ONE. NOT AIR HEATER IN EAST OF MILL. LIGHTS: NATL GAS. SMALL ST. P. 120' 3/4" HOSE. 3/4" V.P. IN MILL. HOSE ATT'D. EACH FL.

BNS. 1 CORN SHELLER.

1st 6 DOUBLE SETS ROLLS. 1 IRON STONE. 1 FEED MILL. 1 WHEAT CLEARER.

2^d 1 SCLDER. 3 PURIFIERS. 6 MEYERSON WHEELS. 2 CENTRIFUGALS. 1 BRAN OUSTER. 1 BRUSH MACH.

ATTIC. 1 CENTRIFUGAL. 1 MEYERSON WHEELS. 1 FLOUR DRESSER. 1 SCOURER.

THE UTILITY PAPER CO.
Run Night & Day.

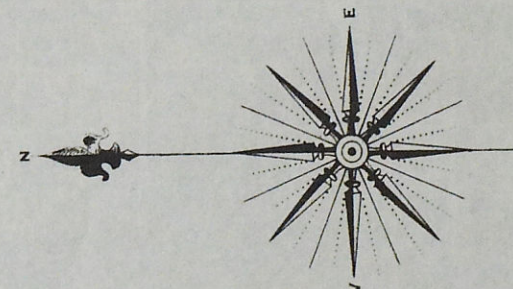
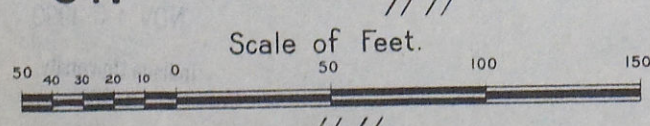
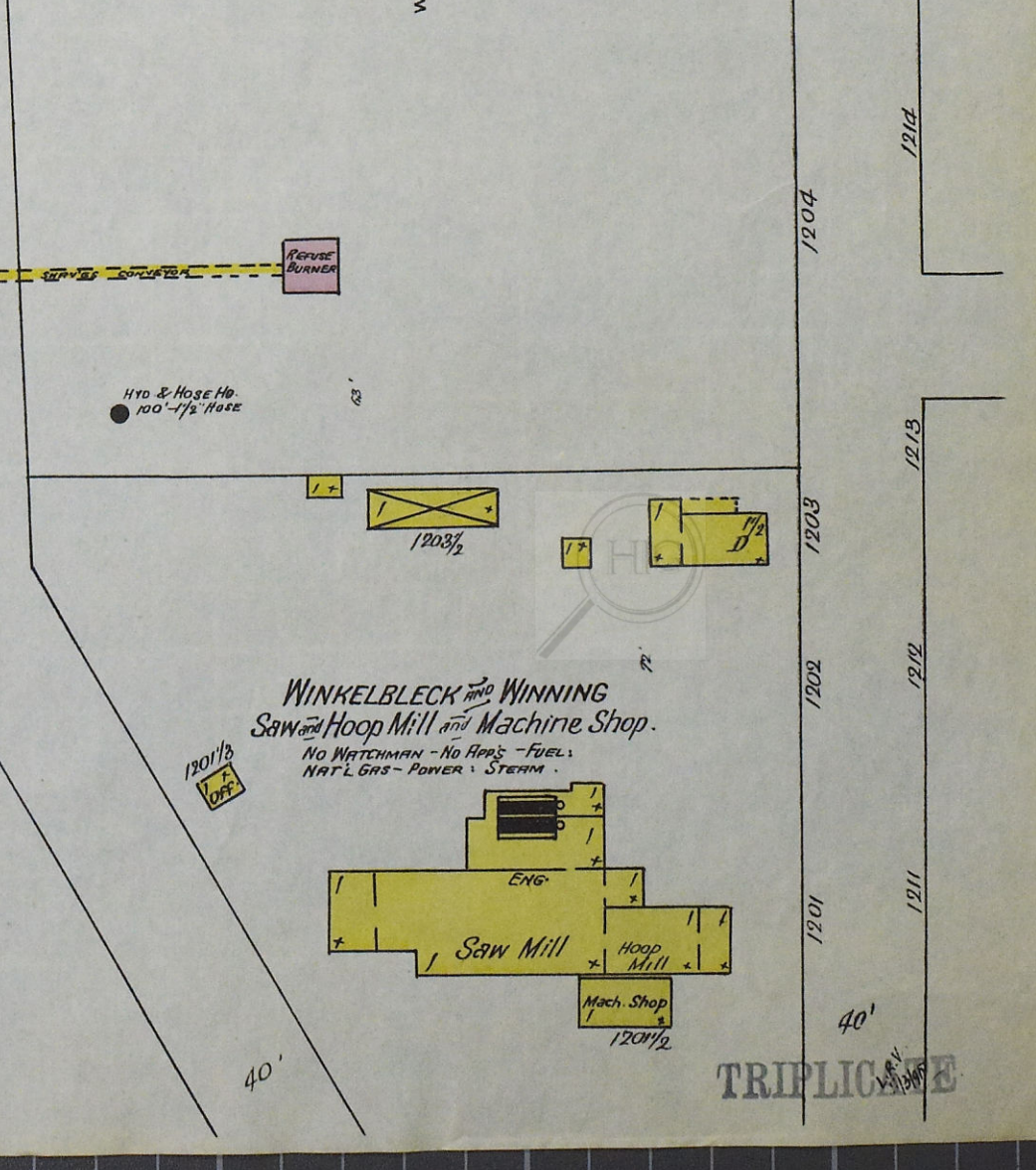
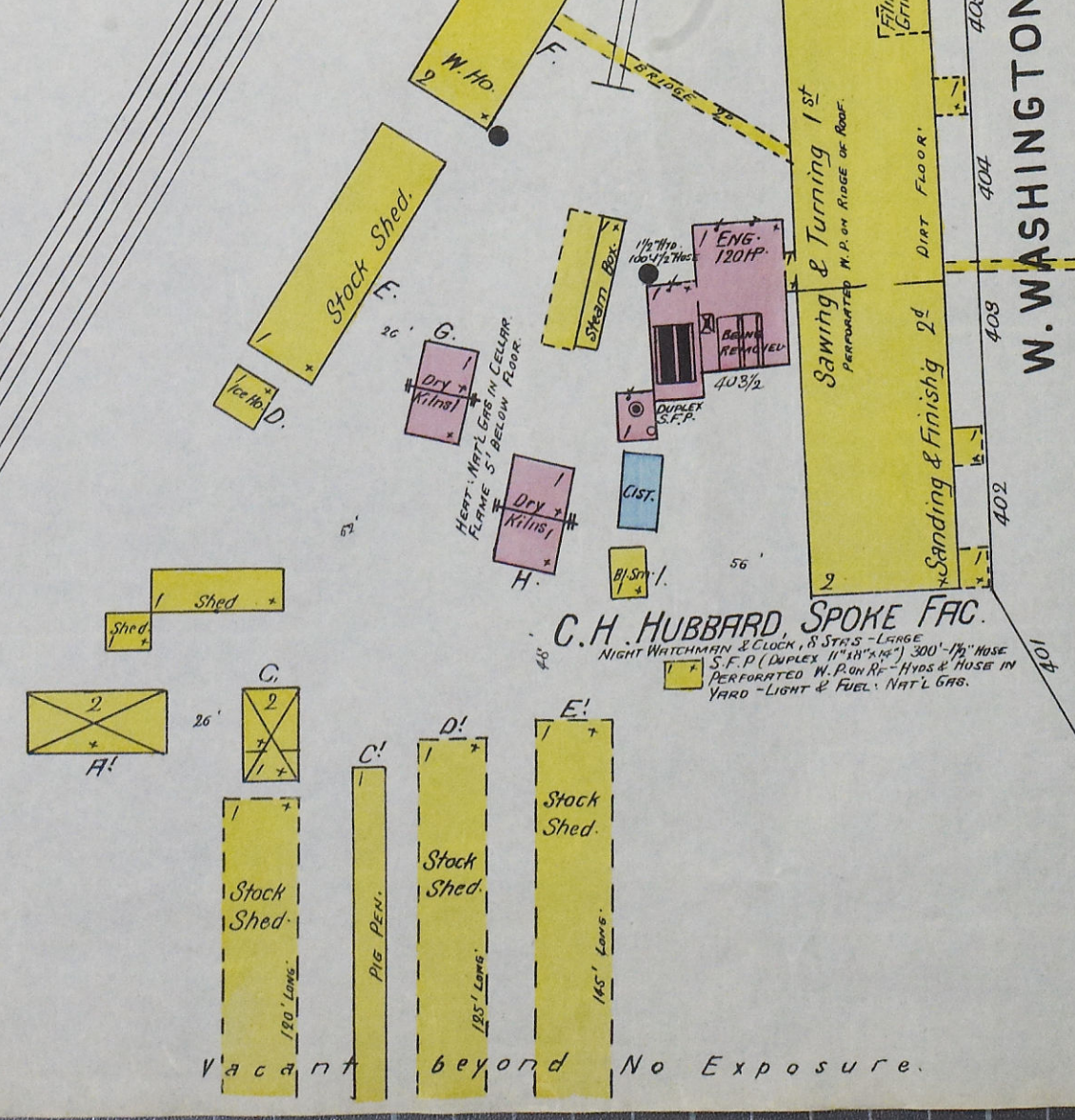
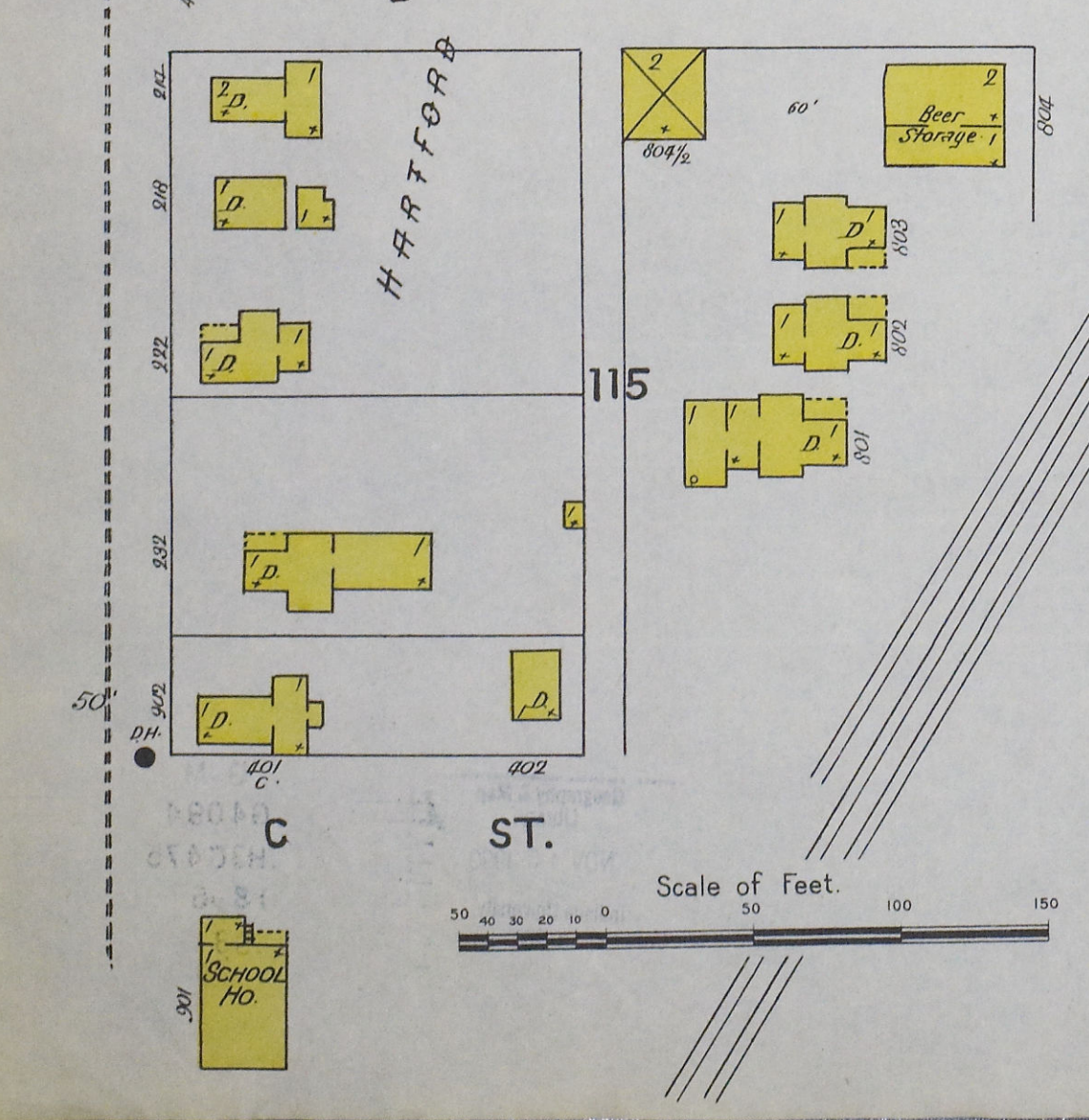
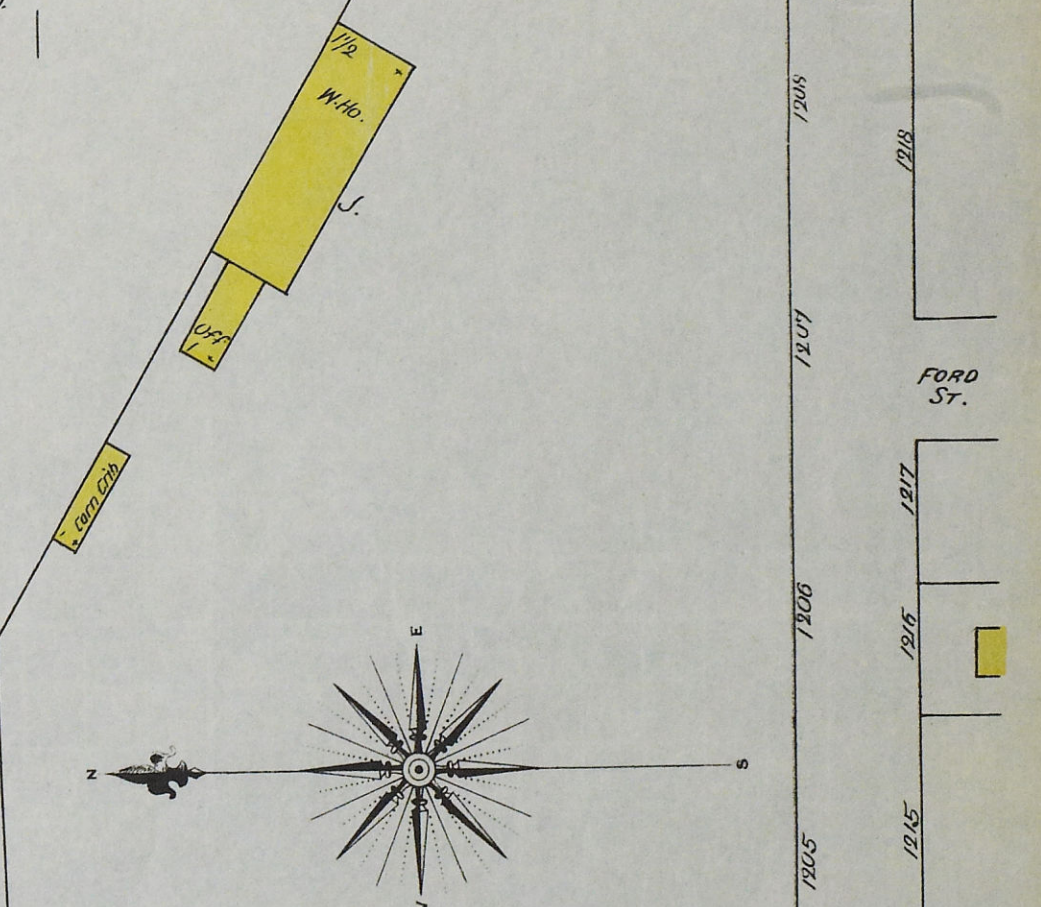
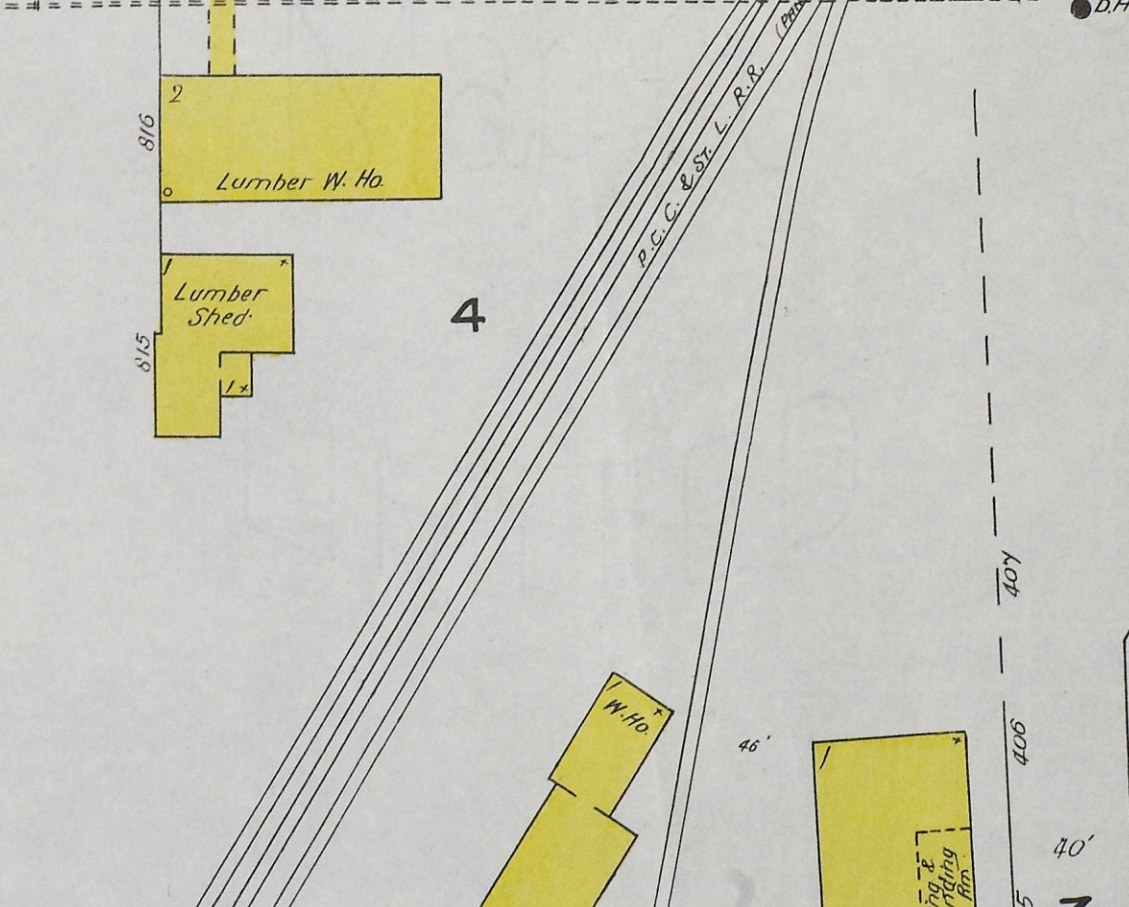
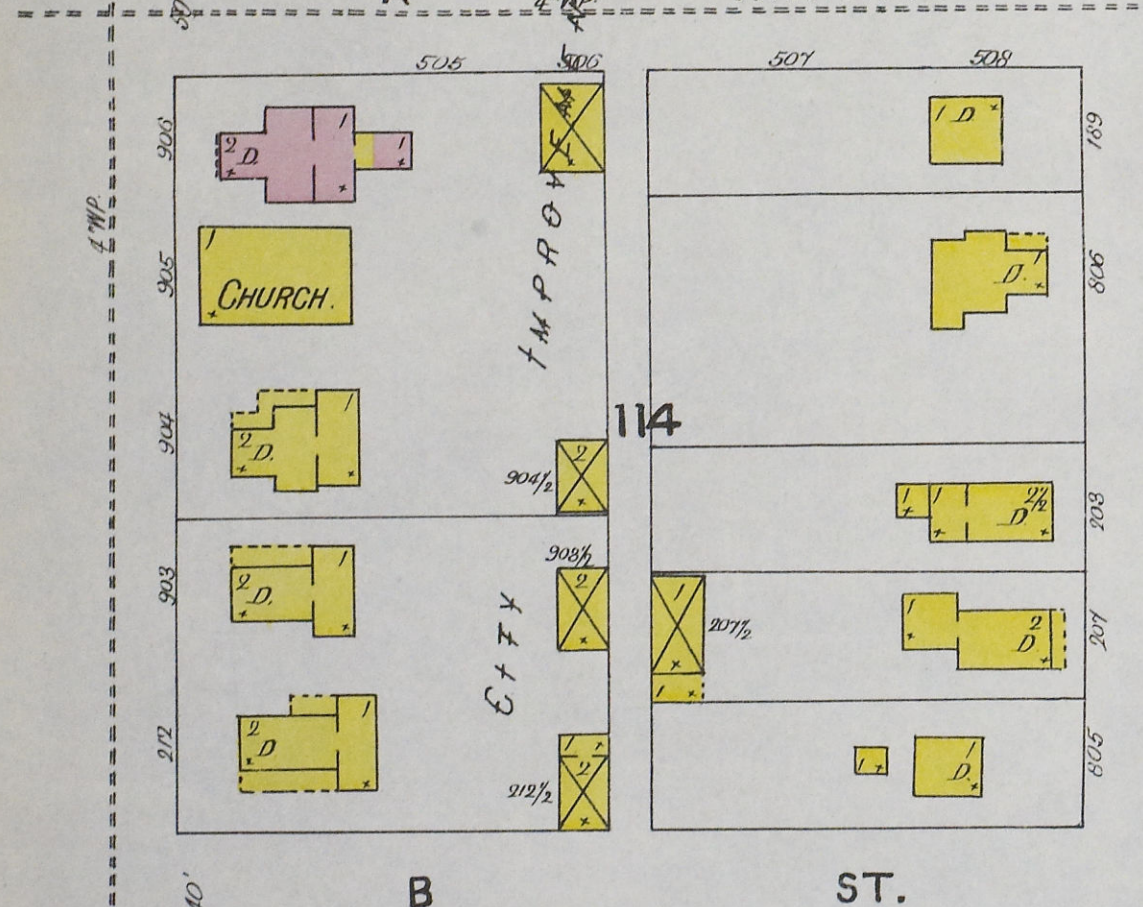
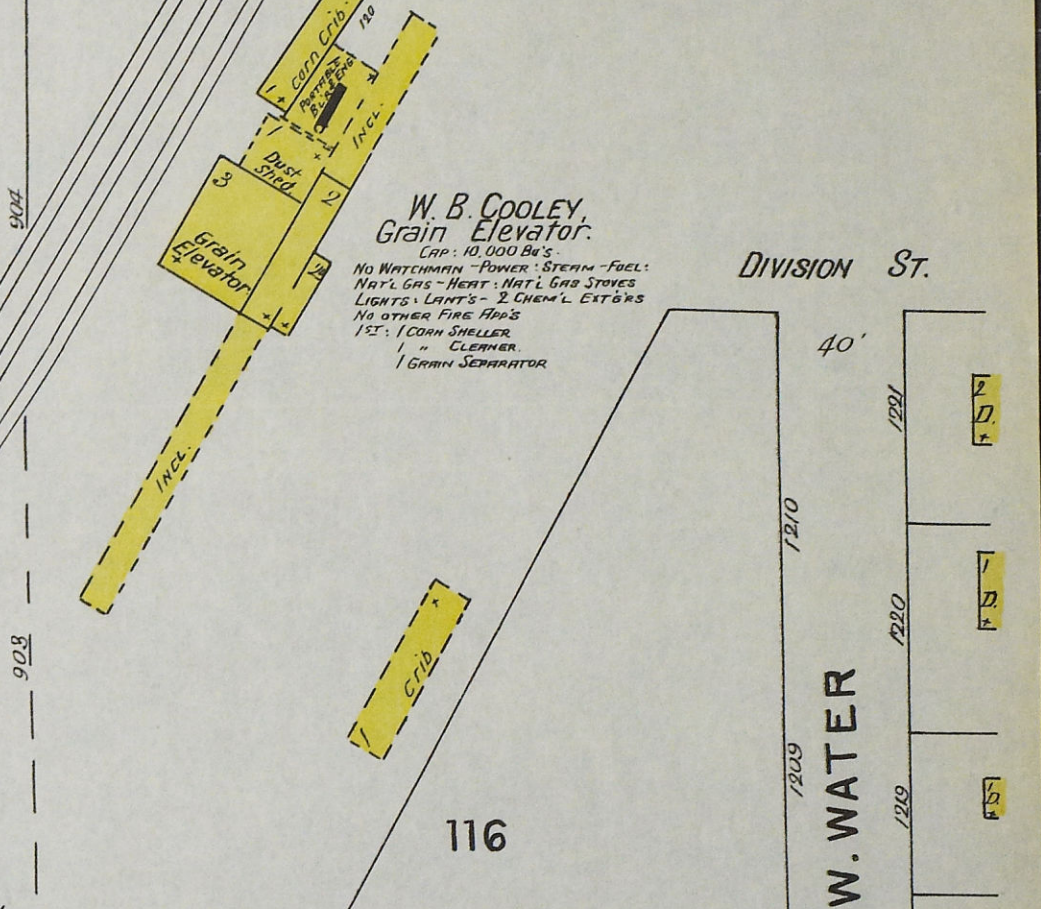
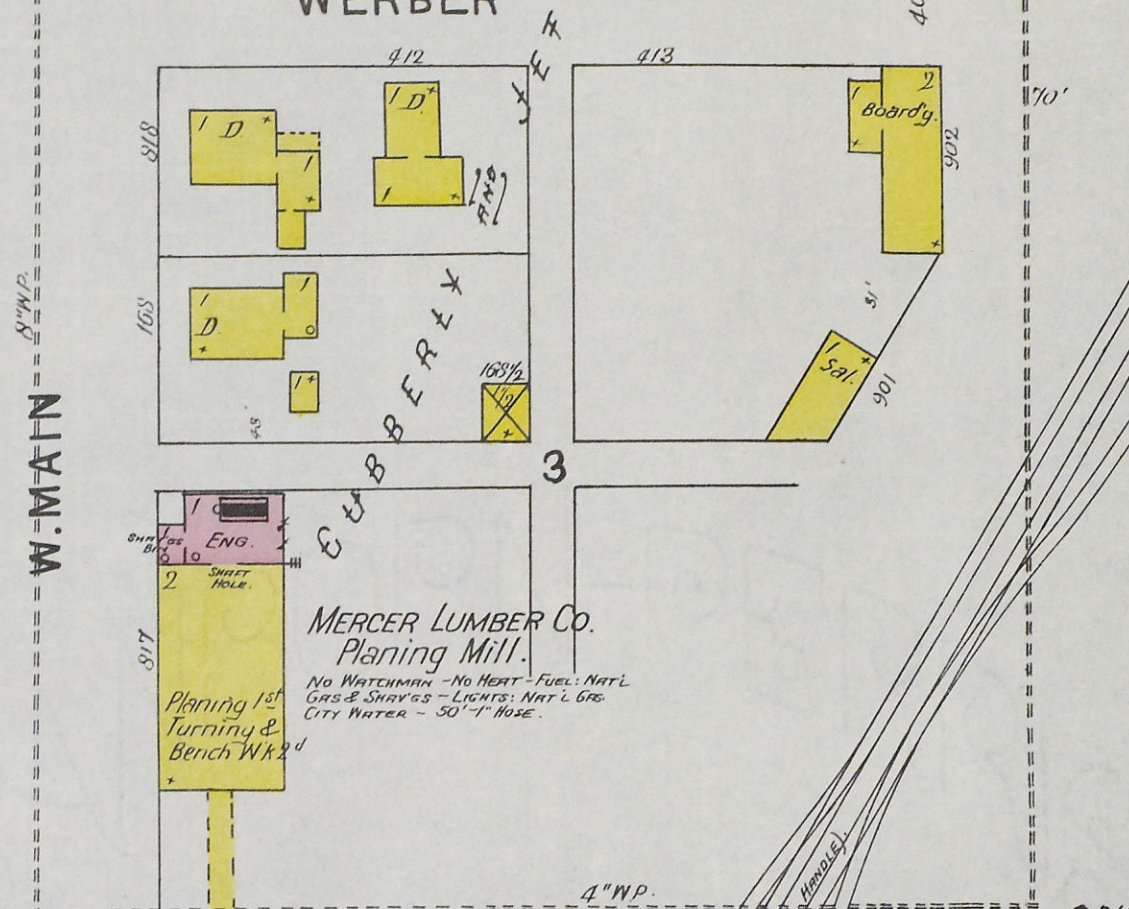
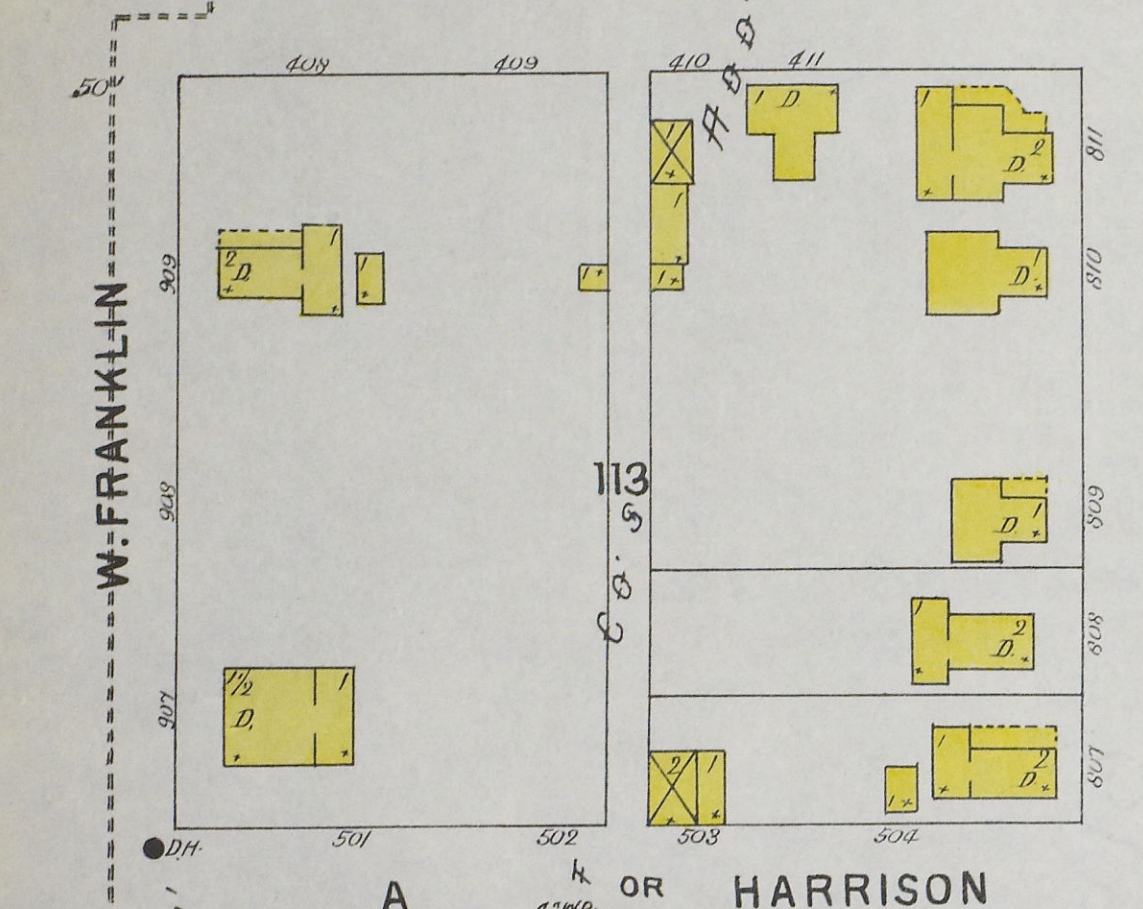
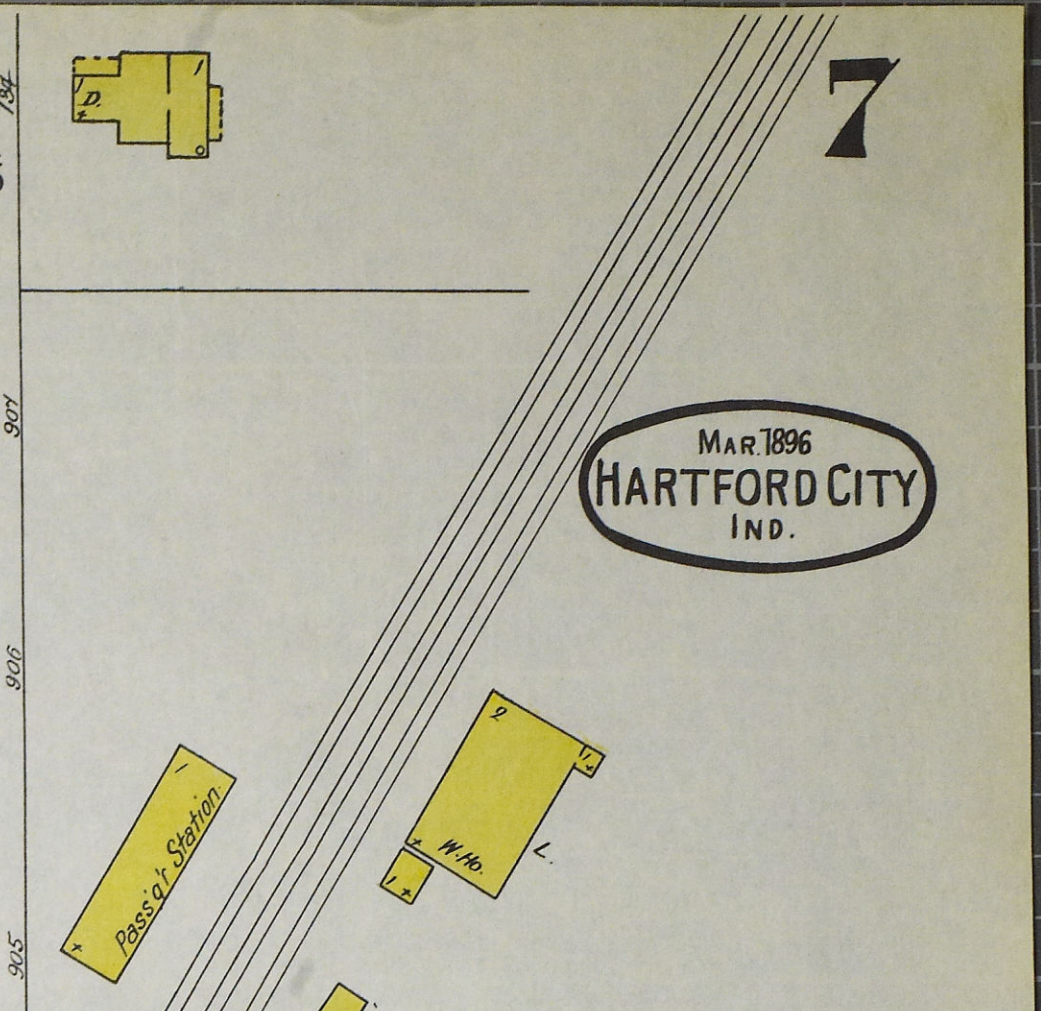
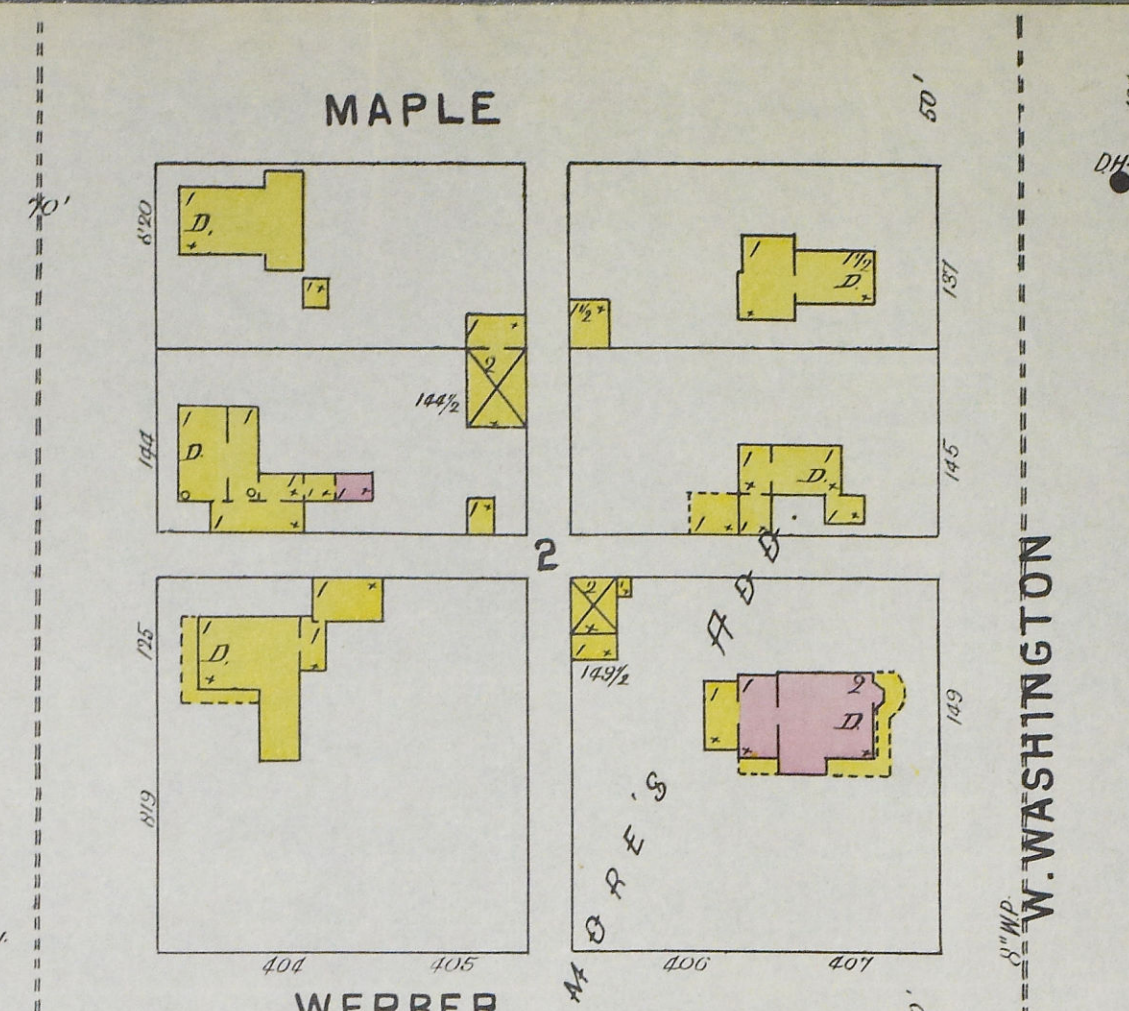
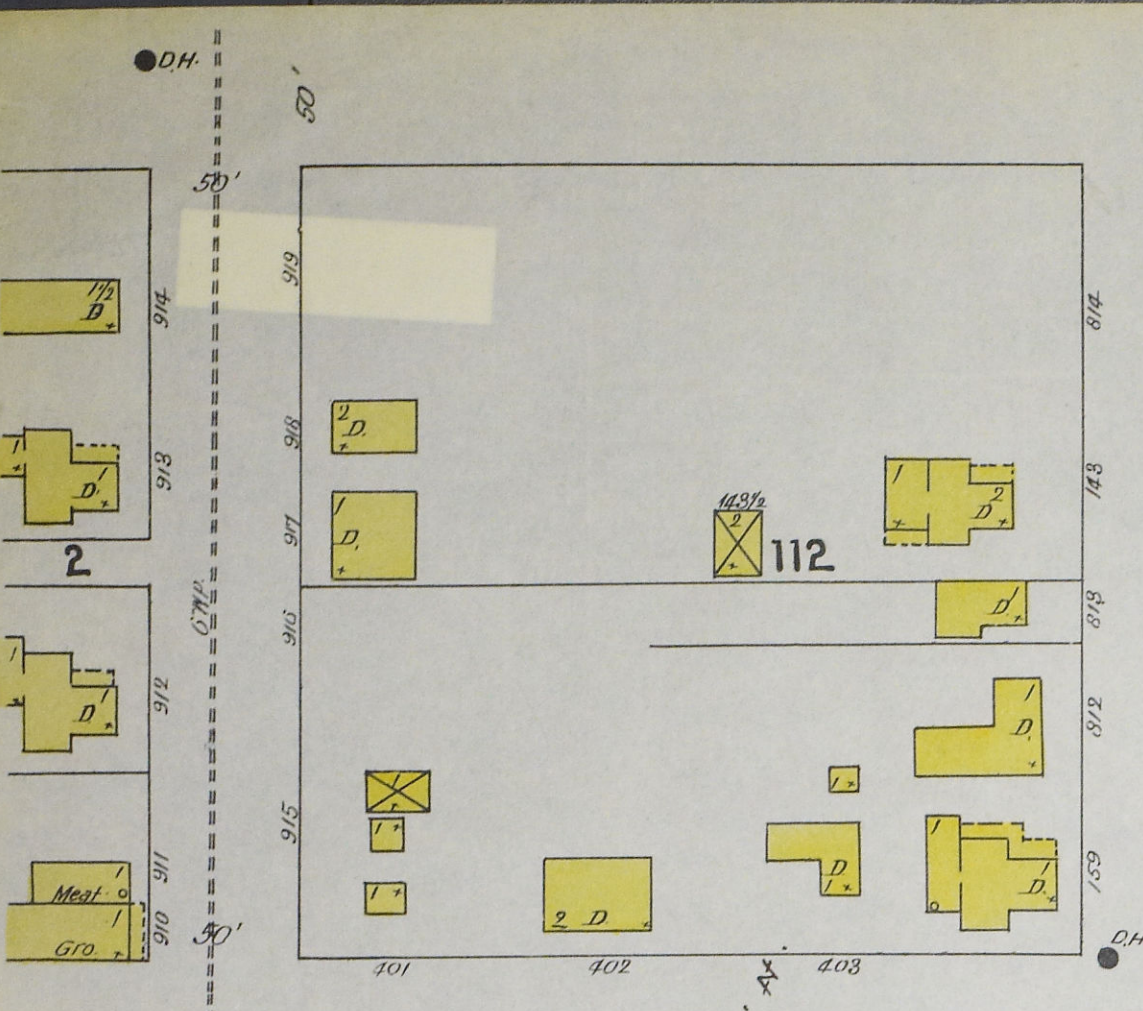
REGULAR NIGHT WATCHMAN. NO CLOCK. HEAT: STEAM IN MILL. NATL GAS STOVE IN OFF. FUEL: NATL GAS. LIGHTS: NATL GAS. SMITH & VAILLE. ST. FIRE PUMP. 8" X 10" X 12" & DEANE STEAM PUMP. 5 1/2" ST. FIRE PUMP. WITH ALL HYDRANTS. ALSO SMALL SMITH & VAILLE PUMP. CONT'D. WITH INSIDE HYDTS. ONLY. 300' 2" HOSE SMALL WMT. 4 1/2" HOSE. INSIDE & OUTSIDE HYDTS WITH HOSE AS SHOWN.

Scale of Feet.

50 100 150

MAR 1896
HARTFORD CITY
IND.

7



TRIPPLICATE

S. MONROE

118

S. JEFFERSON

121

120

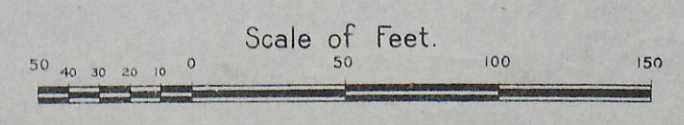
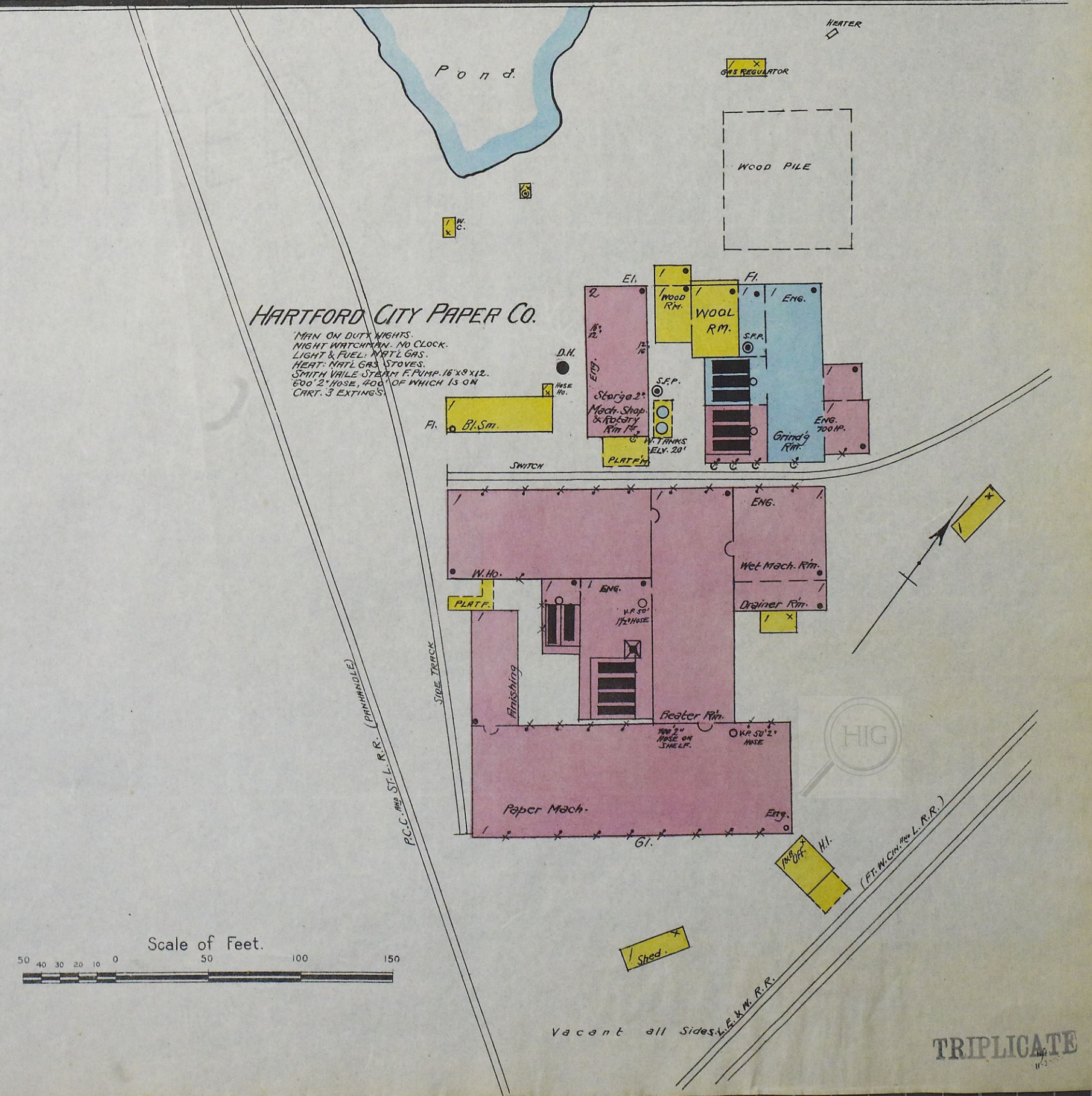
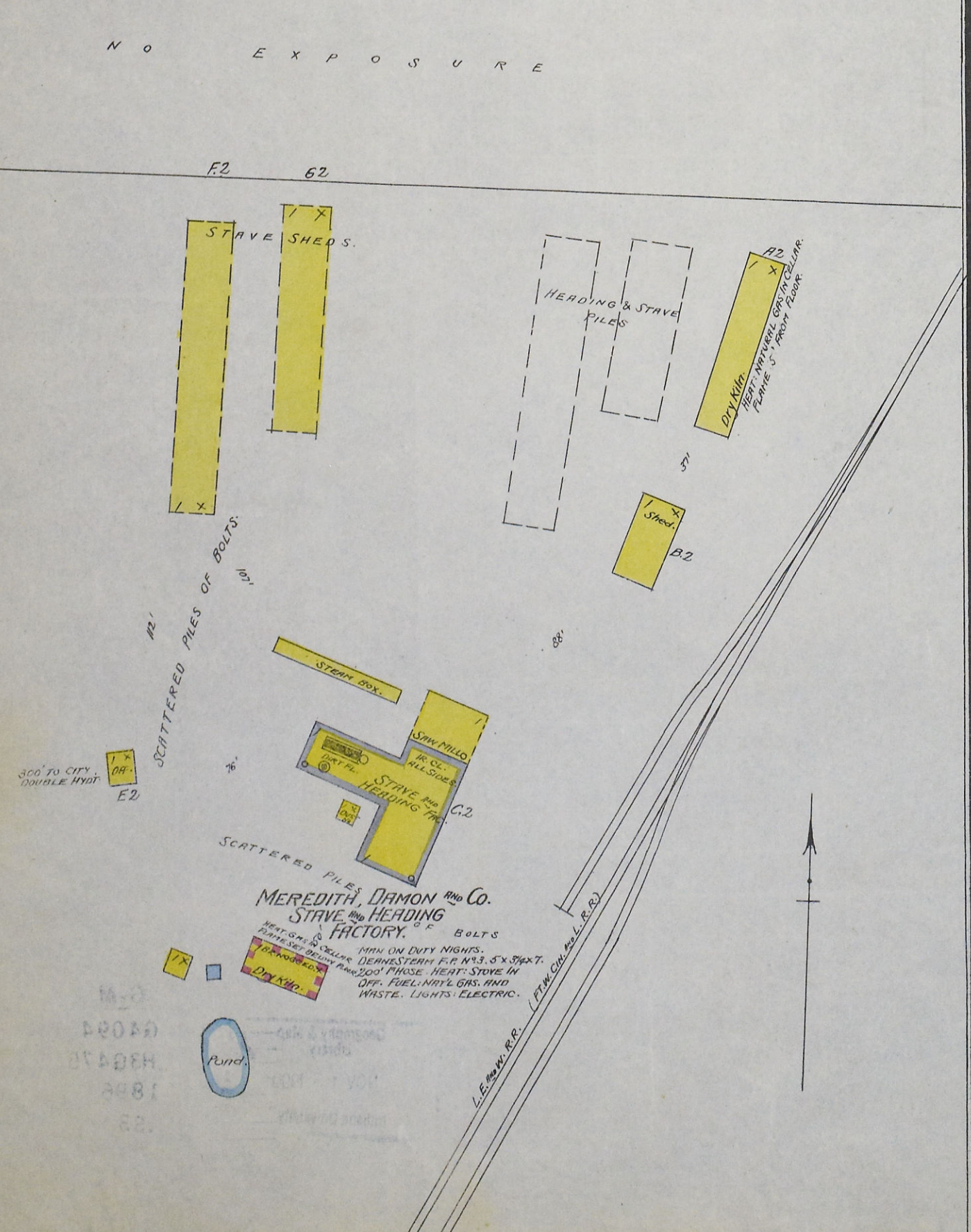
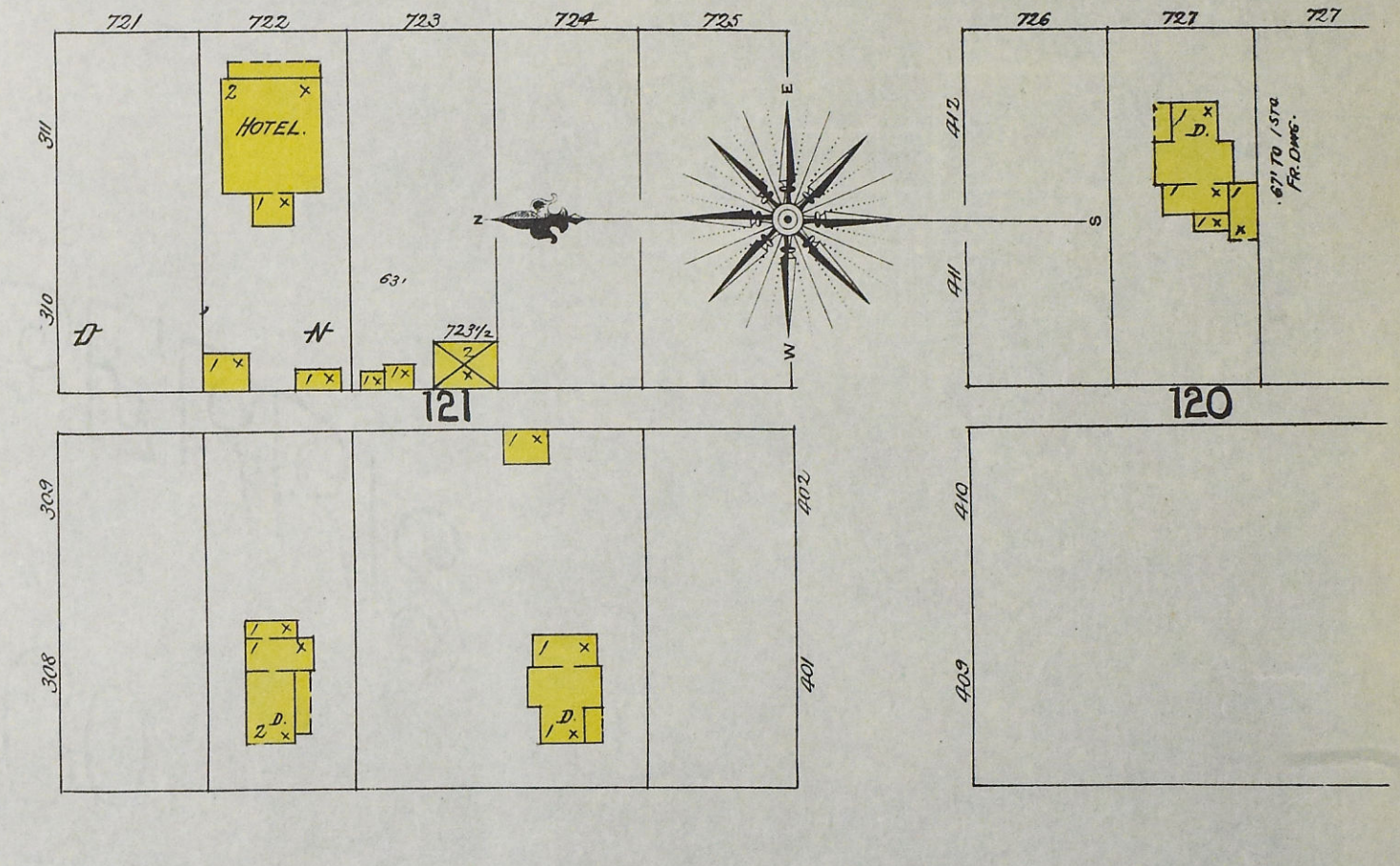
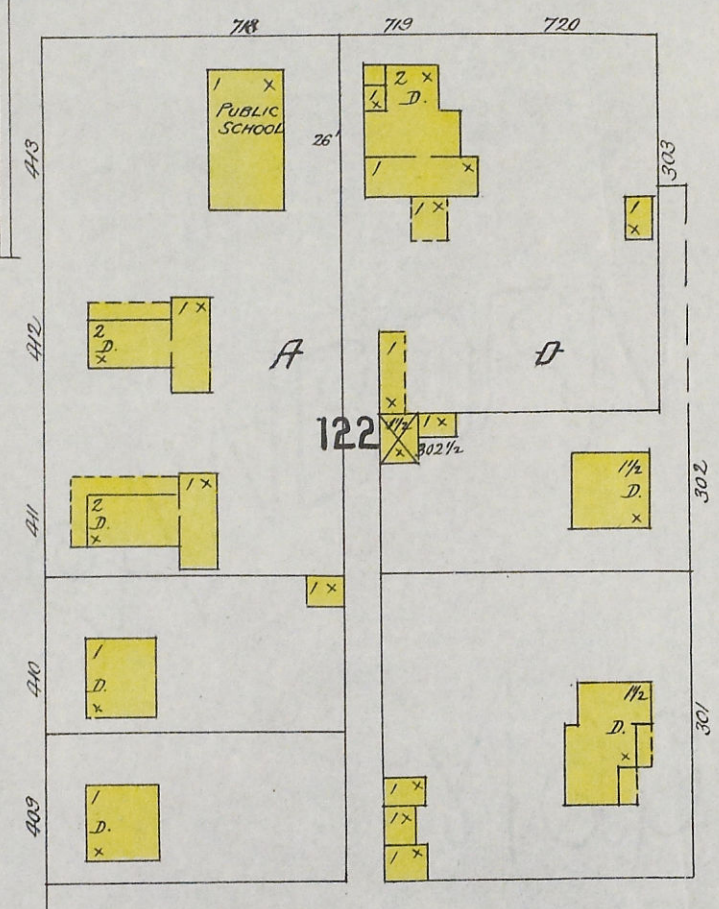
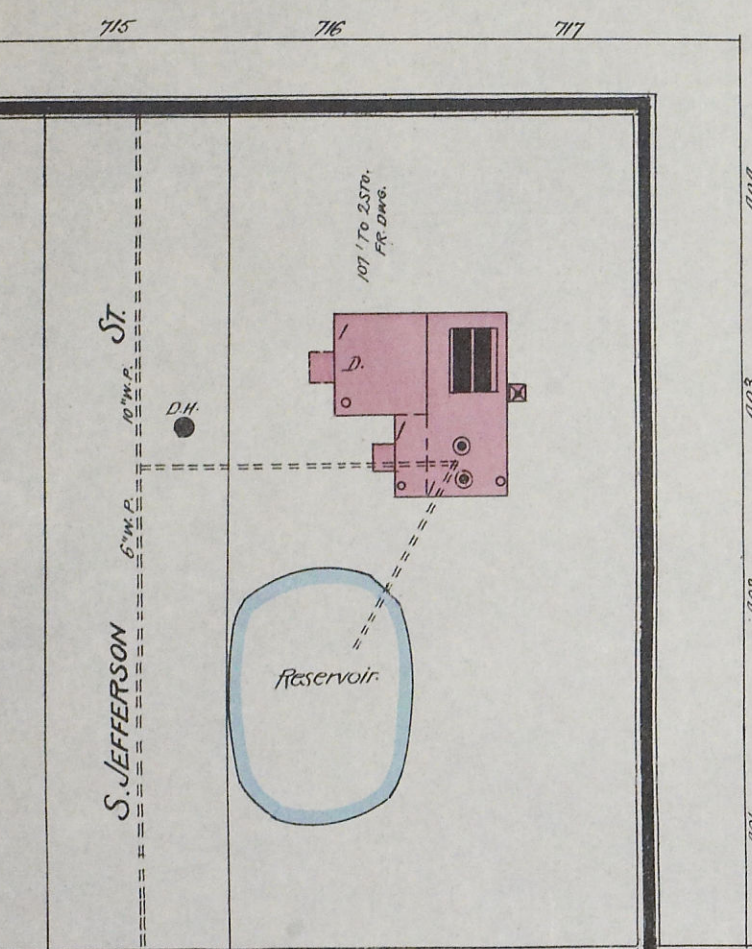
FOURTH

FIFTH

SIXTH

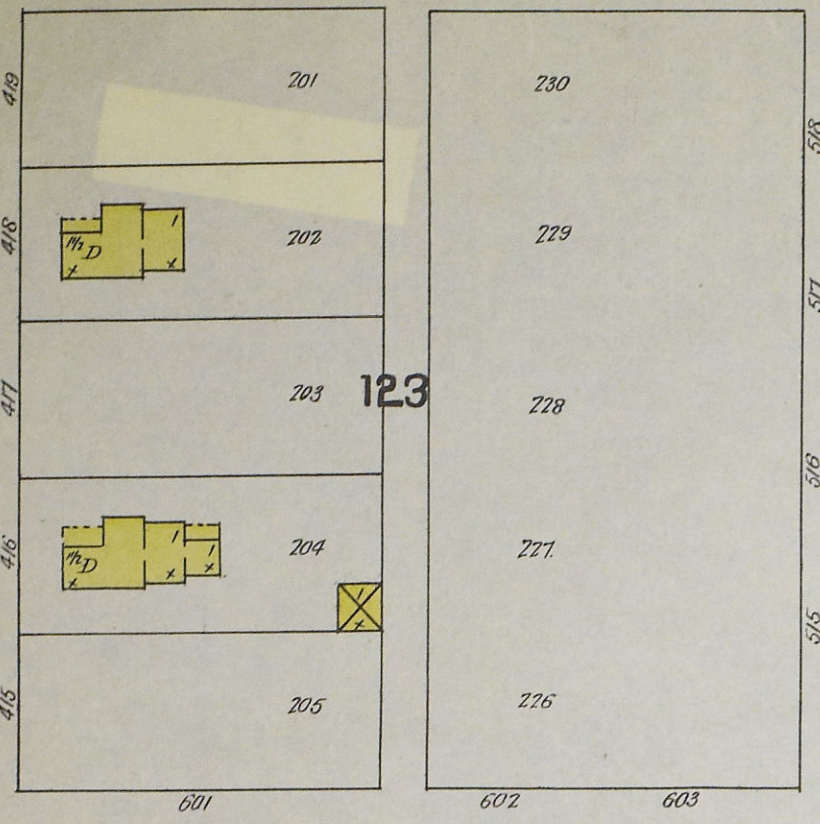
SEVENTH

N O E X P O S U R E

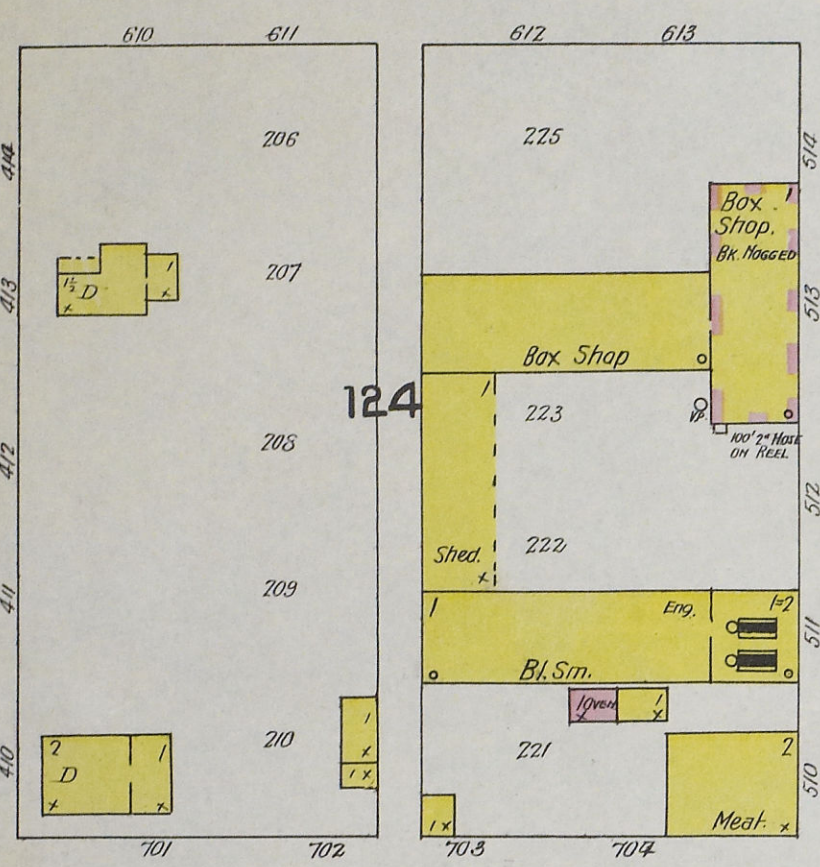


TRIPPLICATE

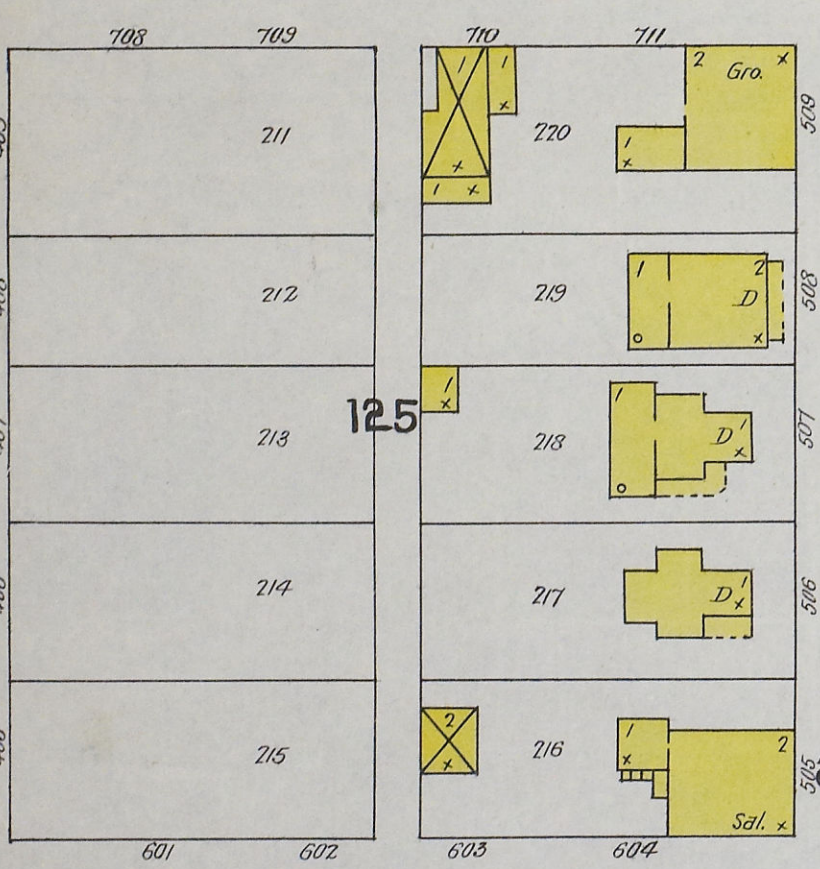
S. SPRING



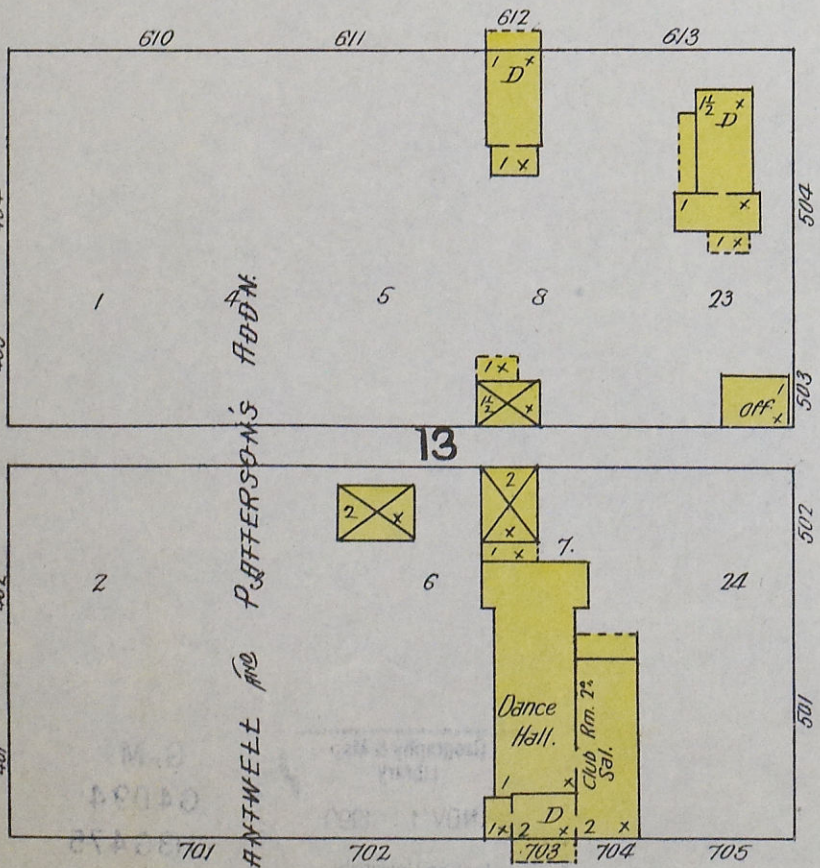
S. POPLAR



S. OAK

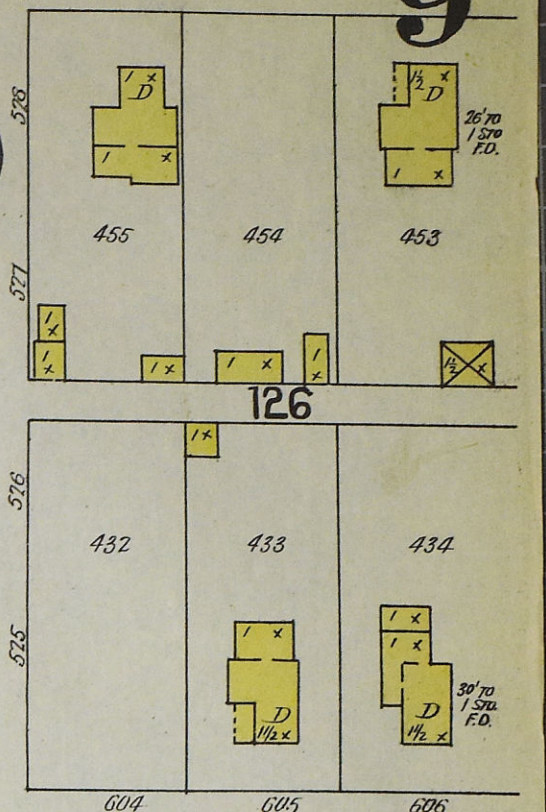


S. MULBERRY

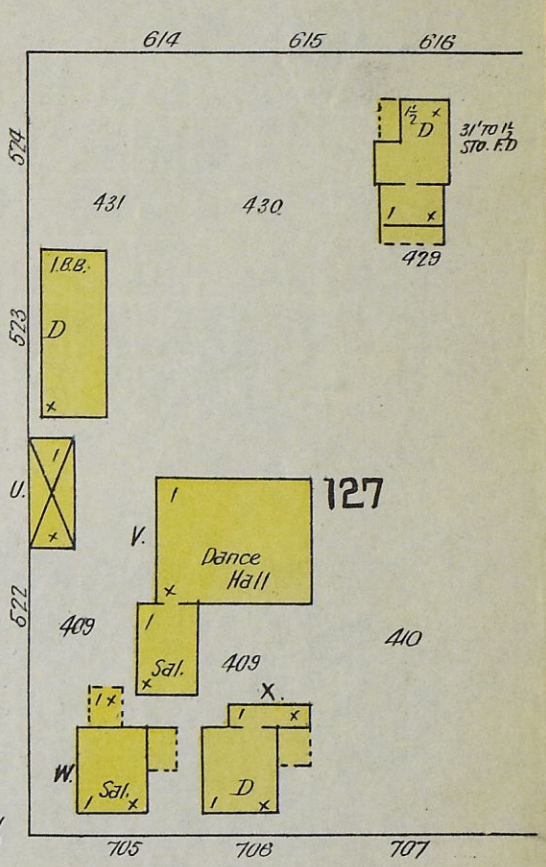


CANTWELL & PATTERSON'S FDDOM

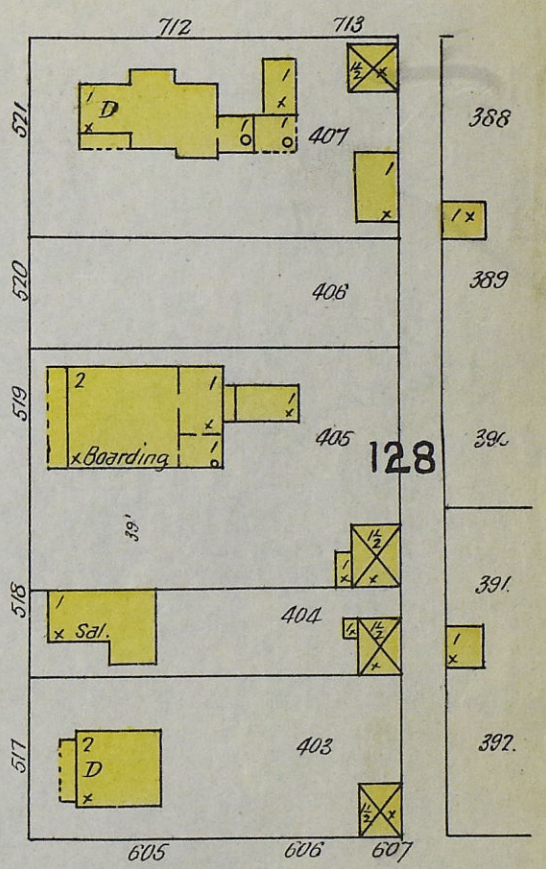
S. SPRING



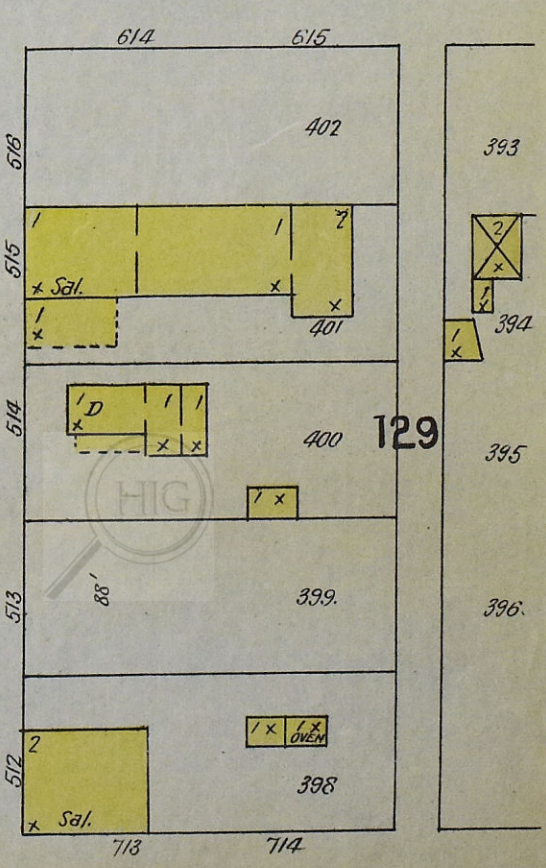
S. POPLAR



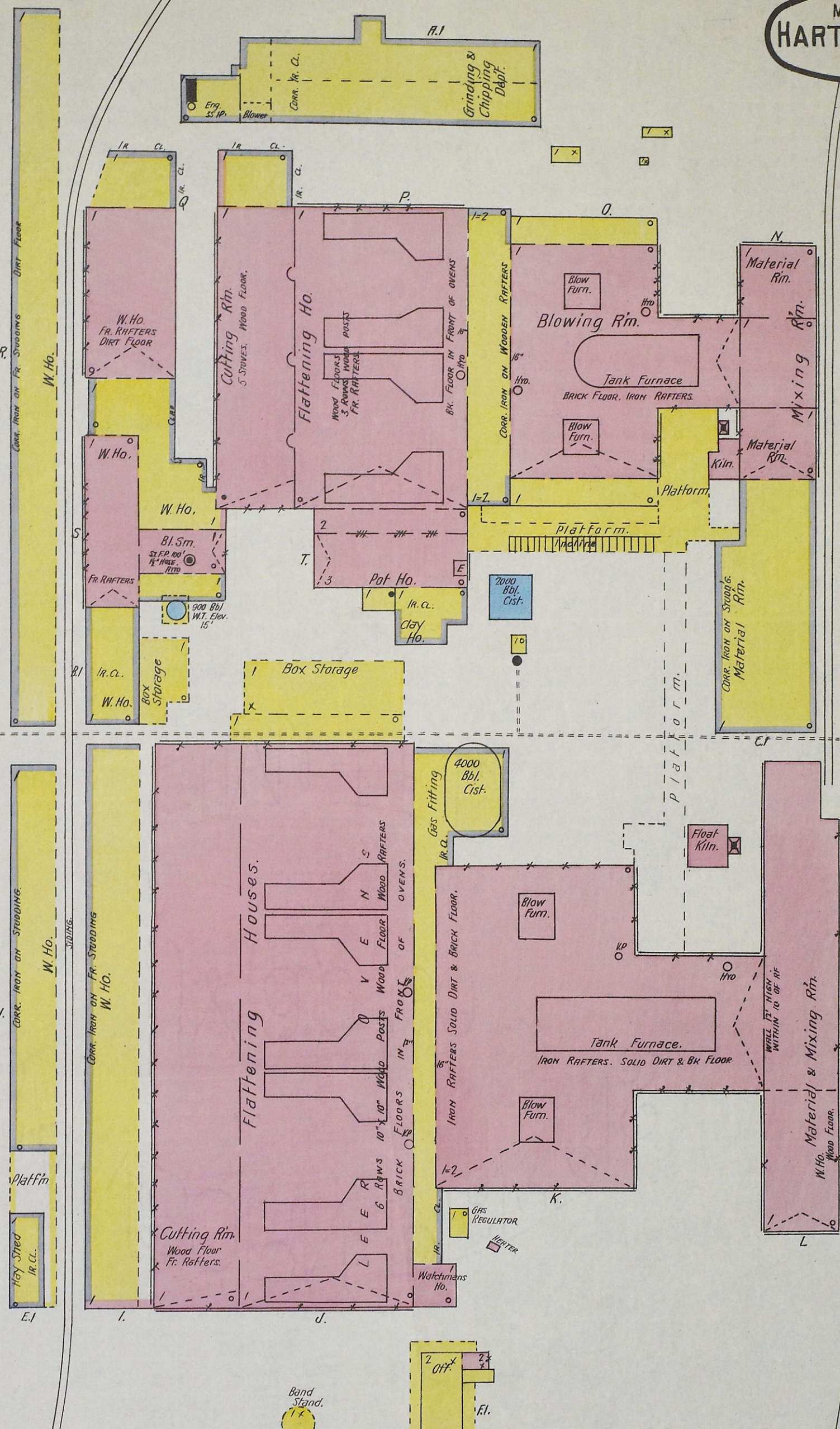
S. OAK



S. MULBERRY

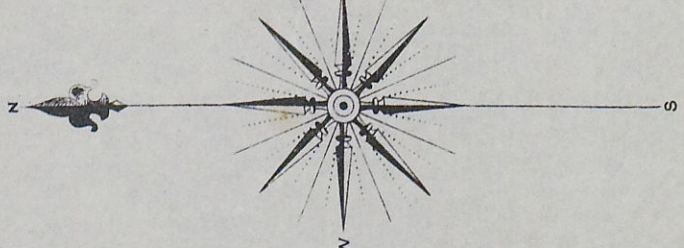


MAR 1896
HARTFORD CITY
IND.



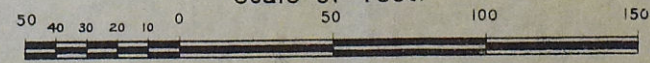
HARTFORD CITY GLASS CO.
Window Glass Works.
1/4 Miles S. of Court Ho.

3 NIGHT WATCHMEN. PNEUMATIC CLOCK. RUN DRY & NIGHT. GUESS & LIGHTS: HAVE ONE. HEAT: HALL ONE STOVES. WHERE NOT HEATED BY MELTING FURNACES. LARGE DENNE BROS (INDIANAPOLIS) STEEP WATER FROM WELLS. 300 WINDS. CITY WATER. 1200' 2" HOSE. 600' OF IT ON REEL IN HOSE HO. 24 3 SMALL CHEMICAL EXTINGUISHERS. 50 FIRE BUCKETS.



S. MONROE

Scale of Feet.



8
6TH ST.

TRIPLICATE