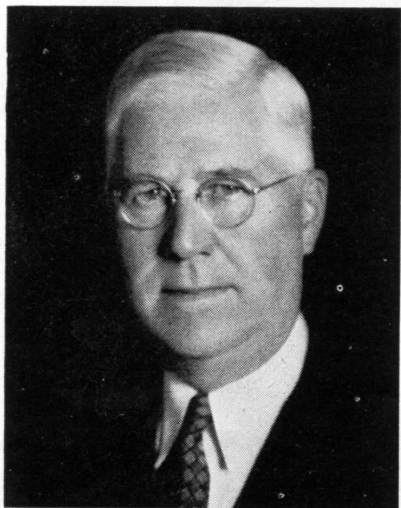


New Assignments Given Traffic Men



Carl Howe

New assignments for Erie Railroad traffic men were announced recently by Robert E. Woodruff, president.

Carl Howe, vice president in charge of traffic, has been appointed resident vice president in charge of all departments at Chicago. He is succeeded in Cleveland by Harry W. Von Willer, who is promoted from assistant vice president to the traffic vice presidency.

Mr. Von Willer is succeeded by D. R. Thompson, formerly freight traffic manager at Chicago.

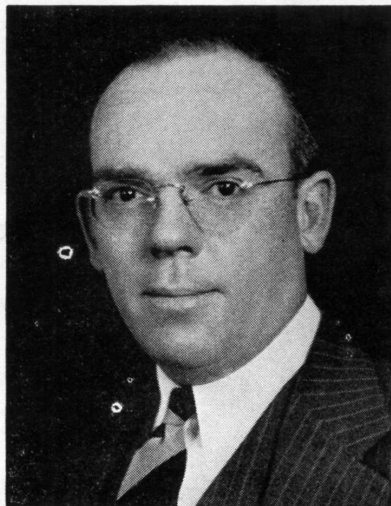
Mr. Howe began his railroad career 53 years ago as a clerk in the Niles (Mich.) office of the Michigan Central. In 1893 he was appointed freight agent at Chicago Heights, Ill. Subsequently, he was assistant chief clerk and chief clerk to the freight traffic manager in Detroit, assistant general freight agent in Buffalo, traffic manager of the Merchants' Dispatch in New York and manager of fast freight lines of the New York Central in Buffalo. He became traffic manager of the Michigan Central in Chicago in 1917. Appointed vice president of the Erie in Chicago in 1927 he came to Cleveland as traffic vice president in 1939.

Mr. Von Willer came to the Erie from the Big Four in 1923 as chief clerk at Indianapolis.

In 19 years with the Erie he has been successively commercial agent at Indianapolis, general agent at Springfield, O., and Minneapolis, Minn., division freight agent at Youngstown, assistant general freight agent at Pittsburgh and as-

sistant freight traffic manager at Cleveland.

In 1939 he was promoted to freight traffic manager at Chicago, and on Jan. 1, 1941, returned to Cleveland as assistant traffic vice president.



H. W. Von Willer

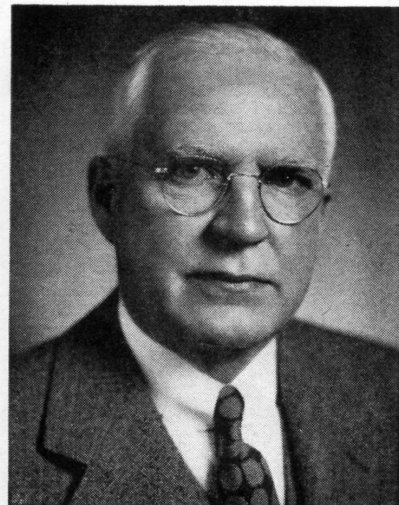
Mr. Thompson started in Erie service as a clerk in the accounting department, New York, in 1914. Later he served as clerk in the president's office, chief clerk in foreign freight traffic and assistant general freight agent in various



D. R. Thompson

cities, coming from Chicago to Cleveland.

Other assignments are indicated under the accompanying photographs.



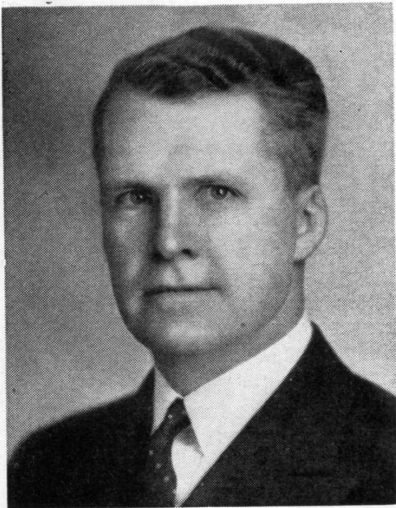
J. G. Hill, assistant freight traffic manager, Chicago, becomes freight traffic manager, Chicago



B. F. Conway, general agent, Philadelphia, becomes general New England agent, Boston



L. J. Marion, general agent, Dallas, becomes general agent, Albany



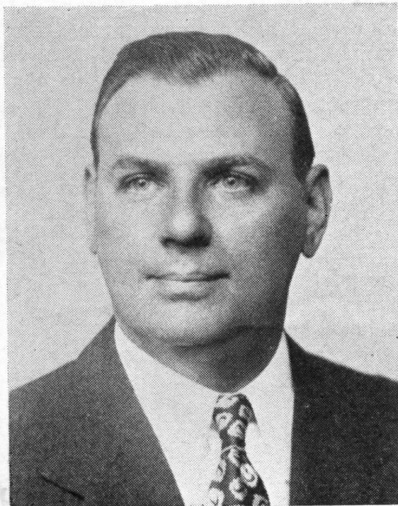
J. A. Russell, manager, perishable and dairy traffic, New York, becomes western traffic manager, Chicago



J. T. McEntee, assistant general freight agent, Buffalo, becomes general eastern freight agent, New York



G. W. Madsen, general New England agent, Boston, becomes assistant general freight agent, Buffalo



P. J. Napoli, assistant manager, perishable and dairy traffic, New York, becomes manager of that department



H. A. Wilson, division freight agent, Jamestown, becomes general agent, Philadelphia



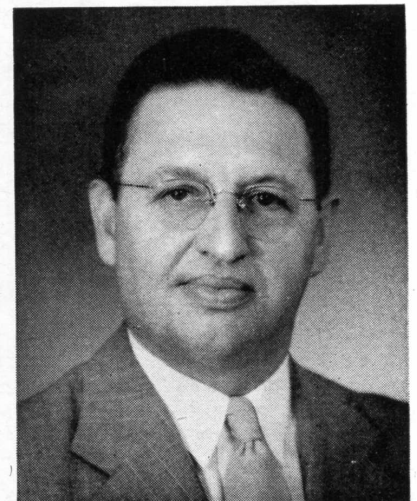
C. R. Martin, general agent, Albany, becomes division freight agent, Jamestown



E. W. Keiley, general agent, Springfield, becomes general agent, Dallas



E. H. Huffman, commercial agent, Cleveland, becomes general agent, Springfield



F. F. Moore, commercial agent, Indianapolis, becomes commercial agent, Cleveland